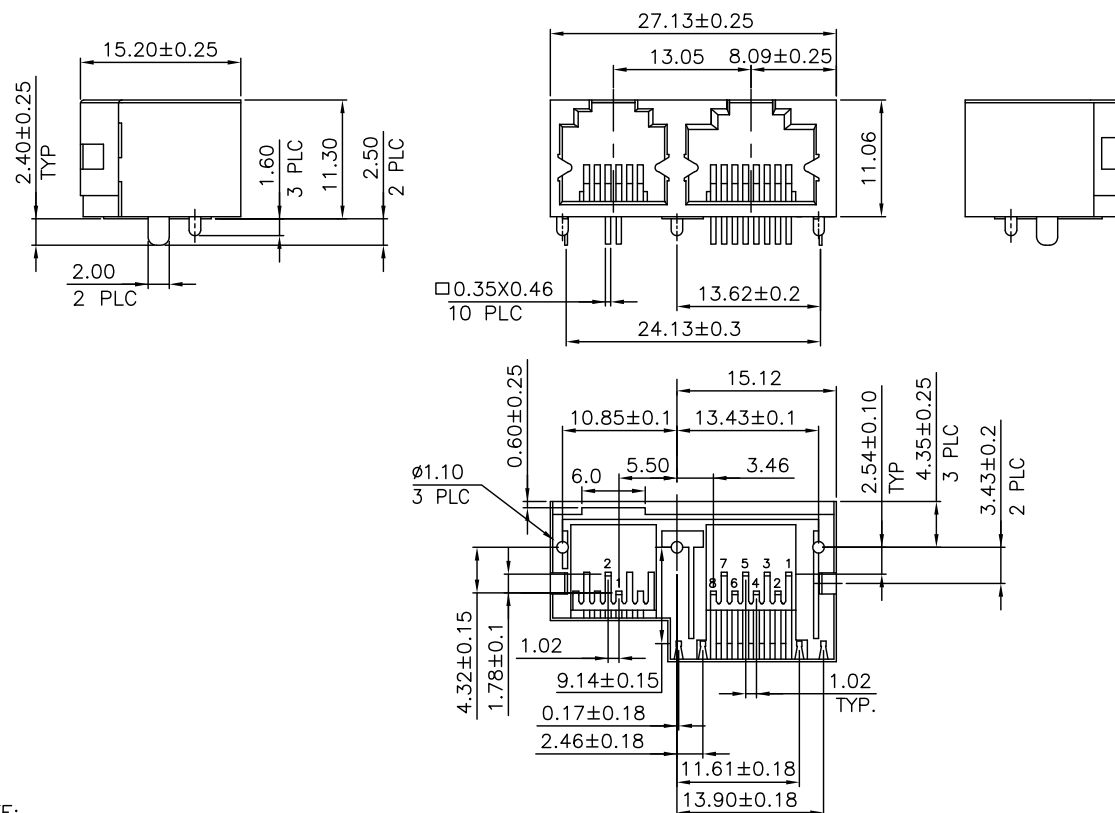


RECOMMENDED PCB LAYOUT (THICKNESS: 1.6MM)
DIMENSION TOLERANCE: 1 PLC: ± 0.1 2PLC: ± 0.05)



NOTE:

1. MATERIAL:
HOUSING: THERMOPLASTIC HIGH TEMP., UL94 V-0, COLOR: BLACK.
CONTACT: PHOSPHOR BRONZE, H, THICKNESS: 0.35mm.
SHELL: BRASS, THICKNESS: 0.25mm.
2. FINISH:
CONTACT: GOLD PLATED (SEE TABLE) IN CONTACT AREA,
GOLD FLASH ON SOLDER TAILS,
50u" MIN. NICKEL UNDERPLATED ALL OVER.
SHELL: 20u" MIN. NICKEL PLATED.
3. WAVE SOLDER CAPABLE TO 265°C PER 109-202,
CONDITION B.

OBSOLETE	W/O	W/O	50μ"	1-1734712-4
			30μ"	1-1734712-3
			15μ"	1-1734712-2
			6μ"	1-1734712-1
	W/O	0.6mm	50μ"	1-1734712-4
			30μ"	1-1734712-3
			15μ"	1-1734712-2
			6μ"	1-1734712-1
	LED	POLARIZATION RIB THICKNESS	MIN. GOLD THICKNESS	PART NUMBER

THIS DRAWING IS A CONTROLLED DOCUMENT.

DWN	O. HU	21MAR200
CHK	S. HOU	21MAR200
APVD	WJ. KE	21MAR200
PRODUCT SPEC		
108-57535		
APPLICATION SPEC		
—		
WEIGHT	4.5 GRAMS	
CUSTOMER DRAWING		

STE

TE Connectivity

MODULAR JACK, RJ45/RJ11,
COMBO, DIP, SIDE ENTRY.

SIZE	CAGE CODE	DRAWING NO
------	-----------	------------

	RESTRICTED TO
--	---------------

A.3 00779 ©=1734712

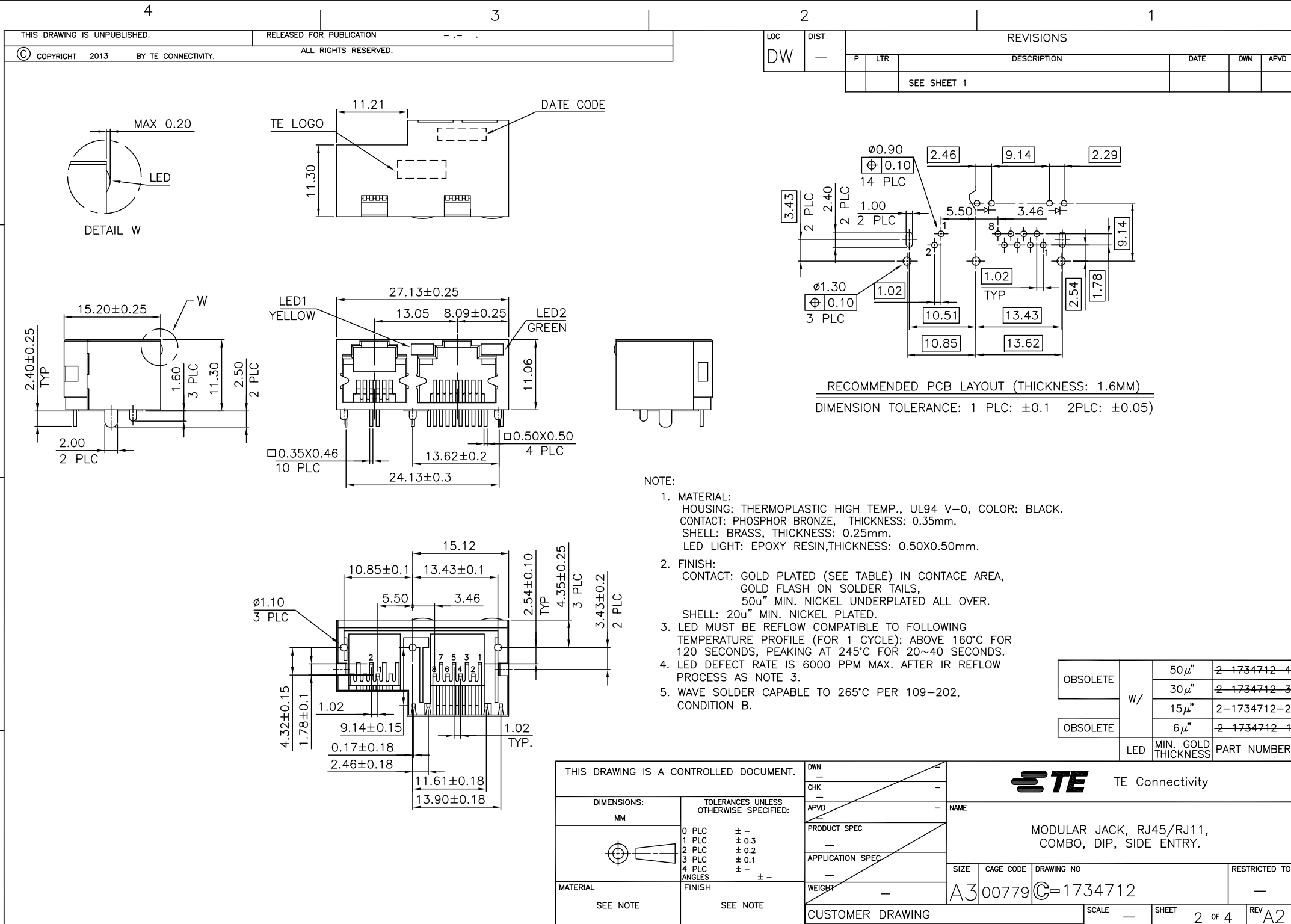
--	--

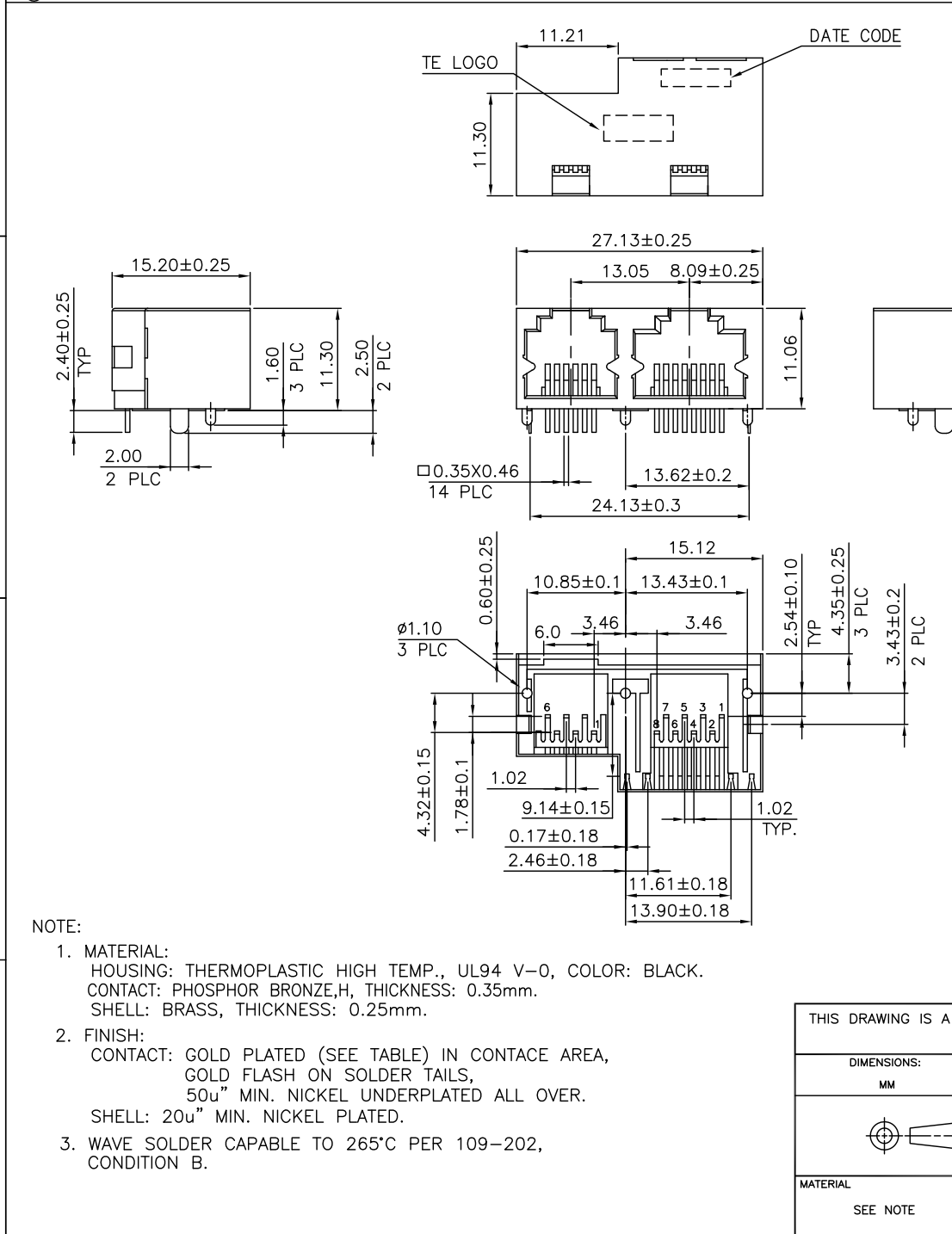
CUSTOMER DRAWING

SCALE	—
-------	---

SHEET	1 OF 4	REV	A2
-------	--------	-----	----

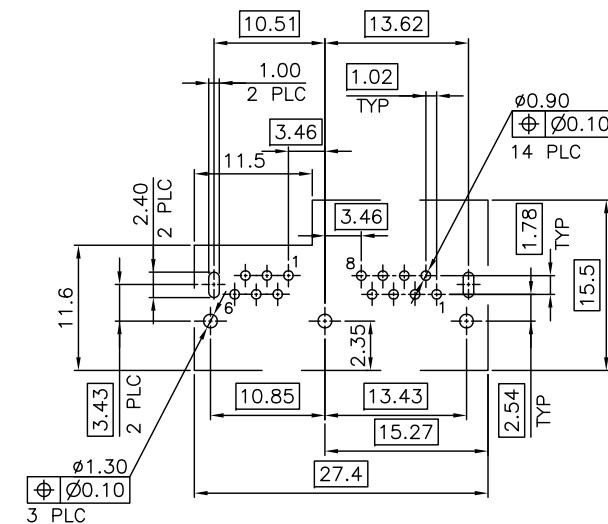
1471-19 (3/11)





NOTE:

1. MATERIAL:
HOUSING: THERMOPLASTIC HIGH TEMP., UL94 V-0, COLOR: BLACK.
CONTACT: PHOSPHOR BRONZE, H, THICKNESS: 0.35mm.
SHELL: BRASS, THICKNESS: 0.25mm.
2. FINISH:
CONTACT: GOLD PLATED (SEE TABLE) IN CONTACT AREA,
GOLD FLASH ON SOLDER TAILS,
50u" MIN. NICKEL UNDERPLATED ALL OVER.
SHELL: 20u" MIN. NICKEL PLATED.
3. WAVE SOLDER CAPABLE TO 265°C PER 109-202,
CONDITION B.



RECOMMENDED PCB LAYOUT (THICKNESS: 1.6MM)
DIMENSION TOLERANCE: 1 PLC: ±0.1 2PLC: ±0.05)

OBSOLETE	W/O	6P6C	50μ"	3-1734712-4
			30μ"	3-1734712-3
			15μ"	3-1734712-2
			6μ"	3-1734712-1
	LED	RJ11	MIN. GOLD THICKNESS	PART NUMBER

THIS DRAWING IS A CONTROLLED DOCUMENT.		DWN —	TE Connectivity	
		CHK —		
		APVD —	NAME	
DIMENSIONS: MM		PRODUCT SPEC	MODULAR JACK, RJ45/RJ11, COMBO, DIP, SIDE ENTRY.	
		APPLICATION SPEC		
		WEIGHT —	SIZE A3	CAGE CODE 00779
MATERIAL SEE NOTE		FINISH SEE NOTE	DRAWING NO C=1734712	RESTRICTED TO —
		CUSTOMER DRAWING	SCALE —	SHEET 3 OF 4
				REV A2

THIS DRAWING IS UNPUBLISHED.

RELEASED FOR PUBLICATION

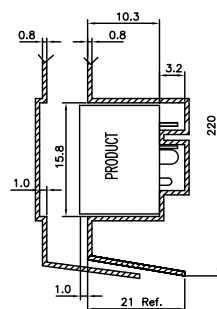
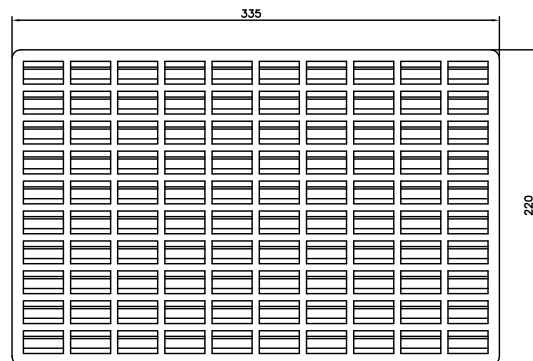
ALL RIGHTS RESERVED.

© COPYRIGHT 2013 BY TE CONNECTIVITY.

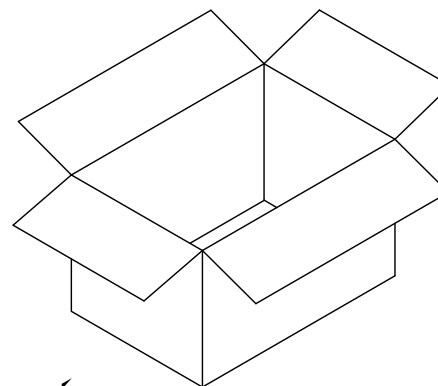
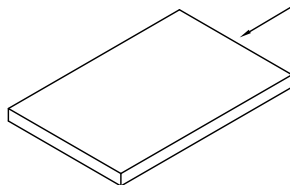
LOC
DWDIST
—

REVISIONS

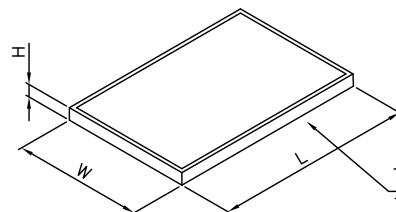
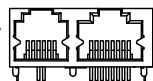
P	LTR	DESCRIPTION	DATE	DWN	APVD
		SEE SHEET 1			



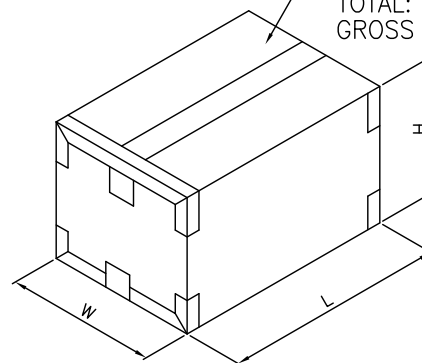
NOTE: 1. MATERIAL: PET T: 0.8mm.

TOP COVER
(ONLY FOR TOP TRAY)

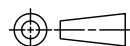
MODULAR JACK

TRAY
335mm(L)X220mm(W)X21mm(H)
100 PCS/TRAY

CARTON

345mm(L)X235mm(W)X195mm(H)
11 TRAY/CARTON
TOTAL: 1100 PCS
GROSS WEIGHT: 7Kg

THIS DRAWING IS A CONTROLLED DOCUMENT.

DIMENSIONS:
MM

MATERIAL

TOLERANCES UNLESS
OTHERWISE SPECIFIED:0 PLC ±
1 PLC ±
2 PLC ±
3 PLC ±
4 PLC ±
ANGLES ±

FINISH

DWN

—

CHK

—

APVD

—

PRODUCT SPEC

—

APPLICATION SPEC

—

WEIGHT

—

CUSTOMER DRAWING

NAME

SIZE

A3

CAGE CODE

00779

DRAWING NO

C=1734712

RESTRICTED TO

—



TE Connectivity

MODULAR JACK, RJ45/RJ11,
COMBO, DIP, SIDE ENTRY.

SCALE

—

SHEET

4 of 4

REV

A2