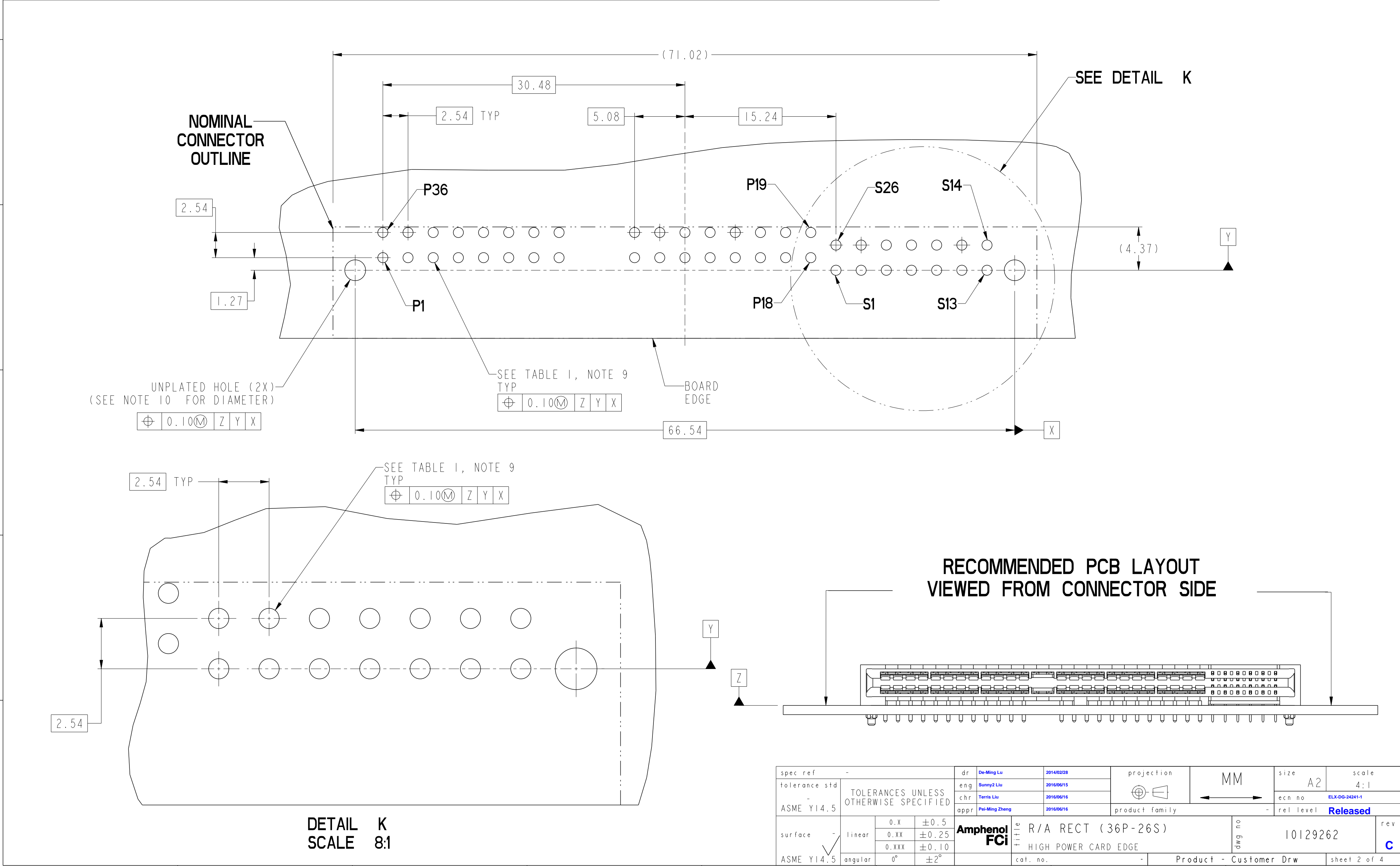
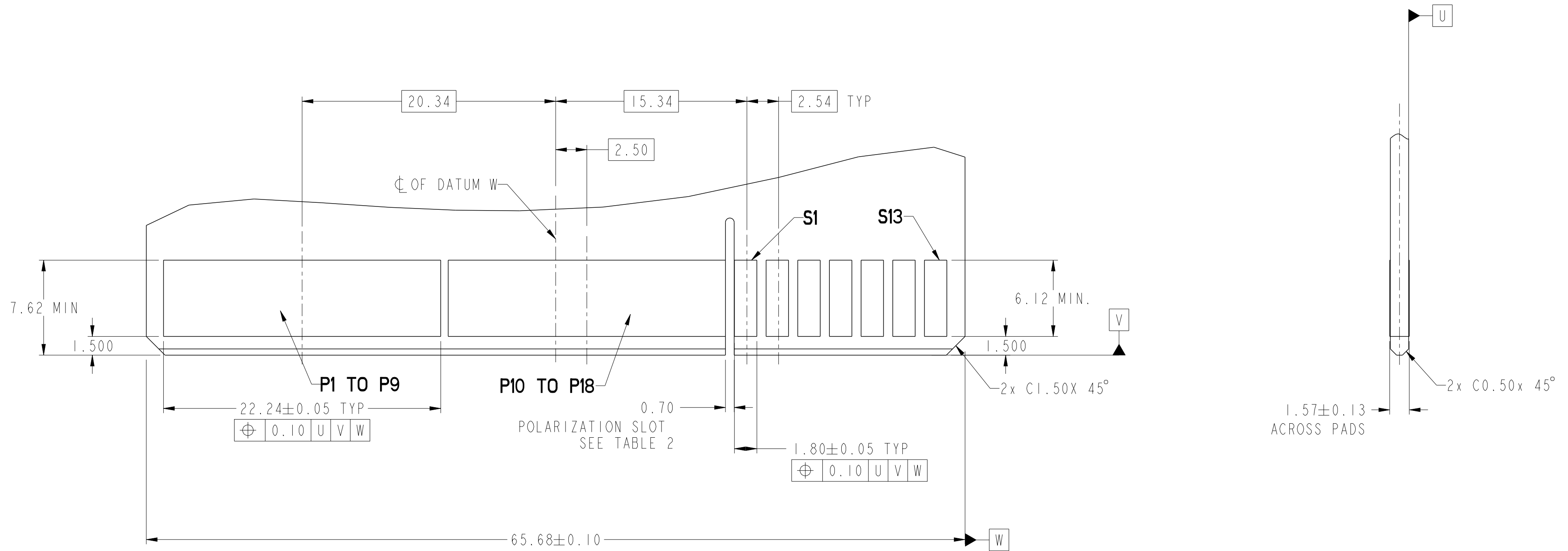
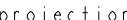

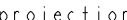

Printed: Jun 16, 2016

CONTACT TYPE	TOP LAYER DESCRIPTION	TABLE 1 (HPCE / SOLDER TAILS) PLATED THROUGH-HOLE REQUIREMENTS				
		DRILLED HOLE DIAMETER	COPPER THICKNESS	TIN-LEAD THICKNESS	TIN THICKNESS	FINISHED HOLE DIAMETER
POWER & SIGNAL	TIN-LEAD	1.10-1.16 (1.15 DRILL)	0.025 - 0.050	0.005 - 0.015	--	0.94 - 1.10
	IMMERSION TIN	1.10-1.16 (1.15 DRILL)	0.025 - 0.050	--	0.9 - 1.5um	0.94 - 1.10
	COPPER (SEE NOTE 8)	1.10-1.16 (1.15 DRILL)	0.025 - 0.050	--	--	0.94 - 1.10

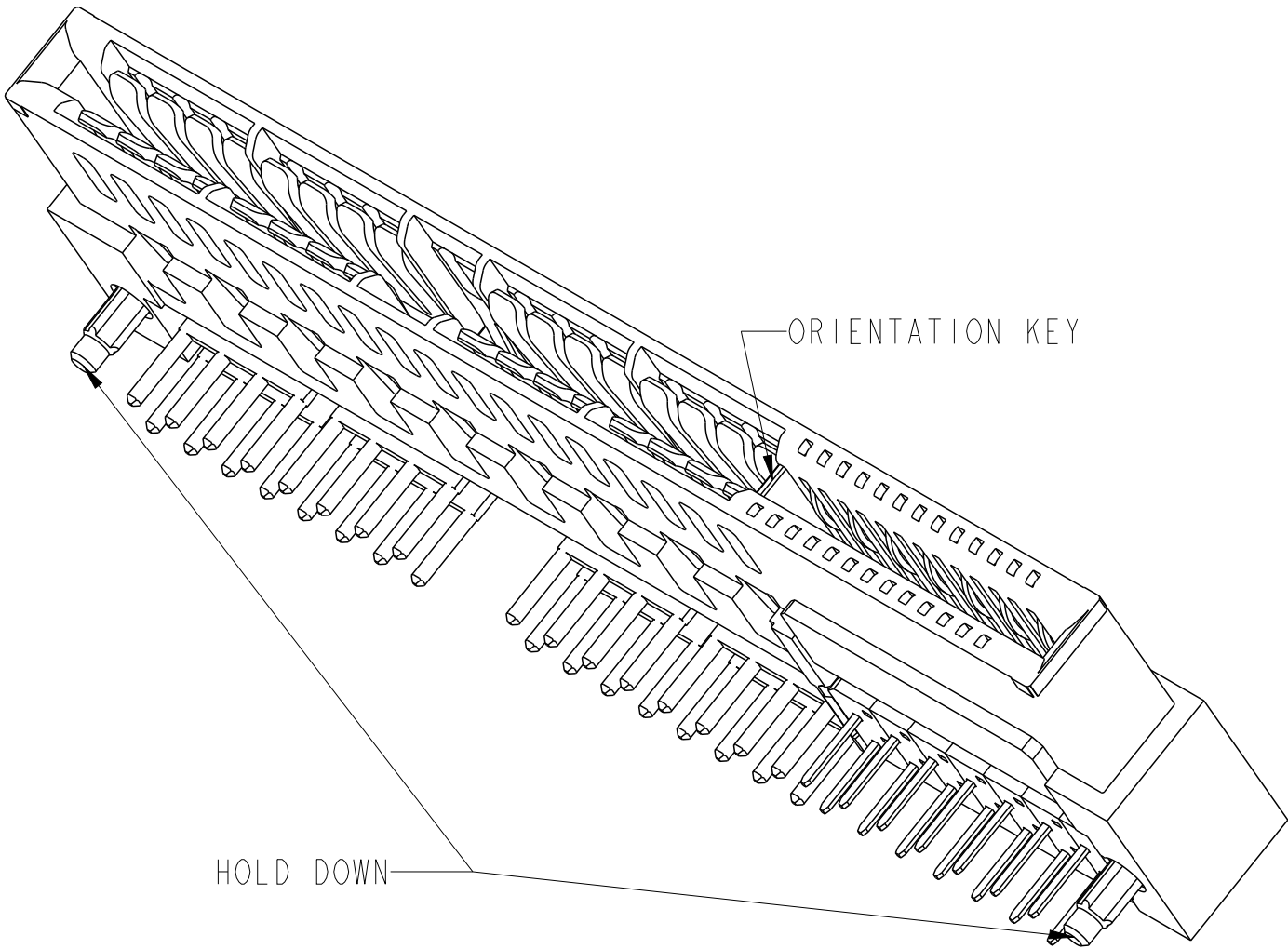





REFERENCE
PANDEMONIUM POWER SUPPLY BOARD

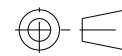
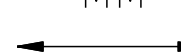
spec ref		-		dr		De-Ming Lu		2014/02/28		projection						MM		size		A2		scale		4:1	
tolerance std		-		eng		Sunny2 Liu		2016/06/15						MM		ecn no		ELX-DG-24241-1		rel level		Released			
ASME Y14.5		TOLERANCES UNLESS OTHERWISE SPECIFIED		chr		Terris Liu		2016/06/16								product family		-							
				appr		Pei-Ming Zheng		2016/06/16																	
surface		linear		0.X		±0.5		Amphenol FCi		title		R/A RECT (36P-26S)		dwg no		10129262		rev		C					
		0.XX		±0.25		HIGH POWER CARD EDGE																			
		0.XXX		±0.10																					
ASME Y14.5		angular		0°		±2°		cat. no.		-		Product - Customer Drw		sheet 3 of 4											

HPCE PART NUMBER (TABLE 2)					
PART NUMBER	TAIL TYPE	HOLD-DOWN OPTION	ORIENTATION KEY	DIM T TAIL LENGTH ±0.25	DIM B MATING LENGTH
10129262-001LF	SOLEDER TAIL	YES	NO	4.85	3.88
10129262-002LF			YES		
10129262-003LF			NO	3.25	3.88
10129262-004LF			YES		



NOTES:

1. CONNECTOR MATERIALS:
- HOUSING: HIGH TEMPERATURE THERMAL PLASTIC, BLACK
UL 94V-0 COMPLIANT
- CONTACTS: HIGH PERFORMANCE COPPER ALLOY.
2. CONTACT FINISH REF. GS-12-604 SECTION 5.2.
3. PRODUCT SPECIFICATION: GS-12-604.
4. APPLICATION SPECIFICATION: GS-20-128.
5. PRODUCT MARKING ON HOUSING IN AREA SHOWN MEETS AFCI SPECIFICATION: GS-24-007.
6. PACKAGING MEETS FCI SPECIFICATION GS-14-937.
7. HOUSING COMPONENT WILL WITHSTAND EXPOSURE TO 260°C PEAK TEMPERATURE FOR 60 SECONDS IN A CONVECTION, INFRA-RED, OR VAPOR PHASE REFLOW OVEN.
8. COPPER PLATING THICKNESS IN CENTER OF VIA-HOLE CAN BE NO MORE THAN 0.003 LESS THAN OTHER AREAS.
9. ALL HOLE SIZES ARE FINISHED HOLE SIZES.
10. MOUNTING HOLES ARE UNPLATED
Ø 2.10 +/- 0.1 FOR SOLDER TAILS
11. A SYMBOL  WILL BE NEXT TO ANY DIMENSION, VIEW, OR NOTE WHICH HAS BEEN MODIFIED WITH THE CURRENT DRAWING REVISION.

spec ref -				dr De-Ming Lu		2014/02/28		projection		MM		size A2		scale 4:1			
tolerance std -				eng Sunny2 Liu		2016/06/15						ecn no ELX-DG-24241-1		rel level Released			
ASME Y14.5				TOLERANCES UNLESS OTHERWISE SPECIFIED		chr Terris Liu										2016/06/16	
				appr Pei-Ming Zheng		2016/06/16											
								product family				HPCE					
surface -		linear		0.X ±0.5		Amphenol FCI		title R/A RECT (36P-26S)		dwg no 10129262		rev C					
		0.XX ±0.25															
		0.XXX ±0.10															
ASME Y14.5		angular 0° ±2°				cat. no. -		Product - Customer Drw				sheet 4 of 4					