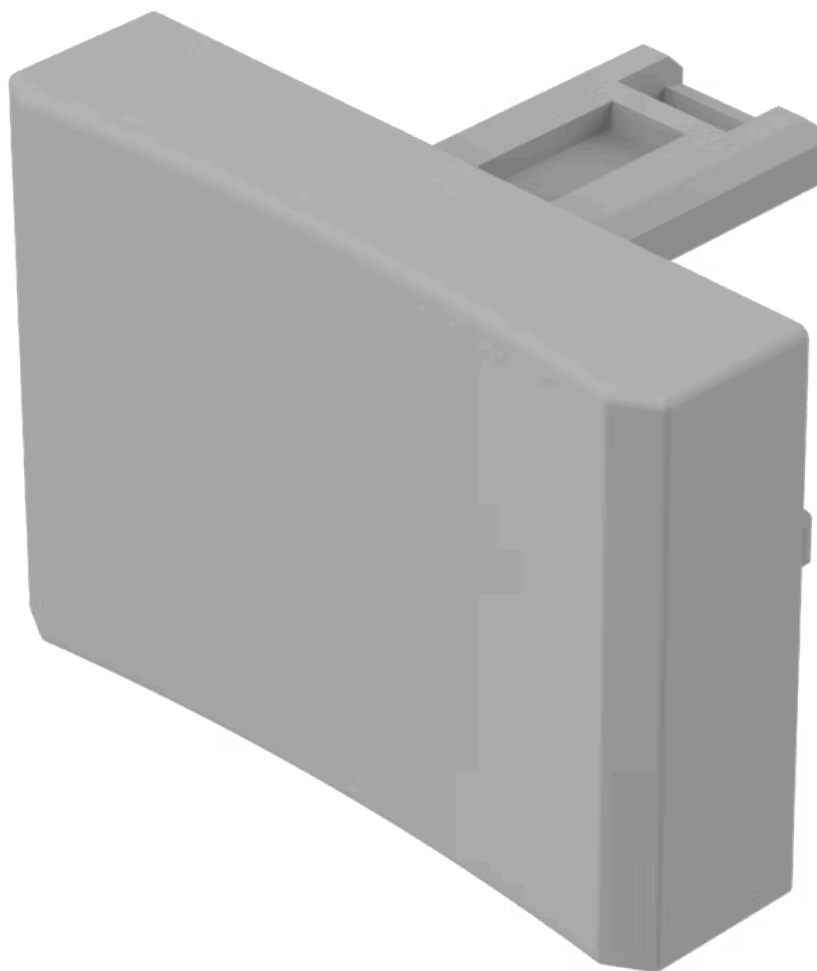


Lens

31-
902.8



<https://eao.com/p/31-902.8>

Your product:



31-902.8 Lens

FRONT

Front form: rectangular

OPERATING-/INDICATION PART

Lens material: Plastic

Lens colour: Grey

Lens shape: concave

Lens optics: opaque

Lens illumination: non illuminative

MECHANICAL CHARACTERISTIC

Weight: 0.001 kg

OTHER

Dimension: 21.5 mm x 15.3 mm

Short Description: Lens, 21.5 mm x 15.3 mm, non illuminative, Grey, concave, Plastic