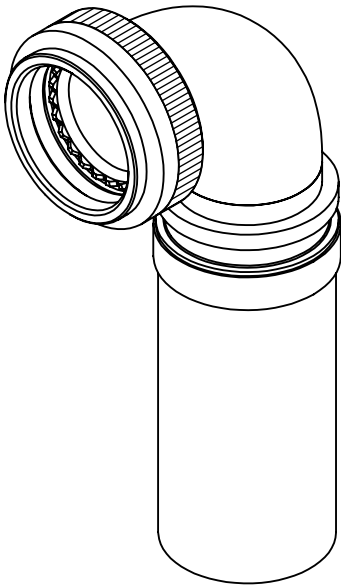


REVISIONS



70H3-15-08-1-C-SE

SERIES
CONNECTOR INTERFACE
ANGLE (3-90°)
SHELL SIZE (TABLE 1)
ENTRY SIZE (TABLE 2)
MATERIAL
FINISH
SWEPT ELBOW STYLE

NOTES:

- 1. THIS PRODUCT IS DESIGNED TO TERMINATE A BRAIDED CABLE SHIELD WITH A HEAT SHRINKABLE LIPPED BOOT TO A CONNECTOR.
- 2. BACKSHELL TO BE PERMANENTLY MARKED/ BAGGED AND LABELLED WITH PART NUMBER AND BATCH NUMBER. (e.g. 70H3-15-08-1-C-SE P123456)
- 3. AVAILABLE ENTRY SIZES ARE SHOWN IN TABLE 1.
FOR ALTERNATIVE ENTRY SIZES, PLEASE CONTACT DESIGN AUTHORITY.
- 4. BACKSHELL MATES TO MIL-DTL-38999 SERIES III & IV

RELEASED FOR PUBLICATION



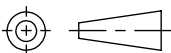
ALL RIGHTS RESERVED.

THIS DRAWING IS UNPUBLISHED.

BY

20

©

DIMENSIONS: MILLIMETERS	DWN: C.WALLACE 04/05/2021	MATERIAL: SEE SS0076		FINISH: SEE SS0076		
	CHK:	<div> TE Connectivity</div>				
TOLERANCES UNLESS OTHERWISE SPECIFIED: GENERAL TOL LINEAR $\pm 0.25\text{MM}$ ANGULAR $\pm 1^\circ$	APVD: M.PAUL 04/05/2021	PART NUMBER: 70H3-SE SERIES				
	PRODUCT SPEC: -	NAME: BRAID TAIL BACKSHELL, SWEPT ELBOW 90DEG				
	APPLICATION SPEC: -					
	WEIGHT:	SIZE A4	CAGE CODE U5792	DRAWING NO  P46887	RESTRICTED TO	
	CUSTOMER DRAWING			SCALE 1:1	SHEET 1 OF 2	REV AA

REVISIONS

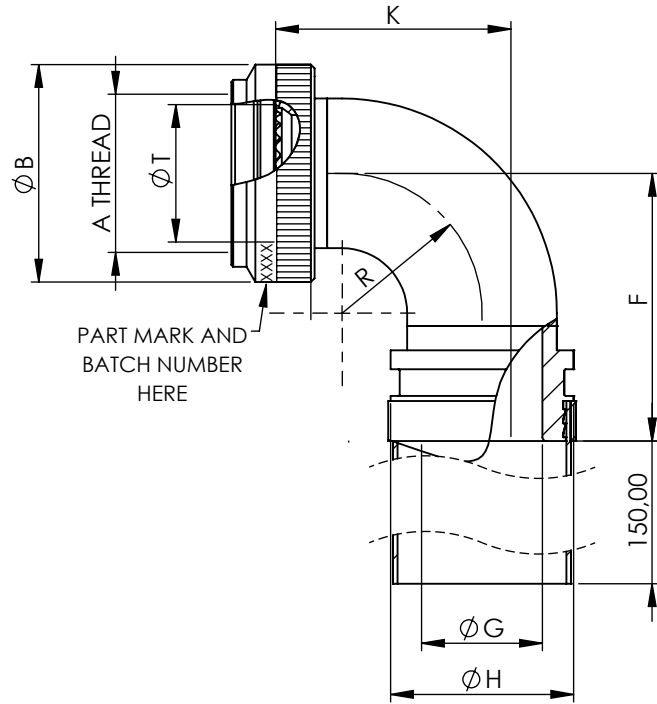
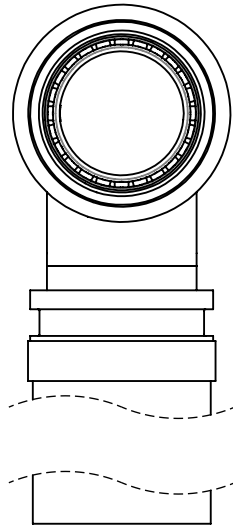


TABLE 1

SHELL SIZE	A THREAD	ØB MAX	K MAX	F MAX	R REF.	ØT MIN	ENTRY SIZES
09	M12 x 1.0	18,0	19,2	26,9	9,0	6,7	04
11	M15 x 1.0	21,0	22,4	30,1	12,2	10,2	04, 05
13	M18 x 1.0	24,5	25,6	33,3	15,4	13,5	06, 07
15	M22 x 1.0	29,0	28,7	36,4	18,5	16,2	07, 08
17	M25 x 1.0	32,5	31,9	39,6	21,7	19,4	08, 10
19	M28 x 1.0	35,5	35,1	42,8	24,9	21,8	10, 12
21	M31 x 1.0	37,0	38,3	46,0	28,1	25,1	12, 14
23	M34 x 1.0	40,0	41,4	49,1	31,2	28,2	14, 16
25	M37 x 1.0	43,5	44,6	52,3	34,4	31,4	16, 18

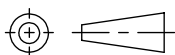
TABLE 2

ENTRY SIZE	ØG MIN	ØH MAX
04	6,35	13,60
05	7,92	13,60
06	9,52	18,40
07	11,12	18,40
08	12,70	18,40
10	15,87	24,70
12	19,05	24,70
14	22,23	31,10
16	25,40	31,10
18	28,60	33,70

THIS DRAWING IS UNPUBLISHED.

ALL RIGHTS RESERVED.

COPYRIGHT 20 BY

DIMENSIONS:
MILLIMETERSTOLERANCES UNLESS
OTHERWISE SPECIFIED:GENERAL TOL
LINEAR $\pm 0,25\text{MM}$
ANGULAR $\pm 1^\circ$ 

DWN: C.WALLACE

04/05/2021

MATERIAL: SEE SS0076

FINISH: SEE SS0076

CHK:

APVD: M.PAUL

04/05/2021

PRODUCT SPEC:

APPLICATION SPEC:

WEIGHT:



TE Connectivity

PART NUMBER:

70H3-SE SERIES

NAME:

BRAID TAIL BACKSHELL, SWEEP ELBOW 90DEG

SIZE
A4CAGE CODE
U5792DRAWING NO
C-P46887

RESTRICTED TO

CUSTOMER DRAWING

SCALE
1:1SHEET
2 OF 2REV
AA