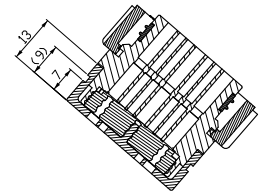
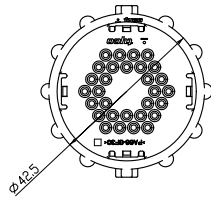
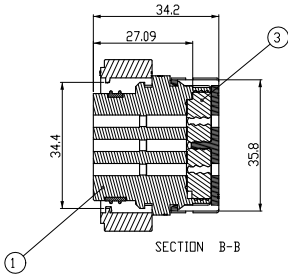
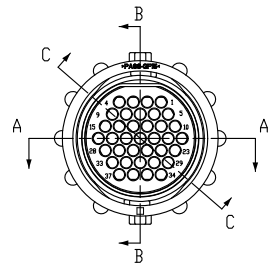
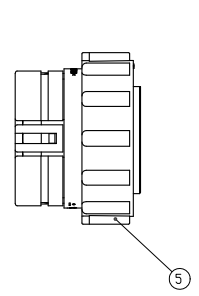
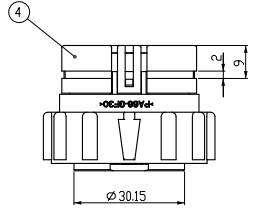
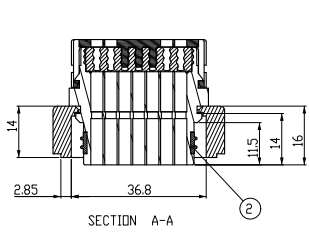
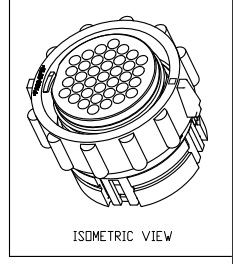


LOC	DIST	REVISIONS					
DS	-	P	LYR	DESCRIPTION	DATE	DWN	APVD
		A		RELEASED	09.JUL'07	DG	JK
		B		REVISED (ECR-09-008790)	16.JUL'09	KT	HG



- NOTE
- 본 부품은 ES91500-00을 만족할 것.
 - <상대 CONNECTOR P/N: 91206-82000 (TE P/N: 1897260)와 ASS'Y 상태에서 만족할 것>
 - 각 단자 삽입력은 TE Production Spec. 108-10042(4.2磅)를 따를 것.
 - 다음 사용환경을 만족할 것.
 - 내열성: -40 ~ 150 °C
 - 내유성: 상기온도 인진오일에서 내유성 확보할 것.
 - 내진성: 30G
 - 가능성 유해한 흄, 균열, 결함 등이 없을 것.
 - APPLIED TERMINAL P/N: SEE TABLE 1
 - MATING TAB P/N: SEE TABLE 2
 - 지시하지 않은 ROUND는 지면 R로 할 것.
 - DRAFT ANGLE MAX. 0.5°
 - FLASH=MAX 0.2, WARPAGE=MAX 0.2
 - 표시하지 않은 일반 공차는 ES02514-00의 2급을 따를 것.
 - 단자 삽입시 SEAL PROTECTOR(P/N:208338-1)를 반드시 사용할 것.

< TABLE 1 >

TYPE	PART NO.	WIRE SIZE(mm ² /AWG)	INSULATION DIA.(mm)	CONDUCTOR STRANDING (NUMBER X AWG)
III+	66100-8	0.85 / 18	1.778	19 X 30

< TABLE 2 >

TYPE	PART NO.	WIRE SIZE(mm ² /AWG)	INSULATION DIA.(mm)	CONDUCTOR STRANDING (NUMBER X AWG)
III+	66098-8	0.85 / 18	1.778	19 X 30

QTY	FINISH/COLOR	MATERIAL	DESCRIPTION	PART NO.	Q'TY	1897263-1	ASSY P/N
5	BLACK	PA66-GF15	COUPLING RING	1897265-2	1		
4	BLACK	PA66-GF30	COVER HOUSING	1897262-2	1		
3	RED	SILICON RUBBER	FAMILY SEAL	1897905-6	1		
2	RED	SILICON RUBBER	INNER SEAL	1897906-6	1		
1	BLACK	PA66-GF30	PLUG HOUSING	1897264-2	1		

THIS DRAWING IS A CONTROLLED DOCUMENT FOR TYCO ELECTRONICS CORPORATION. IT IS SUBJECT TO CHANGE AND THE CONTROLLING ENGINEERING ORGANIZATION SHOULD BE CONTACTED FOR THE LATEST REVISION.

DIMENSIONS: (MM)		TO DIMENSIONS UNLESS OTHERWISE SPECIFIED		DWN: KT JANG		AMP KOREA Kyungson, Korea	
		0 PLC ± 1 PLC ± 2 PLC ± 3 PLC ± 4 DEC. ANGLES ±		CHK: JW JANG		NAME	
MATERIAL: SEE TABLE		FINISH: -		APVD: HJ OH		PRODUCT SPEC	
				APPLICATION SPEC		SIZE: A2	
				WEIGHT		CAGE CODE: 00779	
				CUSTOMER DRAWING		DRAWING NO: C=1897263	
				SCALE: 1:1		RESTRICTED TO: -	
				SHEET: 1 OF 1		REV: B	