

REVISIONS					
P	LTR	DESCRIPTION	DATE	DWN	APVD
A		RELEASED	15MAY2019	CJV	JW
B		REVISED PER ECO-19-011736	06AUG2019	AP	JW
C		REVISED PER ECO-20-016913	01DEC2020	TX	DZ

1 HOUSING, ORGANIZER, CONTACT OVERMOLDS - LCP, UL94-V0, BLACK.
CONTACTS AND HOLD DOWNS - COPPER ALLOY.
PICK AND PLACE TAPE - POLYIMIDE FILM.

2 CONTACTS - GOLD PLATE ON MATING SURFACES,
TIN PLATE ON SOLDER FEET.
HOLD DOWNS - TIN PLATE.

3 DATUMS AND BASIC DIMENSIONS ESTABLISHED BY CUSTOMER.

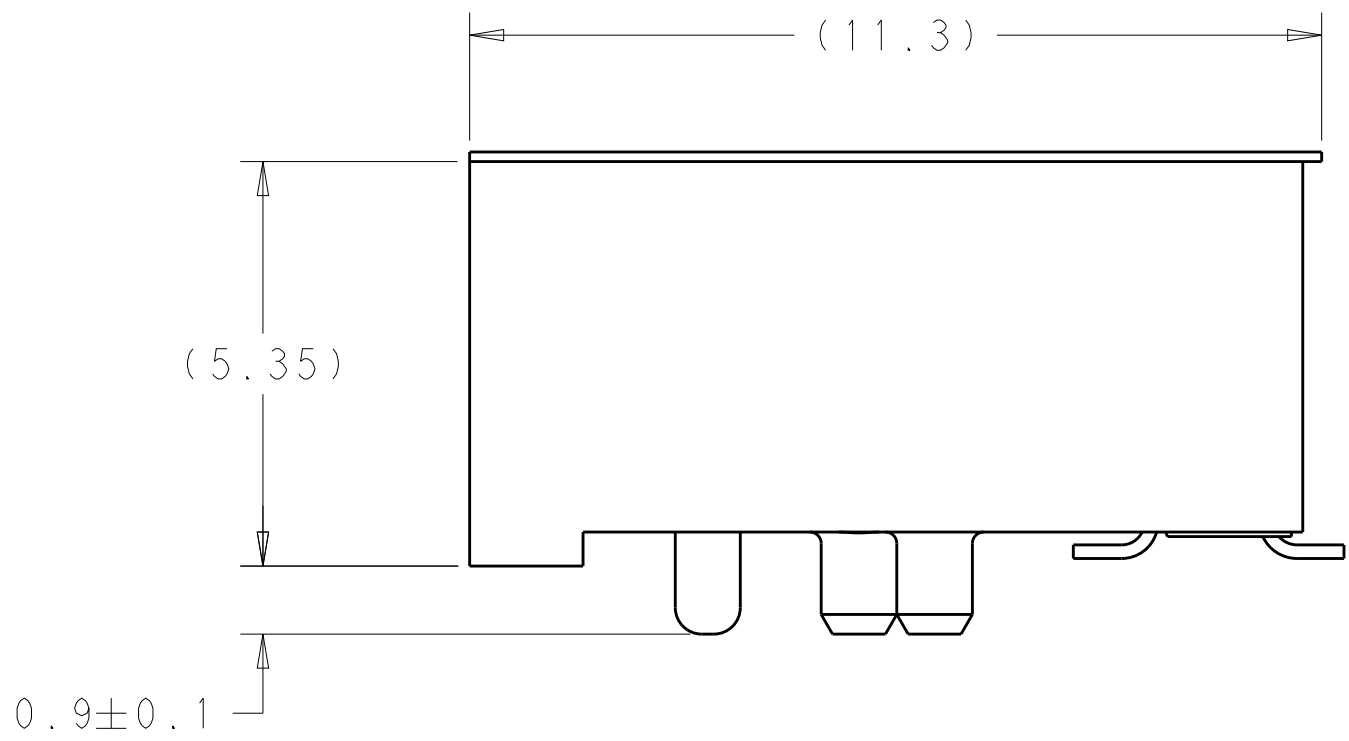
4. MINIMUM HOST PCB THICKNESS: 1.5.

5 SEE MSA SPECIFICATION FOR ADDITIONAL PADDLE CARD LAYOUTS
COMPATABLE WITH THIS RECEPTACLE AND FOR OPTIONAL SPLIT
CONTACT PAD LAYOUTS FOR THE PADDLE CARD. SPECIFICATION
PINOUT MAY ALSO DESIGNATE PAD SEQUENCE DIFFERENT FROM
ILLUSTRATION.

6 POSITIONS DESIGNATED AS "SIGNAL" ARE REQUIRED LOCATIONS FOR
HIGH SPEED DIFFERENTIAL PAIR SIGNALING. THESE LOCATIONS
MAY ALSO BE USED FOR SUPPORTING SIDEBAND SIGNALS OR OTHER
UTILITY PURPOSES. POSITIONS DESIGNATED AS "GROUND" ARE
REQUIRED WHEN SUPPORTING HIGH SPEED DIFFERENTIAL SIGNALS.
THESE LOCATIONS MAY ALSO BE USED FOR SIDEBAND SIGNALS OR
OTHER UTILITY PURPOSES.

7 COMPONENT AND TRACE KEEP OUT AREA. EACH EDGE 0.15 MIN FROM
EDGE OF HOLE.

8 TAPE AND REEL PACKAGED FOR PICK AND PLACE SMT PROCESSING,
SEE FIGURE 1. POCKET TAPE WIDTH = 56.



SEE SHEET 4
FOR PART TABLE

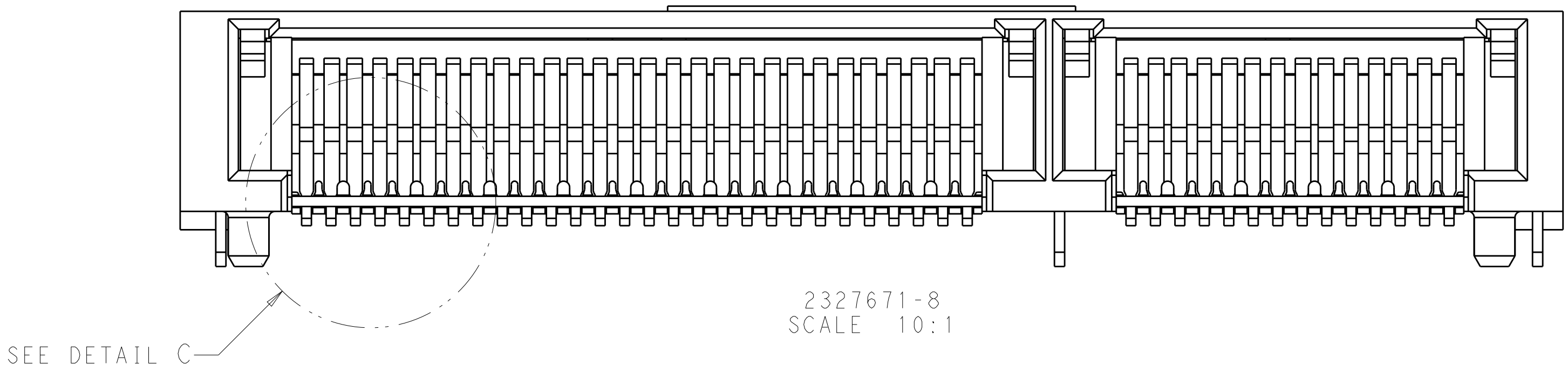
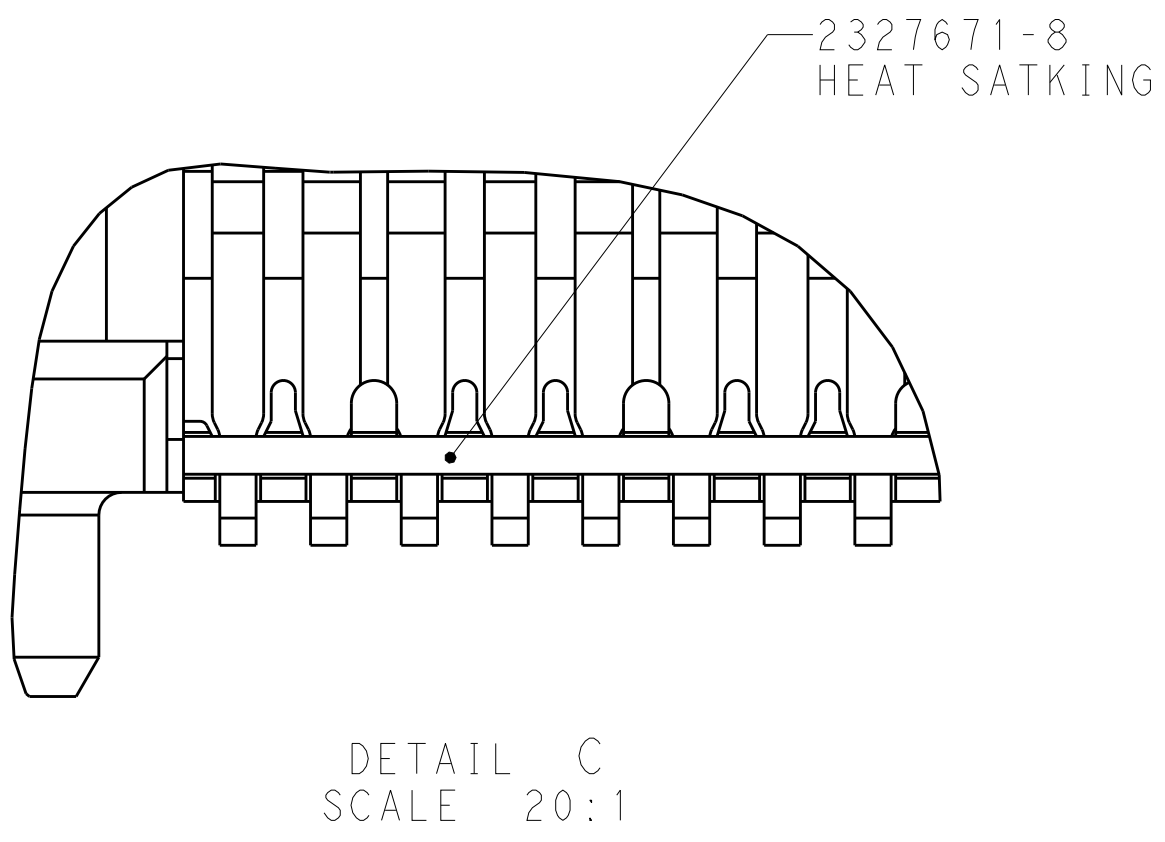
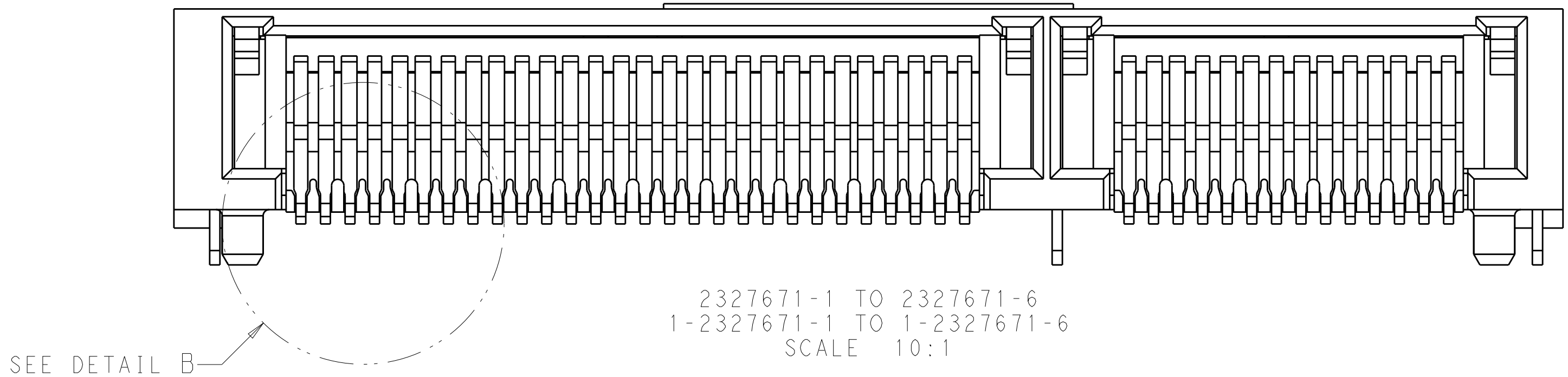
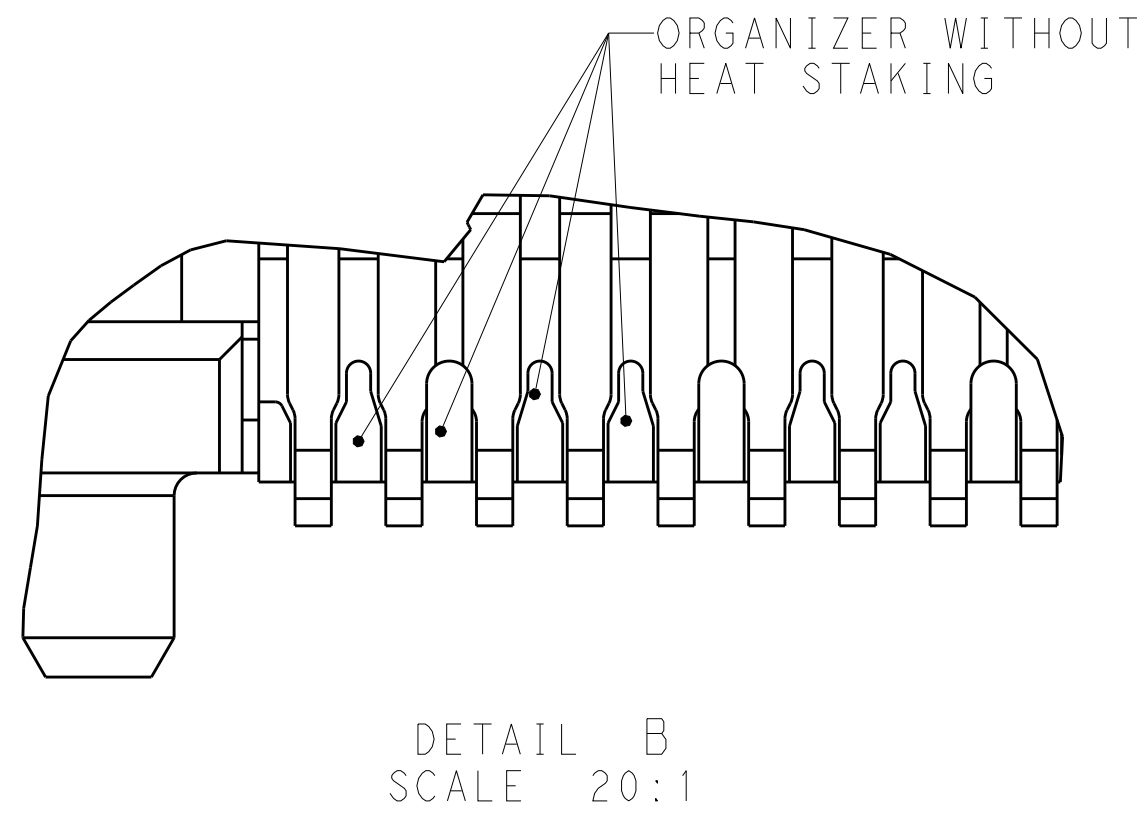
THIS DRAWING IS A CONTROLLED DOCUMENT.		DWN M. SHIRK 22FEB2018	TE Connectivity	
DIMENSIONS:		CHK D. HARMON 22FEB2018		
mm	TOLERANCES UNLESS OTHERWISE SPECIFIED:	APVD D. HARMON 22FEB2018	NAME RECEPTACLE ASSEMBLY, RIGHT ANGLE, 84 POSITION, SILVER 2.0	
	0 PLC	±	PRODUCT SPEC	
	1 PLC	±	108-130021	
	2 PLC	±	APPLICATION SPEC	
	3 PLC	±	114-130008	
MATERIAL	FINISH	WEIGHT	SIZE A1	
CUSTOMER DRAWING		SCALE 10:1		SHEET 1 OF 5
		REV C		

D

C

B

A



D

C

B

A

THIS DRAWING IS A CONTROLLED DOCUMENT.

DIMENSIONS:

MATERIAL

TOLERANCES UNLESS OTHERWISE SPECIFIED:

0 PLC	±
1 PLC	±
2 PLC	±
3 PLC	±
4 PLC	±
ANGLES	±
FINISH	±

FINISH

DWN

CHK

APVD

PRODUCT SPEC

APPLICATION SPEC

WEIGHT

NAME

SIZE: A 1

CAGE CODE

DRAWING NO

RESTRICTED TO

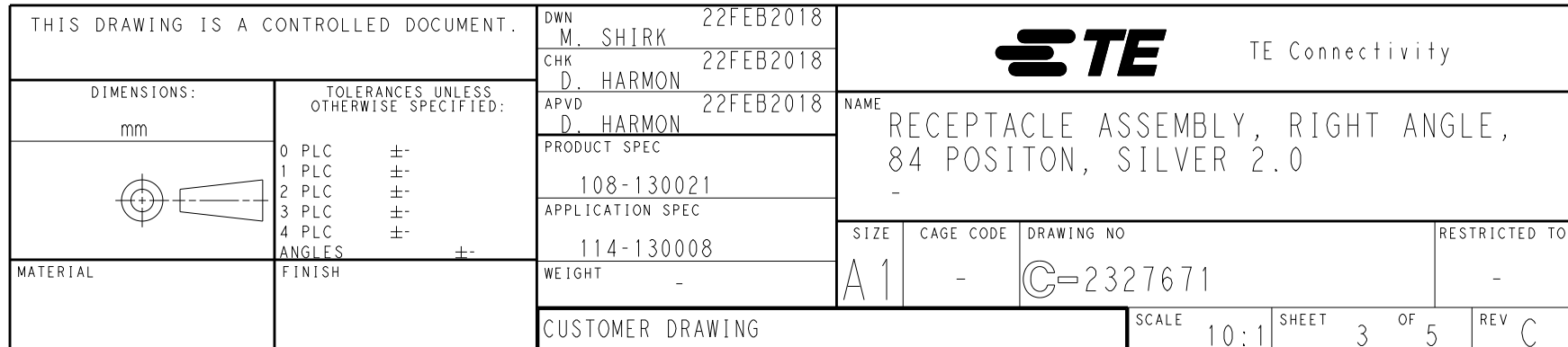
TE Connectivity

SCALE

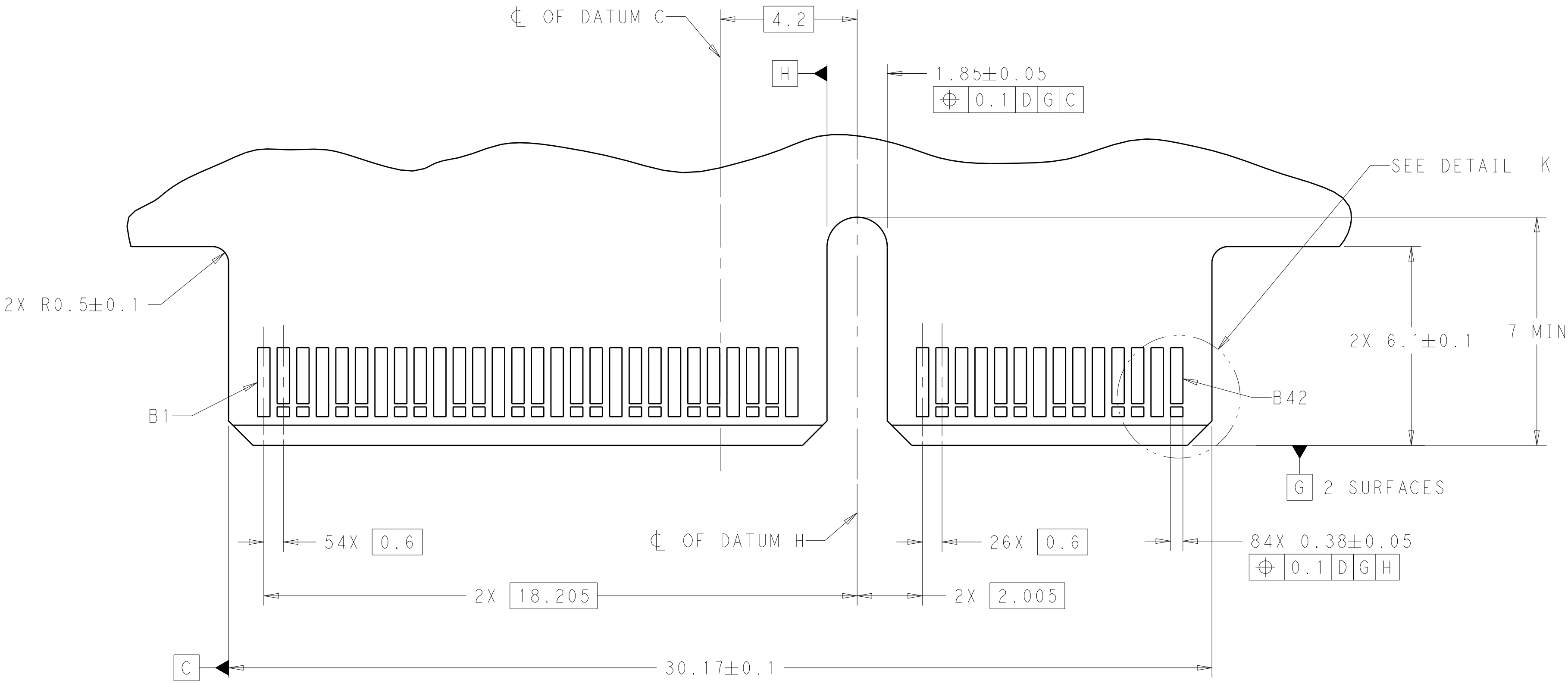
SHEET

OF

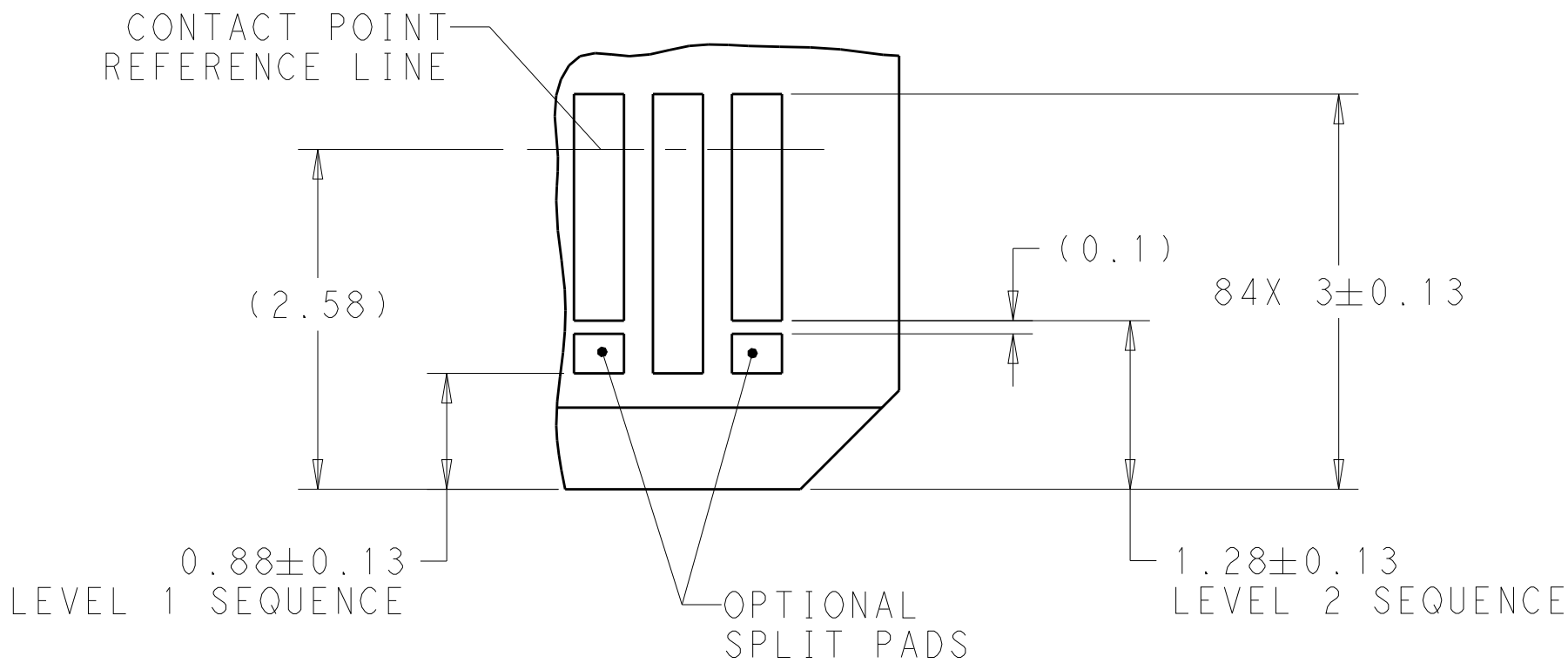
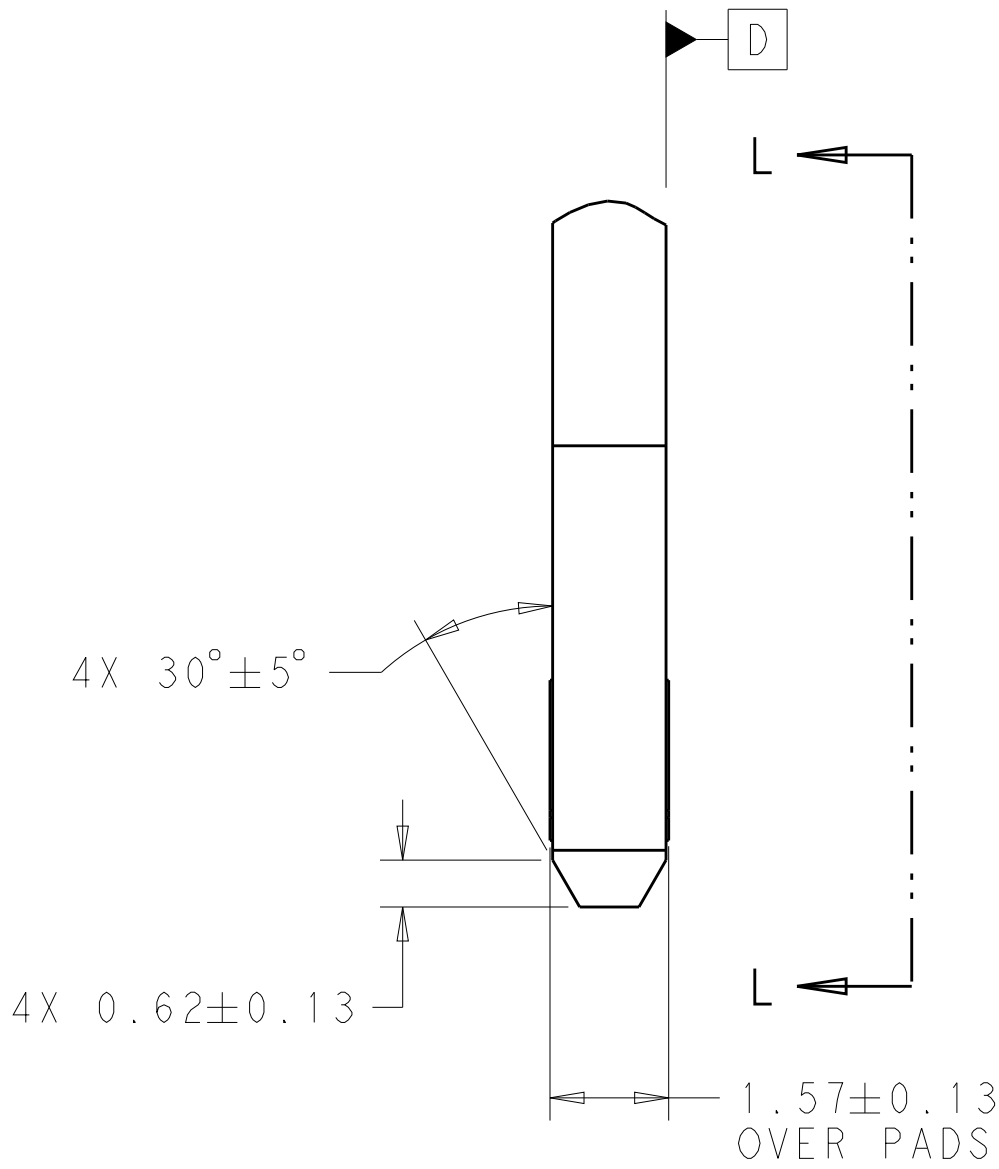
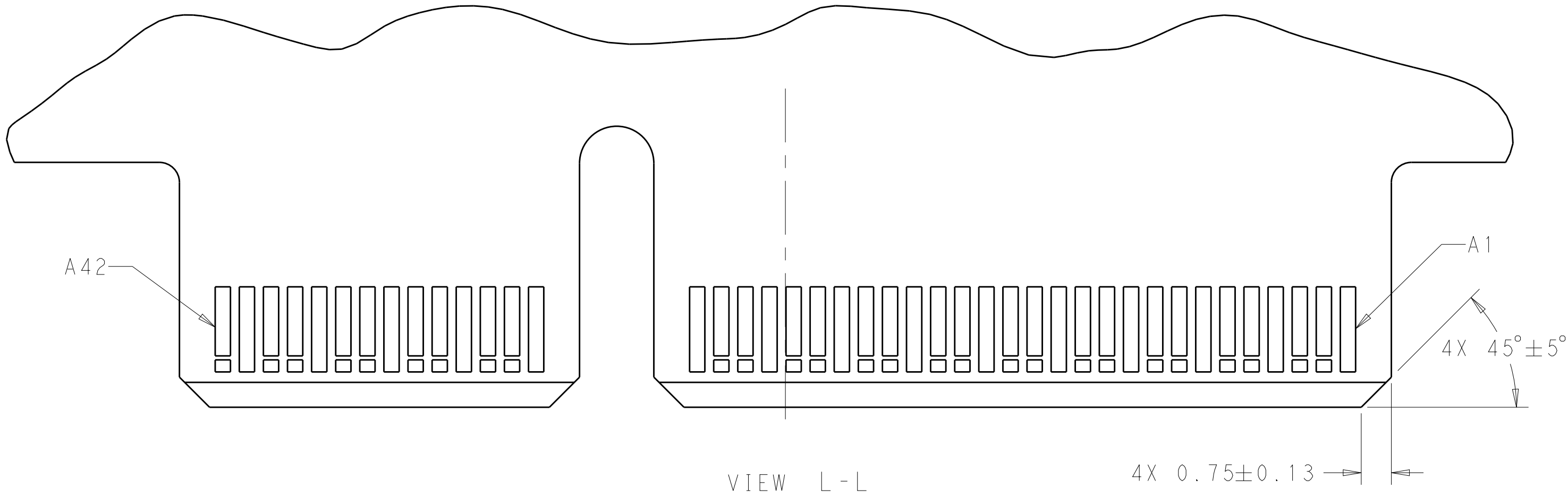
REV



REVISIONS					
P.	LTR.	DESCRIPTION	DATE	DWN.	APVD.
	-	SEE SHEET 1	-	-	-



RECOMMENDED PCB OUTLINE DIMENSIONS:
TOLERANCE VALUES ARE CRITICAL. PLEASE BE SURE TO DESIGNATE
TOLERANCES TO PCB SUPPLIER TO ENSURE OPTIMIZED FUNCTIONALITY.



DETAIL K
SCALE 20:1

THIS DRAWING IS A CONTROLLED DOCUMENT.		DWN M. SHIRK 22FEB2018	TE Connectivity	
DIMENSIONS:		CHK D. HARMON 22FEB2018		
mm	TOLERANCES UNLESS OTHERWISE SPECIFIED:	APVD D. HARMON 22FEB2018	NAME RECEPTACLE ASSEMBLY, RIGHT ANGLE, 84 POSITON, SILVER 2.0	
	0 PLC	±"	PRODUCT SPEC	
	1 PLC	±"	108-130021	
	2 PLC	±"	APPLICATION SPEC	
	3 PLC	±"	114-130008	
MATERIAL	4 PLC	±"	WEIGHT	
	ANGLES	±"	-	
FINISH		CUSTOMER DRAWING		
		SIZE A1		RESTRICTED TO
		CAGE CODE -		
		DRAWING NO. 2327671		
		SCALE 10:1		
		SHEET 4 OF 5		
		REV C		

REVISIONS					
P	LTR	DESCRIPTION	DATE	DWN	APVD
-	-	SEE SHEET 1	-	-	-

TABLE 1: CONNECTOR CONTACT IDENTIFICATION 

CONTACT NUMBER	SIDE A	SIDE B
1	GROUND	GROUND
2	SIGNAL	SIGNAL
3	SIGNAL	SIGNAL
4	GROUND	GROUND
5	SIGNAL	SIGNAL
6	SIGNAL	SIGNAL
7	GROUND	GROUND
8	SIGNAL	SIGNAL
9	SIGNAL	SIGNAL
10	GROUND	GROUND
11	SIGNAL	SIGNAL
12	SIGNAL	SIGNAL
13	GROUND	GROUND
14	SIGNAL	SIGNAL
15	SIGNAL	SIGNAL
16	GROUND	GROUND
17	SIGNAL	SIGNAL
18	SIGNAL	SIGNAL
19	GROUND	GROUND
20	SIGNAL	SIGNAL
21	SIGNAL	SIGNAL
22	GROUND	GROUND
23	SIGNAL	SIGNAL
24	SIGNAL	SIGNAL
25	GROUND	GROUND
26	SIGNAL	SIGNAL
27	SIGNAL	SIGNAL
28	GROUND	GROUND
29	GROUND	GROUND
30	SIGNAL	SIGNAL
31	SIGNAL	SIGNAL
32	GROUND	GROUND
33	SIGNAL	SIGNAL
34	SIGNAL	SIGNAL
35	GROUND	GROUND
36	SIGNAL	SIGNAL
37	SIGNAL	SIGNAL
38	GROUND	GROUND
39	SIGNAL	SIGNAL
40	SIGNAL	SIGNAL
41	GROUND	GROUND
42	GROUND	GROUND

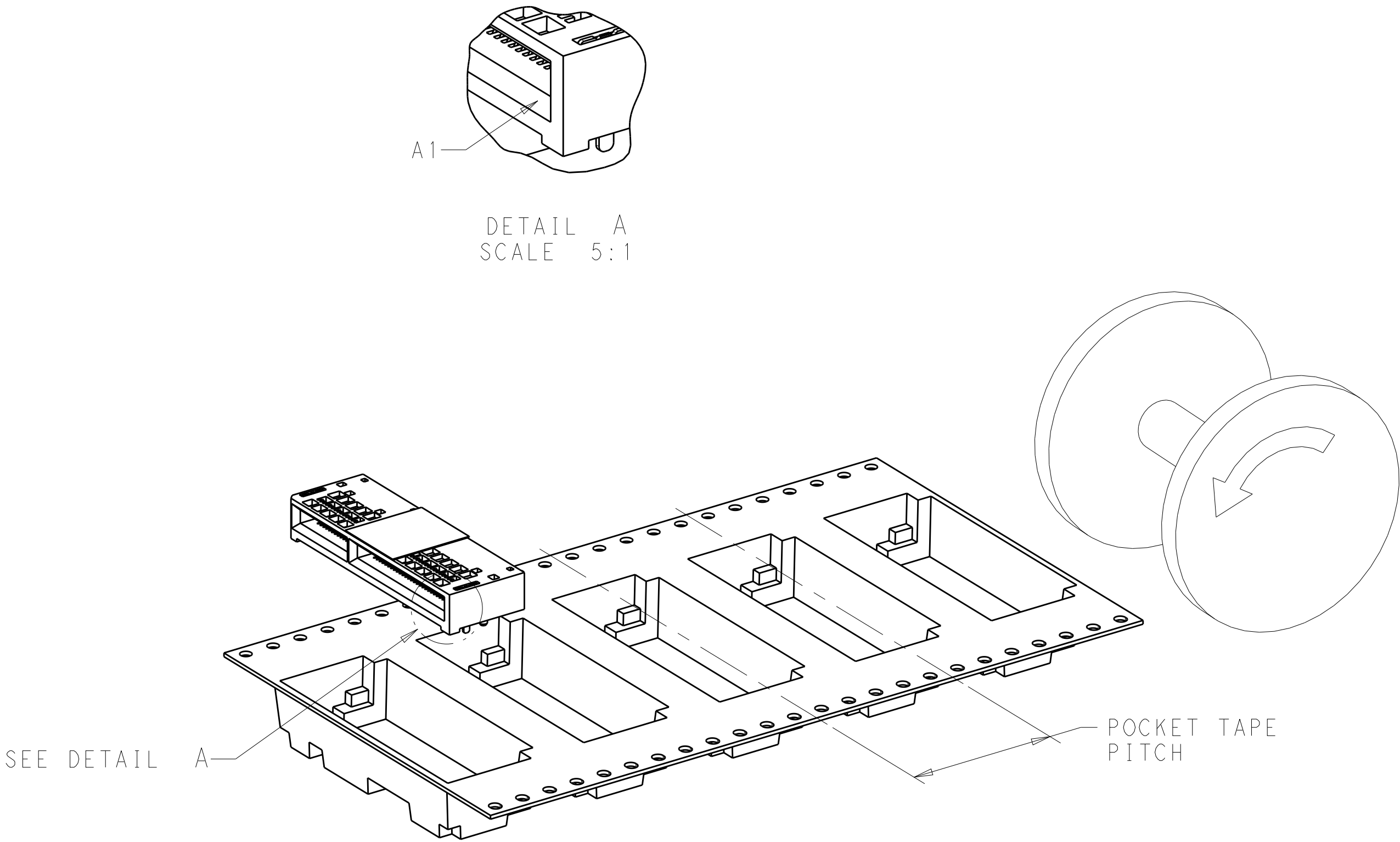



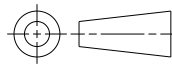
FIGURE 1 
DIRECTION OFF TOP OF REEL
FOR USER UNREELING
SHOWN AS 2327671-1 THRU 2327671-6
SCALE 2:1

ENDS	0.76µm Au	24	400	NO	200	1-2327671-6
ENDS	0.38µm Au				100	1-2327671-5
ENDS	FLASH Au/PdNi				50	1-2327671-4
ALL	0.76µm Au	24	400	NO	200	1-2327671-3
ALL	0.38µm Au				100	1-2327671-2
ALL	FLASH Au/PdNi				50	1-2327671-1
ALL	0.76µm Au	20	500	YES	200	2327671-8
ENDS	0.76µm Au	20	500	YES	200	2327671-6
ENDS	0.38µm Au				100	2327671-5
ENDS	FLASH Au/PdNi				50	2327671-4
ALL	0.76µm Au	20	500	YES	200	2327671-3
ALL	0.38µm Au				100	2327671-2
ALL	FLASH Au/PdNi				50	2327671-1
HOLD DOWNS	PLATING	POCKET TAPE PITCH	REEL QUANTITY	PICK AND PLACE TAPE	MATING CYCLES	PART NUMBER

THIS DRAWING IS A CONTROLLED DOCUMENT.

DIMENSIONS:

mm



TOLERANCES UNLESS OTHERWISE SPECIFIED:

0 PLC ±°

1 PLC ±°

2 PLC ±°

3 PLC ±°

4 PLC ±°

ANGLES ±°

FINISH

MATERIAL

DWN M. SHIRK 22FEB2018

CHK D. HARMON 22FEB2018

APVD D. HARMON 22FEB2018

PRODUCT SPEC

108-130021

APPLICATION SPEC

114-130008

WEIGHT

-

CUSTOMER DRAWING

NAME

RECEPTACLE ASSEMBLY, RIGHT ANGLE, 84 POSITON, SILVER 2.0

SIZE

A1

CAGE CODE

-

DRAWING NO

©=2327671

RESTRICTED TO

-

SCALE

10:1

SHEET


5

OF

5

REV

C

 TE Connectivity