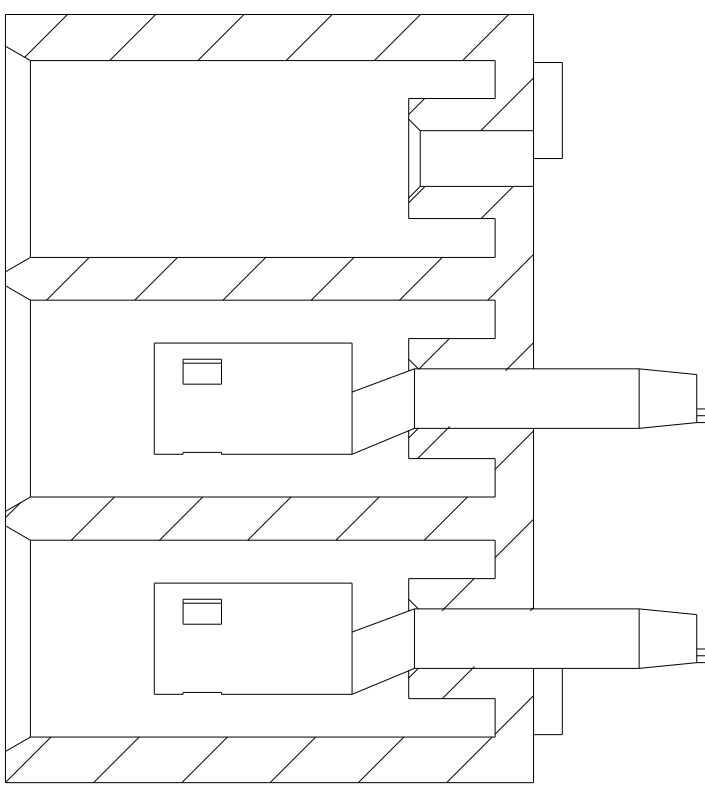
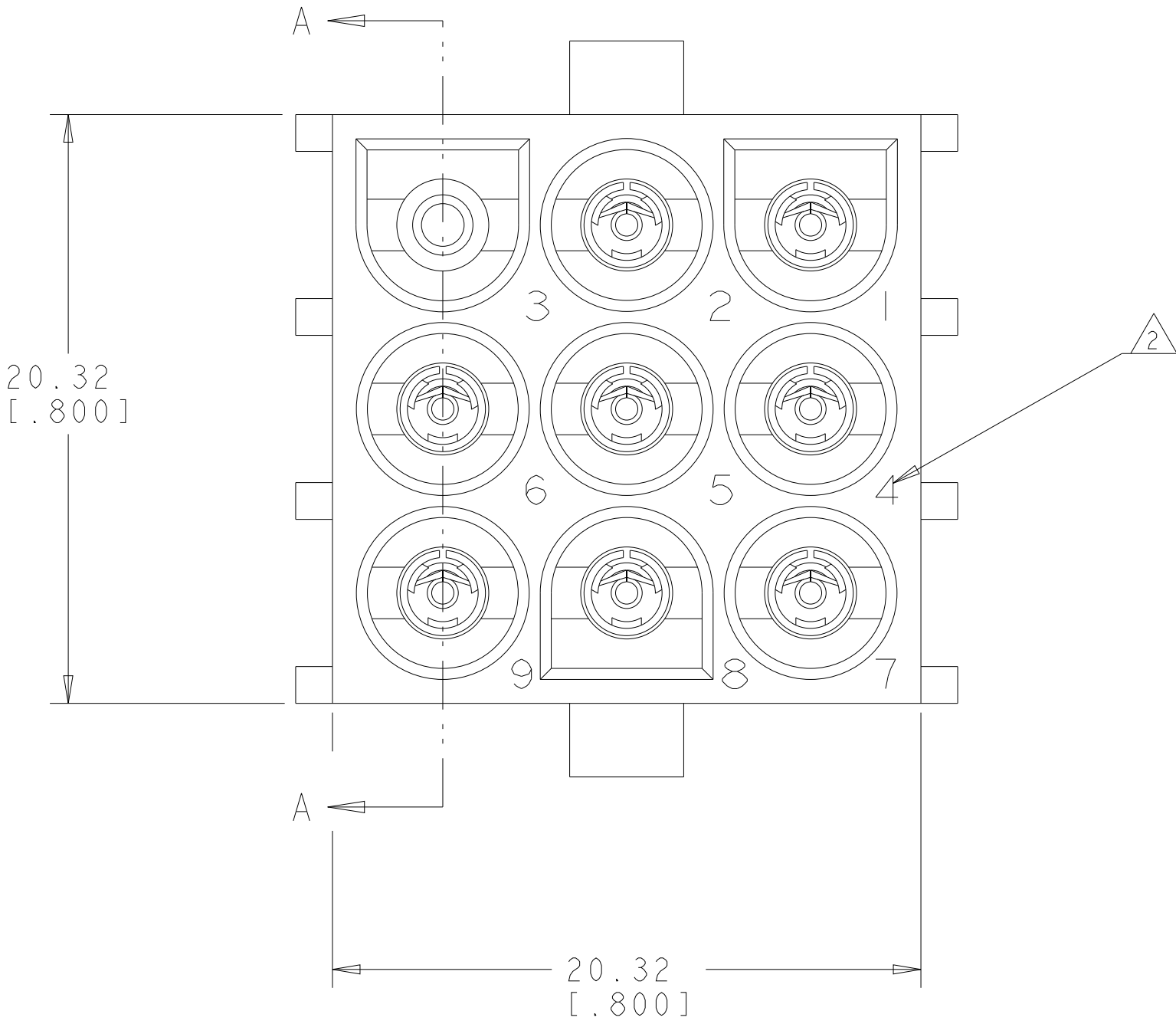
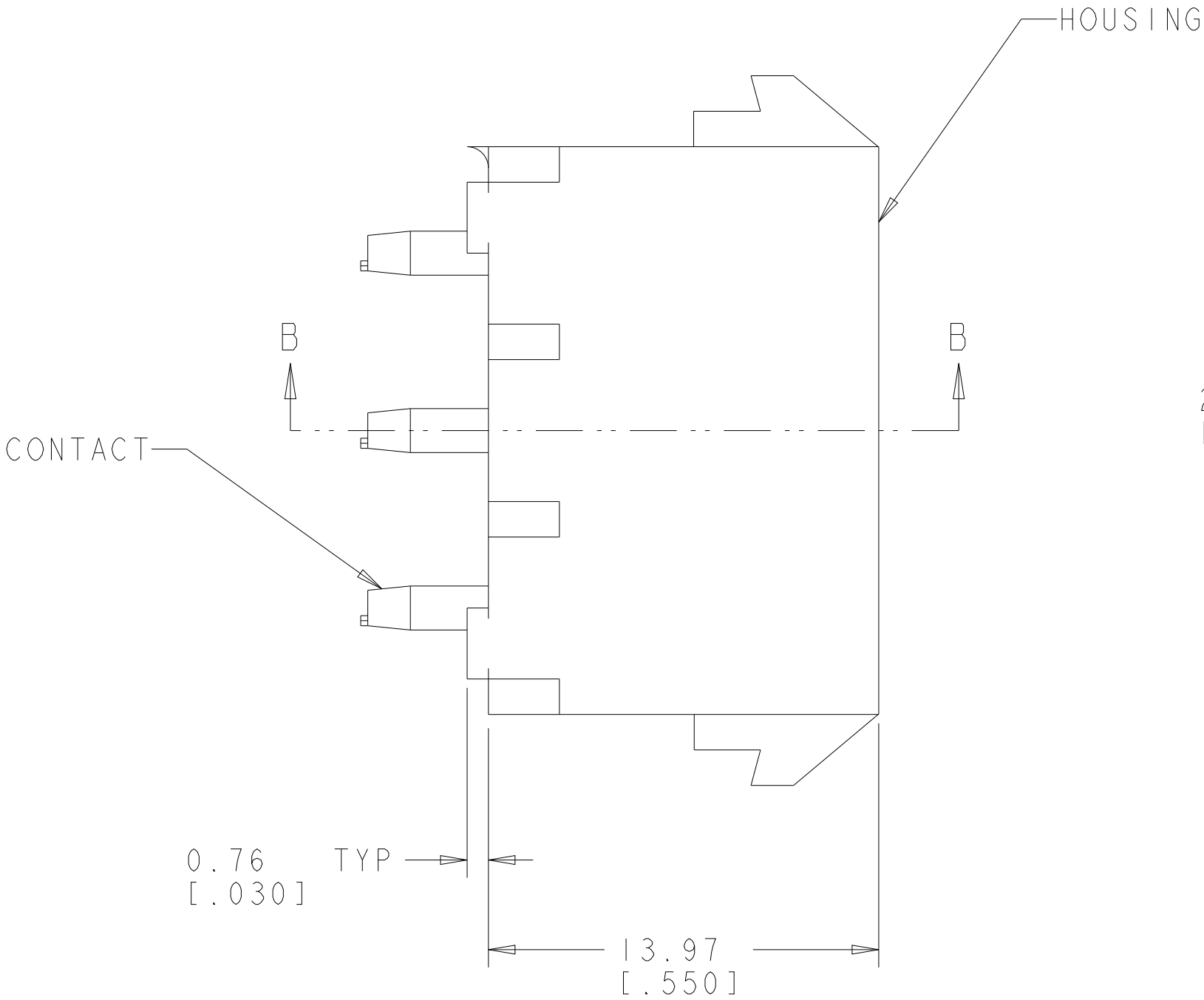
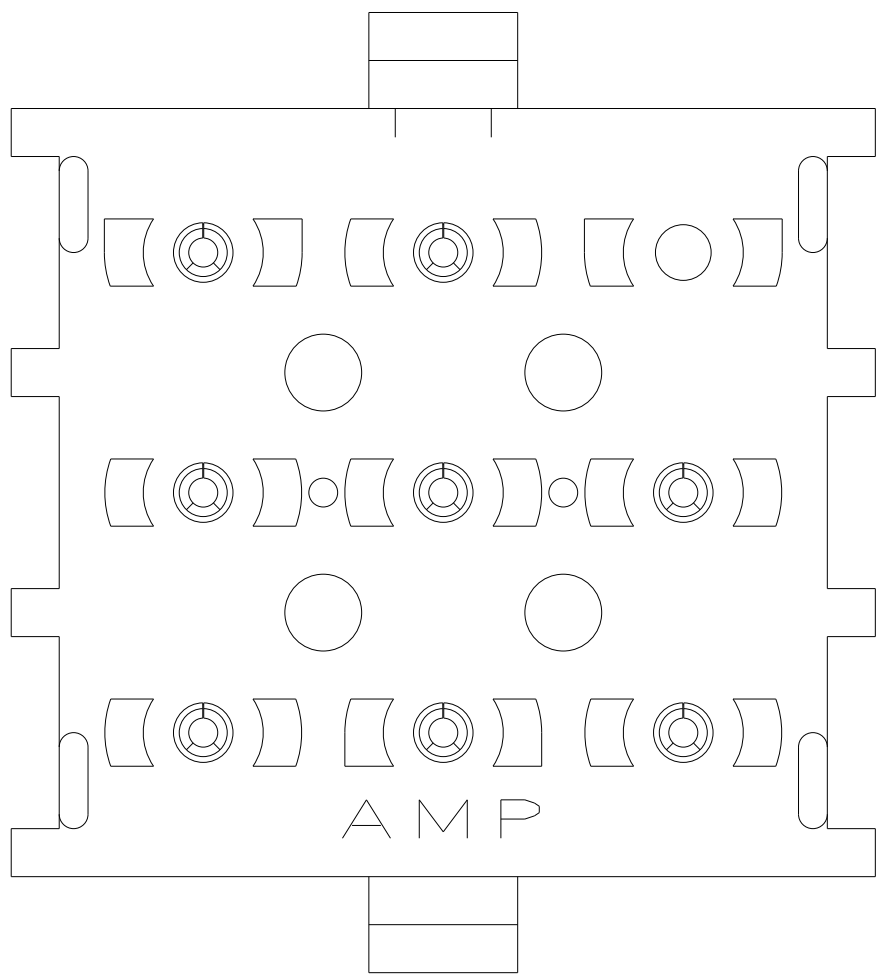


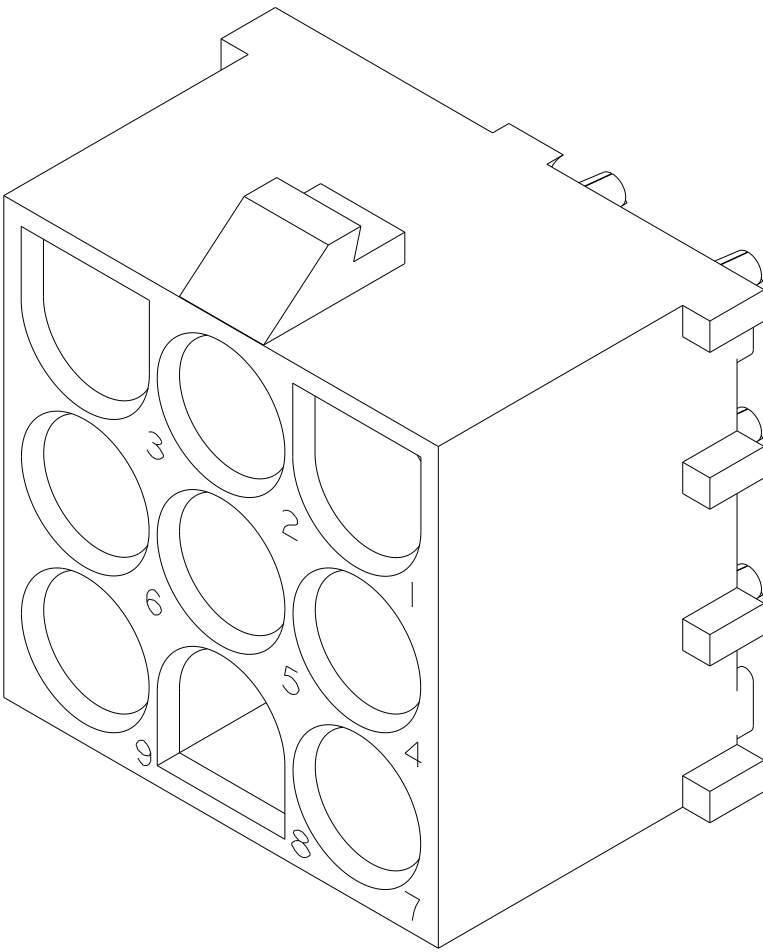
LOC		DIST		REVISIONS				
CM	00	P	LTR	DESCRIPTION	DATE	DWN	APVD	
		A		RELEASED PER WR-05-27	03MAY05	KW	SR	
		A1		REVISED PER ECR-21-118133	22OCT2021	SS	VS	

1. PARTS COMPLY TO AMP SOLDERABILITY SPECIFICATION 109-11-3.
- 2

 CIRCUIT IDENTIFICATION CHARACTERS ARE ADJACENT TO THE INDICATED CAVITIES, BUT LOCATION AND ORIENTATION MAY DIFFER FROM PRINT.
3. DIMENSIONS IN BRACKETS ARE IN INCHES.
4. DIMENSIONS SHOWN REPRESENT PRODUCT IN DRY CONDITION. ADDITIONAL 2% GROWTH DUE TO END USE LOCATION MOISTURE ABSORPTION MAY OCCUR AND SHOULDE BE ACCOUNTED FOR.

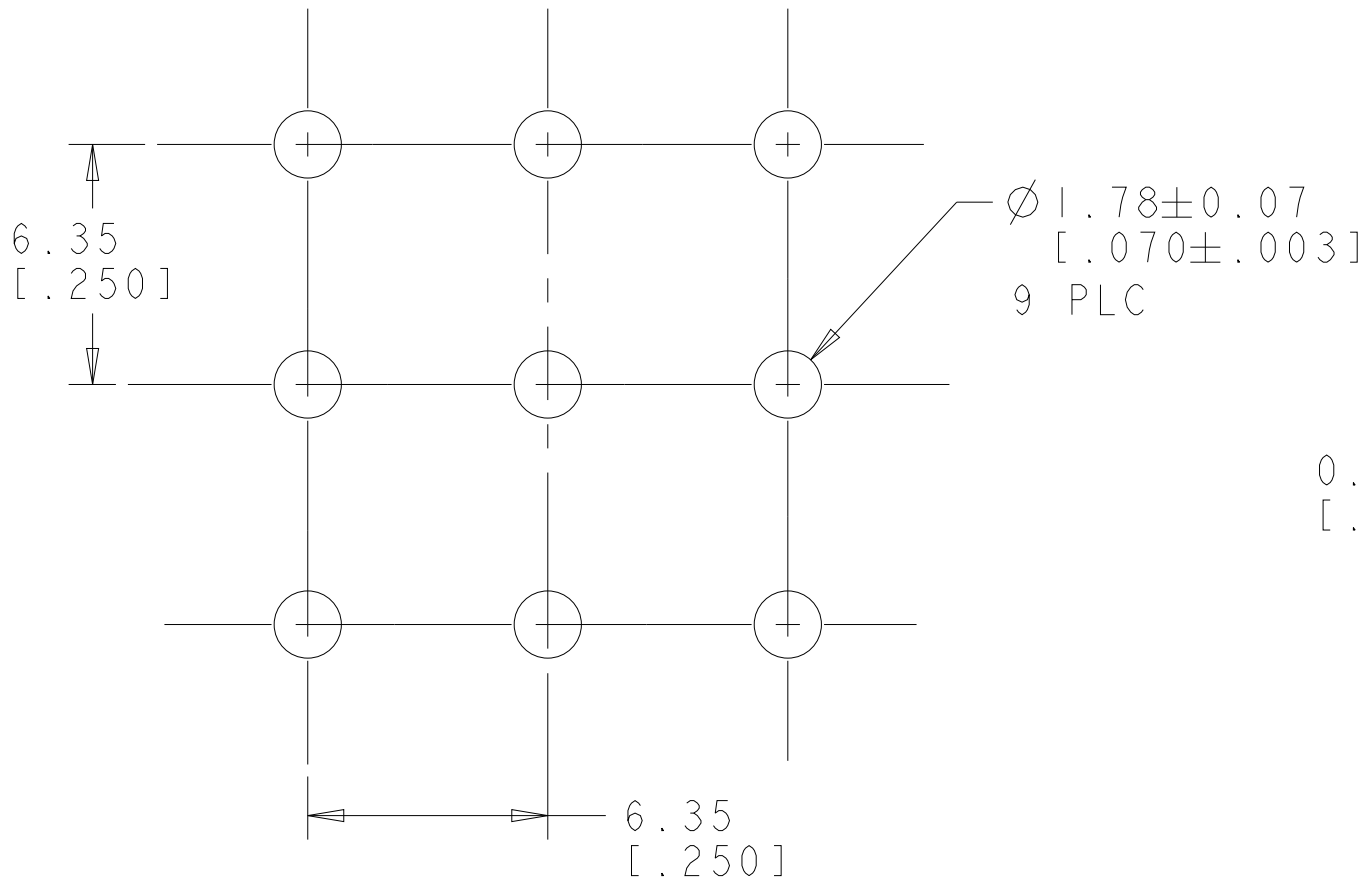


SECTION A-A

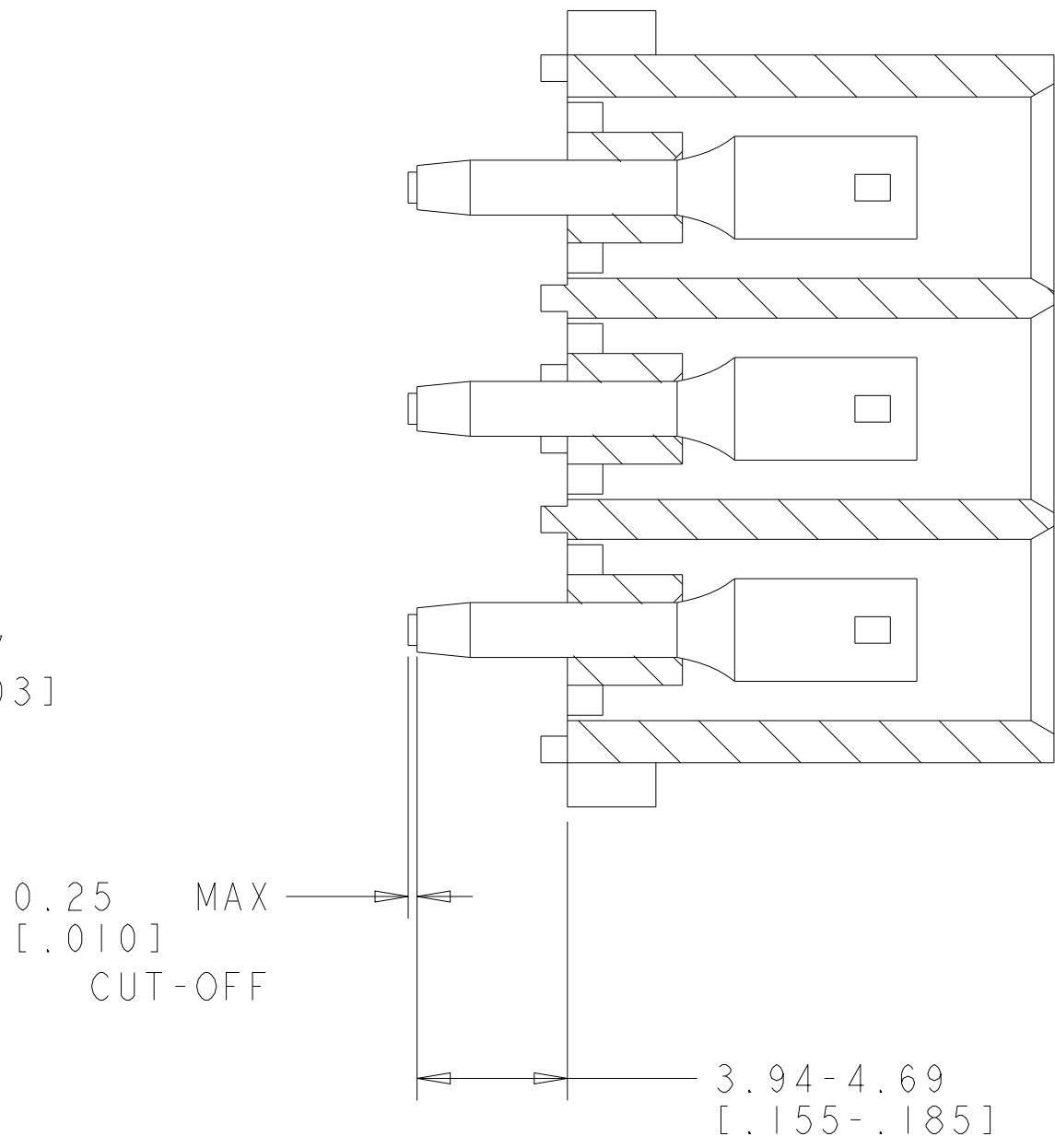


3 DIMENSIONAL MODEL
SCALE 4:1

1586682-3 SHOWN

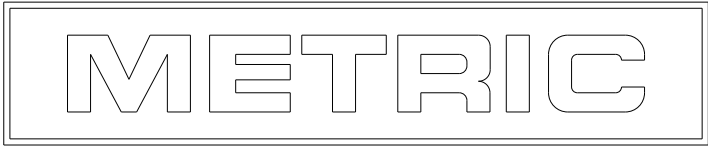


RECOMMENDED MOUNTING HOLE PATTERN
FOR 1.57 [.062] THICK P.C. BOARD
HOLE THAT CORRESPONDS TO REMOVED
CONTACT CAN BE OMITTED



SECTION B-B

7	PHOSPOR BRONZE, PRE-TIN	NYLON, UL94V-0,WHITE	1586682-7
3	PHOSPOR BRONZE, PRE-TIN	NYLON, UL94V-0,WHITE	1586682-3
SOCKET NO OMITTED	SOCKET CONTACT MATERIAL AND FINISH	HOUSING MATERIAL AND COLOR	PART NUMBER



THIS DRAWING IS UNPUBLISHED. IT IS THE PROPERTY OF TYCO ELECTRONICS CORPORATION. IT IS TO BE USED ONLY FOR THE PURPOSES SPECIFIED. IT IS NOT TO BE REPRODUCED OR TRANSMITTED IN ANY FORM OR BY ANY MEANS, ELECTRONIC OR MECHANICAL, INCLUDING PHOTOCOPYING, RECORDING, OR BY ANY INFORMATION STORAGE AND RETRIEVAL SYSTEM. WITHOUT PERMISSION IN WRITING FROM TYCO ELECTRONICS CORPORATION, NO PART OF THIS DRAWING MAY BE REPRODUCED OR TRANSMITTED IN ANY FORM OR BY ANY MEANS, ELECTRONIC OR MECHANICAL, INCLUDING PHOTOCOPYING, RECORDING, OR BY ANY INFORMATION STORAGE AND RETRIEVAL SYSTEM.		DWN K. WHITAKER 03MAY2005	tyco <i>Electronics</i> Tyco Electronics Harrisburg, PA 17105-3608		NAME SOCKET HEADER ASSEMBLY, 9 CIRCUIT,SELECTIVELY LOADED, UNIVERSAL MATE-N-LOK(TM)		SIZE CAGE CODE DRAWING NO RESTRICTED TO		
DIMENSIONS: mm[INCHES]		CHK S. RIDGILL 03MAY2005							
TOLERANCES UNLESS OTHERWISE SPECIFIED:		APVD S. RIDGILL 03MAY2005	PRODUCT SPEC		APPLICATION SPEC		WEIGHT		
0 PLC ±" 1 PLC ±" 2 PLC ±" 3 PLC ±" 4 PLC ±" ANGLES ±0°30'		±" ±" ±" ±" ±" ±"	±" ±" ±" ±" ±" ±"		±" ±" ±" ±" ±" ±"		±" ±" ±" ±" ±" ±"		
MATERIAL SEE TABLE		SEE TABLE		CUSTOMER DRAWING		SCALE 5:1		SHEET 1 OF 1	
								REV A1	