

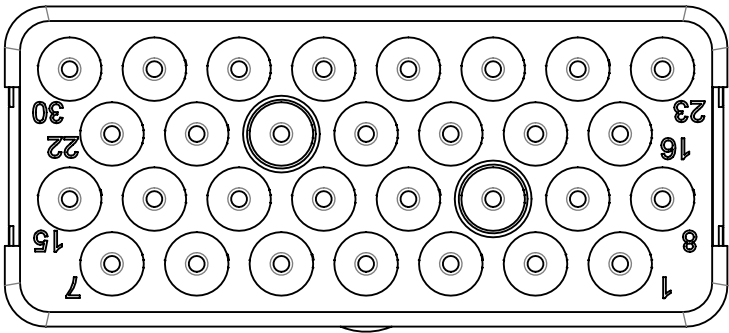
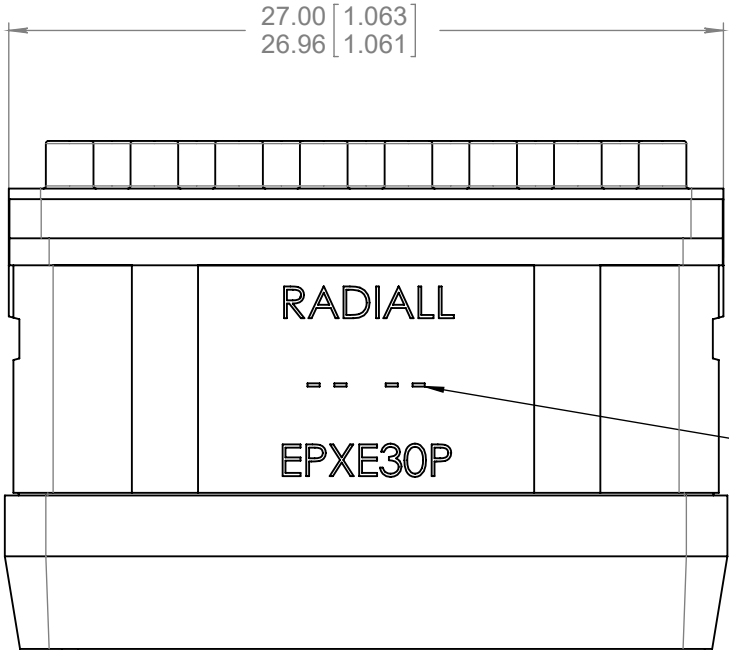
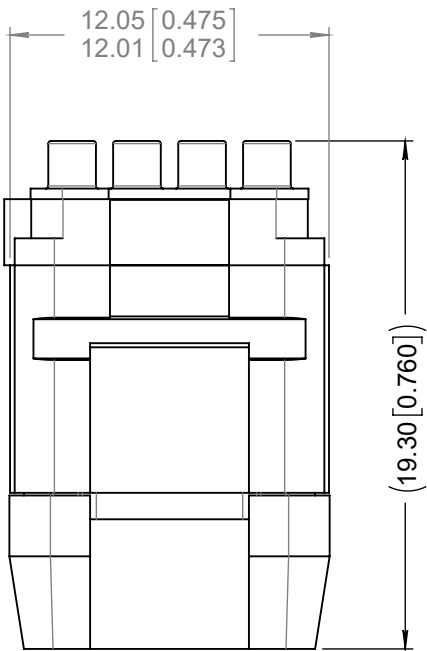
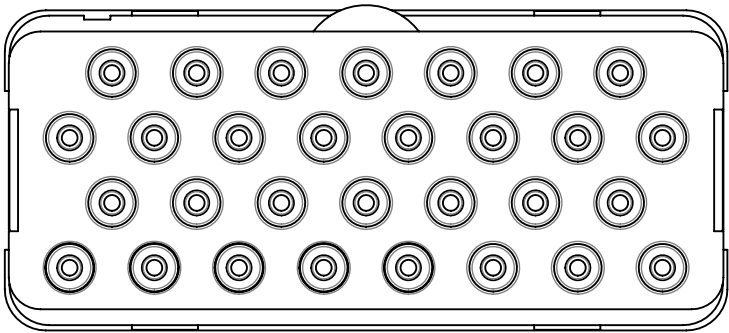
Series
EPX

30 POSITIONS ENVIRONMENTAL INSERT FOR SIZE 20 PIN CONTACTS

Issue:
Mar 26, 2013

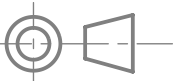
Page
1/1

MATING FACE



MATERIALS :
INSERT : THERMOSETTING FIBERGLASS FILLED OR HIGH GRADE THERMOPLASTIC
WITH METALLIC RETENTION CLIPS
INTERFACIAL SEAL : FLUOROSILICONE ELASTOMER

DIMENSIONS : mm (inch are given for information only)



Estimated weight : 6.7 g

4112_9311

CREATION PEN: NOM: MACARI DATE: 14 June, 93 APPR.:				
	Mar 26, 13	TDS Updated	Ceberio	LeGloahec
	Jan 10, 03	Modification of marking	Marques	Garcia
	Issue	Revisions	Name	Approved

EPXE30PEN

RADIAL PROPRIETARY INFORMATION

This document contains proprietary information and such information shall not be disclosed to any third party for any purpose whatsoever or used for manufacturing purposes without prior written agreement from RADIAL. This information is given as an indication. In the continual goal to improve our products, we reserve the right to make any modifications judged necessary.