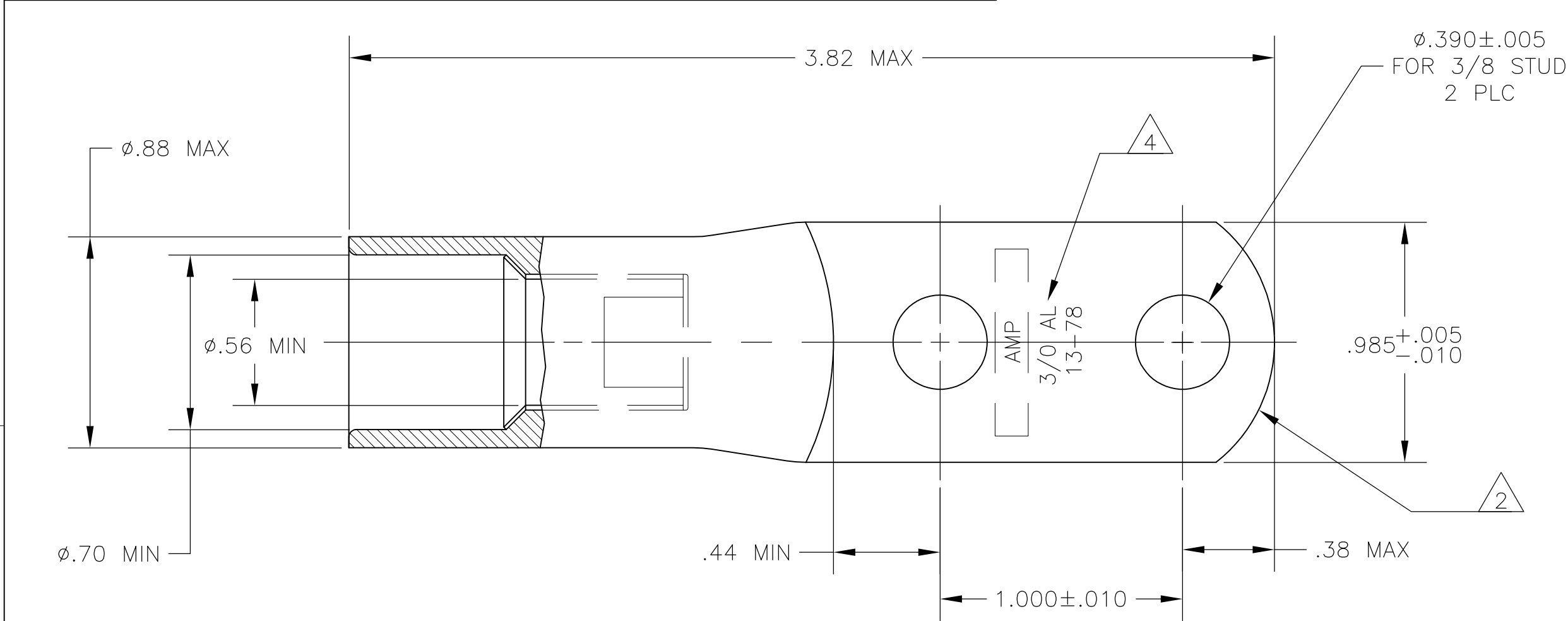
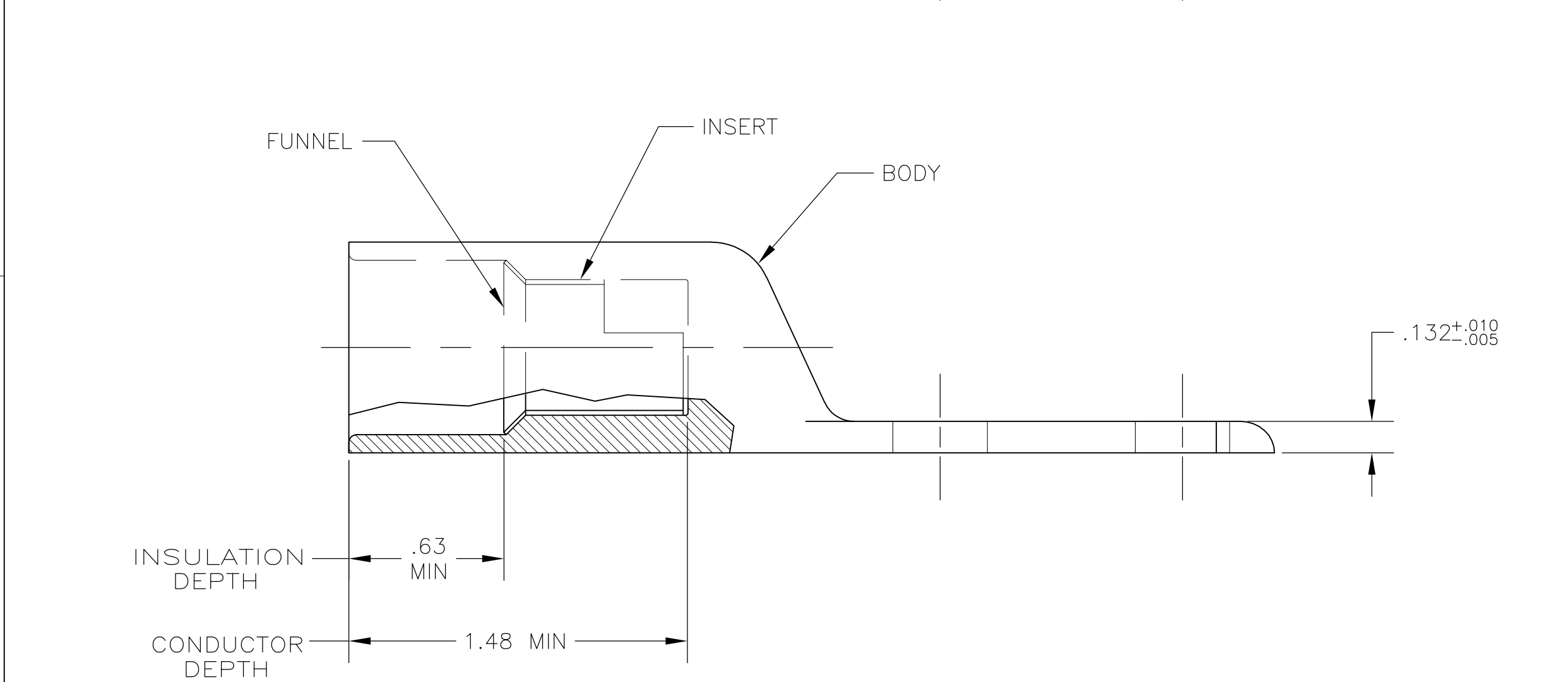


LOC	DIST	REVISIONS					
		P	LTR	DESCRIPTION	DATE	DWN	APVD
—	—		H	REVISED PER ECO-13-018297	26NOV13	MGM	CT



- 1 WIRE INSULATION: .571—.633 DIA
- 2 THE TONGUE RADIUS FEATURE IS NOT A TOOLING CONTROLLED DIMENSION AND MAY NOT BE A TRUE RADIUS.
- 3 .020 FLASH PERMITTED ON WIRE BARRELL DUE TO IMPACTING
- 4 STAMP "AMP 3/0 AL 13-78" SIZE AND LOCATION APPROX AS SHOWN
5. STUD HOLES SHALL HAVE NO DETACHABLE BURRS THAT WOULD RESULT IN EXPOSED BASE METAL



BODY: COPPER ASTM-B187 ANNEALED TIN PL PER ASTM B-545 .000150 MIN THK INSERT & FUNNEL: BRASS PER ASTM B36 NICKEL PLATE SAE AMS QQ-N-290A, DATED JULY 2000, .000100 MIN THK	696825-1
MATERIAL & FINISH	PART NO.

THIS DRAWING IS A CONTROLLED DOCUMENT.		DWN JR RUTH 30SEP05	TE Connectivity			
DIMENSIONS: INCHES		CHK MJ SPICER 30SEP05				
		APVD MJ SPICER 30SEP05	NAME			
		PRODUCT SPEC	WIRE TERMINAL, COPALUM SEALED, RING TONGUE, WIRE SIZE: 3/0 ALUMINUM			
MATERIAL SEE TABLE		FINISH SEE TABLE	WEIGHT 111 GRAMS	SIZE A2	CAGE CODE 00779	DRAWING NO C-696825
		CUSTOMER DRAWING		SCALE 2:1	SHEET 1 of 1	REV H