

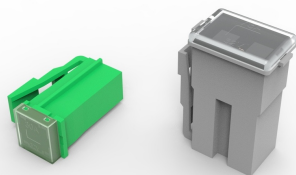
# PAL Fuses - 2935 Series

## Rated 32 V DC

RoHS

### Specifications

<b>Voltage Rating:</b>	32 V DC
<b>Current Cycling:</b>	24°C
<b>Operating Temperature Range:</b>	-40°C to +125°C
<b>Complies with</b>	JASO 0612



PAL Fuses - 2935 Series

### Description

Many Japanese automakers use 2935 Series Auto Link PAL fuses as original equipment. These cartridge fuses withstand extreme temperatures while protecting circuits for alternators and starters. During tests, each of the 2935 Series PAL fuses met its performance requirements when receiving 50 % of its ampere rating for 10 000 cycles when current flowed for 5 minutes and was shut off for 10 minutes. The tests were conducted while the temperature of the bolt-down cartridge fuse was 24 °C.

### Features & Benefits

- Color coding indicates ampere rating
- Snap securely onto posts
- Transparent covers make it easier to see when fuses blow

### Applications

- Cars made in Japan and the United States

### Ordering Information

Part Number	Package Size
02935xx.H	100
02935xx.U	500
02935xx.MXJ	1000

# PAL Fuses - 2935 Series

## Rated 32 V DC

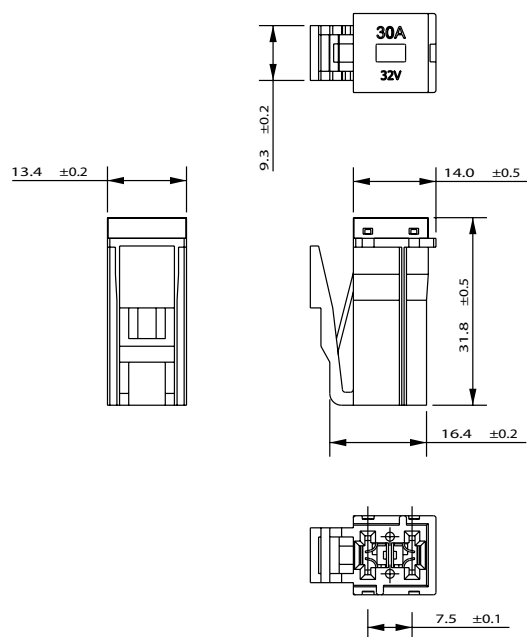
### Ratings

Part Number	Current Rating (A)	Body Color
0293525._	25	LIGHT BROWN
0293530._	30	LIGHT GREEN
0293545._	45	RED
0293565._	65	BLACK
0293575._	75	GRAY

(Average Initial Measurements)

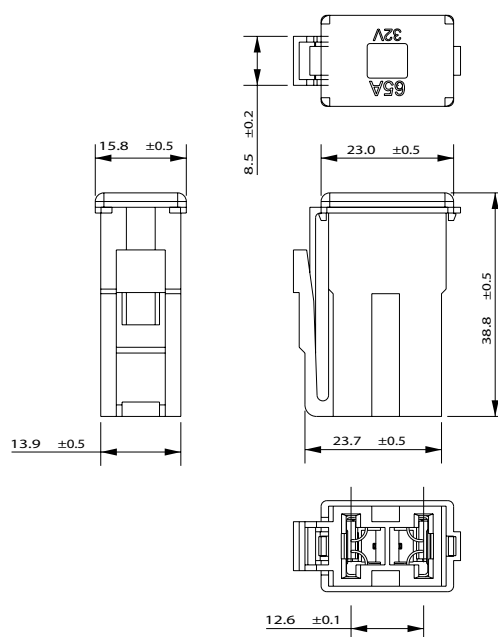
### Dimensions (25A - 30A)

Dimensions in mm



### Dimensions (45A - 75A)

Dimensions in mm



# PAL Fuses - 2935 Series

Rated 32 V DC

## Time-Current Characteristics

% of Rating	Opening Time Min / Max (s)	
	25A - 30A	45A - 75A
110	- /	14,400
150	- /	100
200	5 / 70	2 / 60
300	- / 6	- / 5
600	- / 3	- / 2