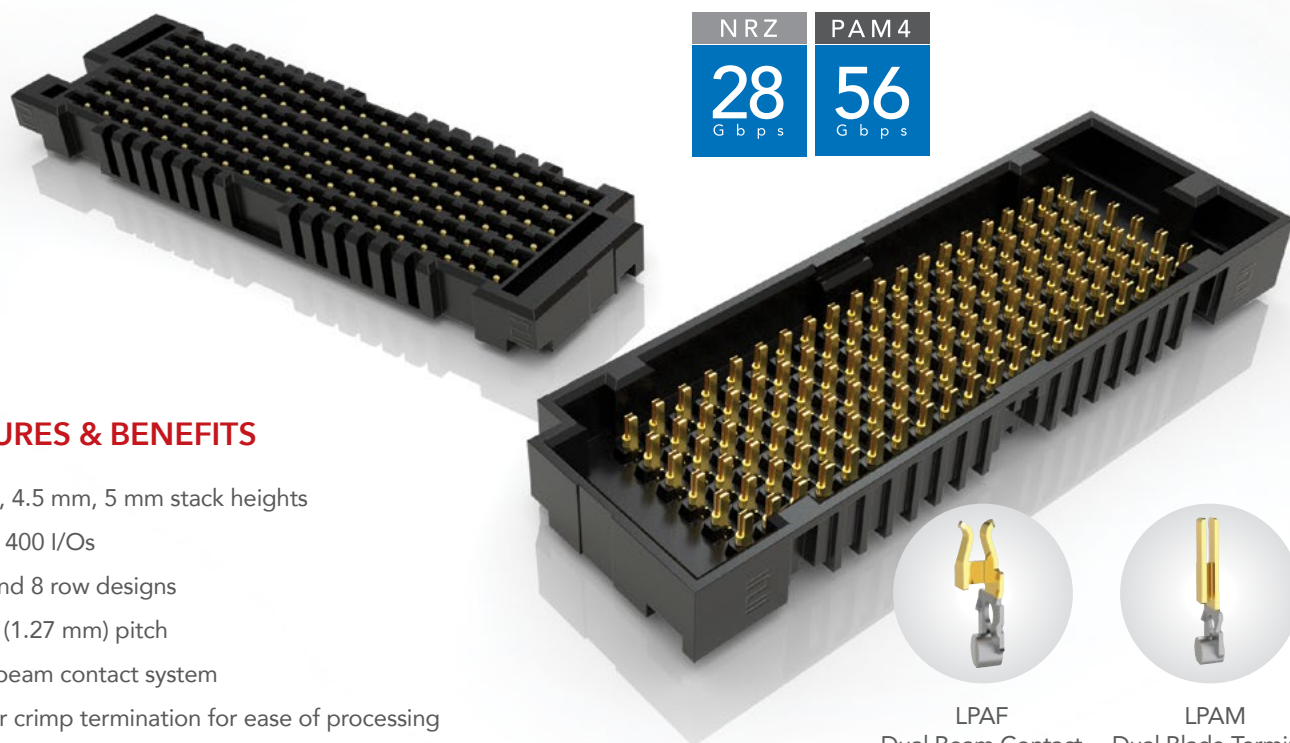




# LOW PROFILE OPEN-PIN-FIELD ARRAYS

(1.27 mm) .050" PITCH



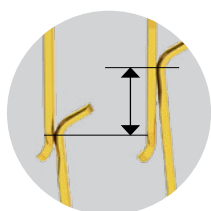
NRZ	PAM4
28 Gbps	56 Gbps

## FEATURES & BENEFITS

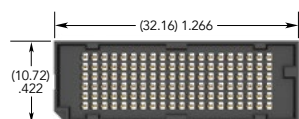
- 4 mm, 4.5 mm, 5 mm stack heights
- Up to 400 I/Os
- 4, 6 and 8 row designs
- .050" (1.27 mm) pitch
- Dual beam contact system
- Solder crimp termination for ease of processing
- Board stacking standoffs available to assist with unmating and reduce risk for component damage on board

LPAF  
Dual Beam Contact

LPAM  
Dual Blade Terminal

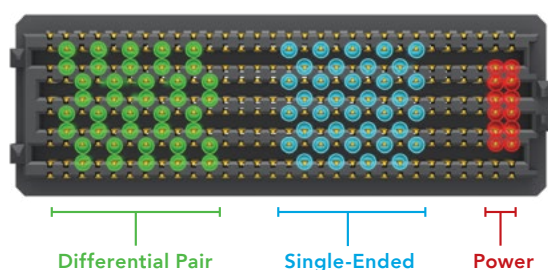


(0.51 mm) .020"  
Nominal Wipe



LPAM Series; 120 pins

## MAXIMUM GROUNDING & ROUTING FLEXIBILITY



## KEY SPECIFICATIONS (LPAM/LPAF)

PITCH	TOTAL PINS	INSULATOR MATERIAL	CONTACT MATERIAL	PLATING	CURRENT RATING	WORKING VOLTAGE	LEAD-FREE SOLDERABLE
1.27 mm x 1.27 mm	Up to 400 I/Os	Black LCP	Copper Alloy	Au or Sn over 50 $\mu$ " (1.27 $\mu$ m) Ni	2.2 A per pin (8 adjacent pins powered)	250 VAC	YES

# (1.27 mm) .050" PITCH • LOW PROFILE OPEN-PIN-FIELD ARRAYS

SERIES	NO. PINS PER ROW	LEAD STYLE	PLATING OPTION	NO. OF ROWS	SOLDER TYPE	K	"X"R
LPAM Terminal	-10, -20, -30, -40,	-01.0 = (1.0 mm) .039" (LPAM only)	-L = 10 μ" (0.25 μm) Gold on contact area, Matte Tin on solder tail	-04 -06 -08	-1 = Tin/Lead Alloy Solder Crimp	-K = Polyimide film Pick & Place Pad	
LPAF Socket	-50 (-08 rows only)	-01.5 = (1.5 mm) .060" (LPAM only)	-S = 30 μ" (0.76 μm) Gold on contact area, Matte Tin on solder tail		-2 = Lead-Free Solder Crimp	-TR = Tape & Reel	-FR = Full Reel Tape & Reel (must order max. quantity per reel; contact Samtec for quantity breaks)
		-03.0 = (3.0 mm) .118" (LPAF only)					
		-03.5 = (3.5 mm) .138" (LPAF only)					

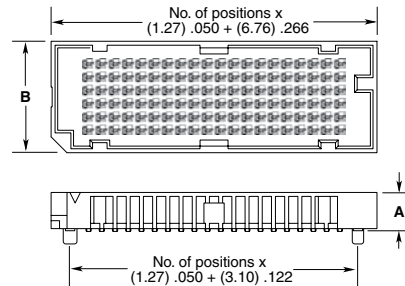
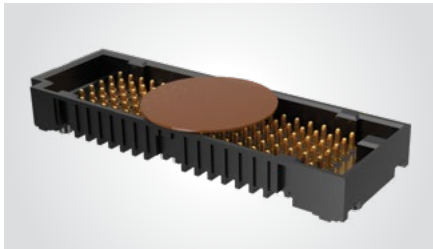
## LPAM

Board Mates:

LPAF

Standoffs:

JSO, SO



NO. OF ROWS	B
-04	(8.18) .322
-06	(10.72) .422
-08	(13.26) .522

LEAD STYLE	A
-01.0	(3.68) .145
-01.5	(4.19) .165

View complete specifications at: [samtec.com?LPAM](http://samtec.com?LPAM)

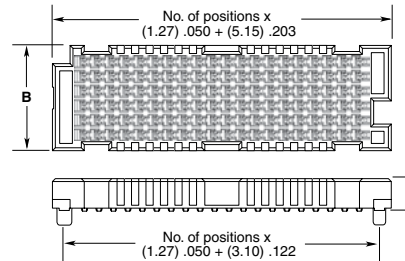
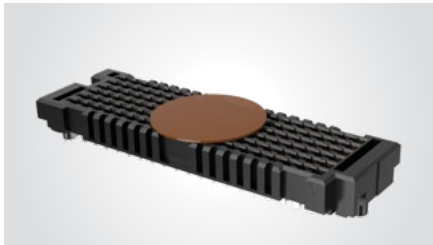
## LPAF

Board Mates:

LPAM

Standoffs:

JSO, SO



NO. OF ROWS	B
-04	(6.71) .264
-06	(9.25) .364
-08	(11.79) .464

LEAD STYLE	A
-03.0	(2.79) .110
-03.5	(3.30) .130

## MATED HEIGHTS\*

LPAM LEAD STYLE	LPAF LEAD STYLE	
	-03.0	-03.5
-01.0	(4.00) .157	(4.50) .177
-01.5	(4.50) .177	(5.00) .197

\*Processing conditions will affect mated height.

## Notes:

Some sizes, styles and options are non-standard, non-returnable

View complete specifications at: [samtec.com?LPAM](http://samtec.com?LPAM)