

Actuator

14-
572.0360



<https://eao.com/p/14-572.0360>

Your product:



14-572.0360

Actuator

FRONT

Front bezel colour:	Nature
Front bezel material:	Aluminium

OPERATING-/INDICATION PART

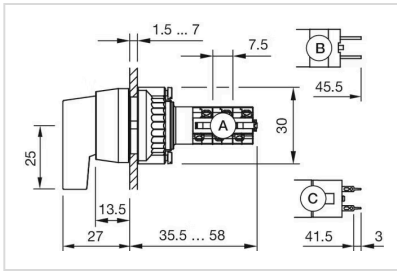
Lever shape:	long
Lever material:	plastic
Lever colour:	Black

ELECTRICAL CHARACTERISTICS

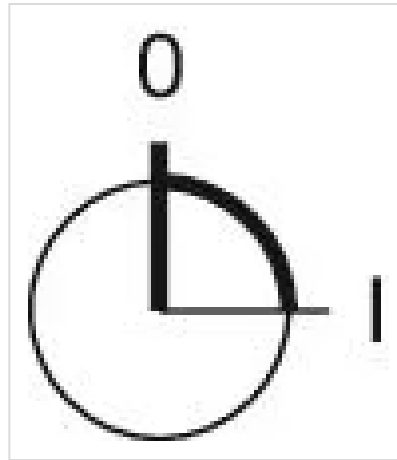
Switching voltage and switching current:	100 mA at 42 VAC/VDC
Protection class:	II
Contacts:	1 NC / 1 NO
Electric strength:	3000 VAC, 50 Hz, 1 min. between all terminals and earth, according to EN/IEC 61058-1

MECHANICAL CHARACTERISTIC

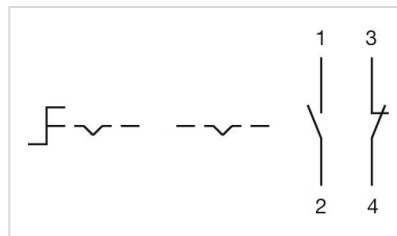
Wire cross section:	Max. wire diameter 2 wires of 1 mm Max. wire cross-section of stranded cable 2 x 0.75 mm ²
Switching system:	<p>This low-level switching element was designed for switching low powers in electronic circuits. The mechanism assures reliable switching of loads ranging from a few μA/μV up to 100 mA/ 42 VAC/DC.</p> <p>Single-break momentary contact, as normally open or normally closed with 4 independent points of contact. 2 momentary contacts per switching element; combination of normally open and normally closed is possible.</p> <p>Special features are the long life, extremely short rebound time and stable contact resistance.</p>
Weight:	0.025 kg



Switching positions:



Wiring diagrams:



Mounting cut-outs:

