

DO NOT
SCALE FROM
THIS PRINT

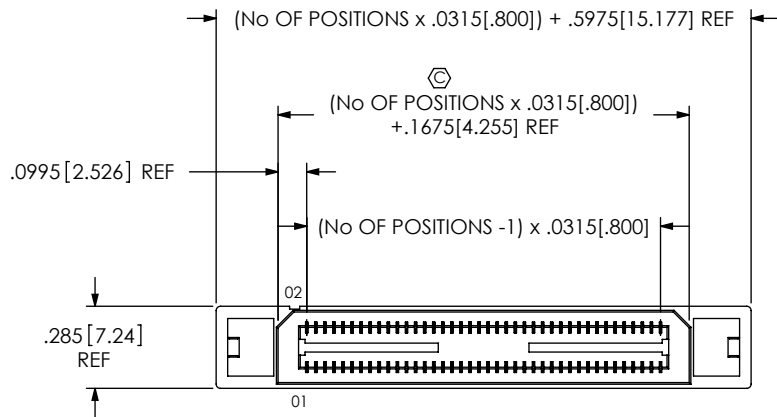
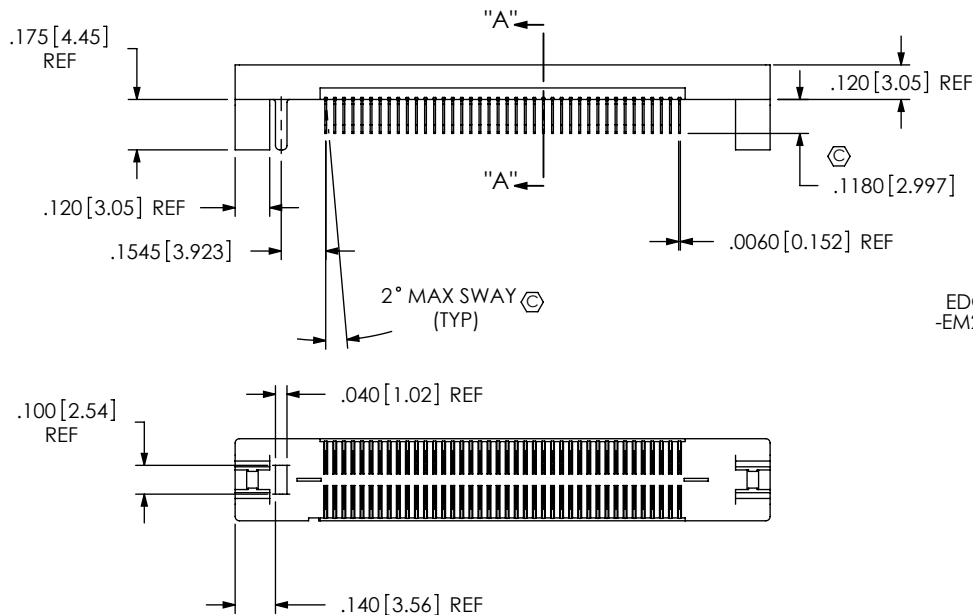


FIG. 1
BSE-040-01-X-D-EM2 SHOWN



BSE-XXX-01-X-D-EMX-XX

No OF POSITIONS (PER ROW)
-020, -040, -060
**-080, **-100, **-120

LEAD STYLE
-01

PLATING SPECIFICATION
-L: LIGHT SELECTIVE GOLD WITH MATTE TIN TAILS (USE C-162-XX-L)
-F: FLASH SELECTIVE GOLD WITH MATTE TIN TAILS (USE C-162-XX-F)
-H: HEAVY GOLD (USE C-162-XX-H)

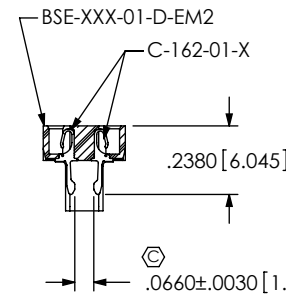
OPTION
-GP: GUIDE POST (60 POS MAX) (USE BSE-XXX-01-EM2-GP) [SEE SHEET 2, FIG. 2 - AVAILABLE ONLY ON -EM2]

EDGE MOUNT THICKNESS
-EM2: .064[1.63] ±.004 PCB (USE BSE-XXX-01-D-EM2 & C-162-01-X)
-EM3: (USE BSE-XXX-01-D-EM3 & C-162-02-X)

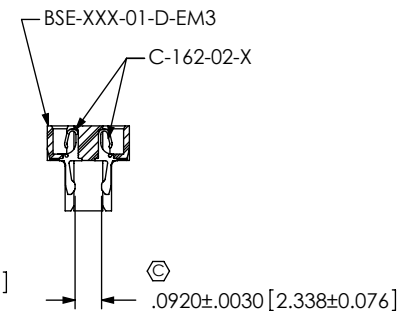
SEE NOTE 6

ROW SPECIFICATION
-D: DOUBLE (USE BSE-XXX-01-D-EMX)

**SEE NOTE 7



SECTION "A-A"
EDGE MOUNT THICKNESS
-EM2: .064[1.63] ±.004 PCB

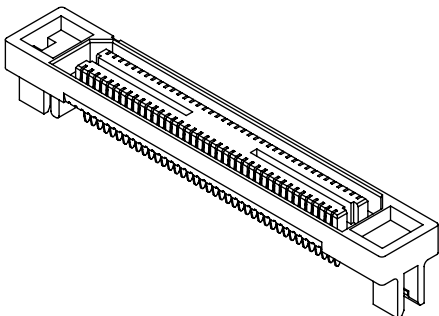


SECTION "A-A"
EDGE MOUNT THICKNESS
-EM3:
SEE NOTE 6

(DIFFERENT AS SHOWN, OTHERWISE SAME AS -EM2 PCB THICKNESS)

NOTES:

1. Ⓢ REPRESENTS A CRITICAL DIMENSION.
2. CONTACT RETENTION: 4 OZ MIN.
3. DELETED.
4. PARTS ARE "MOLD TO POSITION".
5. MAX VARIANCE OF .002.
6. -EM3 IS NOT A STANDARD OFFERING; AVAILABLE AS AN ASP ONLY. PLEASE CONTACT SAMTEC INTERCONNECT PROCESSING GROUP WITH ORDER INQUIRIES.
7. FOR NEWAPPLICATIONS REQUIRING THESE POSITIONS PLEASE CONTACT SAMTEC INTERCONNECT PROCESSING GROUP.



UNLESS OTHERWISE SPECIFIED,
DIMENSIONS ARE IN INCHES.
TOLERANCES ARE:
DECIMALS ANGLES
.XX: ±.01[.3] 2°
.XXX: ±.005[.13]
.XXXX: ±.0020[.051]

PROPRIETARY NOTE
THIS DOCUMENT CONTAINS INFORMATION
CONFIDENTIAL AND PROPRIETARY TO
SAMTEC, INC. AND SHALL NOT BE REPRODUCED
OR TRANSFERRED TO OTHER DOCUMENTS OR
DISCLOSED TO OTHERS OR USED FOR ANY
PURPOSE OTHER THAN THAT WHICH IT WAS
OBTAINED WITHOUT THE EXPRESSED WRITTEN
CONSENT OF SAMTEC, INC.

samtec

520 PARK EAST BLVD, NEW ALBANY, IN 47150
PHONE: 812-944-6733 FAX: 812-948-5047
e-Mail: info@SAMTEC.com code: 55322

MATERIAL: DO NOT SCALE DRAWING
INSULATOR: VECTRA E130i; COLOR: BLACK
CONTACT: PHOS BRONZE, 510 SPRING TEMPER
THICKNESS: .0060

SHEET SCALE: 1.5:1

DESCRIPTION:
.8mm EDGE MOUNT MI SOCKET ASSEMBLY

DWG. NO.
BSE-XXX-01-X-D-EMX-XX

BY: DEAN P 5/25/2000 SHEET 1 OF 2

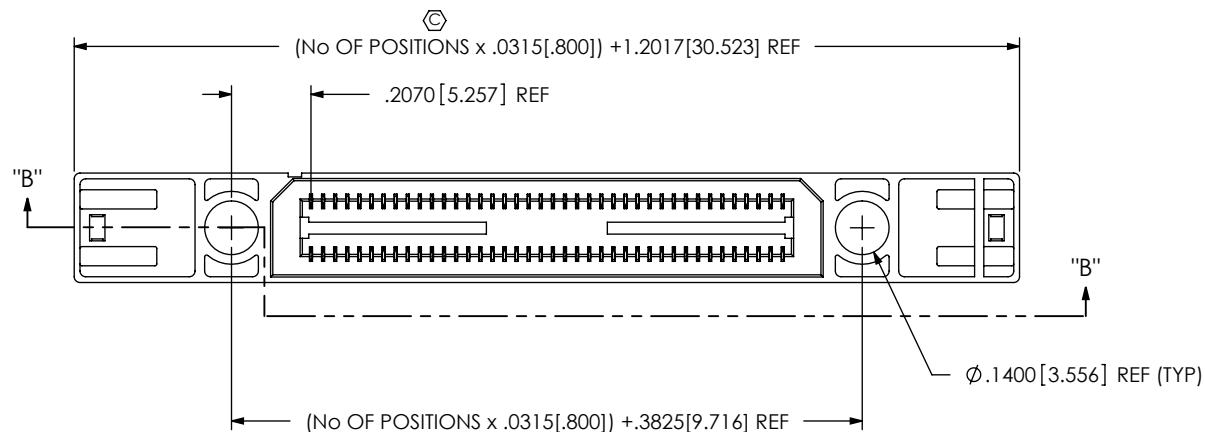
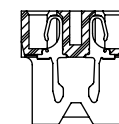
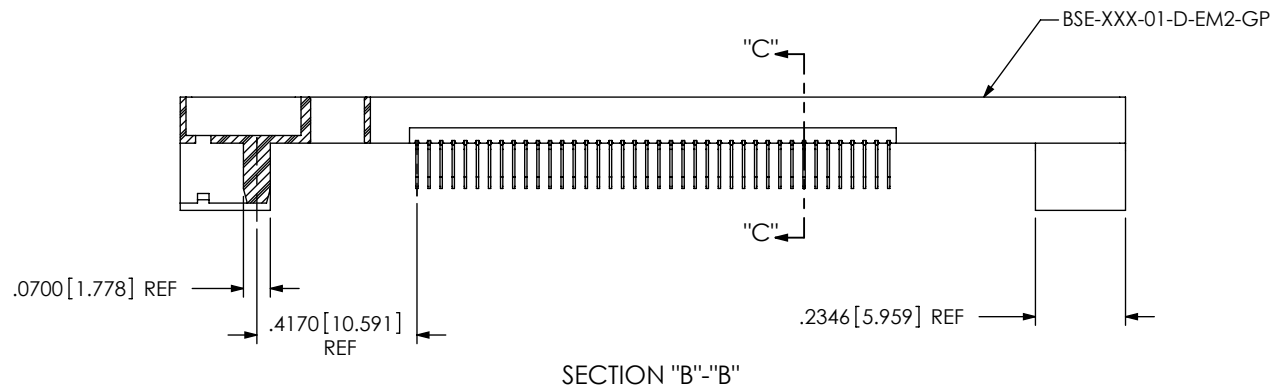
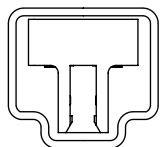


FIG. 2
 -GP: GUIDE POST
 BSE-040-01-X-D-EM2-GP SHOWN
 (60 POSITION MAX)
 [DIFFERENT AS SHOWN, OTHERWISE
 SAME AS FIG. 1]



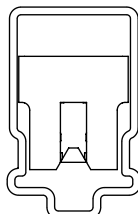
SECTION "C"-"C"

PACKAGING VIEW



-EMX

TUBE: PT-1-24-02-38
 PLUG: TP-03



-EMX-GP

TUBE: PT-1-24-01-86
 PLUG: TP-07

PROPRIETARY NOTE

THIS DOCUMENT CONTAINS INFORMATION
 CONFIDENTIAL AND PROPRIETARY TO
 SAMTEC, INC. AND SHALL NOT BE REPRODUCED
 OR TRANSFERRED TO OTHER DOCUMENTS OR
 DISCLOSED TO OTHERS OR USED FOR ANY
 PURPOSE OTHER THAN THAT WHICH IT WAS
 OBTAINED WITHOUT THE EXPRESSED WRITTEN
 CONSENT OF SAMTEC, INC.

DO NOT SCALE DRAWING

SHEET SCALE: 2:1

samtec

520 PARK EAST BLVD, NEW ALBANY, IN 47150
 PHONE: 812-944-6733 FAX: 812-948-5047
 e-Mail: info@SAMTEC.com code: 55322

DESCRIPTION:
 .8mm EDGE MOUNT MI SOCKET ASSEMBLY

DWG. NO.
BSE-XXX-01-X-D-EMX-XX

BY: DEAN P 5/25/2000 SHEET 2 OF 2