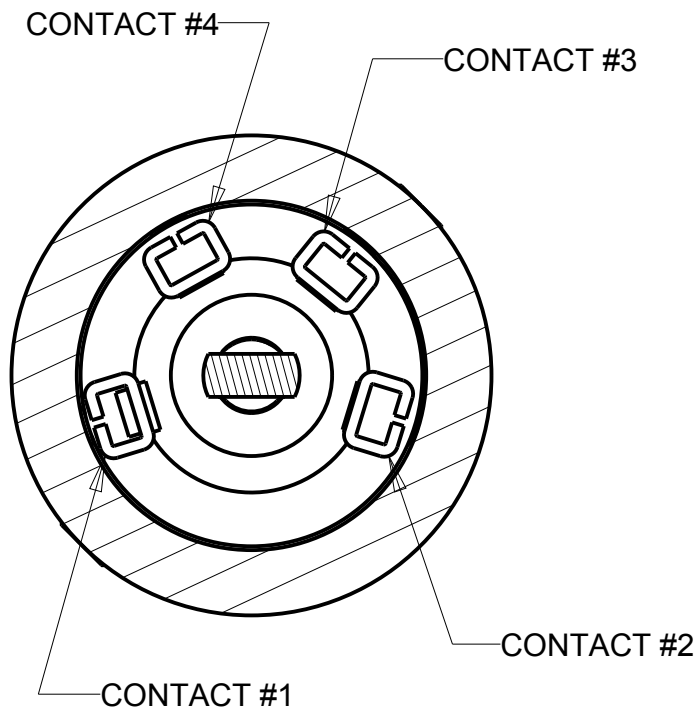
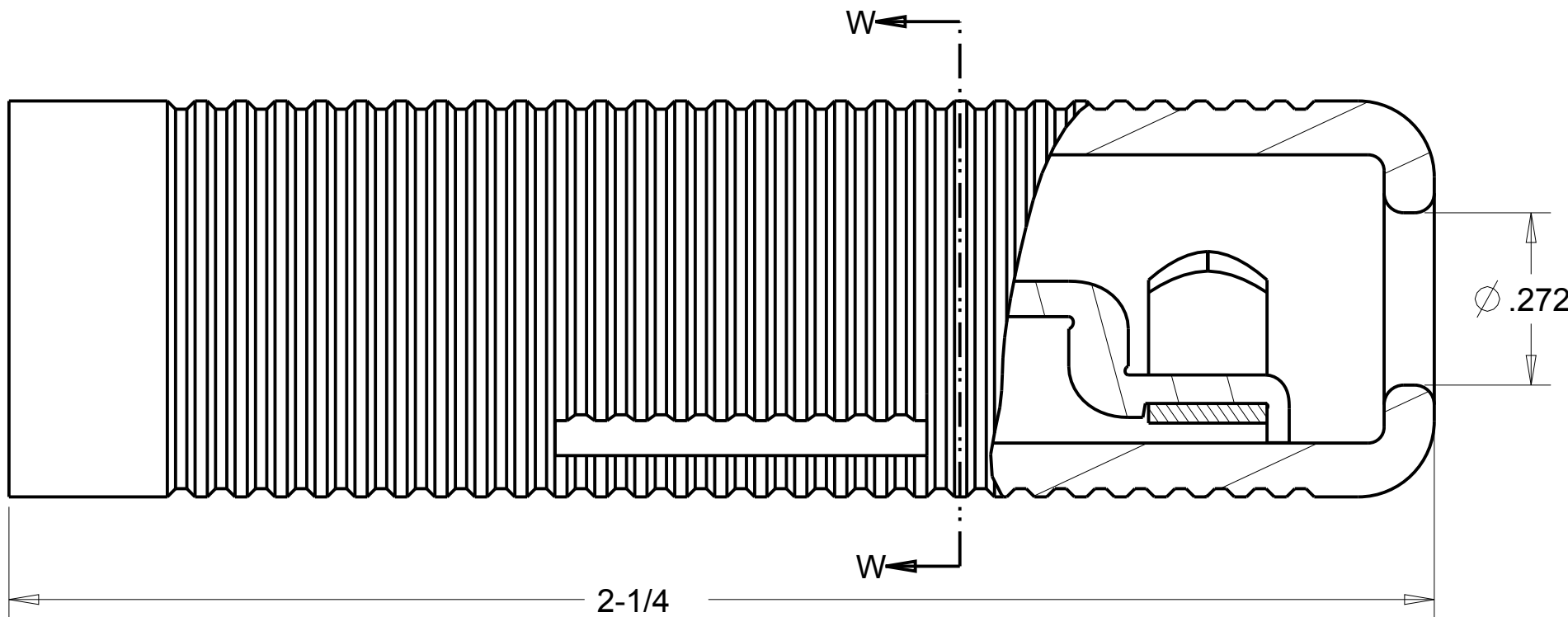
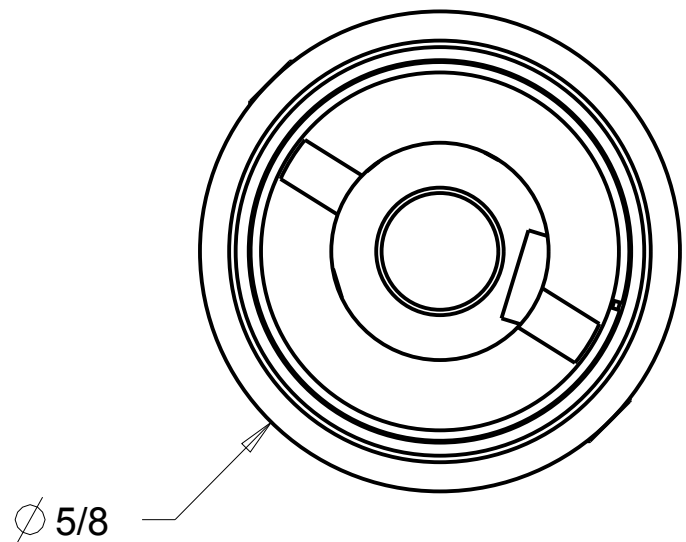
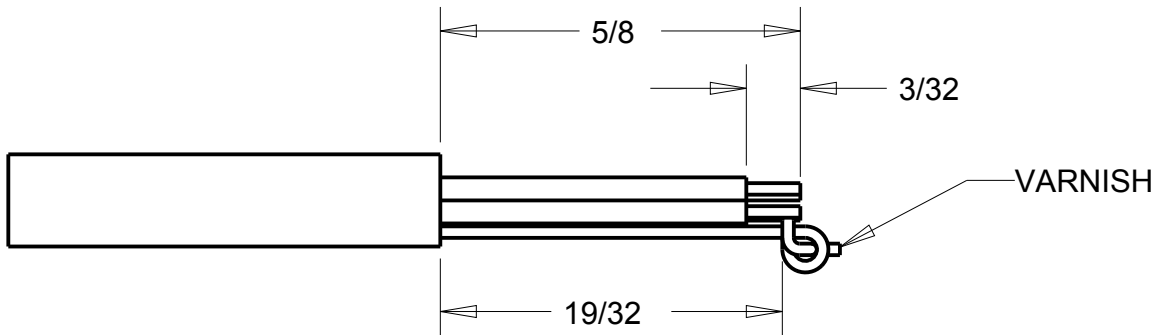
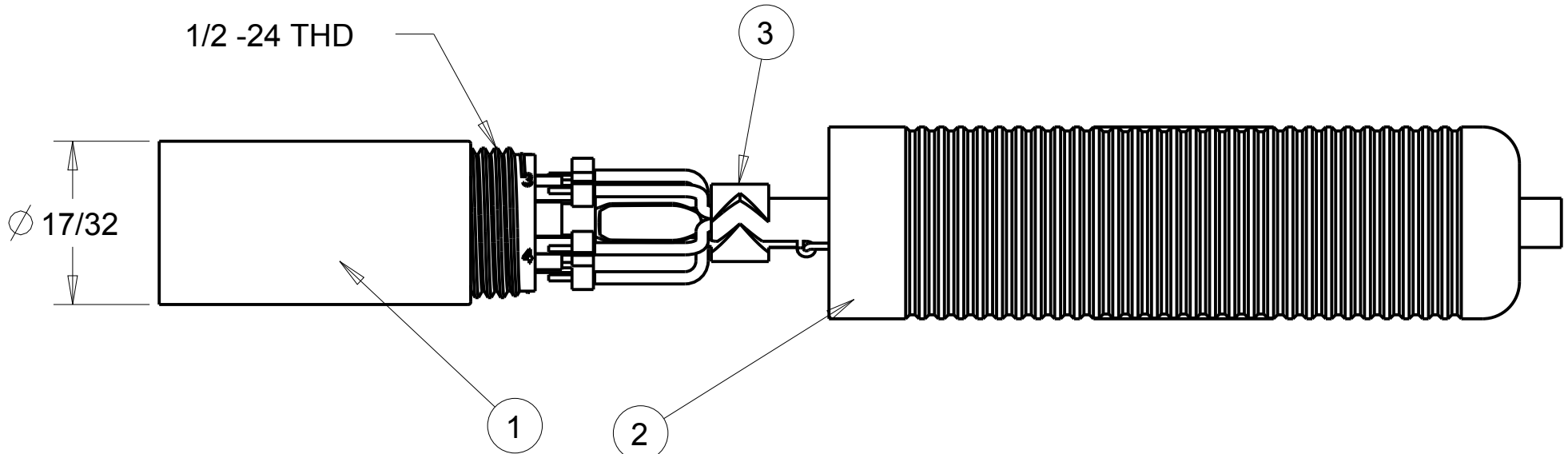


ITEM #	PART #	QTY	DESCRIPTION
1	TJ-101-100S	1	TELEPHONE JACK
2	TJ-101-3	1	SHELL
3	TJ-105-13	1	STRAIN RELIEF CLAMP

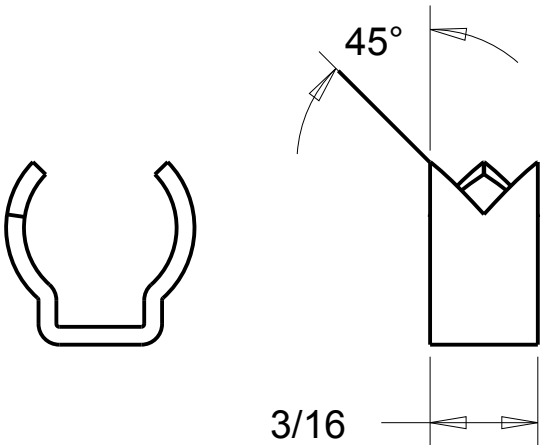
C TJ-101OS-CP



SECTION W-W



SUGGESTED LEAD DRESS



TJ-105-13 STRAIN RELIEF CLAMP  
FOR CABLE WITH Ø .280 MAX OD

- CONDENSED SPECIFICATIONS:
- 1) THIS JACK MATES WITH NEXUS TELEPHONE PLUG TP-101 WITH A MAX INSERTION FORCE OF 10 LBS & WITHDRAWL FORCE OF 6 LBS MIN TO 10 LBS MAX
  - 2) THE STRAIN RELIEF CLAMP IS INTENDED FOR USE WITH CABLES APPROX Ø .275 OUTSIDE DIA.
  - 3) THE SOLDER TERMINALS WILL ACCEPT TWO STRANDED CONDUCTORS OF 404 CIRCULAR MILS (24 GAGE, 41 STRANDS OF 40 AWG)
  - 4) EACH CONDUCTOR IS OF ONE PIECE CONSTRUCTION. THERE ARE NO JOINTS OF ANY TYPE BETWEEN THE CONTACT AREA & THE SOLDER TERMINAL.
  - 5) THE STAY CORD ANCHOR WILL WITHSTAND A 50 LB PULL FOR AT LEAST 5 MIN.
  - 6) MATERIALS:
    - A) CONTACTS- BREYLLIUM COPPER PER FEDERAL SPEC QQ-C-533. FINISH NICKEL PLATER PER FEDERAL SPEC QQ-N-290, CLASS 2, TYPE 6.
    - B) BODY INSULATION
    - C) STRAIN RELIEF CLAMP; STAINLESS STEEL PER FEDERAL SPEC QQ-5-766, CLASS 4
    - D) SHELL: GLASS FILLED NYLON, BLACK
  - 7) ELECTRICAL:
    - A) DIELECTRIC STRENGTH: 500 VOLTS RMS MIN BETWEEN ANY PAIR OF CONTACTS.
    - B) INSULATION RESISTANCE: 100 MEGAOHMS MIN BETWEEN ANY PAIR OF CONTACTS.
    - C) CONTACT RESISTANCE: WHEN MATED WITH NEXUS TP-101 TELEPHONE PLUG & WITH A DIRECT CURRENT OF 100 MILLIAMPERES AT 5 VOLTS (OPEN CIRCUIT VOLTAGE) FLOWING THROUGH THE CONTACTS, THE POTENTIAL DROP BETWEEN EACH PAIR OF CONTACTSWILL NOT EXCEED .005 VOLTS.

ORDER PART NUMBER TJ-101OS

THIS DOCUMENT CONTAINS PROPRIETARY INFORMATION OF NEXUS, INCORPORATED AND SUCH INFORMATION MAY NOT BE DISCLOSED TO OTHERS FOR ANY PURPOSE OR USED FOR ANY PURPOSE WITHOUT THE WRITTEN CONSENT OF NEXUS.

						DWN.BY HR	DATE 4-8-13	MATERIAL			
						CHECKED BY	DATE	FINISH			
						APPR.BY	DATE	WEIGHT		SCALE = 4.00 :1	
						UNLESS OTHERWISE SPECIFIED DIMENSIONS ARE IN INCHES & OR [mm] TOLERANCES: DECIMAL: ±.XX(X.X) ±.XXX(X.XX) ±.XXXX(X.XXX) ±.01(0.3) ±.003(0.08) ±.0005(0.013)		TITLE  TELEPHONE JACK		NEXUS STAMFORD,CONN	
A	NEW RELEASE	159	4/8 2013	HR							
LET.	REVISION	CN #	DATE	CHK		FRACTION: ±X/XX ± 1/64		ANGLES: ± X ° ±.5 °		SIZE C	DWG. NO. TJ-101OS-CP
						DO NOT SCALE DWG.		SHEET 1 OF 1			

NEXUS  
STAMFORD, CONN