

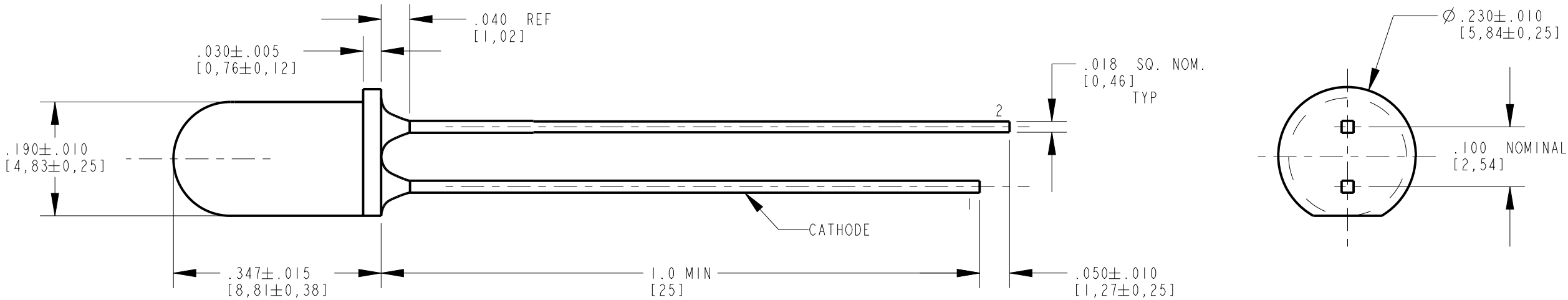
DIALIGHT PART NUMBER	LED & LENS COLOR
521-9251F	GREEN

Note: Part Number in Tape and Reel Packaging
is 521-9603F

RoHS COMPLIANT 521-9251F

Part Numbers with the "F" suffix ending are RoHS Compliant.
Packaging is marked with "RoHS Compliant" label or equivalent
markings. Parts can be wave soldered, dip soldered or hand
soldered using typical lead-free soldering process with max
260°C temp. for 5 sec.

REV	ECN NO	REVISIONS	DRN	CKD	APP	DATE
A	—	NEW RELEASE	KLJ	N.O.	MES	10-31-08
B	—	"TINTED" EPOXY PACKAGE WAS "WATER CLEAR" IN ERROR.	KLJ	N.O.	MES	11-15-09
C	—	REMOVED 5219247F	WFB	JTD	N.O.	6-3-14



OPERATING CHARACTERISTICS AT 25°C AMBIENT						
LED COLOR	LUMINOUS INTENSITY @I _F = 10 mA (mcd)		FORWARD VOLTAGE @I _F = 10 mA (V)		PEAK WAVELENGTH (nm)	VIEWING ANGLE (DEG)
	MIN	TYP	TYP	MAX	TYP	TYP
GREEN	25	70	2.3	3.0	565	24



ATTENTION:
OBSERVE PRECAUTIONS FOR
HANDLING ELECTROSTATIC
SENSITIVE DEVICES

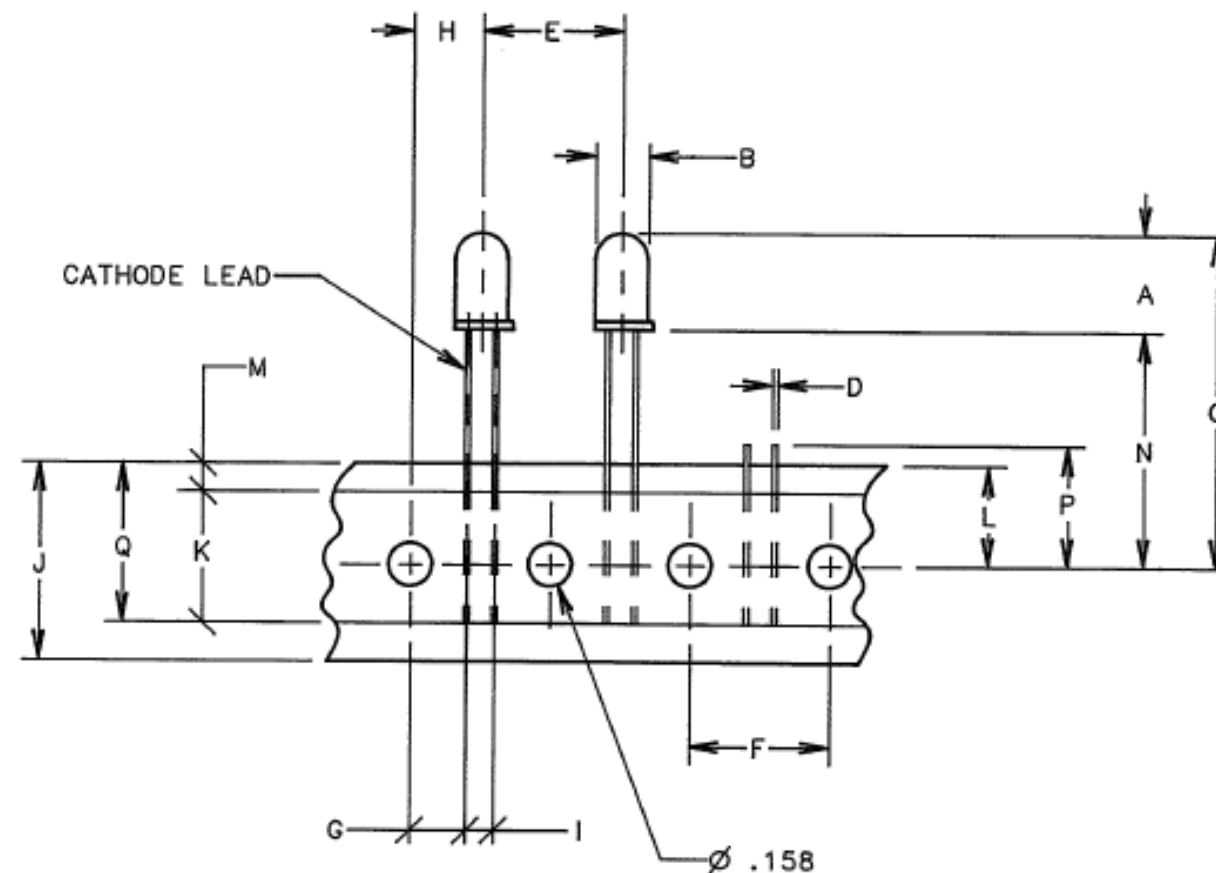
ABSOLUTE MAXIMUM RATINGS AT 25°C AMBIENT	GREEN	UNITS
POWER DISSIPATION	135	mW
DC CURRENT	30	mA
PEAK OPERATING FORWARD CURRENT	90	mA
PEAK TRANSIENT FORWARD CURRENT (10μs PULSE WIDTH)	500	mA
DERATE LINEARLY FROM 25°C	0.4	mA/°C
REVERSE VOLTAGE (I _R =100 μA)	5	V
STORAGE TEMPERATURE	-55 TO +100	°C
OPERATING TEMPERATURE	-20 TO +100	°C
SOLDERING TEMPERATURE, 1/16" FROM BODY FOR 5 SEC	260	°C

NOTES:

- LENS COLOR: TINTED, NON-DIFFUSED
- LEAD SPACING MEASURED NEAR EPOXY PACKAGE.
- PIN NUMBERS FOR REFERENCE ONLY, DESIGNATION NON-EXISTENT ON PART.
- DIALIGHT PART NUMBER:521-9251F.
- THIS ASSEMBLY CONTAINS ELECTROSTATIC DISCHARGE SENSITIVE DEVICES (ESDS). MAINTAIN ALL PRECAUTIONARY MEASURES DURING ASSEMBLY, HANDLING, AND STORAGE IN ACCORDANCE WITH IPC-A-610.

THIS DRAWING AND THE CONTENTS HEREIN ARE CONFIDENTIAL AND THE SOLE PROPERTY OF DIALIGHT. REPRODUCTION OF THIS DRAWING OR CONSTRUCTION OF ANY PARTS WITHIN THIS DRAWING ARE FORBIDDEN WITHOUT THE WRITTEN CONSENT OF DIALIGHT.		
SCALE: 3.000	DRAWING NUMBER C-17674	REV C
ALL DIM'S IN: INCHES (MM)		
TOLERANCES: UNLESS OTHERWISE SPECIFIED	TITLE Ø5mm TINTED, NON-DIFFUSED LED RoHS COMPLIANT	
FRACTIONS: ±1/64 DECIMALS (.XX): ±.01 DECIMALS (.XXX): ±.005 DECIMALS (.XXXX): ±.0005 ANGLES: ±1°		
FINISH:	MATERIAL	
FSCM 83330	Dialight 1501 ROUTE 34 SOUTH FARMINGDALE, NJ 07727	
SHEET 1 OF 1 FAMILY TABLE:		

ITEM	SYMBOL	DIMENSION
BODY HEIGHT	A	0.347 (REF)
BODY DIAMETER	B	0.185 (REF)
COMPONENT HEIGHT	C	1.189 (MAX)
LEAD WIRE THICKNESS	D	0.018 (REF)
PITCH OF COMPONENT	E	$\frac{0.539}{0.461}$
FEED HOLE PITCH	F	$\frac{0.508}{0.492}$
FEED HOLE CENTER TO LEAD CENTER	G	$\frac{0.179}{0.124}$
HOLE CENTER TO COMPONENT CENTER	H	$\frac{0.289}{0.211}$
LEAD TO LEAD DISTANCE	I	$\frac{0.213}{0.193}$
TAPE WIDTH	J	$\frac{0.728}{0.689}$
HOLD DOWN TAPE WIDTH	K	$\frac{0.602}{0.579}$
HOLE POSITION	L	$\frac{0.384}{0.335}$
HOLD DOWN TAPE POSITION	M	0.100 (MAX)
HEIGHT OF COMPONENT FROM HOLE CENTER	N	$\frac{0.827}{0.787}$
FEED HOLE DIAMETER	O	$\frac{0.165}{0.150}$
LENGTH OF SNIPPED LEAD	P	0.433 (MAX)
LEAD LENGTH UNDER HOLD DOWN TAPE	Q	0.571 (MIN)
COMPONENT ALIGNMENT, FRONT-REAR	—	0 ± 0.039
TOTAL TAPE THICKNESS	—	$\frac{0.035}{0.020}$


NOTES:

1. LEDs TO BE PACKAGED ON TAPE AND REEL AS SHOWN ON DRAWING, 0.100 INCH STRAIGHT LEADS, 1300 PCS/REEL.
2. LED REFERENCE ELECTRICAL AND OPTICAL SPECS: 521-9251F