

# REVISION Z

DO NOT  
SCALE FROM  
THIS PRINT

TABLE 2		
No. OF POS	"C"	"D"
-016	.838 [21.27]	.788 [20.00]
-032	1.625 [41.28]	1.575 [40.01]
-048	2.413 [61.28]	2.363 [60.01]
*-064	3.200 [81.28]	3.150 [80.01]
*-080	3.988 [101.28]	3.938 [100.01]

\* = SEE NOTES 10, 11 & 13

## ASO ONLY (APPLICATION SPECIFIC ORDER)

TABLE 1	
No OF POSITIONS	COPLANARITY (INCLUDES GND PLANE)
-016 THRU -032	.004[0.10]
-048, *-064, *-080	.006[0.15]

\* = SEE NOTES 10, 11 & 13

## QSS-XXX-XX-XXX-D-DP-XXX

### No OF POSITIONS

-016, -032, -048,  
\*-064, \*-080  
(PER ROW)

\* SEE NOTES 10, 11 & 13

### LEAD STYLE

-01: .1430[3.632]

### PLATING SPECIFICATION

(SEE NOTES 7 & 9)

-F: 3µ" FLASH SELECTIVE GOLD IN CONTACT AREA, MATTE TIN ON TAIL (USE C-126-21-F & T-1G2-01-F) (SEE NOTE 7)

-L: 10µ" LIGHT SELECTIVE GOLD, IN CONTACT AREA, MATTE TIN ON TAIL (USE C-126-21-L & T-1G2-01-L)

-H: 30µ" HEAVY GOLD IN CONTACT AREA, 3µ" GOLD ON TAIL (USE C-126-21-H & T-1G2-01-G)

-STL: 30µ" HEAVY SELECTIVE GOLD IN CONTACT AREA, TIN LEAD ON TAIL (USE C-126-21-STL & T-1G2-01-STL)

-FTL: 3µ" FLASH SELECTIVE GOLD IN CONTACT AREA, TIN LEAD ON TAIL (USE C-126-21-FTL & T-1G2-01-FTL)

### OPTION

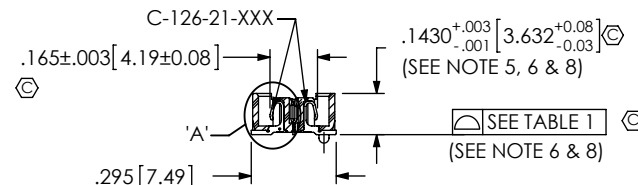
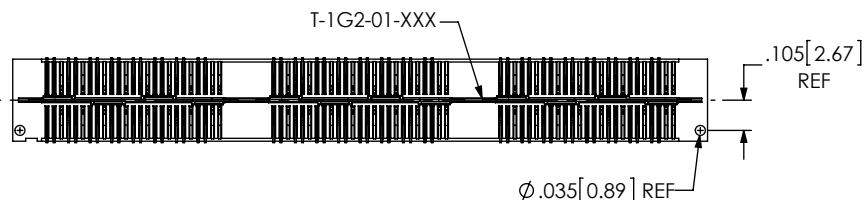
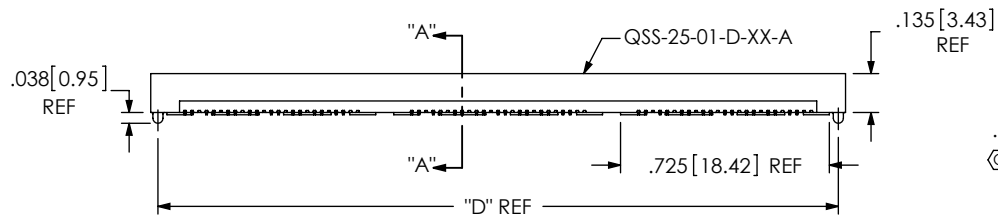
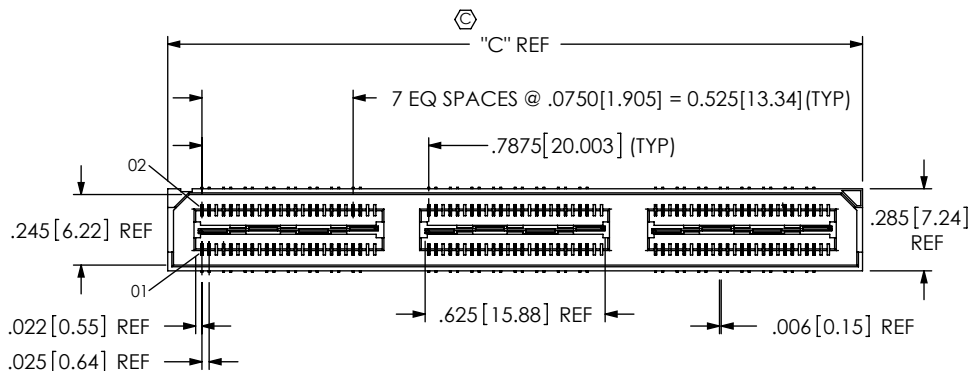
- A: ALIGNMENT PINS (USE QSS-25-01-D-XX-A) (NOT AVAILABLE WITH -LC)
- LC: LOCKING CLIPS (SEE NOTE 12) (USE LC-08-TM-01) (SEE FIG 2, SHT 2) (NOT AVAILABLE WITH -A)
- K: POLYIMIDE FILM PAD (USE K-850-650) (SEE FIG 3, SHT 2)
- TR: TAPE & REEL (48 POS MAX) (32 POS MAX FOR -GP OPTION)
- GP: GUIDE POSTS (USE QSS-25-01-D-XX-X-GP) (SEE FIG 4, SHT 3) (NOT AVAILABLE WITH -LS2)
- LS2: LOCKING SCREW (USE QSS-25-01-D-XX-LS2) (SEE FIG 5, SHT 3) (NOT AVAILABLE WITH -GP) (FOR MATING WITH QTS-...-RA-LS2)

### DIFFERENTIAL PAIRS

### ROW SPECIFICATION

-D: DOUBLE (USE QSS-25-XX-D-XX)

### No OF BANKS



### SECTION "A"-"A"

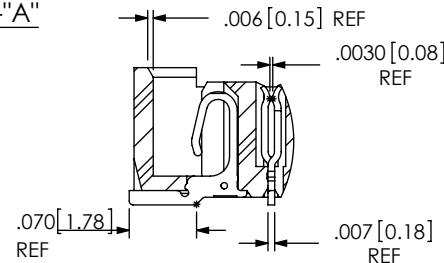


FIG 1

-A: ALIGNMENT PIN OPTION  
(QSS-048-01-XXX-D-DP-A SHOWN)

DETAIL 'A'  
SCALE 5:1

### NOTES:

1. MINIMUM CONTACT RETENTION: 5 OZ
2. MINIMUM GROUND PLANE RETENTION: 8 OZ
3. Ⓢ REPRESENTS A CRITICAL DIMENSION.
4. PARTS ARE MOLD TO POSITION.
5. MAX VARIANCE: .002[0.05].
6. DIMENSION APPLIES TO CONTACTS AND GROUND PLANES, INDEPENDENT OF EACH OTHER.
7. -L PLATING CAN BE SUBSTITUTED FOR -F PLATING.
8. GROUND PLANE PRESS HEIGHT MUST BE .003[.08] LESS THAN THE MAXIMUM HEIGHT OR .001[0.03] GREATER THAN THE MINIMUM HEIGHT OF THE SIGNAL PIN.
9. MAY SUBSTITUTE C-126-01-XXX FOR C-126-21-XXX.
10. FOR NEW APPLICATIONS REQUIRING THESE POSITIONS, PLEASE CONTACT SAMTEC INTERCONNECT PROCESSING GROUP.
11. FOR -064 AND -080 POSITIONS USE C-269-11-XXX. DO NOT SUB C-126-01-XXX
12. DUE TO THE HIGH AMOUNT OF INSERTION FORCE NEEDED, THE -LC OPTION IS NOT COMPATIBLE WITH AUTO PLACEMENT. SAMTEC RECOMMENDS MANUAL PLACEMENT FOR ALL ASSEMBLIES WITH THE -LC OPTION.
13. AVAILABLE FOR EXISTING CUSTOMERS ONLY.

UNLESS OTHERWISE SPECIFIED,  
DIMENSIONS ARE IN INCHES.

TOLERANCES ARE:

DECIMALS ANGLES  
.XX: ±.01[.3]  
.XXX: ±.005[.13]  
.XXXX: ±.0020[.05]

### PROPRIETARY NOTE

THIS DOCUMENT CONTAINS INFORMATION  
CONFIDENTIAL AND PROPRIETARY TO  
SAMTEC, INC. AND SHALL NOT BE REPRODUCED  
OR TRANSFERRED TO OTHER DOCUMENTS OR  
DISCLOSED TO OTHERS OR USED FOR ANY  
PURPOSE OTHER THAN THAT WHICH IT WAS  
OBTAINED WITHOUT THE EXPRESSED WRITTEN  
CONSENT OF SAMTEC, INC.

MATERIAL: DO NOT SCALE DRAWING SHEET SCALE: 1.5:1

INSULATOR: LCP, UL94V-0; COLOR: BLACK  
CONTACT: PHOS BRONZE  
GROUND PLANE: PHOS BRONZE

F:\DWG\MISC\MKTG\QSS-XXX-XX-XXX-D-DP-XXX-MKT.SLDDRW

DESCRIPTION:

.635mm DIFFERENTIAL PAIRS HS SOCKET ASSEMBLY

DWG. NO.

QSS-XXX-XX-XXX-D-DP-XXX

BY: KEVIN B

07/10/2000

SHEET 1 OF 3

**samtec**

520 PARK EAST BLVD, NEW ALBANY, IN 47150  
PHONE: 812-944-6733 FAX: 812-948-5047  
e-Mail: info@SAMTEC.com code 55322

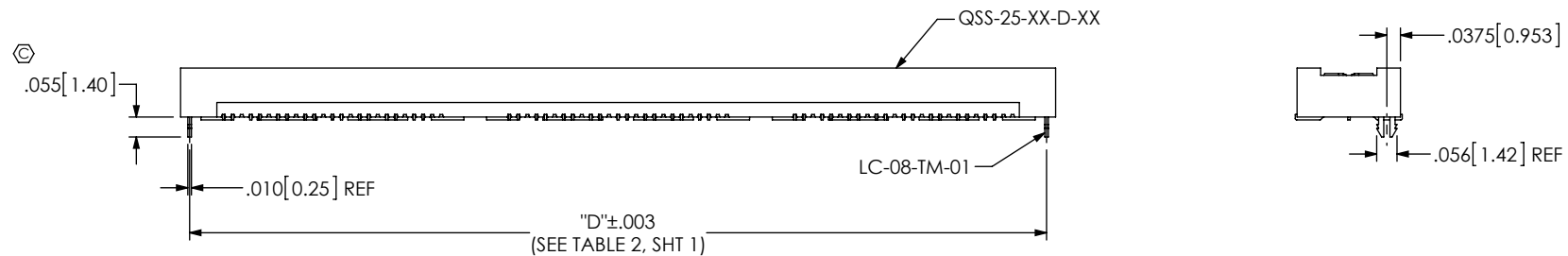


FIG 2  
-LC: LOCKING CLIP OPTION  
(QSS-048-01-XXX-D-DP-LC SHOWN)  
(DIFFERENT AS SHOWN, OTHERWISE SAME AS FIG 1)

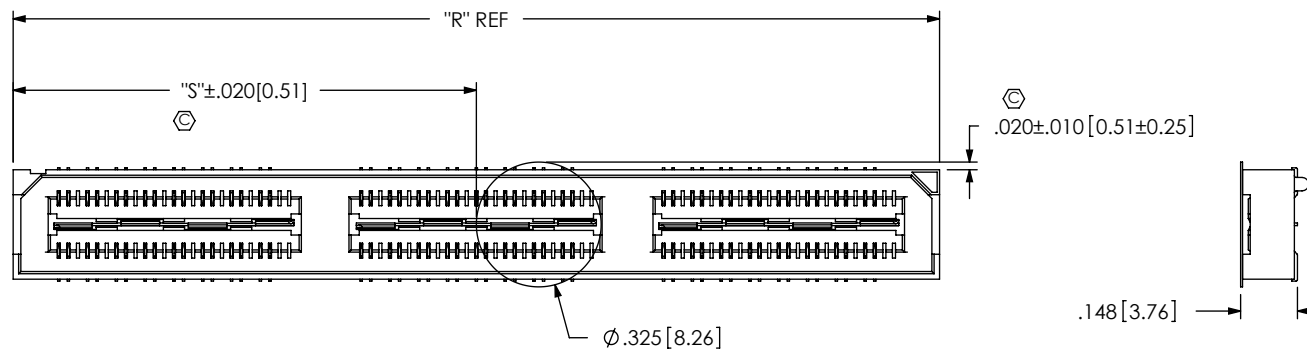


FIG 3  
-K: POLYIMIDE FILM PAD  
(USE K-850-650)

TABLE 3

No OF POS	"R"			"S"		
	-LC, -A	-GP	-LS2	-LC, -A	-GP	-LS2
-016	.838 [21.27]	1.217 [30.90]	1.338 [33.97]	.256 [6.51]	.446 [11.32]	.506 [12.86]
-032	1.625 [41.28]	2.004 [50.90]	2.125 [53.98]	.650 [16.51]	.840 [21.32]	.900 [22.86]
-048	2.413 [61.28]	2.792 [70.90]	2.913 [73.98]	1.044 [26.51]	1.233 [31.32]	1.294 [32.86]
*-064	3.200 [81.28]	3.579 [90.91]	3.700 [93.98]	1.438 [36.51]	1.627 [41.33]	1.688 [42.86]
*-080	3.988 [101.28]	4.367 [110.91]	4.488 [113.98]	1.831 [46.51]	2.021 [51.33]	2.081 [52.86]

\* = SEE NOTES 10, 11 & 13

PROPRIETARY NOTE

THIS DOCUMENT CONTAINS INFORMATION  
CONFIDENTIAL AND PROPRIETARY TO  
SAMTEC, INC. AND SHALL NOT BE REPRODUCED  
OR TRANSFERRED TO OTHER DOCUMENTS OR  
DISCLOSED TO OTHERS OR USED FOR ANY  
PURPOSE OTHER THAN THAT WHICH IT WAS  
OBTAINED WITHOUT THE EXPRESSED WRITTEN  
CONSENT OF SAMTEC, INC.

DO NOT SCALE DRAWING

SHEET SCALE: 2:1

**samtec**

520 PARK EAST BLVD, NEW ALBANY, IN 47150  
PHONE: 812-944-6733 FAX: 812-948-5047  
e-Mail info@SAMTEC.com code 55322

DESCRIPTION:  
.635mm DIFFERENTIAL PAIRS HS SOCKET ASSEMBLY

DWG. NO.  
**QSS-XXX-XX-XXX-D-DP-XXX**

BY: KEVIN B 07/10/2000 SHEET 2 OF 3

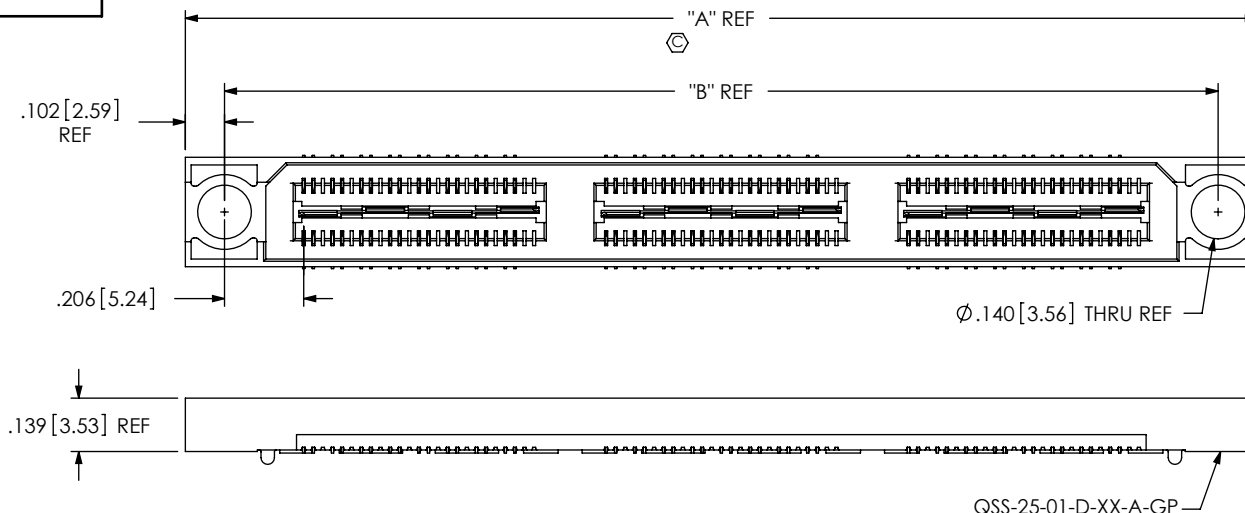


FIG 4  
-GP: GUIDE POST OPTION  
(QSS-048-01-XXX-D-DP-GP SHOWN)  
(DIFFERENT AS SHOWN, OTHERWISE SAME AS FIG 1)  
(32 POS MAX FOR TAPE & REEL OFFERING)

TABLE 4		
POSITIONS	"A"	"B"
-016	1.217[30.90]	1.013[25.72]
-032	2.004[50.90]	1.800[45.72]
-048	2.792[70.90]	2.588[65.72]
*-064	3.580[90.91]	3.375[85.73]
*-080	4.367[110.9]	4.163[105.73]

\* = SEE NOTES 10, 11 & 13

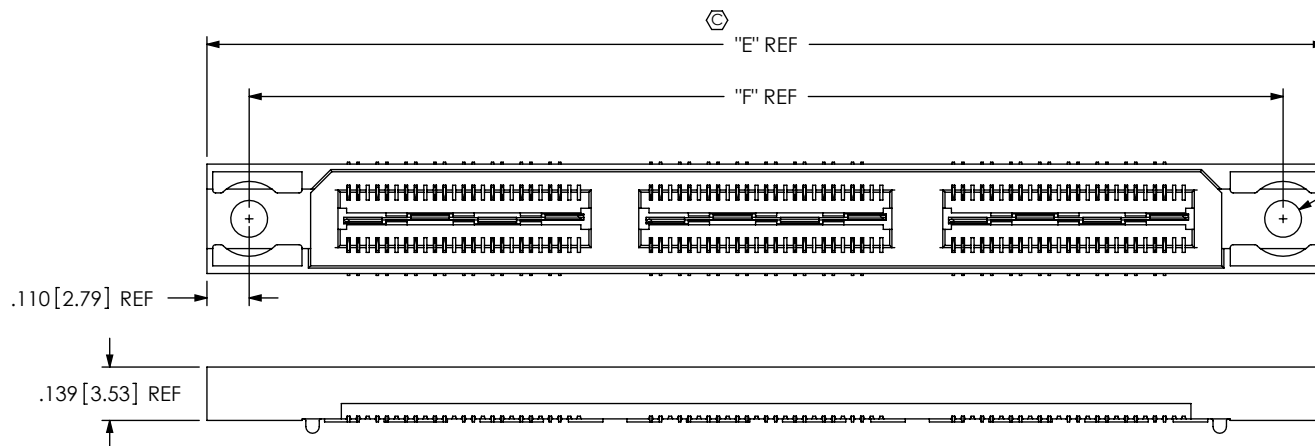


FIG 5  
-LS2: LOCKING SCREW OPTION  
(QSS-048-01-XXX-D-DP-LS2 SHOWN)  
(DIFFERENT AS SHOWN, OTHERWISE SAME AS FIG 1)  
(NOT AVAILABLE WITH -GP OPTION)

Ø.096 [2.44] REF  
(CLEARANCE HOLE FOR USE WITH 2-56 SCREW)

TABLE 5		
POS	"E"	"F"
-016	1.338 [33.97]	1.118 [28.38]
-032	2.125 [53.98]	1.905 [48.39]
-048	2.913 [73.98]	2.693 [68.39]
*-064	3.700 [93.98]	3.480 [88.39]
*-080	4.488 [113.98]	4.268 [108.39]

\* = SEE NOTES 10, 11 & 13

#### PROPRIETARY NOTE

THIS DOCUMENT CONTAINS INFORMATION  
CONFIDENTIAL AND PROPRIETARY TO  
SAMTEC, INC. AND SHALL NOT BE REPRODUCED  
OR TRANSFERRED TO OTHER DOCUMENTS OR  
DISCLOSED TO OTHERS OR USED FOR ANY  
PURPOSE OTHER THAN THAT WHICH IT WAS  
OBTAINED WITHOUT THE EXPRESSED WRITTEN  
CONSENT OF SAMTEC, INC.

DO NOT SCALE DRAWING

SHEET SCALE: 2:1

# samtec

520 PARK EAST BLVD, NEW ALBANY, IN 47150  
PHONE: 812-944-6733 FAX: 812-948-5047  
e-Mail: info@SAMTEC.com code 55322

DESCRIPTION:  
.635mm DIFFERENTIAL PAIRS HS SOCKET ASSEMBLY

DWG. NO.  
**QSS-XXX-XX-XXX-D-DP-XXX**

BY: KEVIN B 07/10/2000 SHEET 3 OF 3