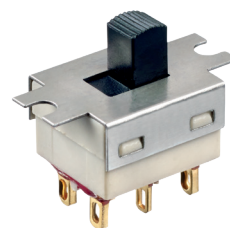


# G series

Slide switches • telecom grade



## DISTINCTIVE FEATURES

Panel and PC mount models

6 actuator lengths

Wide variety of contact materials



## ELECTRICAL SPECIFICATIONS

- Max. current/voltage rating with resistive load :
  - silver contacts (codes 1 or 2) : 3 A 30 VDC
  - gold plated brass contacts (code 0) : 0.4 VA 20 VAC or DC max.
- Initial contact resistance : 10 mΩ
- Insulation resistance : 1,000 MΩ min.
- Dielectric strength : 1,000 Vrms 50 Hz min.
- Electrical life with resistive load :
  - silver contacts (codes 1 or 2) : 2 positions : 40,000 cycles;  
3 positions : 20,000 cycles
  - gold plated brass contacts (code 0) : 60,000 cycles (0,4VA max.)



## GENERAL SPECIFICATIONS

- Travel : 2.20 mm (.086), except on model **GN3...** : 2.60 mm (.102)
- Operating temperature : -30 °C to +85 °C (-22 °F to +185 °F)
- Recommended soldering : 300 °C (572 °F) 5 sec. max.

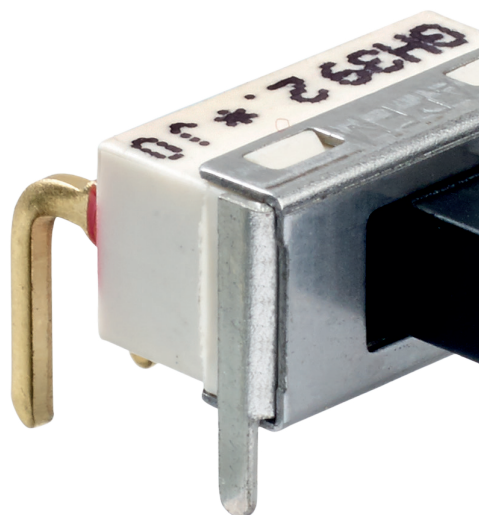


## MATERIALS

- Case : PES
- Actuator : PBT, glass filled
- Cover : stainless steel
- Contacts
  - 0 : brass, gold plated
  - 1 : silver
  - 2 : silver, gold plated
  - 5 : special contact, lower rating, minimum quantity : consult factory
- Terminal seal : epoxy

APEM products may be recycled at end-of-life for the re-claiming of valuable metal components.

The company reserves the right to change specifications without notice.



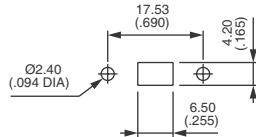
# G series

Slide switches • telecom grade

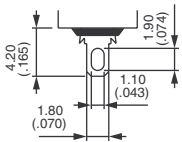


## PANEL CUT-OUT

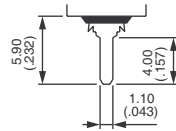
SOLDER LUG MODEL



## TERMINALS



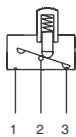
Solder lugs



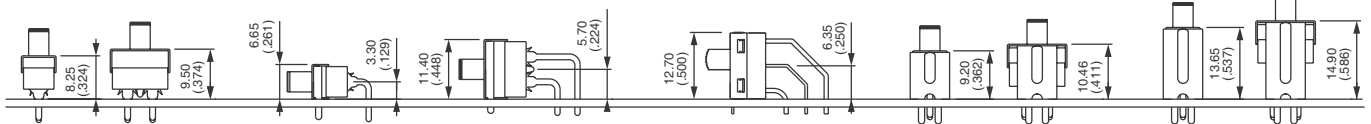
Straight PC



## ELECTRICAL FUNCTIONS



## PCB MOUNTING





## BUILD YOUR PART NUMBER

BASIC PART NUMBER									
G									
SERIES		ACTUATORS		NUMBER OF POLES		ELECTRICAL FUNCTIONS		TERMINALS	
		C	3.50 mm (.137)	3	Single pole	6	ON - ON	S0	Solder lugs
		H	5.10 mm (.200) Standard	4	Double pole	9	ON OFF ON	P0	Straight PC
		L	6.40 mm (.251)					W0	Right angle, horizontal
		B	7.65 mm (.301)					WW	Right angle, vertical
		E	9.10 mm (.358)					Y0	Straight PC with short bracket
		N	9.50 mm (.374)					Y4	Straight PC with tall bracket
		Types L, B and E for single pole models only.							
OPTIONS									
CONTACT AND TERMINAL MATERIALS				SPECIAL OPTIONS 1			SPECIAL OPTIONS 2		
0	Brass, gold plated			00	Standard model		00	No epoxy seal	
1	Silver			10	Switch without ground plate		01	Epoxy sealed terminals	
2	Silver, gold plated			11	10.35 mm (.407) PC terminals		10	Extended terminals	
5	Special contact, lower rating			12	Same as 11, without ground plate		11	Same as 10, with epoxy seal	



## ABOUT THIS SERIES

On the following pages, you will find successively basic part numbers of switches and options in the same order as in above chart.

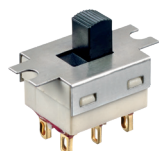


**Notice :** please note that not all combinations of above numbers are available. Refer to the following pages for further information.

# G series

Slide switches • telecom grade

## SOLDER LUG TERMINALS



Single pole Double pole

GH36S0	GH46S0	ON	-	ON
GH39S0	GH49S0	ON	OFF	ON

## STRAIGHT PC TERMINALS



Single pole Double pole

GH36P0	GH46P0	ON	-	ON
GH39P0	GH49P0	ON	OFF	ON

## RIGHT ANGLE TERMINALS - HORIZONTAL



Single pole Double pole

GH36W0	GH46W0	ON	-	ON
GH39W0	GH49W0	ON	OFF	ON

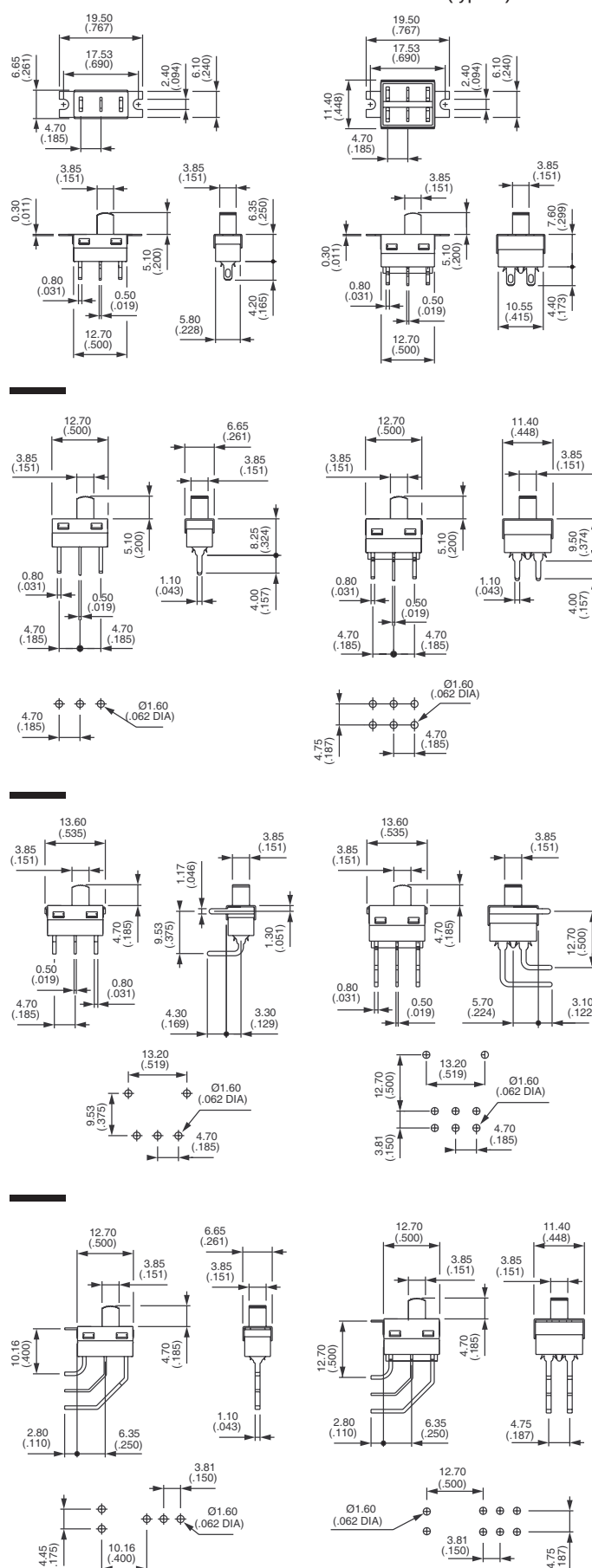
## RIGHT ANGLE TERMINALS - VERTICAL



Single pole Double pole

GH36WW	GH46WW	ON	-	ON
GH39WW	GH49WW	ON	OFF	ON

Shown with standard actuator (type H)



**APEM**

GH36Y0	GH46Y0
GH39Y0	GH49Y0



GH36Y4	GH46Y4
GH39Y4	GH49Y4

5.10  
(.200)

Diagram of a stepped shaft with a diameter of 6.40 (251) mm.

7.65  
(.301)

5

# G series

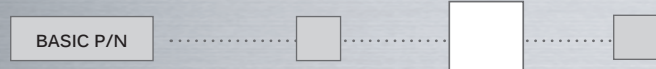
Slide switches • telecom grade

## CONTACT AND TERMINAL MATERIALS



- 0 Brass, gold plated
- 1 Silver
- 2 Silver, gold plated
- 5 Special contact, lower rating, minimum quantity : consult factory

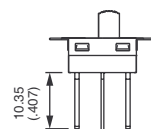
## SPECIAL OPTIONS 1



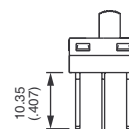
- 00 Standard switch as presented on previous pages
- 10 Switch without ground plate  
For right angle only (W0 and WW models)
- 11 10.35 mm (.407) long PC terminals
- 12 10.35 mm (.407) long PC terminals without ground plate



10

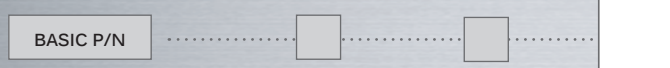


11

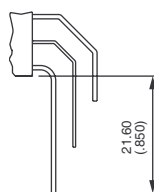


12

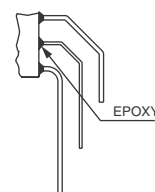
## SPECIAL OPTIONS 2



- 00 No epoxy seal
- 01 Epoxy sealed terminals  
(compulsory on solder lug models)
- 10 Extended terminals  
For vertical right angle (WW models)
- 11 Extended terminals as above, with epoxy seal



10



11