

4

3

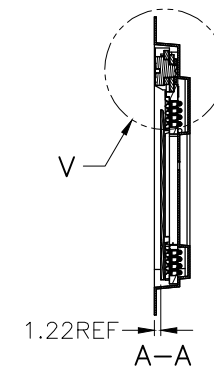
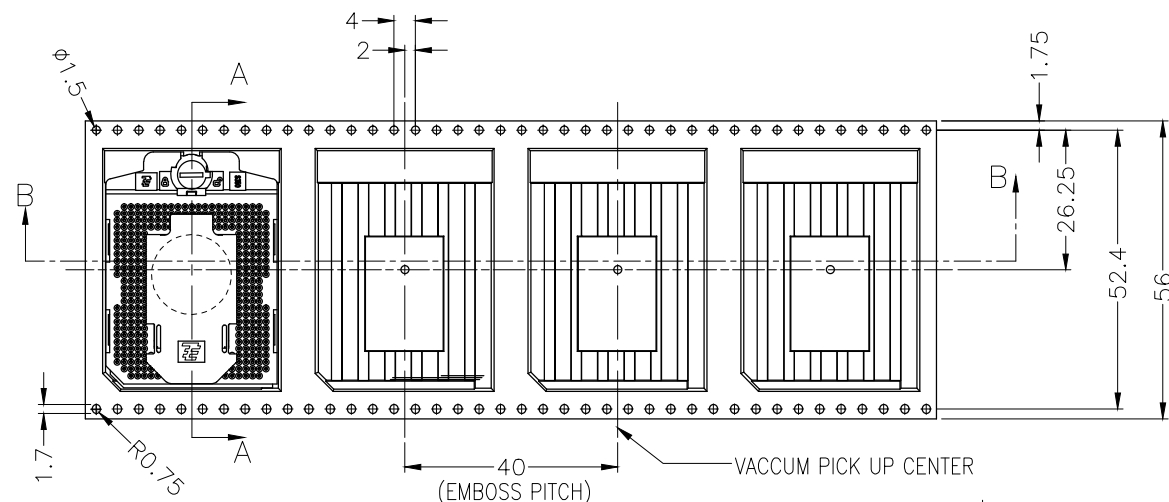
2

1

THIS DRAWING IS UNPUBLISHED. RELEASED FOR PUBLICATION  
© COPYRIGHT 2013 By TE Connectivity ALL RIGHTS RESERVED.

LOC	DIST	REVISIONS						
		P	LTR	DESCRIPTION	DATE	DWN	APVD	
—	—		A2	REVISED PER ECR-14-006043	28APR14	S.C	H.L	

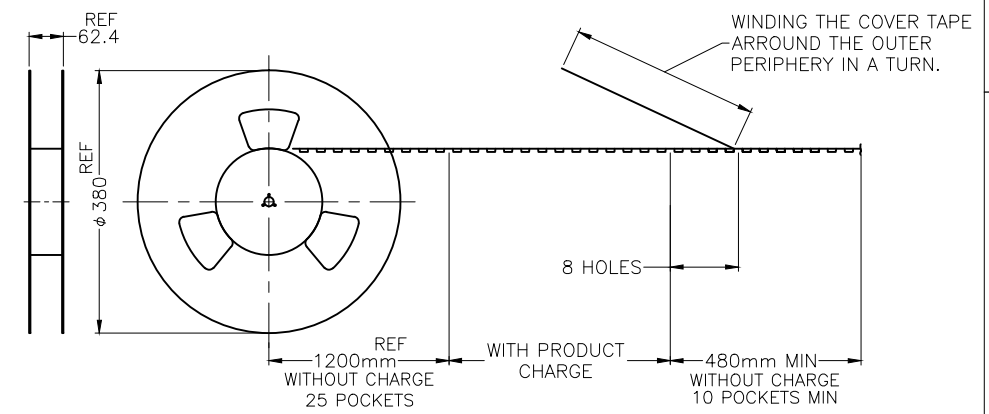
DIRECTION OFF TOP OF REEL



10.68KG	7.08KG	300	4	1200	2041549-1
GROSS WEIGHT	NET WEIGHT	PCS/ REEL	REEL/ BOX	PCS/ BOX	PART NUMBER

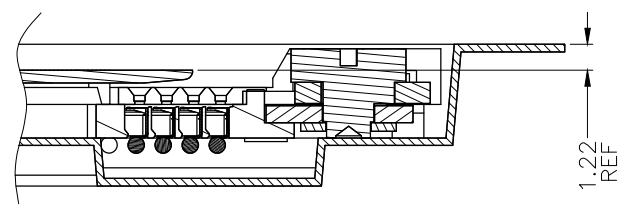
B-B

FOR EMBOSS PACKING  
300PCS/REEL  
(REFERENCE)



FOR EMBOSS PACKING  
(REFERENCE)

2041549-1
PART NUMBER



DETAIL V  
CW 90°

THIS DRAWING IS A CONTROLLED DOCUMENT.		DWN A. WU	26SEP2013	TE Connectivity			
DIMENSIONS: mm		CHK S. CHIEN	26SEP2013				
TOLERANCES UNLESS OTHERWISE SPECIFIED:		APVD W. KODAMA	26SEP2013	NAME			
0 PLC ± -		PRODUCT SPEC		DMD 350 SOCKET CONNECTOR			
1 PLC ± 0.3		APPLICATION SPEC		SIZE			
2 PLC ± 0.2		WEIGHT	5.9 g	A300779C=2041549			
3 PLC ± 0.15		CUSTOMER DRAWING		SCALE		SHEET	
4 PLC ± -				NA		1 of 5	
ANGLES ± -						REV	
FINISH						A2	

4

3

2

1

THIS DRAWING IS UNPUBLISHED.  
RELEASED FOR PUBLICATION  
ALL RIGHTS RESERVED.

LOC	DIST	REVISIONS				
P	LTR	DESCRIPTION		DATE	DWN	APVD
—	—	SEE SHEET 1				

D

C

B

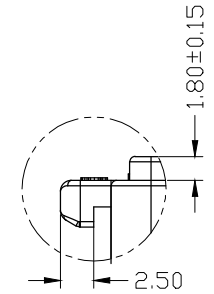
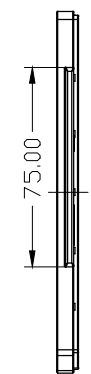
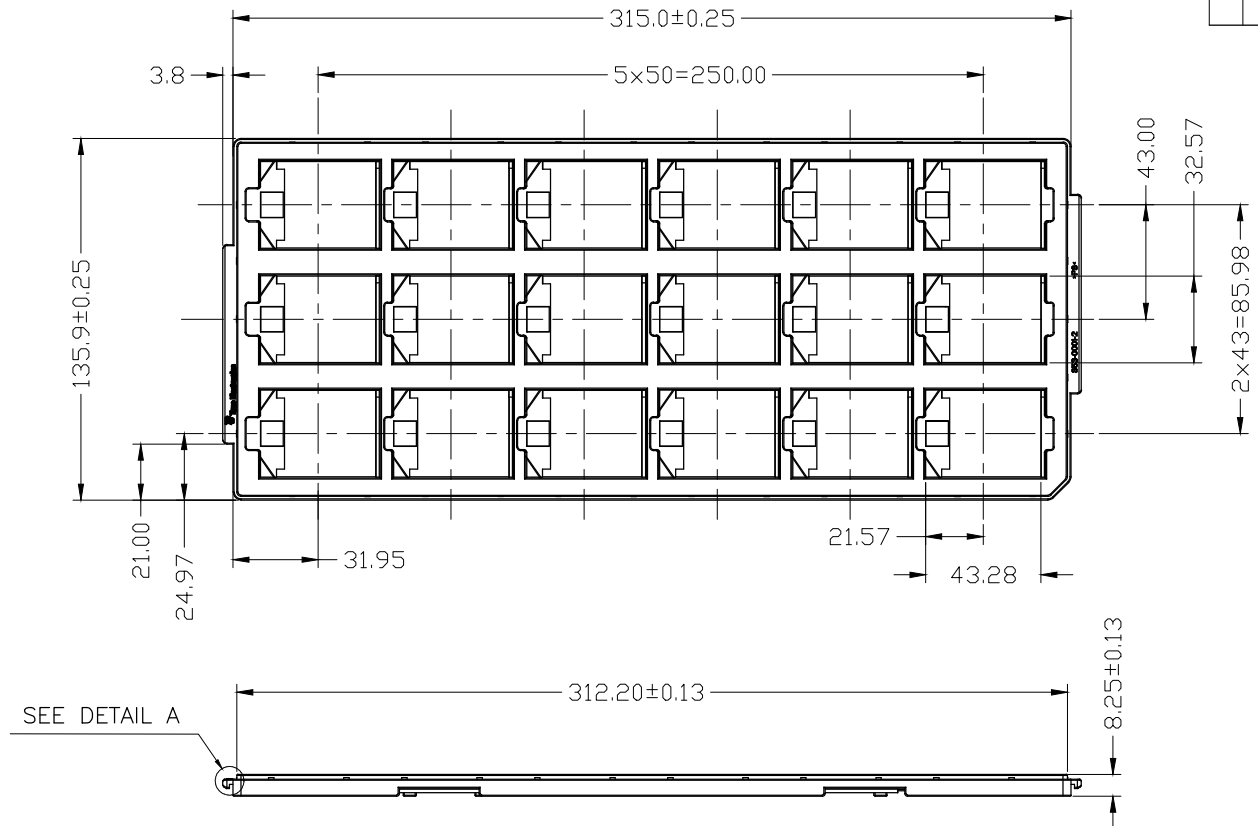
A

D

C

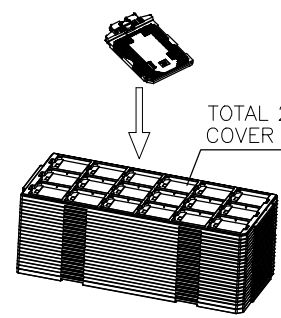
B

A

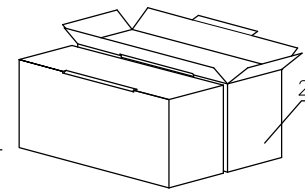


DETAIL A  
SCALE 5:1

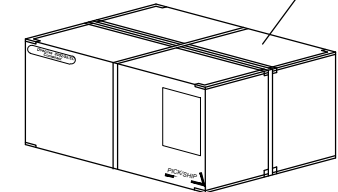
SEE DETAIL A



TOTAL 21PCS TARY COVER TRAY IS EMPTY



21PCS TRAY/INNER BOX



PACKAGED CARTON

340 L X 300 W X 155 H

9.82KG	4.21KG	18	42	720	2041549-2
GROSS WEIGHT	NET WEIGHT	PCS/ TRAY	TRAY/ BOX	PCS/ BOX	PART NUMBER

2041549-2
PART NUMBER

THIS DRAWING IS A CONTROLLED DOCUMENT.

DIMENSIONS: mm	TOLERANCES UNLESS OTHERWISE SPECIFIED:
	0 PLC ± -
	1 PLC ± 0.3
	2 PLC ± 0.2
	3 PLC ± 0.15
	4 PLC ± -
	ANGLES ± -
MATERIAL	FINISH

DWN	CHK	APVD	PRODUCT SPEC	APPLICATION SPEC	WEIGHT	CUSTOMER DRAWING

**TE** TE Connectivity

NAME

DMD 350 SOCKET CONNECTOR

SIZE	CAGE CODE	DRAWING NO	RESTRICTED TO
A3	00779	C=2041549	

SCALE	NA	SHEET	2 OF 5	REV	A2
-------	----	-------	--------	-----	----

THIS DRAWING IS UNPUBLISHED.

RELEASED FOR PUBLICATION

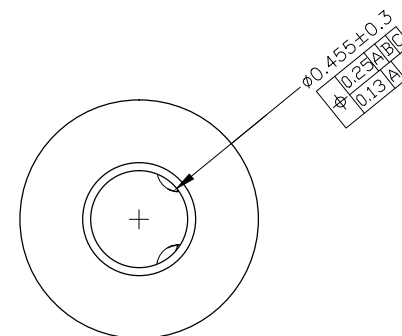
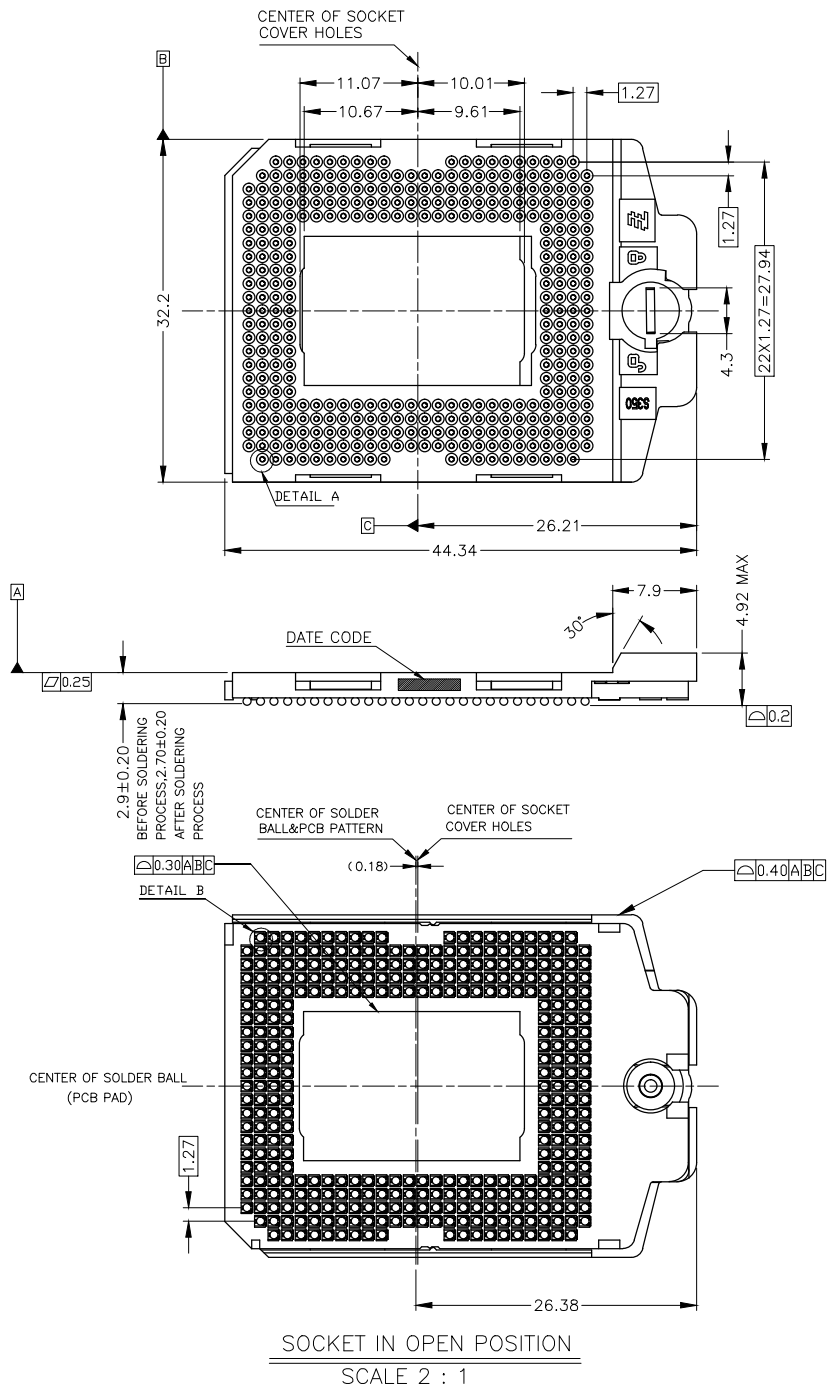
ALL RIGHTS RESERVED.

© COPYRIGHT 2013 By --

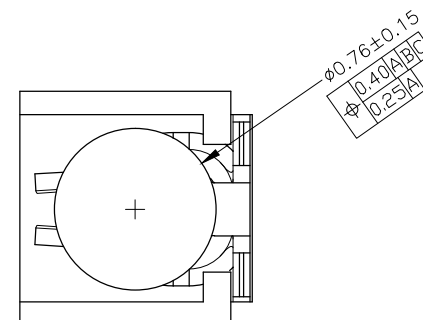
LOC	DIST	REVISIONS				DATE	DWN	APVD
P	LTR	DESCRIPTION						
—	—	SEE SHEET 1				—	—	—

## NOTES:

- MATERIAL:  
COVER: LCP WITH 30% GF, UL94 V-0, NATURAL COLOR.  
BASE: LCP WITH 30% GF, UL94 V-0, NATURAL COLOR.  
CAP: LCP WITH 30% GF, UL94 V-0, BLACK COLOR.  
CAM: STAINLESS STEEL.  
BASE PLATE: STAINLESS STEEL.  
COVER PLATE: STAINLESS STEEL.  
WASHER: STAINLESS STEEL.  
CONTACTS: HIGH PERFORMANCE COPPER ALLOY.  
SOLDER BALL: Sn-Ag-Cu,  $\phi 0.76$
- FINISH:  
CONTACTS: GOLD FLASH PLATED ON CONTACT AREA,  $1.27\mu\text{m}$  [ $50\mu$ ] MIN. NICKEL UNDERPLATED
- REFLOW SOLDER CAPABLE TO  $260^{\circ}\text{C}$  PER TEC-109-201, METHOD B, CONDITION B.
- SUBSTANCE RESTRICTIONS FOR LOW HALOGEN (BY WEIGHT):
  - BROMINE (Br)  $\leq 900$  PPM (0.09%)
  - CHLORINE (Cl)  $\leq 900$  PPM (0.09%)
  - TOTAL CONCENTRATION OF (Cl) + (Br)  $\leq 1500$  PPM (0.15%)



DETAIL A  
SCALE 40 : 1



DETAIL B  
SCALE 40 : 1

THIS DRAWING IS A CONTROLLED DOCUMENT.		DWN	—	TE Connectivity			
		CHK	—				
DIMENSIONS:		APVD	—	NAME			
mm		PRODUCT SPEC	—	DMD 350 SOCKET CONNECTOR			
		APPLICATION SPEC	—	SIZE	CAGE CODE	DRAWING NO	RESTRICTED TO
MATERIAL		WEIGHT	5.9g	A3	00779	C=2041549	—
		FINISH	—	CUSTOMER DRAWING	SCALE	SHEET	REV
					1:1	3 of 5	A2

4

3

2

1

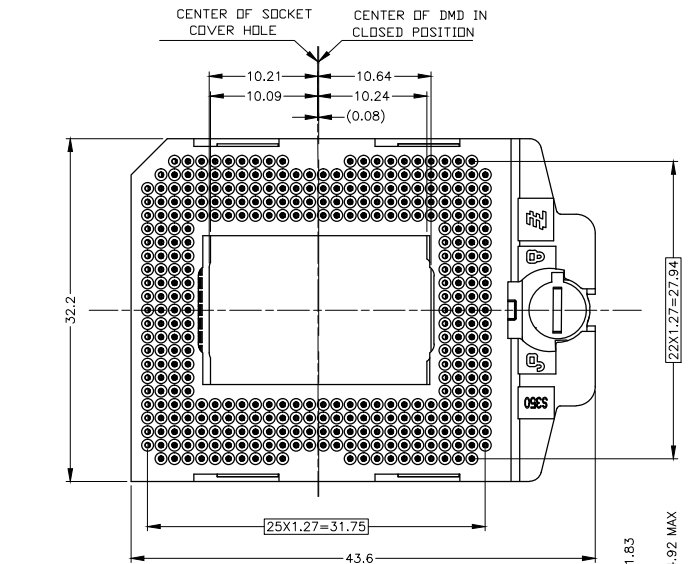
THIS DRAWING IS UNPUBLISHED.

RELEASED FOR PUBLICATION

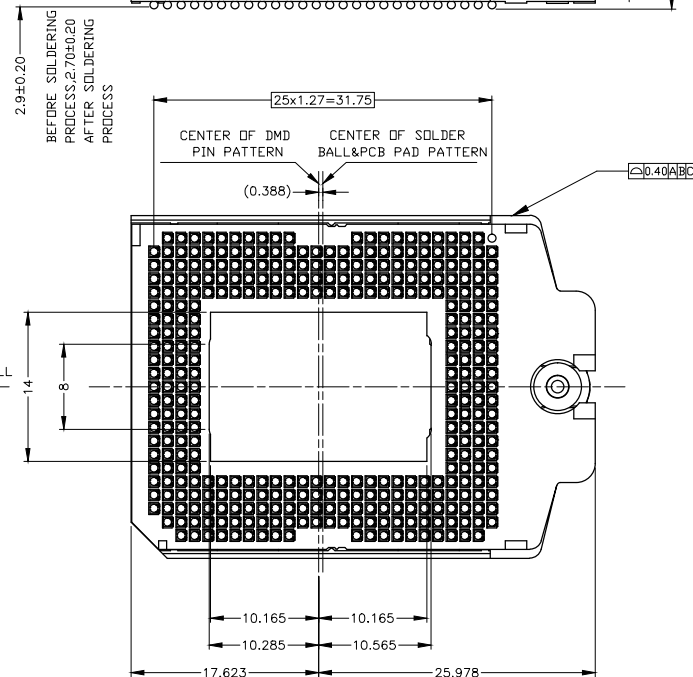
ALL RIGHTS RESERVED.

© COPYRIGHT 2013 By --

LOC	DIST	REVISIONS				DATE	DWN	APVD
P	LTR	DESCRIPTION						
--	--	SEE SHEET 1				--	--	--

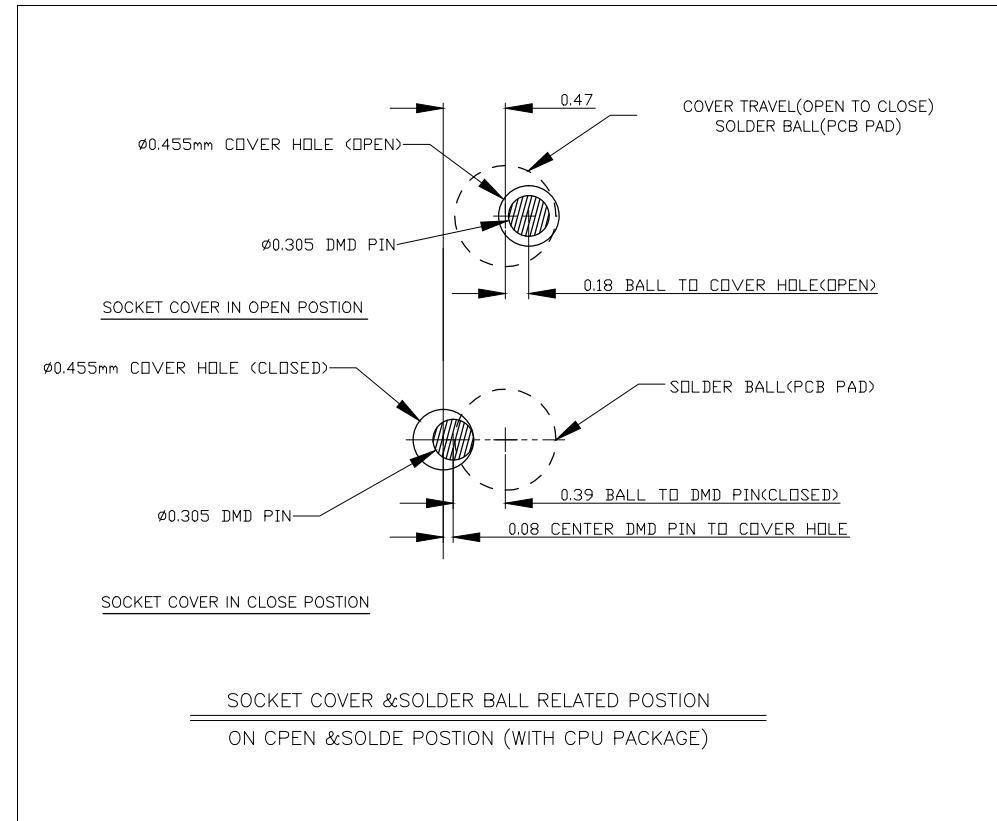


CENTER OF COVER HOLE  
(CENTER OF DMD PIN)



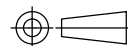
SOCKET IN CLOSED POSITION

SCALE 2 : 1



THIS DRAWING IS A CONTROLLED DOCUMENT.

DIMENSIONS:  
mm



TOLERANCES UNLESS  
OTHERWISE SPECIFIED:

0 PLC ± -  
1 PLC ± 0.3  
2 PLC ± 0.2  
3 PLC ± 0.15  
4 PLC ANGLES ± -

MATERIAL

FINISH

DWN

CHK

APVD

PRODUCT SPEC

APPLICATION SPEC

WEIGHT

CUSTOMER DRAWING



TE Connectivity

DMD 350 SOCKET CONNECTOR

SIZE

CAGE CODE

DRAWING NO

RESTRICTED TO

A3 00779 C=2041549

SCALE 1:1

SHEET 4 OF 5

REV A2

4

3

2

1

THIS DRAWING IS UNPUBLISHED.

RELEASED FOR PUBLICATION

ALL RIGHTS RESERVED.

© COPYRIGHT 2013 By --

LOC

DIST

REVISIONS

P

LTR

DESCRIPTION

DATE

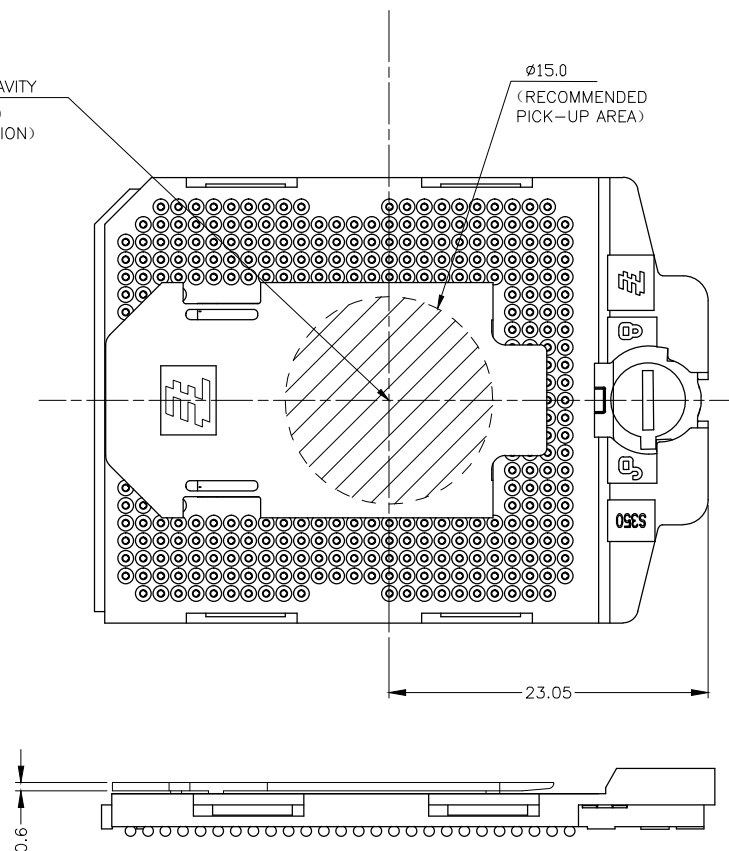
DWN

APVD

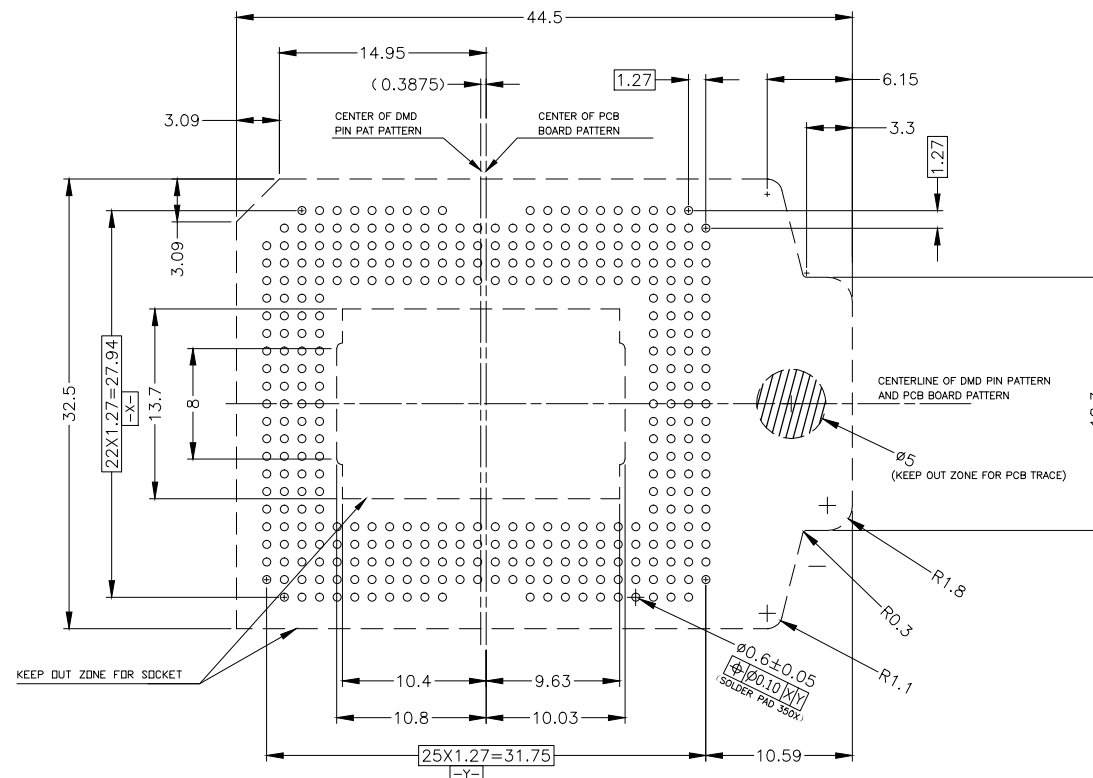
SEE SHEET 1

CENTER OF GRAVITY  
(RECOMMENDED  
PICK-UP LOCATION)

Ø15.0  
(RECOMMENDED  
PICK-UP AREA)



PLASTIC CAP LOCATION  
SOCKET IN OPEN POSITION LOCATION



RECOMMENDED PCB LAYOUT  
(TOLERANCE: ±0.05)

THIS DRAWING IS A CONTROLLED DOCUMENT.

DIMENSIONS:

mm



MATERIAL

TOLERANCES UNLESS  
OTHERWISE SPECIFIED:

0 PLC ± -  
1 PLC ± 0.3  
2 PLC ± 0.2  
3 PLC ± 0.15  
4 PLC ± -  
ANGLES ± -

FINISH

DWN

CHK

APVD

PRODUCT SPEC

APPLICATION SPEC

WEIGHT

NAME



TE Connectivity

DMD 350 SOCKET CONNECTOR

SIZE

CAGE CODE

DRAWING NO

RESTRICTED TO

A3

00779

C=2041549

CUSTOMER DRAWING

SCALE 1:1

SHEET 5 OF 5

REV A2