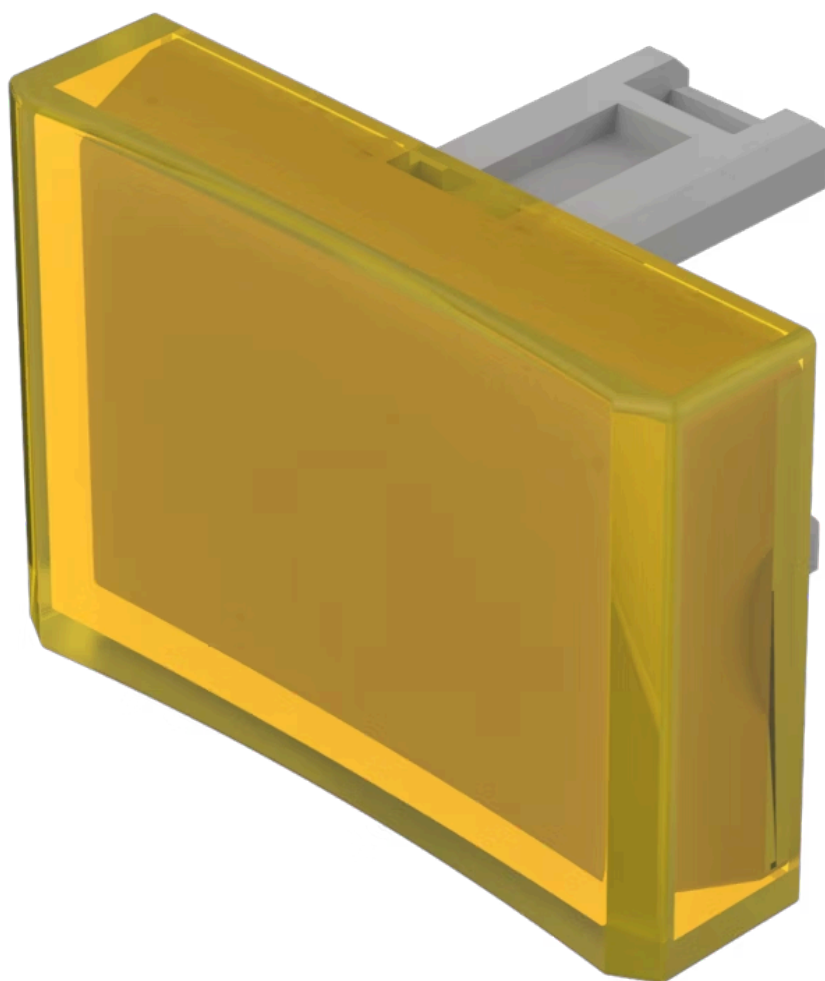


Lens

31-
904.4



<https://eao.com/p/31-904.4>

Your product:



31-904.4 Lens

FRONT

Front form: rectangular

OPERATING-/INDICATION PART

Lens shape: concave

Lens material: Plastic

Lens illumination: illuminative

Lens optics: transparent

Lens colour: Yellow

MECHANICAL CHARACTERISTIC

Weight: 0.001 kg

OTHER

Short Description: Lens, 21.5 mm x 15.3 mm, illuminative, Yellow, concave, Plastic

Dimension: 21.5 mm x 15.3 mm