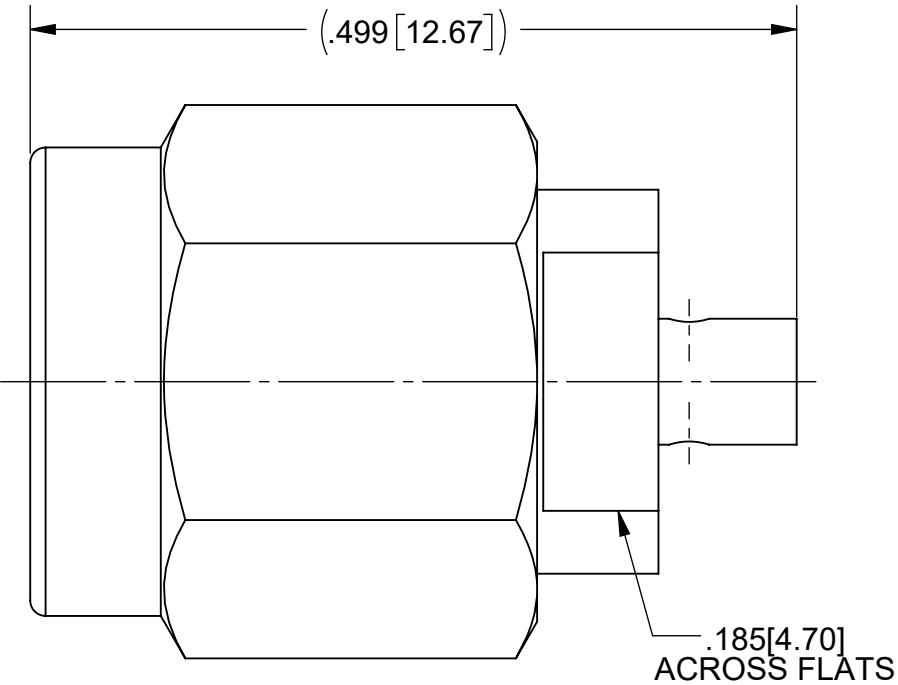
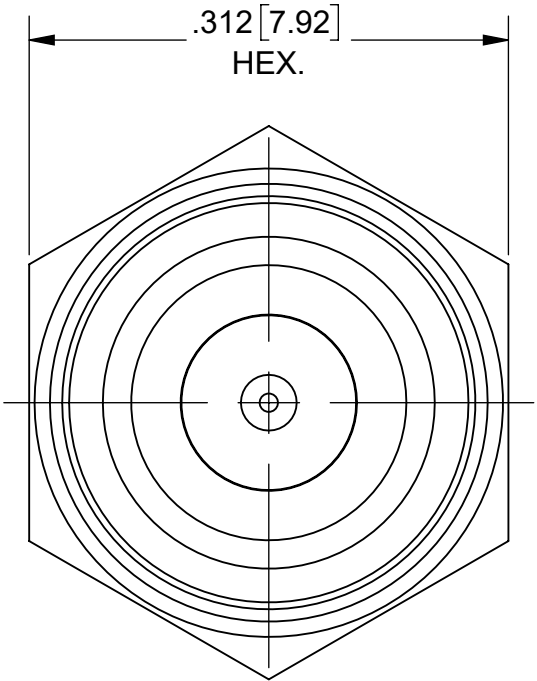
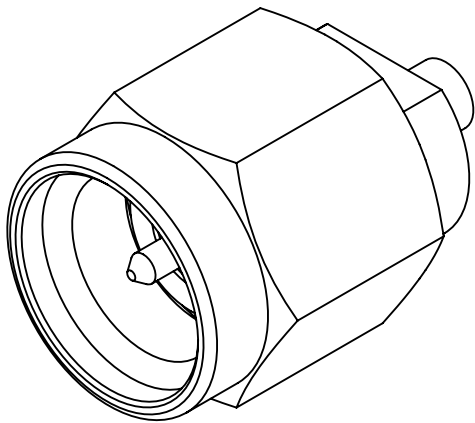


PRODUCT DATA DRAWING

REVISION HISTORY			
REV	DESCRIPTION	DATE	APPROVED
A	DCN 41517	07/15	SEE PDM
B	DCN 51187	11/21	



MATERIAL:


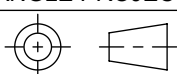
BODY & COUPLING NUT:	STAINLESS STEEL
LOCK RING & CONTACT:	BERYLLIUM COPPER
INSULATOR:	PTFE
GASKET:	SILICONE RUBBER

FINISH:

COUPLING NUT:	PASSIVATED
BODY & CONTACT:	GOLD OVER NICKEL

PERFORMANCE:

IMPEDANCE:	50 OHMS
FREQ. RANGE:	DC TO 26.5 GHz.

MATERIAL:	SEE NOTES	DIMENSIONS ARE IN INCHES TOLERANCES: FRACTIONAL: $\pm 1/64$ ANGULAR: X° $\pm 1^{\circ}0'$ X°X' $\pm 15'$ DECIMAL: .X $\pm .030$.XX $\pm .010$.XXX $\pm .005$ INTERPRET DIMENSIONS AND TOLERANCES PER ASME Y14.5M - 1994	UNLESS OTHERWISE SPECIFIED 1) ALL DIMENSIONS ARE IN INCHES (MILLIMETERS) 2) ALL DIMENSIONS ARE AFTER PLATING. 3) BREAK CORNERS & EDGES .005 R. MAX. 4) CHAM. 1ST & LAST THREADS. 5) SURFACE ROUGHNESS 63-MIL-STD-10. 6) DIA.'S ON COMMON CENTERS TO BE CONCENTRIC WITHIN .005 T.I.R. 7) REMOVE ALL BURRS	<div> www.svmicrowave.com</div> <div>TITLE: SMA PLUG FOR .047 FLEX CABLE</div>		
FINISH:	SEE NOTES					
SURFACE AREA:	N/A	<div>THIRD ANGLE PROJECTION</div> <div></div>	DRAWN:	ELA 10/16/12		
PROPRIETARY THE INFORMATION CONTAINED IN THIS DRAWING IS THE SOLE PROPERTY OF SV MICROWAVE, INC. ANY REPRODUCTION IN PART OR AS A WHOLE WITHOUT THE WRITTEN PERMISSION OF SV MICROWAVE, INC IS PROHIBITED.			CHECKED:	SEE PDM		
		APPROVED:	SEE PDM			
			SIZE B	DWG. NO.	SF2911-60172	
			SCALE: 8:1		SHEET 1 OF 1	