

Actuator

14-
506.0220



<https://eao.com/p/14-506.0220>

Your product:



14-506.0220

Actuator

FRONT

Front bezel colour:	Nature
Front bezel material:	Aluminium

OPERATING-/INDICATION PART

Lever shape:	short
Lever colour:	Black
Lever material:	plastic

ELECTRICAL CHARACTERISTICS

Thermal current I _{th} :	The maximum current in continuous operation and at ambient temperature not exceeding the quoted maximum values. 3 A
Rated Operational Voltage U _e :	250 VAC/DC according to EN IEC 61058-1
Switching voltage and switching current:	250 VAC, 5 A (ohmic) 250 VAC, 3 A (Soldering terminal) 250 VAC, 2 A (inductive, cos(phi) = 0.7) 220 VDC, 0.1 A (inductive, L:R = 30 ms) 110 VDC, 0.2 A (inductive, L:R = 30 ms) 60 VDC, 0.7 A (inductive, L:R = 30 ms) 24 VDC, 2 A (inductive, L:R = 30 ms)
Contacts:	1 NC / 1 NO
Electric strength:	3000 VAC, 50 Hz, 1 min. between all terminals and earth, according to EN/IEC 61058-1
Protection class:	II
Standards:	According to EN/IEC 61058-1
Electrical lifetime:	50 000 cycles of operation

MECHANICAL CHARACTERISTIC

Switching action:	Rest - Maintained
Switching system:	Snap-action switching element
Contact material:	Gold-plated silver
Switching positions:	2 positions
Operating Travel:	ca. 90°
Switching angle:	90° right
Operating force:	5 N ... 8 N
Mechanical lifetime:	1 Mio. cycles of operation
Terminal:	Plug-in terminal, 2.8 x 0.5 mm
Switching system:	Self-cleaning, double-break snap action switching system (contact opening width 2 mm x 0.5 mm), 1 normally closed and 1 normally open contact per element.
Weight:	0.024 kg
Tightening torque:	Fixing nut max. 0.25 Nm

AMBIENT CONDITION

Shock resistance:	Max. 150 m / s ² , pulse width 11 ms, 3-axis, (semi-sinusoidal as per EN IEC 60068-2-27)
IP front protection:	IP67, according to DIN EN 60529
Operating temperature:	– 25 °C ... + 55 °C, mounted as a block, make sure the heat can escape freely
Storage temperature:	– 40 °C ... + 85 °C
Climate resistance:	Standard condition, as per DIN EN 60068-2-78 Standard cyclic, as per DIN IEC 60068-2-30
Vibration resistance:	Max. 100 m / s ² from 10 Hz ... 500 Hz, (sinusoidal EN IEC 60068-2-6)

CERTIFICATE

Approbations:	CB (IEC 61058-1), CQC, CSA, DNV, EAC, ENEC (EN 61058-1), UL, VDE
Conformities:	CE, UKCA, 2011 / 65 / EC (RoHS), 2014 / 35 / EU (LVD)

OTHER

Housing colour:	Black
Short Description:	Actuator, non illuminative, Black, short, Nature, Aluminium, anodised, 1 NC / 1 NO, Rest - Maintained, Plug-in terminal, 2.8 x 0.5 mm, IP67, according to DIN EN 60529

Hints:

The colour of anodised aluminium parts can vary due to technical production reasons

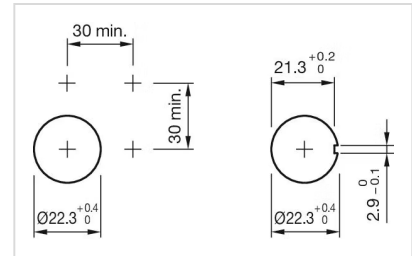
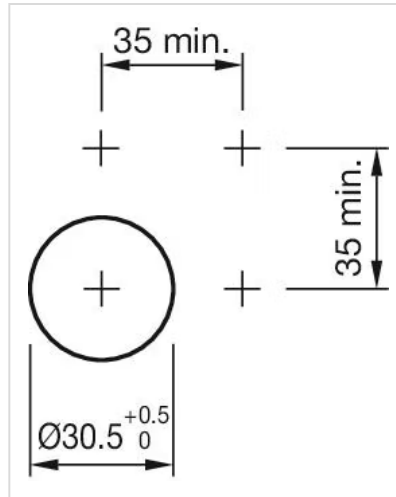
max. number of switching elements:

1

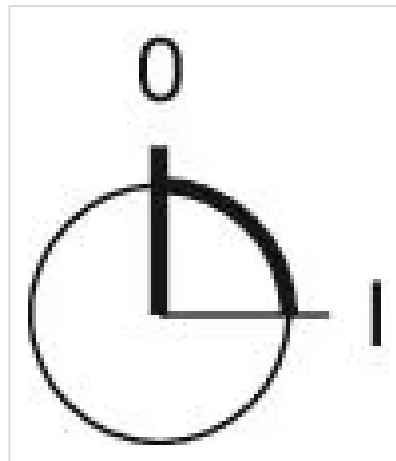
Housing material:

Plastic

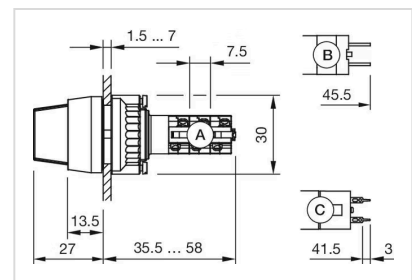
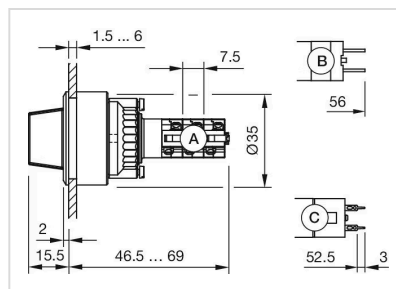
Mounting cut-outs:



Switching positions:



Dimension drawings:



Wiring diagrams:

