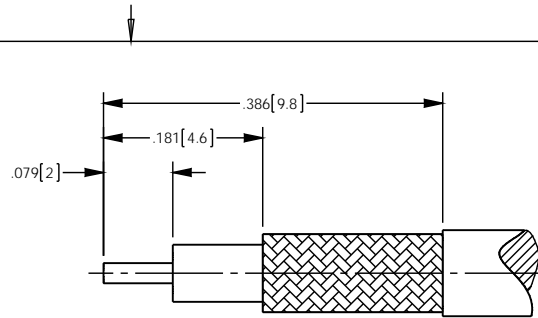


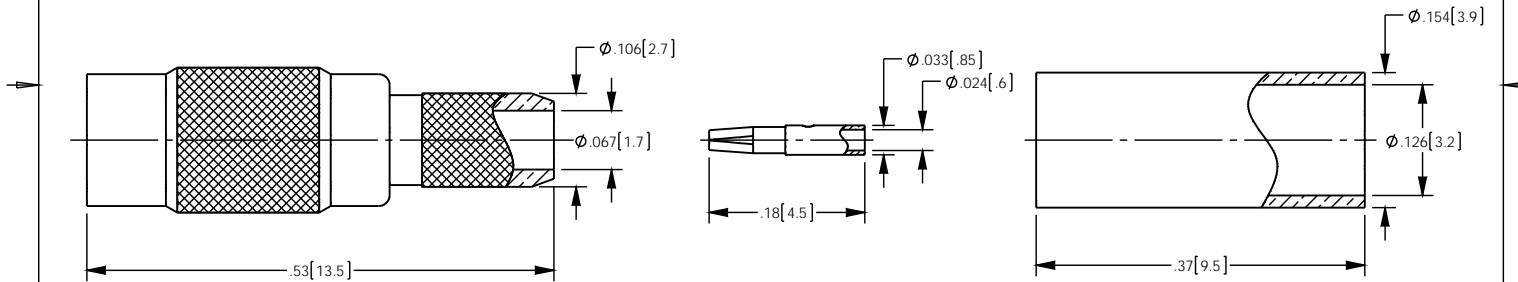
NOTES: UNLESS OTHERWISE SPECIFIED

1. FOR USE WITH RG-174/U, 188A/U, 316/U OR EQUIVALENT
2. MATERIAL SPECIFICATIONS:  
INSULATOR: PTFE, COLOR - NATURAL  
CONTACT: BERYLLIUM COPPER  
ALL OTHER METAL PARTS: BRASS
3. FINISH SPECIFICATIONS:  
CONTACT: .000003 MIN THICK GOLD OVER .000050 MIN THICK NICKEL  
ALL OTHER METAL: THIN GOLD OVER .000050 MIN THICK COPPER
4. ELECTRICAL SPECIFICATIONS:  
IMPEDANCE: 50 OHMS
5. CONTACT AND FERRULE SHIPPED LOOSE.
6. CRIMP FERRULE (.128 HEX) AND SOLDER TO CONTACT.

REV	DESCRIPTION	BY DATE	APPD
A	ER056138	JL 12/16/14	SK



RECOMMENDED CABLE STRIPPING DIM'S



CATALOG P/N: 1320A204M

<small>PER ASME Y14.5M-1994 UNLESS OTHERWISE SPECIFIED, DIMENSIONS ARE IN INCHES (MM) TOLERANCES: DECIMAL: .XX [XX] ± .01 [0.3]           XXX [X.XX] ± .005 [0.13]           XXXX [X.XXX] ± .000X ANGLES: ± 2°      SCALE: 6:1</small>				 <small>Winchester Electronics Corporation 199 Park Road Ext Suite 104 Middlebury, Connecticut 06762</small>				
<b>CUSTOMER SALES DRAWING</b>				<b>THIRD ANGLE</b> 				
<b>MMCX CRIMP JACK FOR RG-174/U, 188A/U, 316/U</b>								
<small>DRAWN</small> JL	<small>DATE</small> 12/16/2014	<small>APPROVED</small> SK	<small>DATE</small> 12/19/2014	<b>A</b>	<b>SD1320A204M</b>	<small>SHT</small> 1	<small>OF</small> 1	<small>REV</small> A