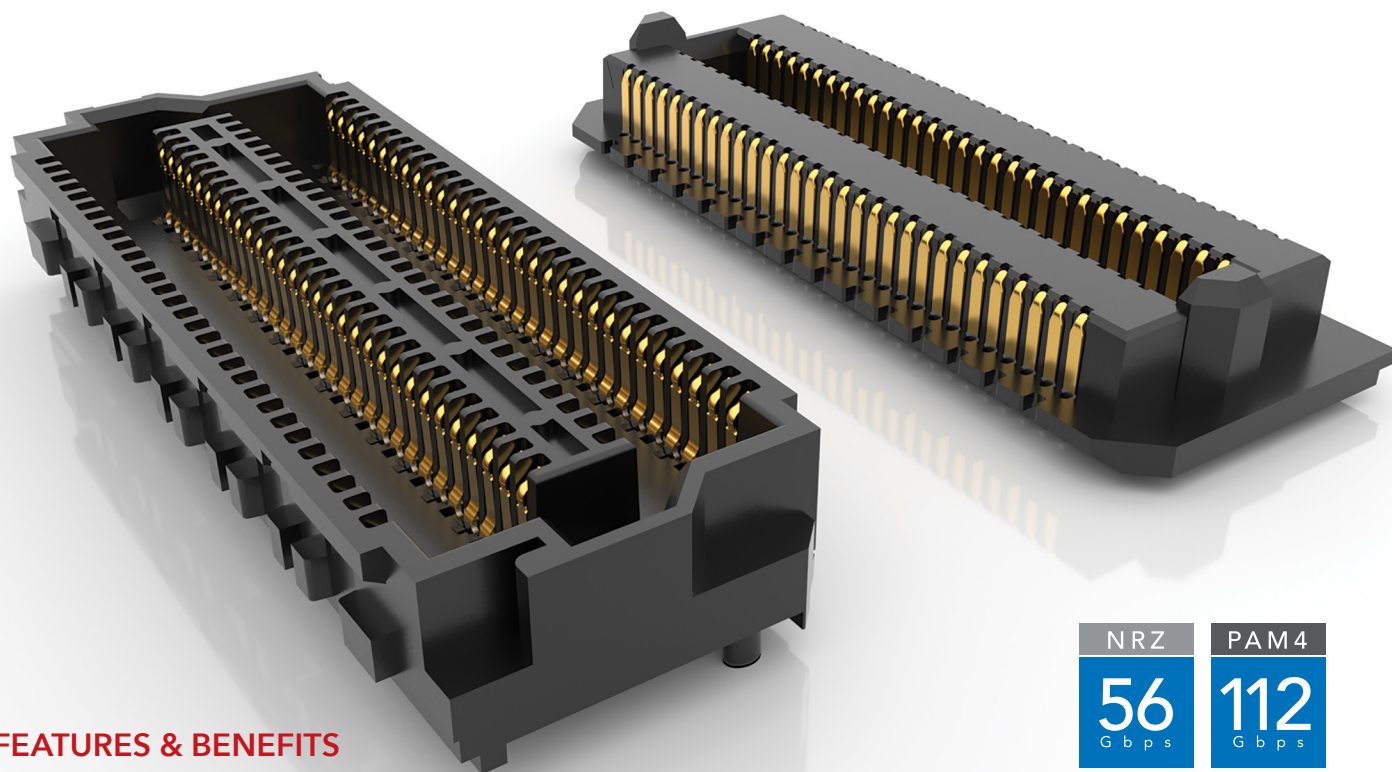


# ACCELERATE<sup>®</sup>HP

## HIGH-PERFORMANCE ARRAY SYSTEM

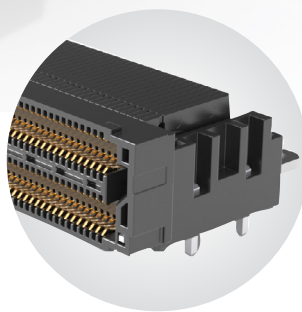
(0.635 mm) .025" PITCH



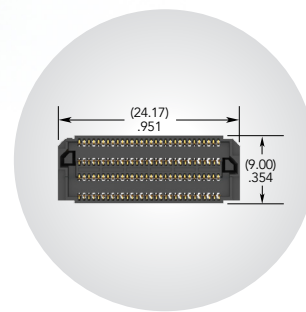
### FEATURES & BENEFITS

- Flexible open-pin-field and cost optimized, extreme performance solution
- Low profile 5 mm and up to 10 mm stack heights
- 0.635 mm pitch
- Four row design with up to 400 total pins; roadmap to 1,000+ pins
- Data rate compatible with PCIe<sup>®</sup> 6.0/CXL<sup>™</sup> 3.1 and 100 GbE
- In Development: 6, 8 and 10 rows, additional position counts

NRZ	PAM4
56 Gbps	112 Gbps



Right-angle connector  
([samtec.com?APF6-RA](https://www.samtec.com?APF6-RA))



APF6 Series; 120 pins

### KEY SPECIFICATIONS (APM6/APF6)

TOTAL PINS	INSULATOR MATERIAL	CONTACT MATERIAL	PLATING	OPERATING TEMP RANGE	CURRENT RATING	VOLTAGE RATING	LEAD-FREE SOLDERABLE
40 - 400	Black LCP	Copper Alloy	Au or Sn over 50 $\mu$ " (1.27 $\mu$ m) Ni	-55 °C to +125 °C	1.2 A (4 pins powered)	150 VAC	Yes

PCI-SIG<sup>®</sup>, PCI Express<sup>®</sup> and the PCIe<sup>®</sup> design marks are registered trademarks and/or service marks of PCI-SIG.

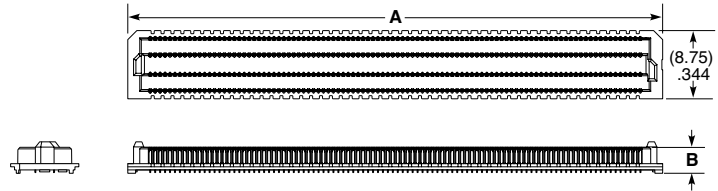
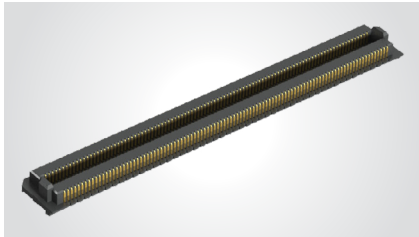
# (0.635 mm) .025" PITCH • 112 Gbps PAM4 OPEN-PIN-FIELD ARRAYS

SERIES	NO. OF POSITIONS	LEAD STYLE	PLATING OPTION	NO. OF ROWS	0	OPTION	"X"R
<b>APM6</b> Terminal	<b>-020, -040, -060, -100</b> (per row)	<b>-01.5</b> = 1.5 mm (APM6 only)	<b>-L</b> = 10 $\mu$ " (0.25 $\mu$ m) Gold on contact area, Matte Tin on tail	<b>-04</b> = Four Rows		(Leave blank for no alignment pin)	<b>-TR</b> = Tape & Reel
<b>APF6</b> Socket	<b>-064</b> (per row) (APM6 & -01.9 lead style only)	<b>-01.9</b> = 1.9 mm (APM6-064 only)	<b>-S</b> = 30 $\mu$ " (0.76 $\mu$ m) Gold on contact area, Matte Tin on tail			<b>-A</b> = Alignment Pin	<b>-FR</b> = Full Reel Tape & Reel (must order max. quantity per reel; contact Samtec for quantity breaks)
		<b>-06.5</b> = 6.5 mm (APM6 only)					
		<b>-03.5</b> = 3.5 mm (APF6 only)					

## APM6

Board Mates:  
APF6, APF6-RA

Standoffs:  
GPSO



NO. OF POSITIONS PER ROW	A	LEAD STYLE	B
-020	(17.82) .701	-01.5	(3.33) .131
-040	(30.52) 1.201	-01.9	(3.71) .146
-060	(43.22) 1.701	-06.5	(8.33) .328
-064	(45.21) 1.780		
-100	(68.62) 2.701		

View complete specifications at: [samtec.com?APM6](http://samtec.com?APM6)

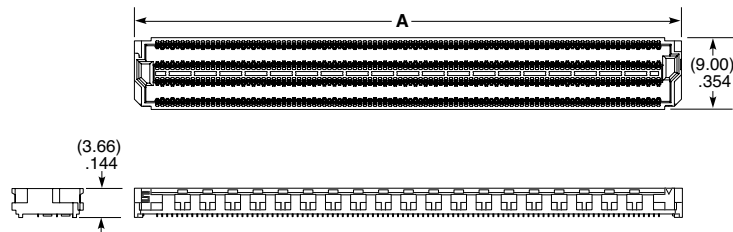
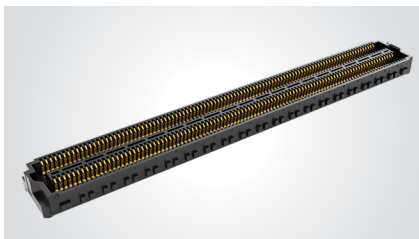
MATED HEIGHTS *		
APF6 LEAD STYLE	APM6 LEAD STYLE	
	-01.5	-06.5
-03.5	(5.00 mm) .197"	(10.00 mm) .394"

\* Processing conditions will affect mated height.

## APF6

Board Mates:  
APM6

Standoffs:  
GPSO



## ALSO AVAILABLE

Right-angle  
[samtec.com?APF6-RA](http://samtec.com?APF6-RA)

## Notes:

Some sizes, styles and options are non-standard, non-returnable

NO. OF POSITIONS PER ROW	A
-020	(17.82) .701
-040	(30.52) 1.201
-060	(43.22) 1.701
-100	(68.62) 2.701

View complete specifications at: [samtec.com?APF6](http://samtec.com?APF6)