



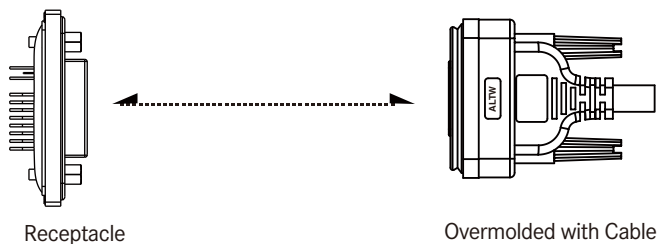
## CATALOGUE

## DVI Connector

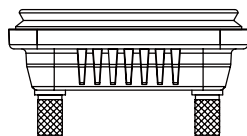


## Range Overview

### ▾ Receptacle to Overmolded with Cable



### ▾ Accessories



Waterproof Cap

# Specification

<b>Identifications</b>	DVI-D Single Link <b>(DDS)</b> : Digital DVI-D Dual Link <b>(DDD)</b> : Digital DVI-I Single Link <b>(DIS)</b> : Digital and Analog DVI-I Dual Link <b>(DID)</b> : Digital and Analog
<b>Description</b>	Receptacle Overmolded with Cable
<b>Current Rating / Data</b>	1.5A
<b>Material</b>	Contacts: Cooper Alloy, Gold Plated Connector Body (Housing): Nylon + GF, UL Recognized Shell: Steel, Nickel Plated
<b>Waterproof Rating</b>	Receptacle: IP68 Overmolded with Cable: IP67
<b>Temperature Range</b>	Receptacle: -20°C~80°C Overmolded with Cable: -20°C~80°C
<b>Contact Resistance</b>	$\leq 20\text{m}\Omega$
<b>Insulation Resistance</b>	$\geq 1000\text{M}\Omega$ at DC500V
<b>Durability</b>	100 cycles
<b>Breakdown Voltage</b>	$\geq \text{AC } 500\text{V} / 1 \text{ minute}$
<b>More to know</b>	Standard Cable Length: 01~05M

【Note】 Design and specification are subject to change without notice.

# Ordering Information

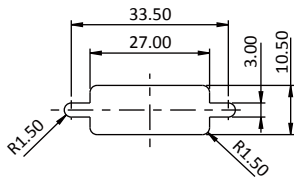
1	2	3	4	5	6	7	8	9	10
<b>Specification</b> (DIS) DVI-I Single Link                      (DDS) DVI-D Single Link (DID) DVI-I Dual Link                      (DDD) DVI-D Dual Link * For digital and analog, please choose DVI-I * For digital only, please choose DVI-D									
<b>Number of Contacts</b> 19, 23, 25, 29... Contacts e.g. 19 Pin = (19)									
<b>Connector Body (Style)</b> > For Receptacle                      > For Overmolded with Cable (P) Front Fastened                      (A) With Strain Relief									
<b>Connector (Housing) Gender</b> (M) Male                      (F) Female									
<b>Contact Gender</b> (M) Male                      (F) Female									
<b>Assemble Style</b> > For Receptacle                      > For Overmolded with Cable (S) Solder Type      (P) Front Fastened      (M) Overmolded with Cable									
<b>Mating Style</b> (S) Screw Thread									
<b>Backshell</b> > For Receptacle                      > For Overmolded with Cable (L) Straight / Without Board Lock      (L) Straight									
<b>Waterproof Rating</b> (7) IP 67 (8) IP 68									
<b>More Information</b> > For Receptacle                      > For Overmolded with Cable (001), (002).....                      (□)+(■) : Cable Type + Cable Length Without Cable : Different Versions                      e.g. (A01) = UL20276 Cable + 1M (□) : Cable Type                      (■) : Cable Length (A) UL20276                      From 1M to 5M 28AWG/PVC                      e.g. (01) = 1M									

# Physical Dimension

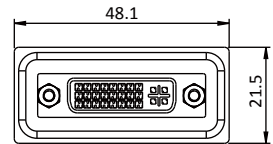
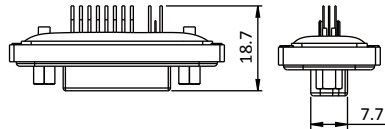
## Receptacle

Terminal: Solder Type

Panel Cut-Out

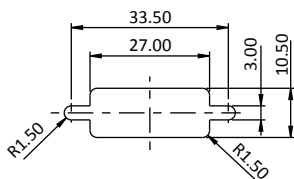


Connector Dimension

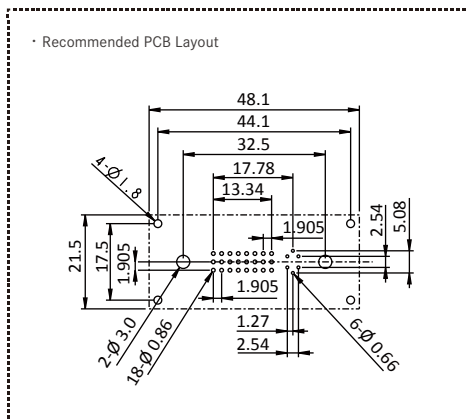
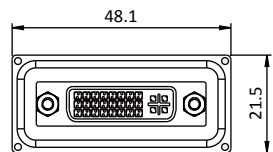
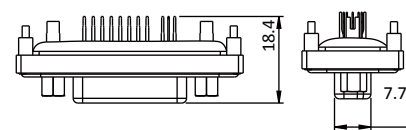


Terminal: PCB Type

Panel Cut-Out



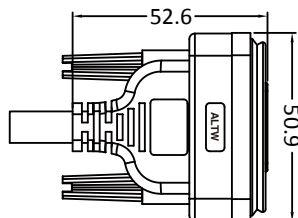
Connector Dimension



\* Unit: mm

\* The dimension is feasible for DVI-D Single Link(DDS), DVI-D Dual Link(DDD), DVI-D Single Link(DIS), and DVI-D Dual Link(DID)

## Overmolded with Cable

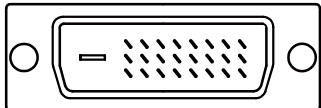
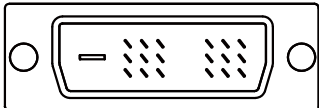
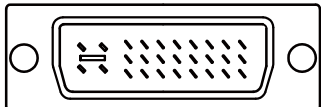
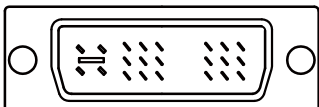


\* Unit: mm

\* The dimension is feasible for DVI-D Single Link(DDS), DVI-D Dual Link(DDD), DVI-D Single Link(DIS), and DVI-D Dual Link(DID)

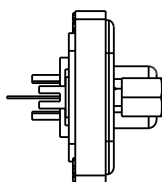
【Note】 Design and specification are subject to change without notice.

## Contact Configuration

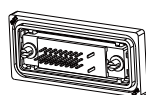
<p>DVI-D Dual Link (DDD)</p>  <p>25 Contacts</p>	<p>DVI-D Single Link (DDS)</p>  <p>19 Contacts</p>
<p>DVI-I Dual Link (DID)</p>  <p>29 Contacts</p>	<p>DVI-I Single Link (DIS)</p>  <p>23 Contacts</p>

## Product Features

### Receptacle



#### Backshell 8



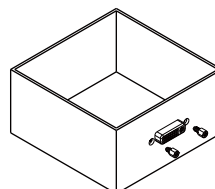
Straight (L)

#### Mating Style 7



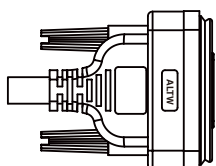
Screw Thread (S)

#### Connector Body(Style) 3

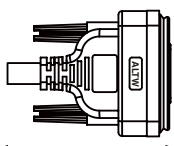


Front Fastened (P)

### Overmolded with Cable



#### Backshell 8



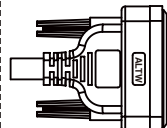
Straight  
(L)

#### Mating Style 7



Screw Thread (S)


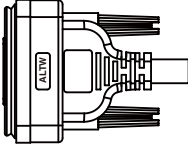
#### Connector Body(Style) 3



With Strain Relief (A)

## Find Our Standard Products

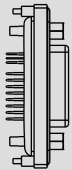
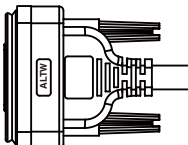
### Receptacle and Mating Pair

<ul style="list-style-type: none"> <li>• Female Connector (Housing)</li> <li>• Female Contacts</li> <li>• Screw Thread</li> <li>• Terminal: Solder Type</li> </ul>	Receptacle 	Overmolded with Cable 	Field Installable
Code	Female Connector (F) Female Contacts (F)	Male Connector (M) Male Contacts (M)	Male Connector (M) Male Contacts (M)
DVI-D Single Link (DDS)	DDS-19PFFS-SL8001	DDS-19AMMM-SL7AXX*	-
DVI-D Dual Link (DDD)	DDD-25PFFS-SL8001	DDD-25AMMM-SL7AXX*	-
DVI-I Single Link (DIS)	DIS-23PFFS-SL8001	DIS-23AMMM-SL7AXX*	-
DVI-I Dual Link (DID)	DID-29PFFS-SL8001	DID-29AMMM-SL7AXX*	-

【Note】 For digital and analog, please choose DVI-I  
For digital only, please choose DVI-D

\* XX: Choose UL20276 cable and select the cable length from 01~05m

### Receptacle and Mating Pair

<ul style="list-style-type: none"> <li>• Female Connector (Housing)</li> <li>• Female Contacts</li> <li>• Screw Thread</li> <li>• Terminal: PCB Type</li> </ul>	Receptacle 	Overmolded with Cable 	Field Installable
Code	Female Connector (F) Female Contacts (F)	Male Connector (M) Male Contacts (M)	Male Connector (M) Male Contacts (M)
DVI-D Single Link (DDS)	DDS-19PFFP-SL8001	DDS-19AMMM-SL7AXX*	-
DVI-D Dual Link (DDD)	DDD-25PFFP-SL8001	DDD-25AMMM-SL7AXX*	-
DVI-I Single Link (DIS)	DIS-23PFFP-SL8001	DIS-23AMMM-SL7AXX*	-
DVI-I Dual Link (DID)	DID-29PFFP-SL8001	DID-29AMMM-SL7AXX*	-

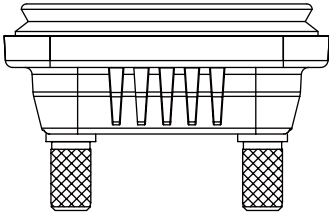
【Note】 For digital and analog, please choose DVI-I  
For digital only, please choose DVI-D

\* XX: Choose UL20276 cable and select the cable length from 01~05m

【Note】 Design and specification are subject to change without notice.

Accessories

Waterproof Cap

<div>Customized – Upon Request</div> <div></div>				
Type	Mating Pairs	Mating Style	Mating Pair (Gender)	P/N
DVI	Receptacle	Screw Thread	Male & Female	CAP-WDVCSPA1



---

**Amphenol LTW Technology Co., Ltd.**

5F-3, No.51, Sec.4, Zhongyang Rd., Tucheng Dist., New Taipei City 236, Taiwan  
Telephone: +886-2-77416888 Fax: +886-2-77416999  
[www.amphenolltw.com](http://www.amphenolltw.com)

**Kunshan Factory**

No. 62, DaTong Road, Development Zone, Kunshan City, JiangSu Province, 215333 China  
Telephone: +86-512-5761-0501  
Fax: : +86-512-5761-0515

**For further information, please contact :**

Sales & Marketing Department | Email : [sales@ltw-tech.com](mailto:sales@ltw-tech.com)