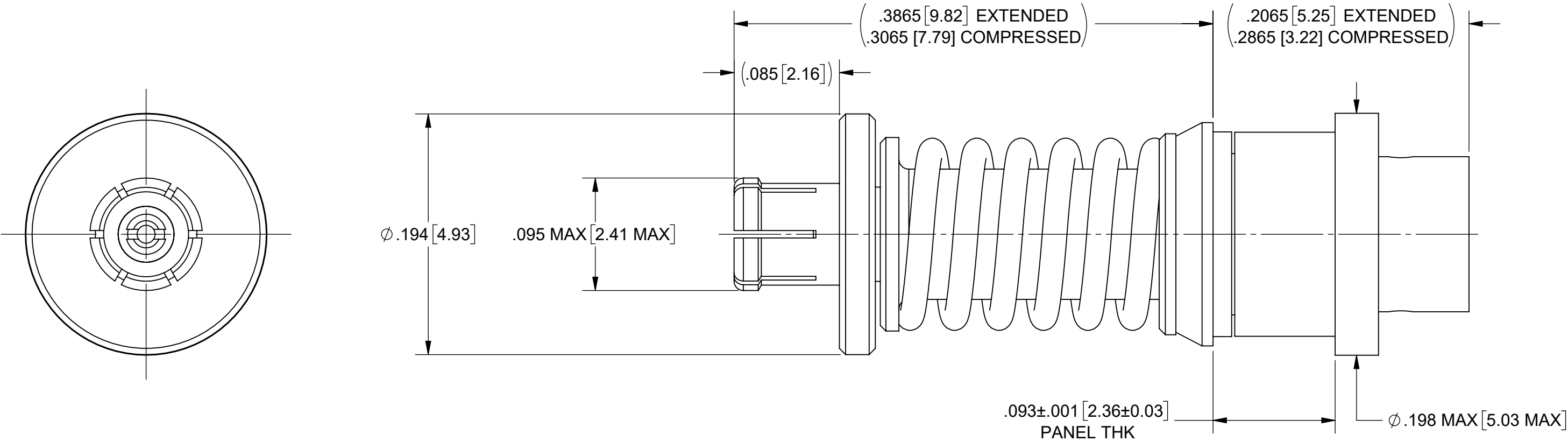


PRODUCT DATA DRAWING

REVISION HISTORY			
REV	DESCRIPTION	DATE	APPROVED
-	NRN 41286	02/17	SEE PDM
A	DCN 47834	08/18	
B	DCN 51561	04/22	



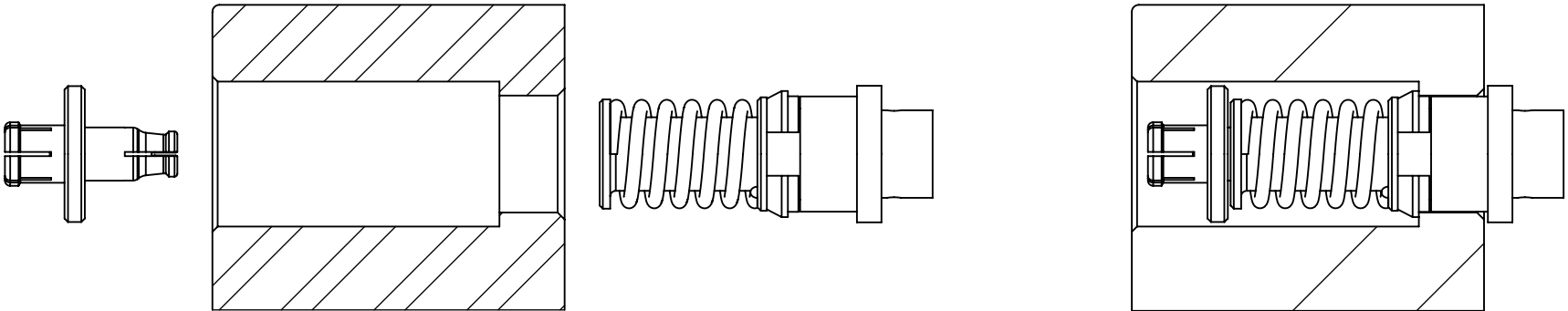
MATERIAL:

BODIES & CONTACTS:	BERYLLIUM COPPER PER ASTM B196, ALLOY No. UNS C17300, TD04
INSULATORS:	PTFE PER ASTM D1710, TYPE I, GRADE 1, CLASS B
SPRING & SLEEVE:	STAINLESS STEEL PER AMS-5678, ALLOY UNS S17700
FINISH:	
BODIES & CONTACTS:	GOLD PER ASTM B488, TYPE II, CODE C, CLASS 1.27, OVER NICKEL PER AMS-QQ-N-290, CLASS 1, .00005" MIN.
SPRING:	PASSIVATED PER ASTM A967

PERFORMANCE:

IMPEDANCE:	50 OHMS
FREQ. RANGE:	DC TO 40.0 GHz.
VSWR:	1.40:1 MAX, DC TO 40.0 GHz.
INSERTION LOSS:	.65 dB MAX, DC TO 40.0 GHz.
OPERATING TEMP.:	-65 °C TO +165 °C

FOR USE IN VITA 67.3 BACKPLANE MODULE
REMOVAL TOOL P/Ns 500-32-007, 500-32-015, & 500-32-034



MATERIAL:	SEE NOTES	DIMENSIONS ARE IN INCHES TOLERANCES: FRACTIONAL: ±1/64 ANGULAR: X° ±1°0'
-----------	-----------	---