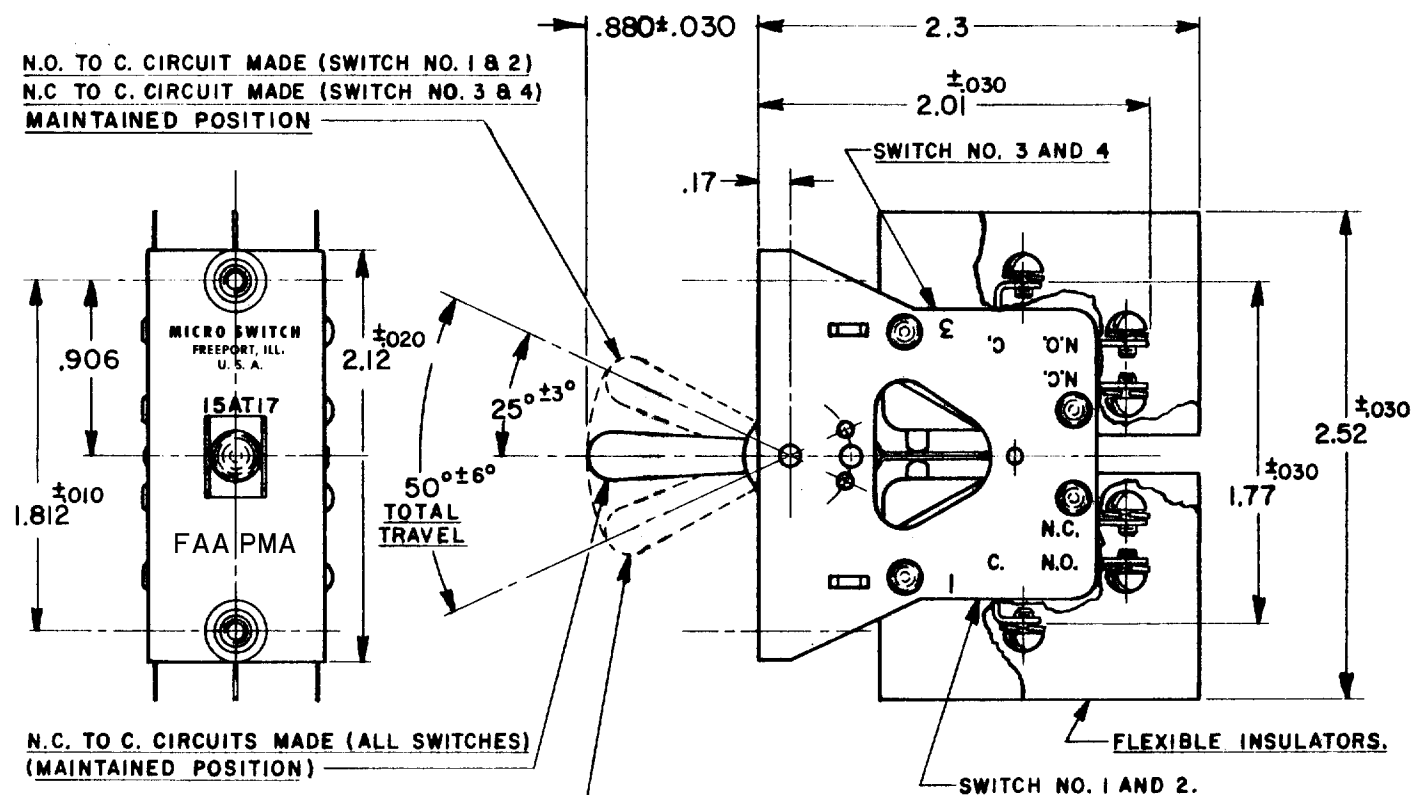
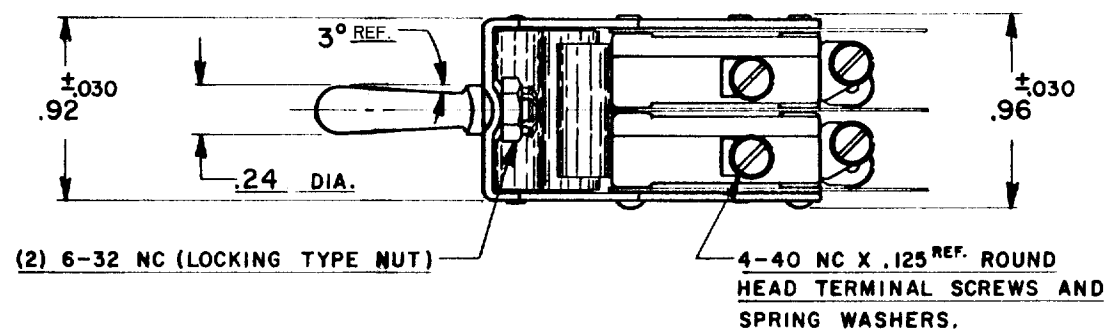


HONEYWELL
PART NUMBER


15AT17

FAA - PMA 

REV	DOCUMENT	CHANGED BY	CHECK
6	0007403	KR 24AUG04	AK



NOTES

- UNIT INCLUDES (4) CAT. LIST. V3-444 BASIC SWITCHES
 - SWITCHES DO NOT NECESSARILY OPERATE SIMULTANEOUSLY.
 - SAME AS 15AT1 EXCEPT WITH THE BASIC SWITCH NO. (.156 ± .030 HIGH) MARKED ON SIDE OF BRACKET
-  FOR MANUFACTURING DETAIL SEE ASSEMBLY DRAWING 15AT17 FOR FAA-PMA

REPLACES SKETCH 20159 ISSUE 1

ELECTRICAL DATA	
CONTACT ARRANGEMENT	BREAK DISTANCE
(4) S.P.D.T.	.040 APPROX.
15 A-1/3 HP-125 OR 250 VAC 1/2 A-125 VDC; 1/4 A-250 VDC	

DESIGN UNITS: INCH
TOLERANCES UNLESS NOTED:

NO PLACE	X	±	
ONE PLACE	.X	±	0.030
TWO PLACE	.XX	±	0.015
THREE PLACE	.XXX	±	0.005
FOUR PLACE	.XXXX	±	
ANGLES		±	

THIRD ANGLE PROJECTION



DRAWN	MBF	20JUN58
CHECK	GCH	23SEP58
THIS DRAWING COVERS A PROPRIETARY ITEM AND IS THE PROPERTY OF HONEYWELL. THIS DRAWING IS NOT TO BE COPIED OR USED WITHOUT THE PERMISSION OF HONEYWELL.		
INTERPRET PER ASME Y14.5M-1994 OTHER HONEYWELL ENGINEERING STANDARDS MAY APPLY		
RASTER		

Honeywell

TITLE

ASSEMBLY - TOGGLE SWITCH

SIZE	TYPE	DRAWING NAME	REV
B	I	15AT17	6
SCALE	1:1	SHEET	1 OF 1