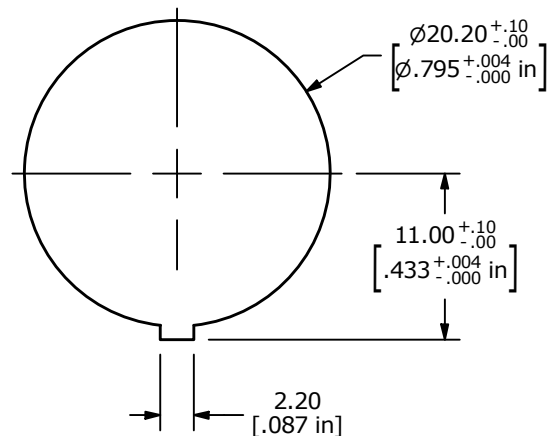
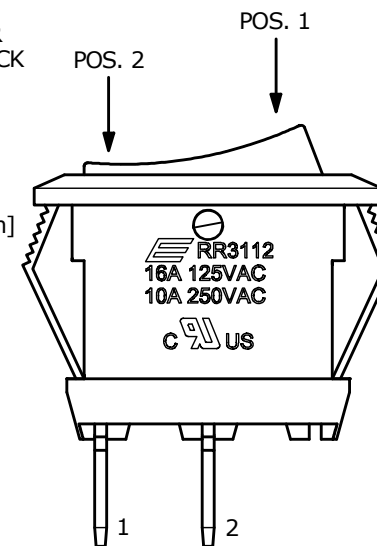
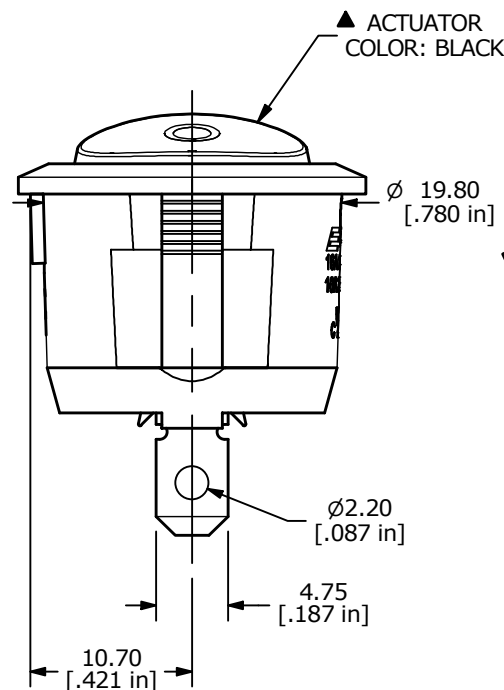
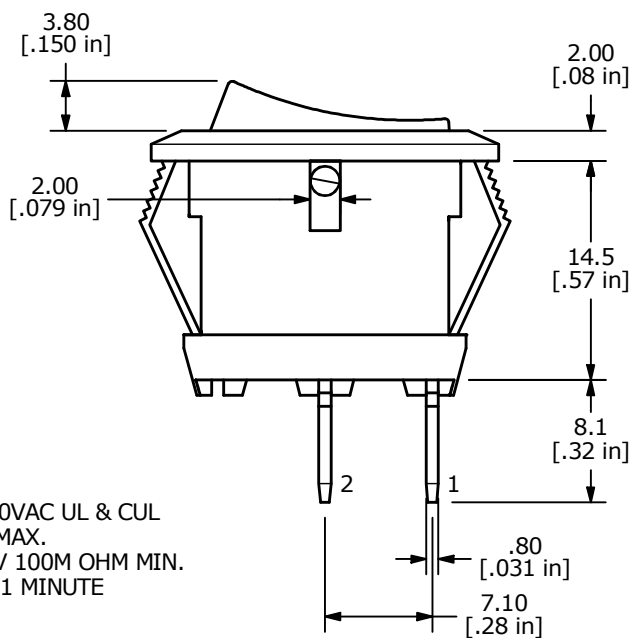
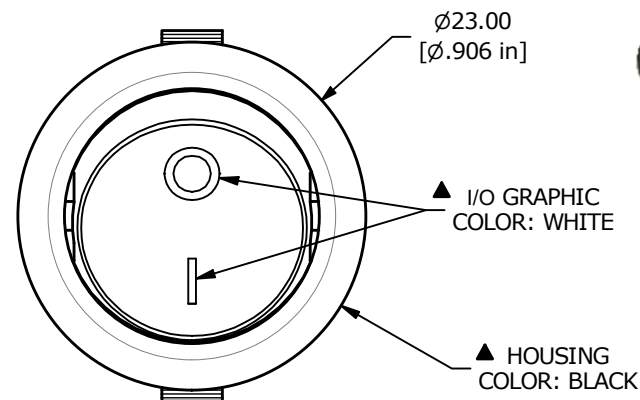


SWITCH FUNCTION	
POS. 1	POS. 2
(ON)	OFF
2-1	OPEN

(ON) = MOMENTARY

CIRCUIT: SPST
(MOMENTARY)RECOMMENDED
PANEL MOUNTING

NOTES:

1. ALL DIMENSIONS IN MM [INCH]
2. GENERAL TOLERANCE: x.x = ± 0.4
x.xx = ± 0.25
3. TERM. NUMBERS FOR REF. ONLY
4. RATING: 16A @ 125VAC, 10A @ 250VAC UL & CUL
5. CONTACT RESISTANCE: 50m OHM MAX.
6. INSULATION RESISTANCE: DC 500V 100M OHM MIN.
7. DIELECTRIC STRENGTH: AC 1500V 1 MINUTE
8. OPERATING TEMP: -20°C to 85°C
9. PANEL THICKNESS: 3.0mm MAX.
10. ▲ DENOTES CRITICAL PARAMETER

REV	ECO NO	DESCRIPTION	DATE	BY	E-SWITCH®				OBJECT ID
A	ECO-100558	Release	11/24/21	MW	TITLE RR3112FBLKBLKNFF0				100120068
					SCALE	DATE	DR	DWG	REV
					2:1	10/26/2021	MW	F130466	A

THE INFORMATION CONTAINED IN THIS DOCUMENT IS PROPRIETARY TO
E-SWITCH AND IS NOT TO BE COPIED OR TRANSFERRED