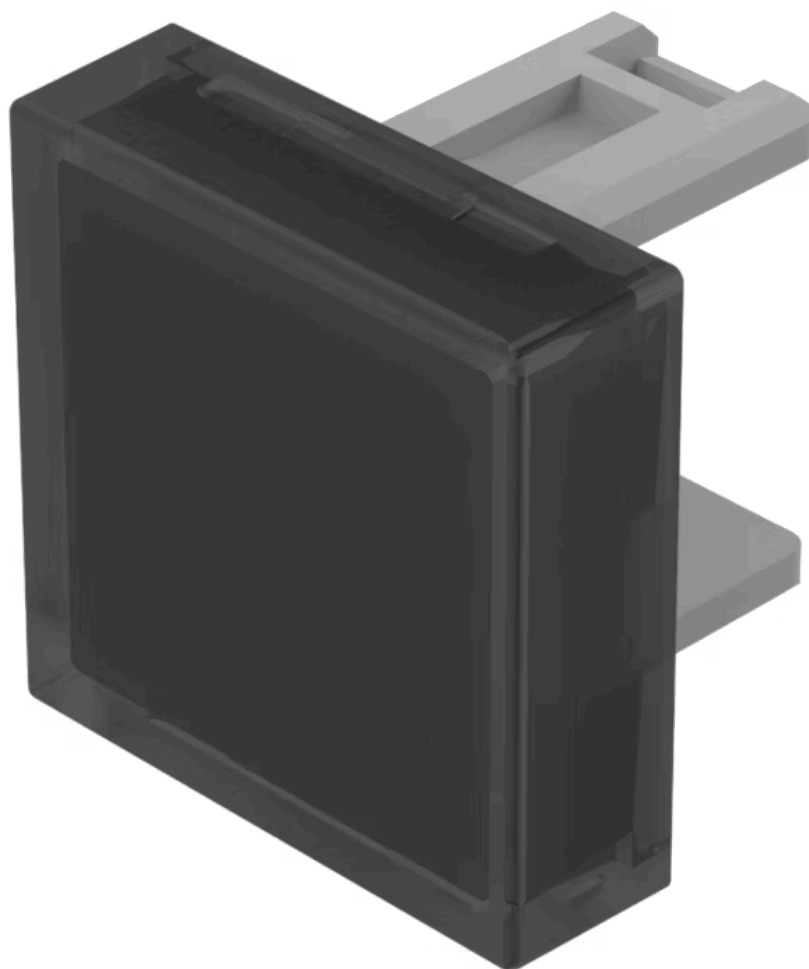


Lens

31-
953.1



<https://eao.com/p/31-953.1>

Your product:



31-953.1 Lens

OPERATING-/INDICATION PART

Lens material:	Plastic
Lens colour:	Smokey black
Lens optics:	transparent
Lens shape:	flush
Lens illumination:	illuminative

MECHANICAL CHARACTERISTIC

Weight:	0.001 kg
----------------	----------

OTHER

Dimension:	15.3 mm x 15.3 mm
Short Description:	Lens, 15.3 mm x 15.3 mm, illuminative, Smokey black, flush, Plastic