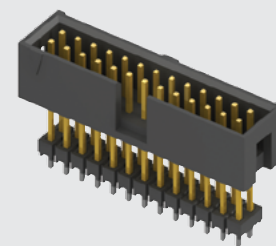


HTST-125-01-L-DV



(2.54 mm) .100"

TST, HTST, ZST SERIES

# SHROUDED .025" SQ POST IDC HEADERS

Mates with:  
IDSD, SMSD

## SPECIFICATIONS

For complete specifications  
www.samtec.com?TST,  
www.samtec.com?HTST or  
www.samtec.com?ZST

### Insulator Material:

TST, ZST: Black Glass

Filled Polyester

HTST: Natural LCP

### Insulation Resistance:

5000 MΩ min

### Terminal Material:

Phosphor Bronze

Plating: Au or Sn over

50 μ" (1.27 μm) Ni

### Current Rating (IDSD/TST):

3.4 A per pin

(1 pin powered per row)

### Operating Temp Range:

-55 °C to +125 °C with Gold

-55 °C to +105 °C with Tin

### Flammability Rating: UL 94V-0

### Withstanding Voltage:

1000 VRMS

### RoHS Compliant: Yes

### Processing:

Lead-Free Solderable:

HTST: Yes

TST, ZST: Wave Only

### SMT Lead Coplanarity:

(0.10 mm) .004" max (05-15)

(0.15 mm) .006" max (17-36)

TYPE STRIP

1

NO. PINS PER ROW

LEAD STYLE

PLATING OPTION

ROW OPTION

OTHER OPTION

TST  
= Cable StripHTST  
= High Temp  
Cable Strip

05, 07, 08, 10,  
12, 13, 15, 17,  
20, 25, 32, 36  
(Standard sizes.)

Specify  
LEAD  
STYLE  
from  
chart.

—F  
= Gold flash on post,  
Matte Tin on tail  
(Not available on -DV)

—L  
= 10 μ" (0.25 μm)  
Gold on post,  
Matte Tin on tail

—T  
= Matte Tin

—D  
= Double Row  
Through-hole  
(lead style -01,  
-02 & -03 only)

—DV  
= Double Row  
Surface Mount  
(lead style  
-01 only)  
(HTST only)

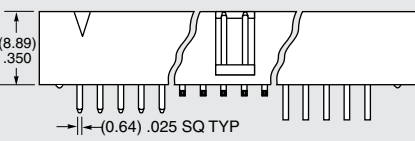
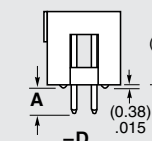
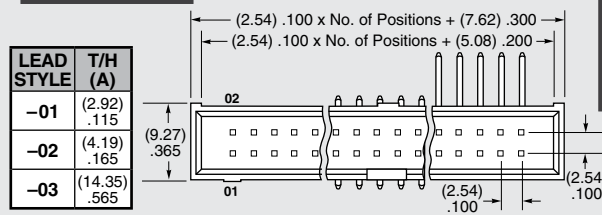
—D-RA  
= Double Row  
Right-angle  
(lead style -04  
& -05 only)

Surface  
Mount  
(lead style  
-01 only)  
(HTST only)

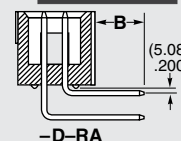
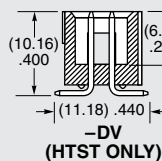
—P  
= Pick &  
Place Pad

—TR  
= Tape  
& Reel  
Packaging

LEAD STYLE	T/H (A)
-01	(2.92) .115
-02	(4.19) .165
-03	(14.35) .565



LEAD STYLE	RIGHT-ANGLE (B)
-04	(3.30) .130
-05	(5.84) .230



## RECOGNITIONS

For complete scope of  
recognitions see  
www.samtec.com/quality



FILE NO. E111594

## OTHER SOLUTIONS

- Shrouded board-to-board headers and stackers to mate with SSW, SSQ, ESW, ESQ, SSM and BCS Series. See TSS, HTSS and ZSS Series.

## ALSO AVAILABLE (MOQ Required)

- Other platings & sizes
- Alignment Pins
- Single Row
- Locking Leads
- Polarized
- Contact Samtec.

**Note:** Some lengths, styles and options are non-standard, non-returnable. ZST is non-standard, non-returnable.

ZST

1

NO. PINS PER ROW

LEAD STYLE

PLATING OPTION

D

BODY HEIGHT

05, 07, 08, 10, 12, 13,  
15, 17, 20, 25, 32, 36  
(Standard sizes.)

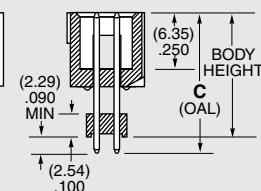
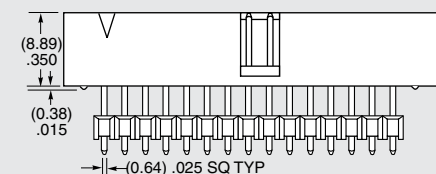
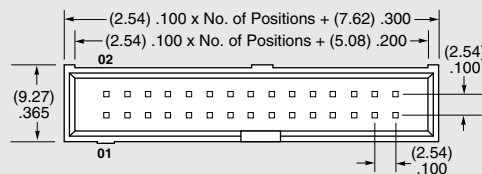
Specify  
LEAD  
STYLE  
from  
chart.

—F  
= Gold flash on post,  
Matte Tin on tail

—L  
= 10 μ" (0.25 μm)  
Gold on post,  
Matte Tin on tail

—T  
= Matte Tin

—“XXXX”  
= Body Height



LEAD STYLE	C (OAL)	MAX BODY HEIGHT
-01	(16.00) .630	(13.72) .540
-02	(18.54) .730	(16.26) .640
-03	(21.08) .830	(18.80) .740
-04	(23.62) .930	(21.34) .840
-05	(26.16) 1.030	(23.88) .940
-06	(28.70) 1.130	(26.42) 1.040
-07	(31.24) 1.230	(28.96) 1.140
-08	(33.78) 1.330	(31.50) 1.240
-09	(36.32) 1.430	(34.04) 1.340

**Note:** For added mechanical stability, Samtec recommends mechanical board spacers be used in applications with gold or selective gold plated connectors. Contact ipg@samtec.com for more information.