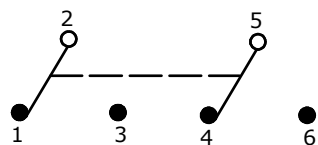


PCB LAYOUT

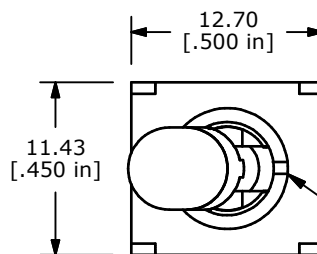
SWITCH FUNCTION		
POS. 1	POS. 2	POS. 3
ON	NONE	ON
2-3, 5-6	OPEN	2-1, 5-4



CIRCUIT DIAGRAM: DPDT

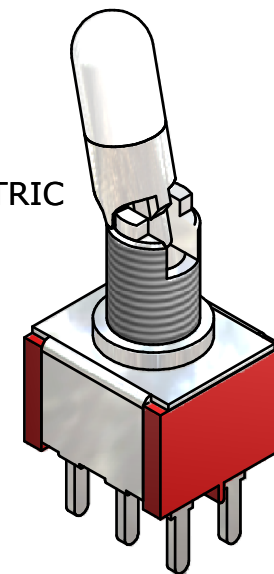
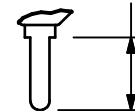
NOTE:

1. ALL DIMENSIONS IN mm [INCH]
2. GENERAL TOLERANCE: X.X=±0.4
X.XX=±0.25
3. TERMINAL NUMBERS FOR REF ONLY
- ▲ 4. PLATING MATERIAL: SILVER
5. RATING: 5A 120VAC; 2A 250VAC
6. ELECTRIC LIFE: 40,000 MAKE-AND-BREAK CYCLES AT FULL LOAD.
7. INSULATION RESISTANCE: 1,000 MEGA-OHM MIN.
8. DIELECTRIC STRENGTH: 1,000 V RMS @SEA LEVEL.
9. OPERATING TEMP.: -30°C to 85°C
10. ▲ DENOTES CRITICAL PARAMETER.
11. 2002/95/EC (ROHS) COMPLIANT

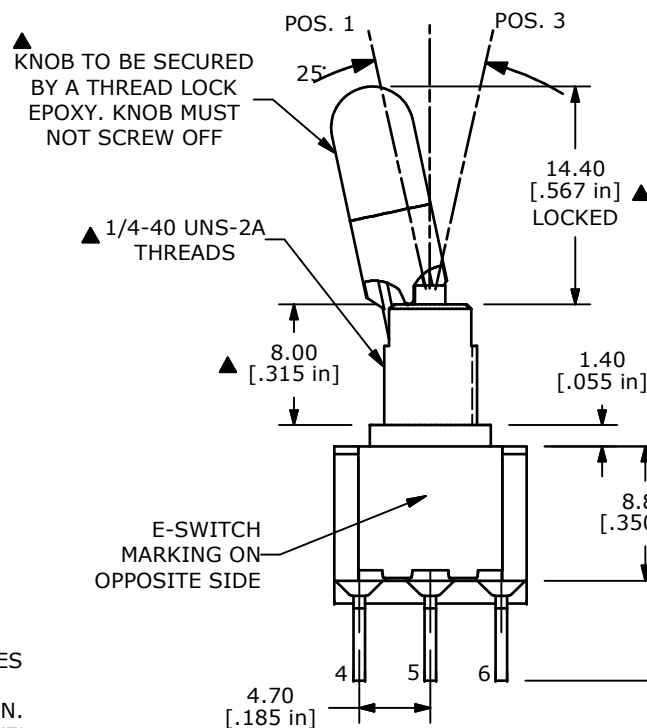


KEYWAY

ISOMETRIC

4.79
[.189 in]

DETAIL A

Ø 5.44
[.214 in]1.52
[.060 in]8.89
[.350 in]15.51
[.611 in]

EPOXY SEAL



TITLE 100DP1K1B25M2QE

B	20602	CHANGED RATING 2A WAS 3A	05/10/12	drg
A	20549	RELEASED FOR PRODUCTION	04/05/12	rc
REV	PCR NO	DESCRIPTION	DATE	BY

THE INFORMATION CONTAINED IN THIS DOCUMENT IS PROPRIETARY
TO E-SWITCH AND IS NOT TO BE COPIED OR TRANSFERRED

DATE
4/5/2012DR
rcDWG
T121083REV
B