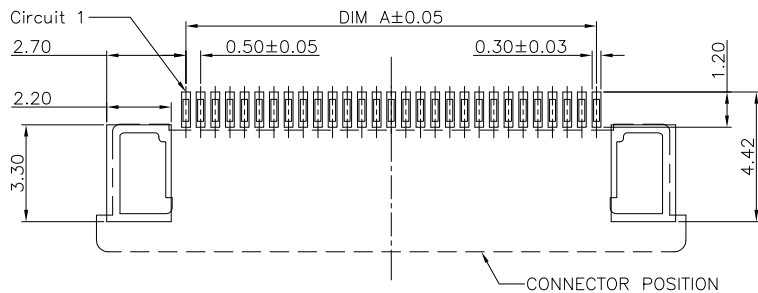
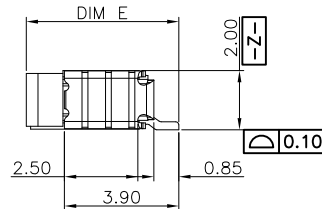
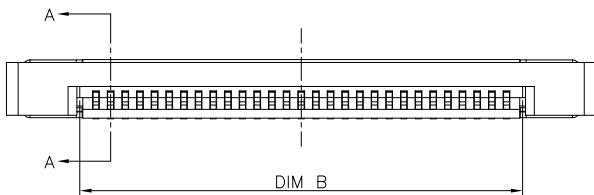
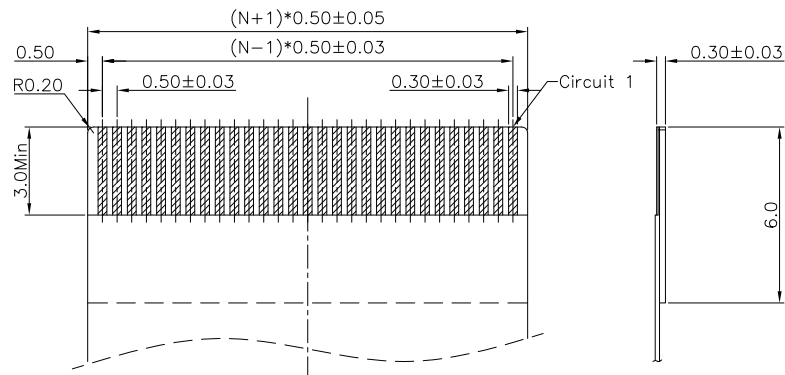


SECTION A-A
SCALE 1:1



RECOMMENDED P.C.B. PATTERN LAYOUT

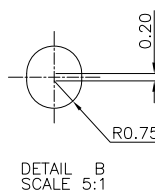


RECOMMENDED FPC/FFC DIMENSION

- Note:
- Material:
 - Housing: thermoplastic high temp.UL94V-0; Color: natural.
 - Latch: thermoplastic high temp.UL94V-0; Color: black.
 - Terminal: copper alloy.
 - Fitting Nail: copper alloy.
 - Finish:
 - Terminal:
Underplating: Au/matt Tin overall.
 - Fitting Nail:
Underplating: matt Tin overall.
 - Product must comply HF RoHS specification.
 - Product No:
AFC07-S ** F * * - **
CKTS CONTACTS TYPE F:Lower
PLATING
1:Gold flash 1u"
2:Gold flash 2u"
3:Gold flash 3u"
B:Bright-Tin 90-120u"
C:Matt-Tin 90-120u"
PACKING
A:Tape&Reel
C:Tube
REMARKS
HF:Halogen free

CKTS	DIM A	DIM B	DIM C	DIM D	DIM E	DIM F
4	1.50	2.60	6.50	7.60		
5	2.00	3.10	7.00	8.10		
6	2.50	3.60	7.50	8.60		
7	3.00	4.10	8.00	9.10		
8	3.50	4.60	8.50	9.60		
9	4.00	5.10	9.00	10.10		
10	4.50	5.60	9.50	10.60		
11	5.00	6.10	10.00	11.10		
12	5.50	6.60	10.50	11.60		
13	6.00	7.10	11.00	12.10		
14	6.50	7.60	11.50	12.60		
15	7.00	8.10	12.00	13.10		
16	7.50	8.60	12.50	13.60		
17	8.00	9.10	13.00	14.10		
18	8.50	9.60	13.50	14.60		
19	9.00	10.10	14.00	15.10	5.20	6.45
20	9.50	10.60	14.50	15.60		
21	10.00	11.10	15.00	16.10		
22	10.50	11.60	15.50	16.60		
23	11.00	12.10	16.00	17.10		
24	11.50	12.60	16.50	17.60		
25	12.00	13.10	17.00	18.10		
26	12.50	13.60	17.50	18.60		
27	13.00	14.10	18.00	19.10		
28	13.50	14.60	18.50	19.60		
29	14.00	15.10	19.00	20.10		
30	14.50	15.60	19.50	20.60		
31	15.00	16.10	20.00	21.10		
32	15.50	16.60	20.50	21.60		
33	16.00	17.10	21.00	22.10		
34	16.50	17.60	21.50	22.60		
35	17.00	18.10	22.00	23.10		
36	17.50	18.60	22.50	23.60		
37	18.00	19.10	23.00	24.10		
38	18.50	19.60	23.50	24.60		
39	19.00	20.10	24.00	25.10		
40	19.50	20.60	24.50	25.60		
41	20.00	21.10	25.00	26.10		
42	20.50	21.60	25.50	26.60		
43	21.00	22.10	26.00	27.10		
44	21.50	22.60	26.50	27.60		
45	22.00	23.10	27.00	28.10		
46	22.50	23.60	27.50	28.60		
47	23.00	24.10	28.00	29.10		
48	23.50	24.60	28.50	29.60		
49	24.00	25.10	29.00	30.10		
50	24.50	25.60	29.50	30.60		
51	25.00	26.10	30.00	31.10		
52	25.50	26.60	30.50	31.60		
53	26.00	27.10	31.00	32.10		
54	26.50	27.60	31.50	32.60		
55	27.00	28.10	32.00	33.10		
56	27.50	28.60	32.50	33.60		
57	28.00	29.10	33.00	34.10		
58	28.50	29.60	33.50	34.60		
59	29.00	30.10	34.00	35.10		
60	29.50	30.60	34.50	35.60		

CUSTOMER DRAWING		浙江创都电子科技有限公司	
Tolerance Unspecified (未注公差)	Size(图幅): A4	Product Name(产品名称):	
0.0 ±0.15 0° ±5°	Unit(单位): MM	0.5Pitch H=2.0 FPC ZIF R/A Type3 Lower SMT CONN	
0.00 ±0.10 0° 0 ±3°	Scale(比例): 1:1	Product No(产品料号):	
0.000 ±0.05 0° 00 ±1°		CAX-AFC07- **XCB-H2.0	
Project View (投影视角)	Page(页数): 1 OF 1	Designer(设计):	Checked(审核):
	Rev(版本): A	Allan	Approved(核准):



-
- Technical drawing of a plate with four rectangular holes. The plate width is 120. The distance between the centers of the holes is 40. The distance from the left edge to the center of the first hole is 20. The distance from the top edge to the center of the holes is 1.75 ± 0.10 . The hole diameter is $\phi 1.50^{+0.10}_{-0.00}$. The plate thickness is 2.8. The label '单边孔' (Single Edge Hole) is present.

CLASSIFICATION DIMENSION(尺寸类别): FAI(首次检验): <input type="radio"/> To <input checked="" type="radio"/> <input checked="" type="checkbox"/> "MARK IS MAJOR DIM(重点尺寸标示)" <input type="checkbox"/> "MARK IS CRITICAL DIM(Cpk/Cp标示)"		浙江创都电子科技有限公司	
Tolerance Unspecified (未注公差) 0.0 ±0.10 0° ±3° 0.00 ±0.05 0° 0 ±2° 0.000 ±0.02 0° 00 ±1°			
Size(图幅): A4		Product Name(产品名称): 0.5Pitch H=2.0 FPC 拉拔卧式3代SMT型. 载带	
Unit(单位): MM		Product No(产品料号): EB-595XXX230-00	
Scale(比例): 1 : 1		Drawing No(图面编号): DNE00013-1	Date(日期): 2011/05/05
Project View (投影视角) 		Designer(设计): Allan	Checked(审核): Approved(核准):
Page(页数): 1 OF 1 Rev(版本): 1.0			