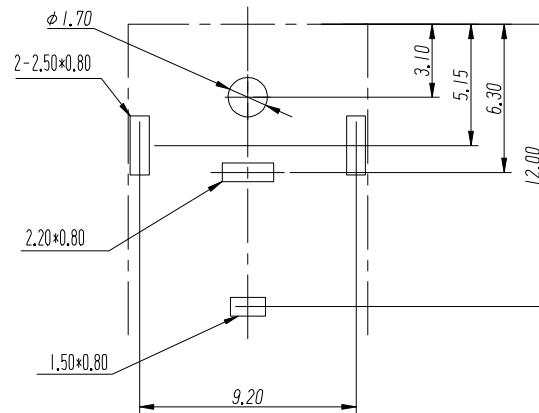
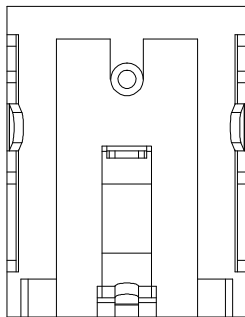
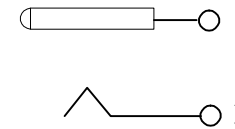


PCB LAYOUT
TOP VIEW (TOLERANCE:±0.05)



SCHEMATIC



技术特性:

使用条件: -30~70°

额定负荷: DC30V 10A

接触电阻: ≤0.02Ω

绝缘电阻: ≥100mΩ DC250V

耐压: AC250V(50Hz)/min

插拔力: 3~15N

寿命: 5000次

5	平片	1	磷铜0.65 δ=0.50mm	D. Cu/Sn
4	插针PIN	1	H59黄铜棒(Y)	D. Cu/Sn
3	外壳	1	H62黄铜带 δ=0.4mm	D. Cu/Sn
2	弹片	1	磷铜0.65 δ=0.30mm	D. Sn/Sb
1	底座	1	PA9T	黑
序号	名称	数量	材料	备注

GENERAL TOLERANCES			
0.X	±0.30	X°	±3°
0.XX	±0.20		
0.XXX	±0.10	X.X°	±1°
UNIT	SIZE	SCALE	
MM	A4	1:1	

DRAWN		C	TITLE: 电源插座
DESIGN			PART NO. DC-0102-10A-**-9T
CHECKED			PRODUCT NO.
APPROVED			DRAWING NO.
UNIT: mm SCALE: 1:1 REV: 01-1 SHT: 10F1			

浙江创都电子科技有限公司

ECN NO.	REV	DATE	DESCRIPTION	MDF'D	APP'D
	01	2022.04.26	NEW DRAWING RELEASE		