

RoHS & Halogen Free & REACH Compliance.

## SPECIFICATION FOR APPROVAL

Customer :

Customer P/N:

Drawing No :

C3X2301284

Quantity :

X

Pcs.

Date :

2023/9/14

P/N :

MHCB06040-R15M-C1R667

### SPECIFICATION ACCEPTED BY:

COMPONENT  
ENGINEER

ELECTRICAL  
ENGINEER

MECHANICAL  
ENGINEER

APPROVED

REJECTED

奇力新電子股份有限公司

Chilisin Electronics Corp  
No. 270, Nanfeng Rd., Pingzhen Dist.,  
Taoyuan City 324, Taiwan (R.O.C.)  
TEL : +886-3-415-9111  
FAX : +886-3-419-5522  
E-mail : sales@chilisin.com  
http : //www.chilisin.com

東莞奇力新電子(東莞廠)有限公司

Chilisin Electronics (Dongguan) Co., Ltd.  
No. 78, Puxing Rd., Yuliangwei Administration Area,  
Qingxi Town, Dongguan City,  
Guangdong, China  
TEL : +86-769-8773-0251~3  
FAX : +86-769-8773-0232  
E-mail : cect@chilisin.com

奇力新電子(越南廠)有限公司

Chilisin Electronics (Vietnam) Limited  
No 143 - 145, Road No 10, VSIP Hai Phong,  
Lap Le Commune, Thuy Nguyen Dist,  
Haiphong City, Vietnam  
TEL : 84-316 255 688 FAX : 84-316 255 689

奇力新電子(湖南廠)有限公司

HuNan Chilisin Electronics Technology Co., Ltd  
No. 8, Shaziao Liangshuijing Town, Yuanling County,  
Huaihua City, Hunan Province  
419601, China  
TEL : 86-745-867-5882  
E-mail : cect@chilisin.com

Drawn by  
蔡世傑 Ryan Tsai

Checked by  
吳韋邑 Wayne Wu

Approved by  
鍾尚樺 Mark Chung

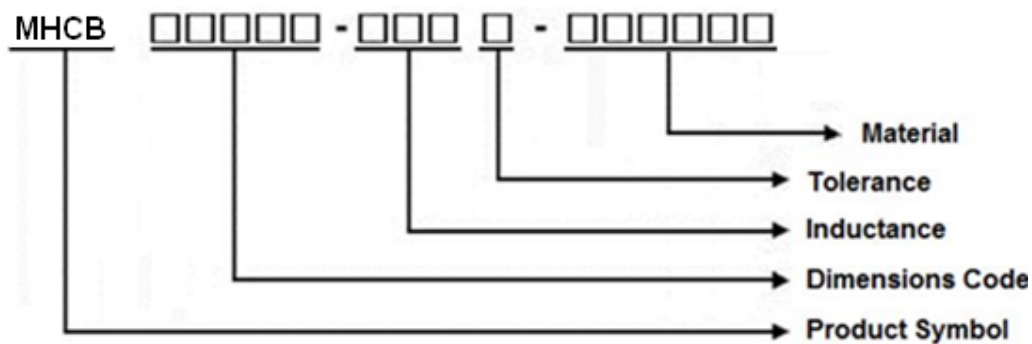
## REVISIONS

[illegible]

## MHCB06040 Series Specification

**1 Scope:** This specification applies to Large current and Low Loss SMD Power INDUCTOR

**2 Part Numbering:**

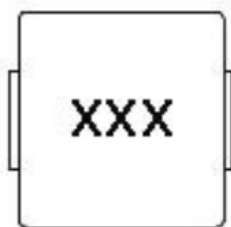


**3 Rating:**

Operating Temperature: - 55°C ~ 125°C

Storage Temperature: (on tape & reel): -20°C to +40°C; 75% RH max.

**4 Marking:**



Marking : R15

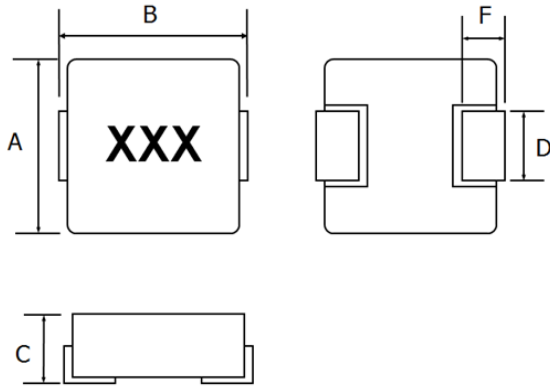
Marking color : Black

**5 Standard Testing Condition**

	Unless otherwise specified	In case of doubt
Temperature	Ordinary Temperature(15 to 35°C)	20 to 30°C
Humidity	Ordinary Humidity(25 to 85% RH)	50 to 80 %RH

## MHCB06040 Series Specification

### 6 Configuration and Dimensions:



Dimensions in mm

TYPE	MHCB06040
A	$6.8 \pm 0.2$
B	$7.2 \pm 0.3$
C	$3.8 \pm 0.2$
D	$3.0 \pm 0.5$
F	$1.6 \pm 0.5$

### 7 Electrical Characteristics:

Part No.	Inductance ( $\mu\text{H}$ )	Tolerance ( $\pm\%$ )	Test Freq.	I <sub>rms</sub> (A) Typ	I <sub>sat</sub> (A) Typ	RDC( $\text{m}\Omega$ ) $\pm 7\%$	Marking
MHCB06040-R15M-C1R667	0.15	20	100kHz, 0.5V	36	45	0.66	R15

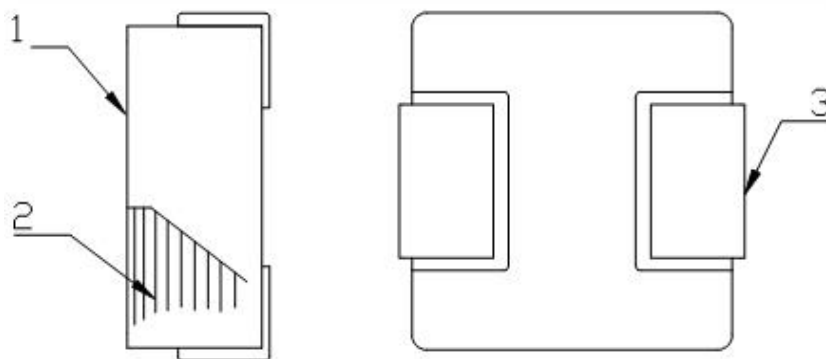
#### Note:

- Operating temperature range  $-55^{\circ}\text{C} \sim 125^{\circ}\text{C}$
- I<sub>sat</sub> for Inductance drop 30% from its value without current.
- I<sub>rms</sub> for a  $40^{\circ}\text{C}$  temperature rise from  $25^{\circ}\text{C}$  ambient.
- The part temperature (ambient + temp rise) should not exceed  $125^{\circ}\text{C}$  under worst case operating conditions.  
Circuit design  $125^{\circ}\text{C}$  under worst case operating conditions. Component placement, PWB trace size and thickness, airflow and other cooling provisions all affect the part temperature. Part temperature should be verified in the end application.
- Absolute maximum voltage 30VDC (Based on test method, it may not the same under different application, it is recommended to verify first.)

## MHCB06040 Series Specification

### 8 MHCB06040 Series

#### 8.1 Construction:



#### 8.2 Material List:

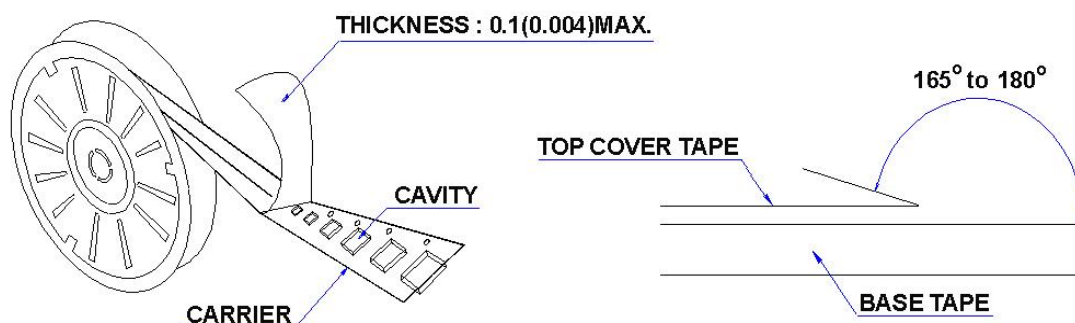
ITEM	PART	DESCRIPTION
1	CORE	Magnetic Metal Powder
2	WIRE	Copper wire
3	TERMINAL	TERMINAL COPPER

## MHCB06040 Series Specification

### 9 PACKAGING

#### 9.1 Packaging -Cover tape

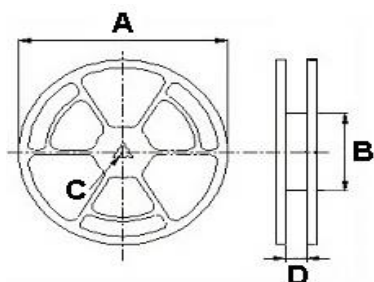
The force for tearing off cover tape is 10 to 130 grams in the arrow direction.



#### 9.2 Packaging Quantity

TYPE	PCS/REEL
MHCB06040	1000

#### 9.3 Reel Dimensions



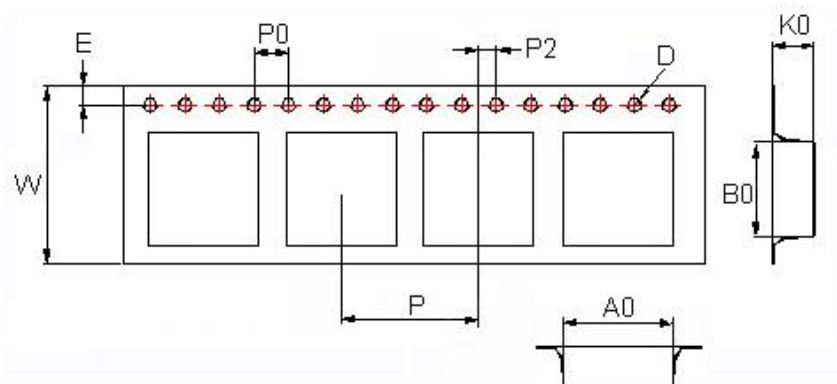
Dimensions in mm

TYPE	A	B	C	D
MHCB06040	330	100	13	16

## MHCB06040 Series Specification

### 9 PACKAGING

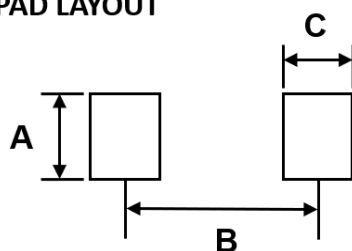
#### 9.4 Tape Dimensions in mm



TYPE	A0	B0	K0	D	E	W	P	P0	P2
MHCB06040	7.15	7.6	4.4	1.55	1.75	16	12	4	2

### 10 Recommended Pattern

#### PAD LAYOUT



#### Dimensions in mm

TYPE	A(mm)	B(mm)	C(mm)
MHCB06040	3.5	6.05	2.35

### 11 Note:

- Please make sure that your product has been evaluated and confirmed against your specifications when our product is mounted to your product.
- Do not knock nor drop.
- All the items and parameters in this product specification have been prescribed on the premise that our product is used for the purpose, under the condition and in the environment agreed upon between you and us. You are requested not to use our product deviating from such agreement.
- Please keep the distance between transformer/coil and other components (refer to the standard IEC 950)
- The moisture sensitivity level (MSL) of products is classified as level 1.

## MHCB06040 Series Specification

**12** Graph:

