



Type Number	SYMBOL	SF31	SF32	SF33	SF34	SF35	SF36	SF37	SF38	Umit
Maximum Recurrent Peak Reverse Voltage	V _{RRM}	50	100	150	200	300	400	500	600	V
Maximum RMS Voltage	V _{RMS}	35	70	105	140	210	280	350	420	V
Maximum DC Blocking Voltage	V _{DC}	50	100	150	200	300	400	500	600	V
Maximum Average Forward Rectified Current	IO(AV)	3.0								A
Peak Forward Surge Current 8.3ms Single half-sine-wave superimposed on rated load(JEDEC Method) on rated	IFSM	80.0								A
Forward Surge Current (Non-repetitive) @1ms, square wave, 1 cycle, Tj=25℃		160.0								A
Current squared time @1ms≤t8.3≤ms Tj=25℃, Rating of per diode	I²t	26.6								A²S
Maximum Forward Voltage at 3.0A DC	VFM	0.95				1.3		1.70		V
Maximum Reverse Current TA = 25℃	IR	5.0								uA
at Rated DC Blocking Voltage TA = 125℃		100.0								
Maximum reverse recovery time	Trr	35.0								ns
Typical Thermal Resistance Between junction and ambient	RQJa	40.0								℃/W
Operating Junction Temperature Range	TJ	—55to+150								℃
Storage Temperature Range	TSTG	—55to+150								℃



FIG. 1 MAXIMUM AVERAGE FORWARD CURRENT DERATING

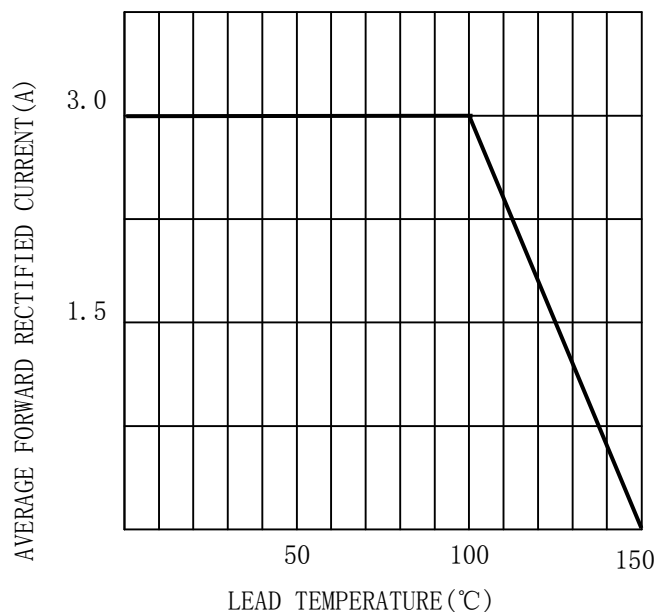


FIG. 2 TYPICAL FORWARD CHARACTERISTICS

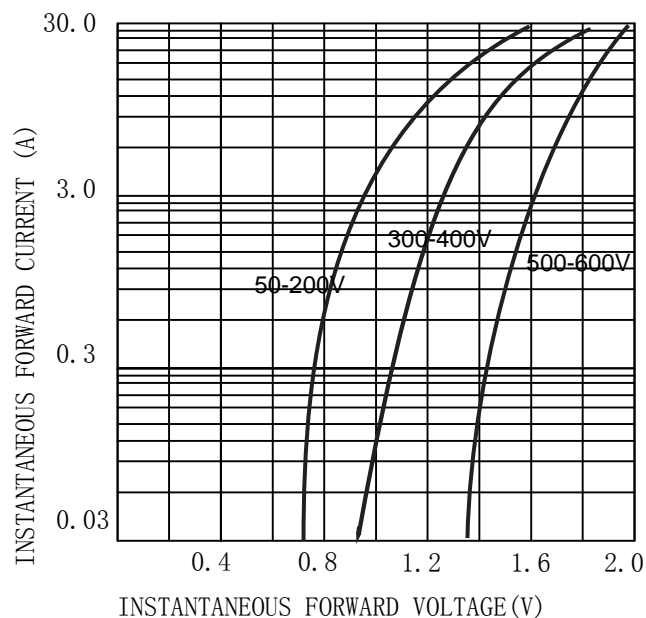


FIG. 3 MAXIMUM NON-REPEITIVE SURGE CURRENT

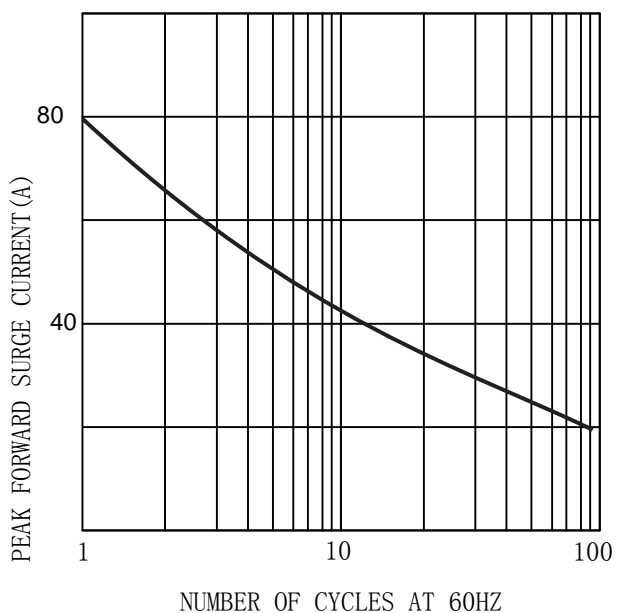
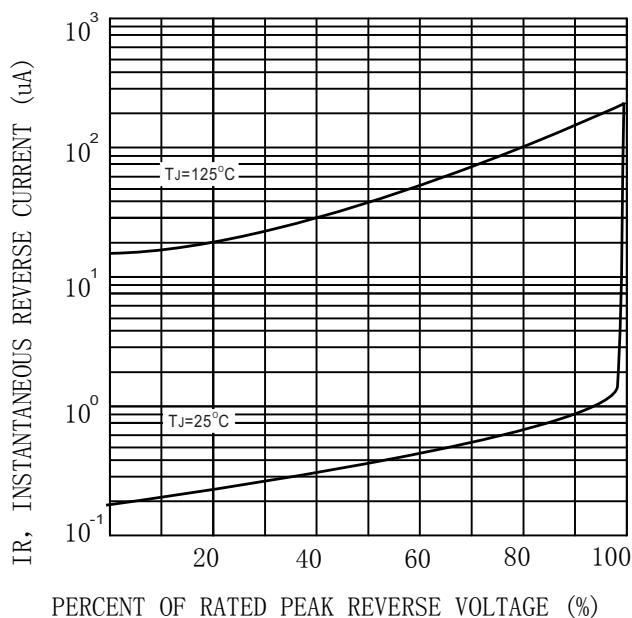


FIG. 4 TYPICAL REVERSE CHARACTERISTICS (per element)



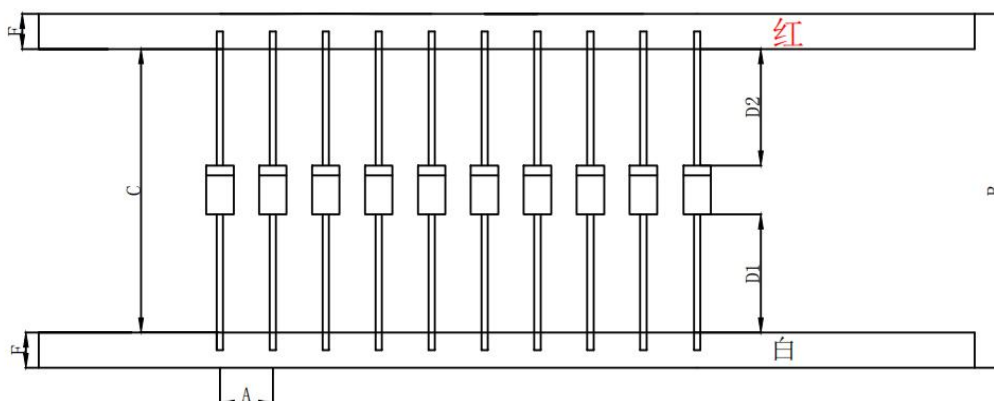


MARKING INFORMATION



Print according to customer request

PACKING REQUIRMENTS



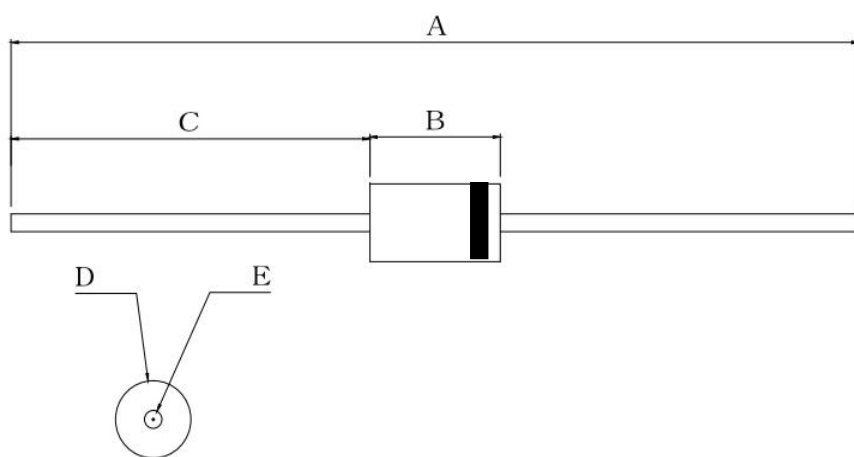
Specifcations	A	B	C	D1-D2	E
DO-27/MM	10± 0.5	65±2.5	52.4±0.5	1.0MAX	6.0±0.4

DEVICE TYPE	BOX/CAR TOON	Q'TY/CASE (pcs)
DO-27	1250	12500



Outline Dimensions

DO-27



DO-27				
DIM	INC HES		MM	
	MIN	MAX	MIN	MAX
A	2.23	2.35	56.70	59.70
B	0.34	0.38	8.70	9.70
C	0.94	0.98	24.00	25.00
D	0.19	0.22	4.90	5.50
E	0.04	0.05	1.10	1.30



Important Statements and disclaimers.

Do not copy or modify file information without permission.

Xumao Micro reserves the right to modify this document and its products.

Specifications are available without prior notice. Customer shall obtain and confirm the latest product information and specifications prior to final design, purchase or use.

Xumao Micro does not assume any implied warranties, including warranties of fitness for special purposes, non-infringement and merchantability.

The products shown here are not designed and licensed for demanding equipment at a level of reliability or for human life and any life-saving related applications or life-sustaining, such as medical devices, transportation equipment, aerospace machinery, and so on. Customers who use or sell these products for such applications do so at their own risk.

As Xumao Micro uses batch number as tracking benchmark, please provide batch number for tracking in case of exception.