



Bridge Rectifiers

Reverse Voltage 600V-1000v

Forward current-0.8A

Features

Glass passivated chip

High surge current capability

Ideal for surface mounted applications

Low power loss, high efficiency

Plastic Case Material has UL Flammability

Mechanical Data

Package: MBS

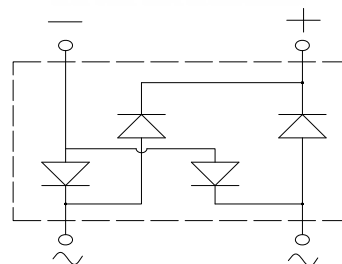
Terminals: Tin Plated leads, solderable per

Mil-STD-750 Method 2026

Polarity: As marked

Molding compound meets UL 94 V-0 flammability rating,

ROHS-compliant



Maximum Ratings (Ta=25°C Unless otherwise specified)

Type Number	SYMBOL	MB6S	MB8S	MB10S	Umit
Maximum Recurrent Peak Reverse Voltage	V _{RRM}	600	800	1000	V
Maximum RMS Voltage	V _{RMS}	420	560	700	V
Maximum DC Blocking Voltage	V _{DC}	600	800	1000	V
Maximum Average Forward Rectified Current	IO _(AV)	0.8			A
Peak Forward Surge Current 8.3ms Single half-sine-wave superimposed on rated load(JEDEC Method) on rated	IFSM	30.0			A
Forward Surge Current (Non-repetitive) @1ms, square wave, 1 cycle, Tj=25℃		60.0			
Current squared time @1ms≤t8.3≤ms Tj=25℃, Rating of per diode	I ² t	3.7			A ² S
Maximum Forward Voltage at 0.8A DC	V _{FM}	1.1			V
Maximum Reverse Current TA = 25℃	IR	5			uA
at Rated DC Blocking Voltage TA = 125℃		100			
Typical Thermal Resistance Between junction and	R _{QJa}	76.0			℃/W
Operating Junction Temperature Range	T _J	—55to+150			℃
Storage Temperature Range	T _{STG}	—55to+150			℃



FIG. 1 MAXIMUM AVERAGE FORWARD CURRENT DERATING

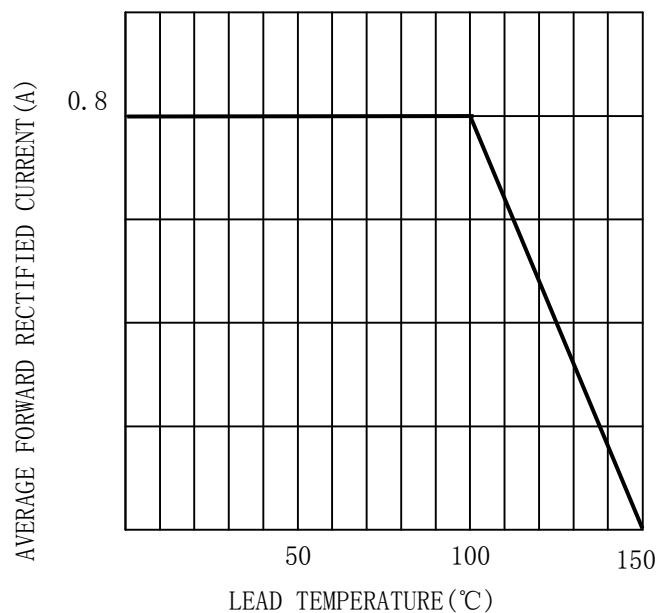


FIG. 2 TYPICAL FORWARD CHARACTERISTICS

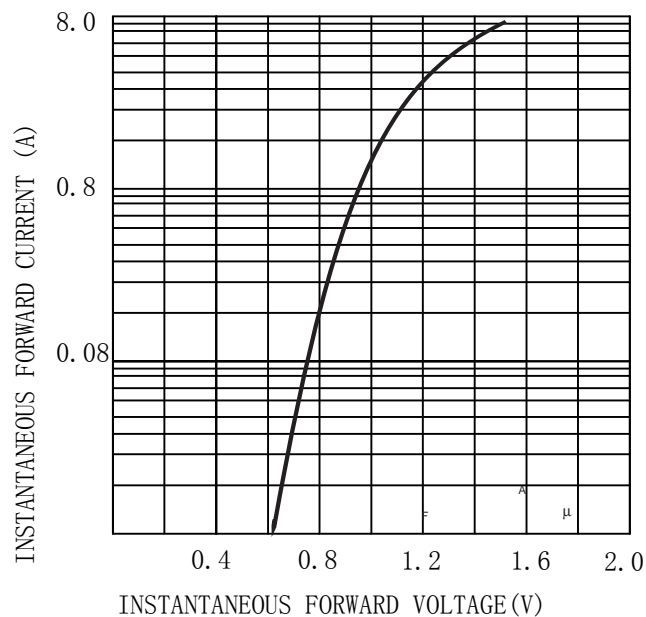


FIG. 3 MAXIMUM NON-REPEITIVE SURGE CURRENT

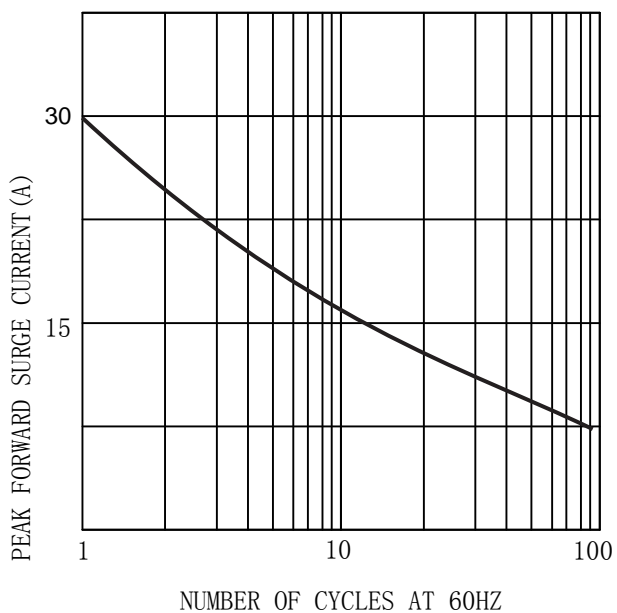
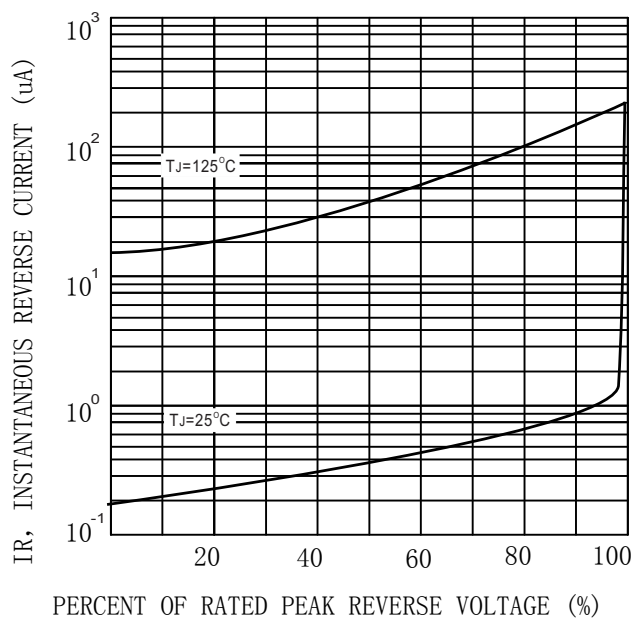


FIG. 4 TYPICAL REVERSE CHARACTERISTICS (per element)





MARKING INFORMATION



= Logo

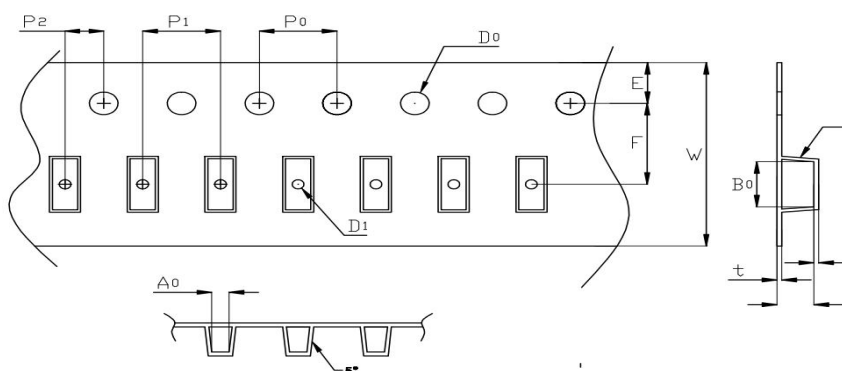
= Date Code Marking

MB**S = Marking Code

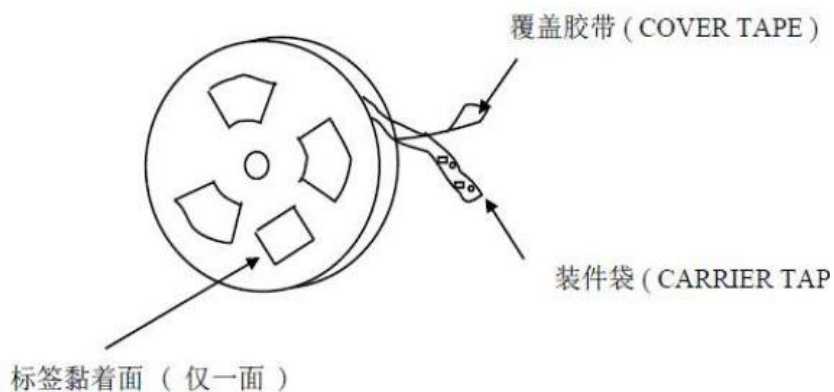
Print according to customer request

PACKING REQUIRMENTS

Carrier tape packing



Specifcations	Carrier tape type	Ao	Bo	Ko	Po	W
MBS	Anti-static	5.3± 0.10	7.4± 0.10	3.0± 0.10	4.00± 0.10	12.0± 0.10

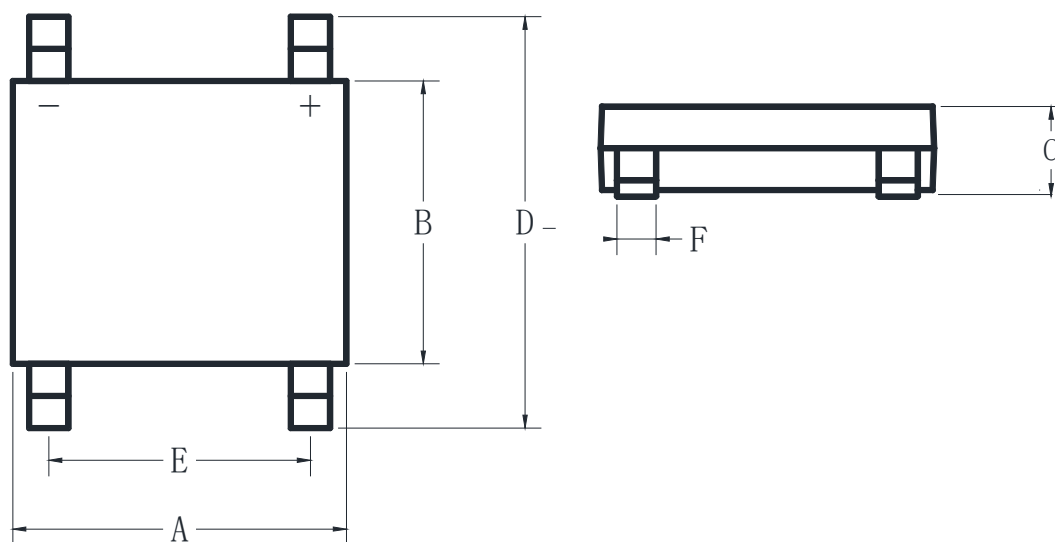


DEVICE TYPE	Tape width	13"Reel		
		Q'TY/REEL (pcs)	BOX/CAR TOON	Q'TY/REEL (pcs)
MBS	12mm	3000	20	60000



Outline Dimensions

MBS



MBS				
DIM	INC HES		MM	
	MIN	MAX	MIN	MAX
A	0.18	0.20	4.5	5.1
B	0.14	0.16	3.6	4
C	0.09	0.11	2.3	2.7
D	0.24	0.30	6	7.5
E	0.08	0.12	2	3
F	0.02	0.04	0.4	1



Important Statements and disclaimers.

Do not copy or modify file information without permission.

Xumao Micro reserves the right to modify this document and its products.

Specifications are available without prior notice. Customer shall obtain and confirm the latest product information and specifications prior to final design, purchase or use.

Xumao Micro does not assume any implied warranties, including warranties of fitness for special purposes, non-infringement and merchantability.

The products shown here are not designed and licensed for demanding equipment at a level of reliability or for human life and any life-saving related applications or life-sustaining, such as medical devices, transportation equipment, aerospace machinery, and so on. Customers who use or sell these products for such applications do so at their own risk.

As Xumao Micro uses batch number as tracking benchmark, please provide batch number for tracking in case of exception.