



**Schottky rectifier bridge**  
**Reverse Voltage100v**  
**Forward current-2A**

## Features

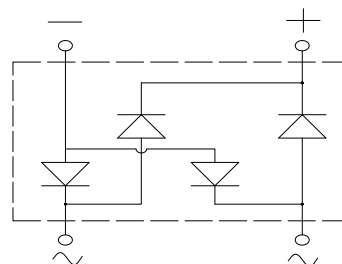
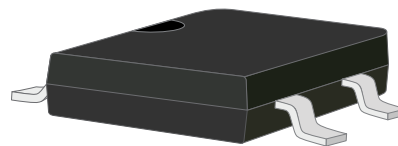
Schottky chip

High surge current capability

Low power losses, high efficiency

Ideal for surface mounted applications

Plastic Case Material has UL Flammability



## Mechanical Data

Package: MBF

Terminals: Tin Plated leads, solderable per

Mil-STD-750 Method 2026

Polarity: As marked

Molding compound meets UL 94 V-0 flammability rating,

ROHS-compliant

## Maximum Ratings (Ta=25°C Unless otherwise specified)

Type Number	SYMBOL	KMB210F	Unit
Maximum Recurrent Peak Reverse Voltage	$V_{RRM}$	100	V
Maximum RMS Voltage	$V_{RMS}$	70	V
Maximum DC Blocking Voltage	$V_{DC}$	100	V
Maximum Average Forward Rectified Current	$I_{O(AV)}$	2.0	A
Peak Forward Surge Current 8.3ms Single half-sine-wave superimposed on rated load(JEDEC Method) on rated	IFSM	40.0	A
Forward Surge Current (Non-repetitive) @1ms, square wave, 1 cycle, Tj=25°C		80.0	
Current squared time @1ms≤t≤8.3ms Tj=25°C, Rating of per diode	$I^2t$	6.6	A <sup>2</sup> S
Maximum Forward Voltage at 2A DC	$V_{FM}$	0.85	V
Maximum Reverse Current TA = 25°C	IR	0.1	mA
at Rated DC Blocking Voltage TA = 100°C		20	
Operating Junction Temperature Range	T <sub>J</sub>	—55to+150	°C
Storage Temperature Range	T <sub>STG</sub>	—55to+150	°C

FIG. 1 MAXIMUM AVERAGE FORWARD CURRENT DERATING

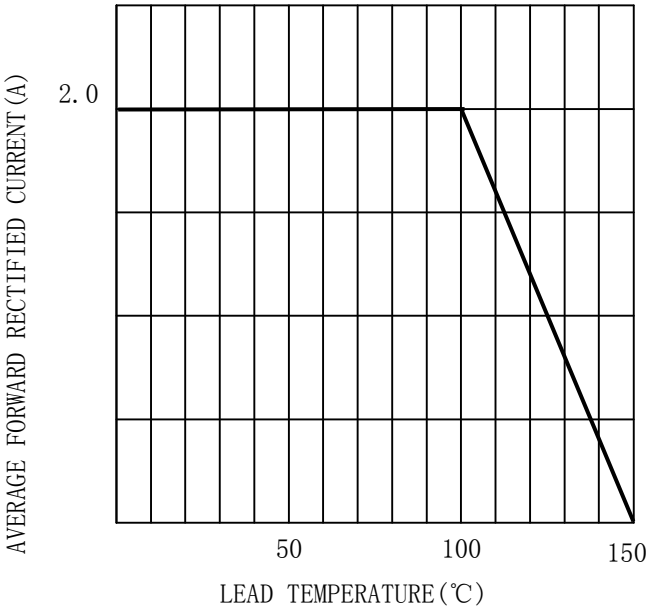


FIG. 2 TYPICAL FORWARD CHARACTERISTICS

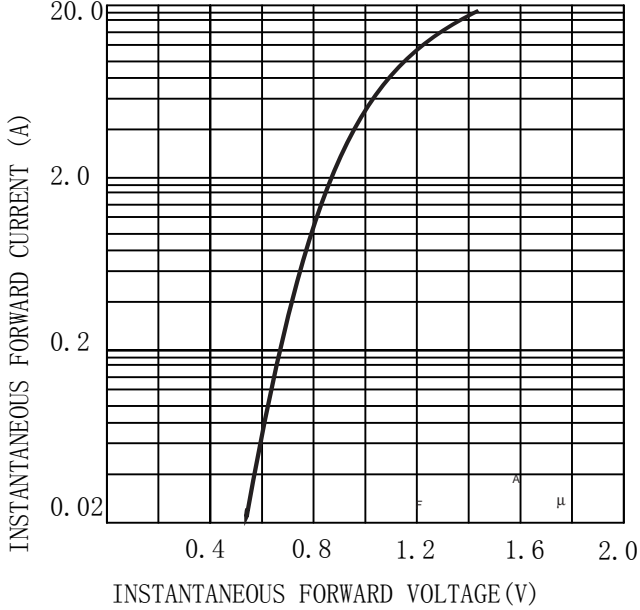


FIG. 3 MAXIMUM NON-REPEITIVE SURGE CURRENT

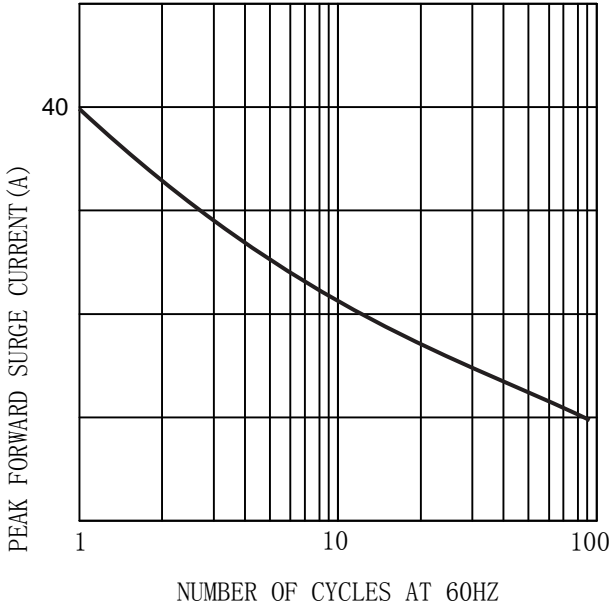
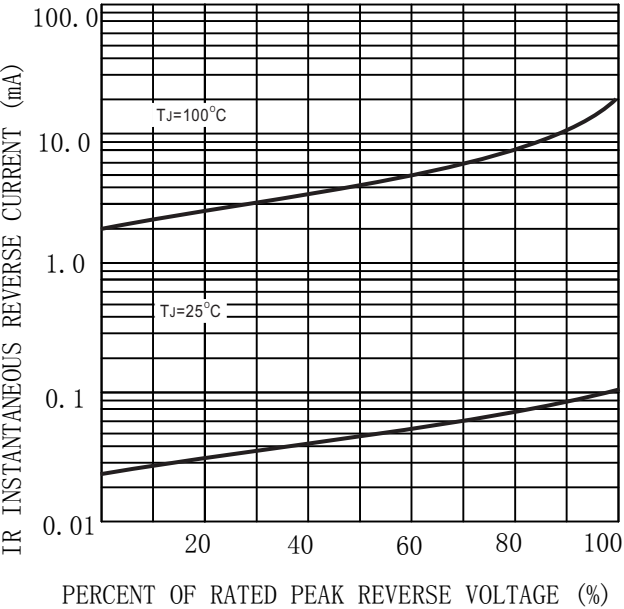


FIG. 4 TYPICAL REVERSE CHARACTERISTICS (per element)





## MARKING INFORMATION



= Logo



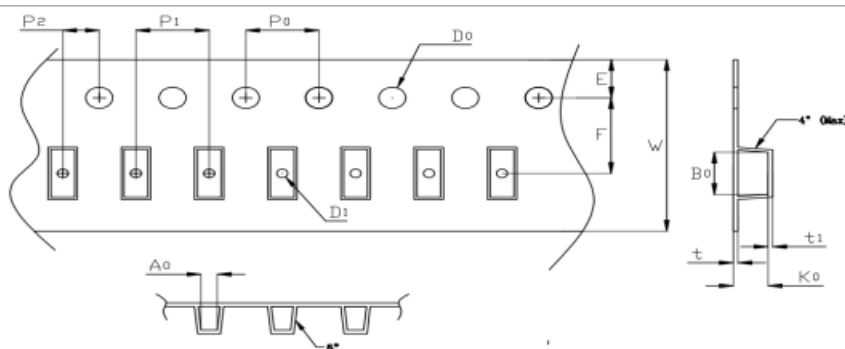
= Date Code Marking

KMB\*\*F= Marking Code

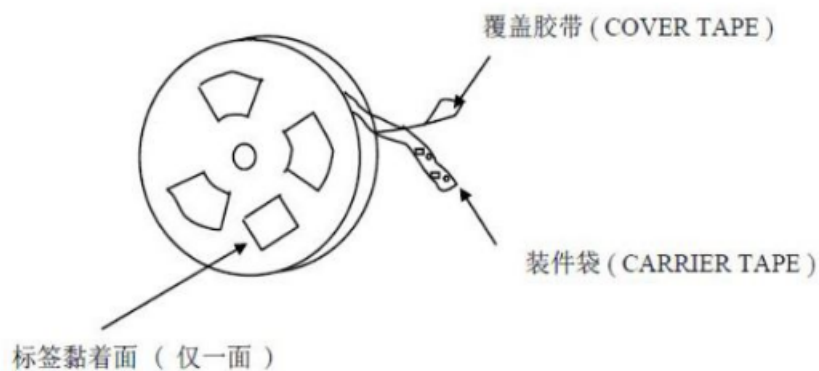
Print according to customer request

## PACKING REQUIRMENTS

Carrier tape packing



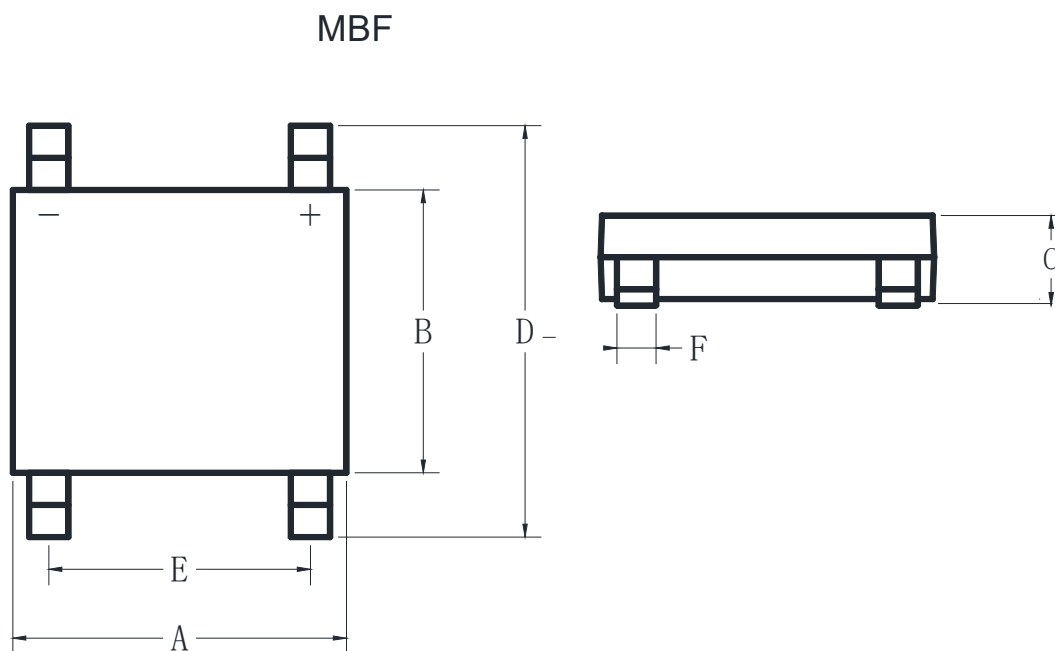
Specifications	Carrier tape type	A0	B0	K0	P0	W	t	Explain
MBF	Anti-static	5.2±0.10	7.12±0.10	1.72±0.10	4.00±0.10	12.0±0.10	0.23±0.05	



DEVICE TYPE	Tape width	13"Reel		
		Q'TY/REEL (pcs)	BOX/CARTOON	Q'TY/REEL (pcs)
MBF	12mm	5000	20	100000



## Outline Dimensions



MBF				
DIM	INC HES		MM	
	MIN	MAX	MIN	MAX
A	0.18	0.20	4.5	5.1
B	0.14	0.16	3.6	4
C	0.05	0.11	1.2	1.6
D	0.24	0.30	6	7.5
E	0.08	0.12	2	3
F	0.02	0.04	0.4	1





## **Important Statements and disclaimers.**

Do not copy or modify file information without permission.

Xumao Micro reserves the right to modify this document and its products.

Specifications are available without prior notice. Customer shall obtain and confirm the latest product information and specifications prior to final design, purchase or use.

Xumao Micro does not assume any implied warranties, including warranties of fitness for special purposes, non-infringement and merchantability.

The products shown here are not designed and licensed for demanding equipment at a level of reliability or for human life and any life-saving related applications or life-sustaining, such as medical devices, transportation equipment, aerospace machinery, and so on. Customers who use or sell these products for such applications do so at their own risk.

As Xumao Micro uses batch number as tracking benchmark, please provide batch number for tracking in case of exception.