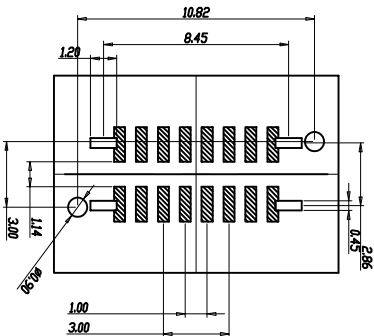
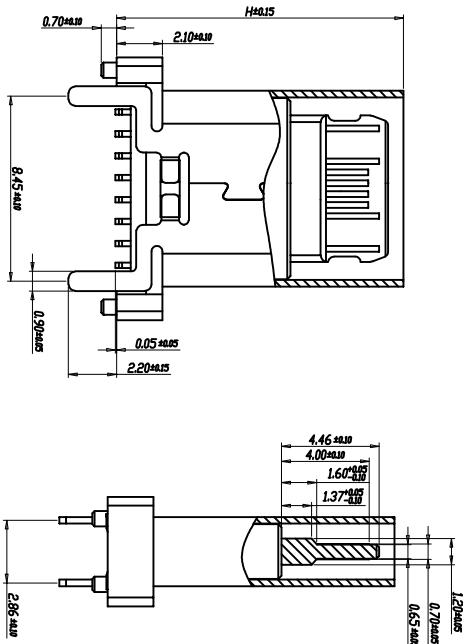
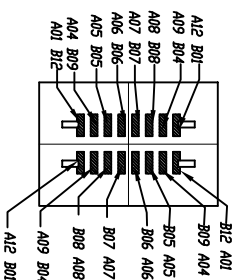
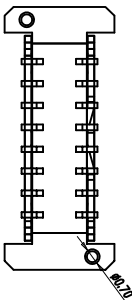
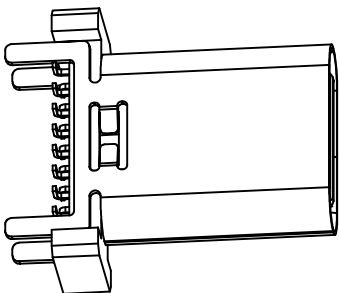
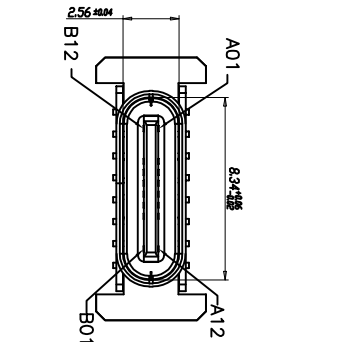


REV.	ECN NO.	DESCRIPTION	DATE	DESIGN




RECOMMENDED PCB LAYOUT (71.00mm)
TOLERANCE UNSPECIFIED ±0.05mm

SPECIFICATIONS:

- 1. ELECTRICAL CHARACTERISTICS:
 - 1-1. CONTACT RESISTANCE: 30mΩ MAX.
 - 1-2. DIELECTRIC WITHSTANDING VOLTAGE: 100V AC FOR ONE MINUTE.
 - 1-3. INSULATION RESISTANCE: 100MΩ MIN. MEASURED BY 500 VDC
- 2. MECHANICAL CHARACTERISTICS:
 - 2-1. INSERTION FORCE :0.5-2.0Kg(REF.)
 - 2-2. WITHDRAWAL FORCE :0.8-2.0Kg(REF.)
- 3. LIFE TEST: 10,000 CYCLES.
- 4. TO CONFORM TO THE KC00NN HAZARDOUS SUBSTANCE FREE SPEC.

H= MM					
9.30	10.00	10.50	12.40	13.10	13.70
15.00	17.50				

A1	GND	B12	GND
A4	VBUS	B9	VBUS
A5	CC1	B8	SB12
A6	DP1	B7	DN2
A7	DN1	B6	DP2
A8	SB11	B5	CC2
A9	VBUS	B4	VBUS
A12	GND	B1	GND
PIN	SIGNAL NAME	PIN	SIGNAL NAME

6	SHELL	STAINLESS STEEL	NI Plated	1PCS	TOLERANCE	NAME(INTENDED USE) CUSTOMER DRAWING	<div>菲孚 YOU 广东富盈兴业精密科技实业有限公司 Guangdong FIFU Precision Electronic Technology Co.,LTD.</div>	TITLE: CF 24P母座板上四脚加长12.4	DRAWG NO. FY23-41TC162F4XXXX-A		
5	SHIELDING PLATE	STAINLESS STEEL	---	1PCS							
4	MD	HIGH TEMPERATURE PLASTIC	BLACK	1PCS							
3	CONTACT	COPPER ALLOY	Au/NI Plated	1SET							
2	CONTACT	COPPER ALLOY	Au/NI Plated	1SET							
1	HOUSING	HIGH TEMPERATURE PLASTIC	BLACK	1PCS	MATERILA	----				CHED:	
NO.	DESCRIPTION	MATERIAL	REMARKS	QTY	FINISH	-----	APPD:	<div></div>	SCALE	SHEET	REV.
								1:1	1/2	A	