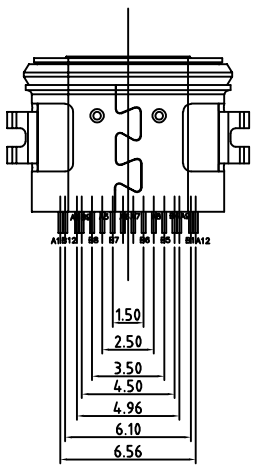
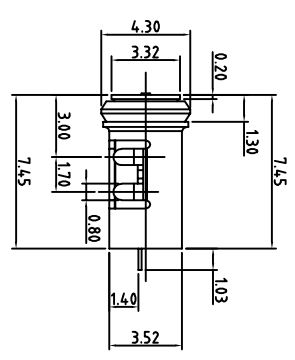
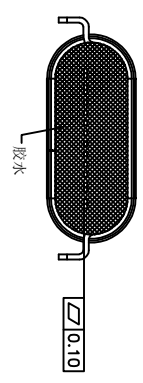
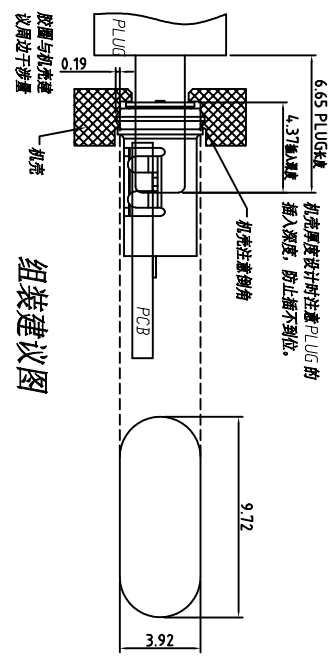


RECOMMENDED PCB LAYOUTTOP VIEW
DEFAULT TOLERANCE:±0.05

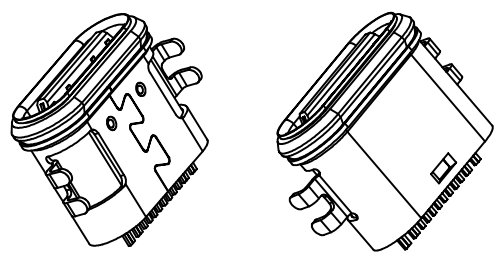
1. MATERIAL SPECIFICATION:
- 1.1 HOUSING:HIGH TEMPERATURE RESISTANT PLASTIC,UL94 V-0.
 - 1.2,CONTACTS:COPPER ALLOY
 - 1.3,MID PLATE: STAINLESS STEEL
 - 1.4,FRONT SHELL: STAINLESS STEEL
2. MECHANICAL PERFORMANCE:
- 2.1,INSERTION FORCE: 5~20N.
 - 2.2,REMOVAL FORCE: 6~20N.
 - 2.3,DURABILITY: 10000 CYCLES.
3. ELECTRICAL PERFORMANCE:
- 3.1. CURRENT RATING:5.0A
 - 3.1. VOLTAGE RATING:20V
- 3.2. LCCR:
VBUS & GND PINS AND OTHER PINS: 40mΩ/PIN MAX.
SHIELD: 50mΩ/MAX.
LCOR MAX. CHANGE OF ALL PINS: 10mΩ.
- 3.3,INSULATION RESISTANCE: 100MΩ MIN
- 3.4,DIELECTRIC WITHSTAND VOLTAGE:AC 100V FOR 1 MINUTE.
4. ENVIRONMENTAL PERFORMANCE:
- OPERATING TEMPERATURE: -25°C~+85°C.
 - IR REFLOW:
- THE PEAK TEMPERATURE ON THE BOARD SHALL BE MAINTAINED FOR 10 SECONDS AT 260°C.



USB TYPE-C PIN ASSIGNMENTS			
PIN NUMBER	SIGNAL NAME	PIN NUMBER	SIGNAL NAME
A1	GND	B12	GND
A4	VBUS	B9	VBUS
A5	CC1	B8	SBUS2
A6	Dp1	B7	Dn2
A7	Dn1	B6	Dp2
A8	SBU1	B5	CC2
A9	VBUS	B4	VBUS
A12	GND	B1	GND



组装建议图



TOLERANCE		NAME(INTENDED USE)	
X.X	±0.30 X.° ±10°	CUSTOMER DRAWING	
.XX	±0.20 .X.° ± 8°	PART NO.	TYTLE: TYPE C -16P防水母座沉板1.4
.XXX	±0.10 .XX° ± 5°	DESIGN: ZXM	DRAWG NO. FY23-13TC161F2745
UNITS	mm	CHED:	SCALE 1:1
MATERILA	----	APPD:	SHEET 1/2
FINISH	-----		REV. A

fyvnu 广东富盈兴业有限公司
Guangdong FYVNU Precision Electronic Technology Co.,LTD.