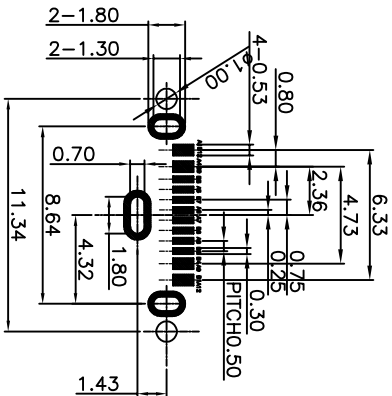
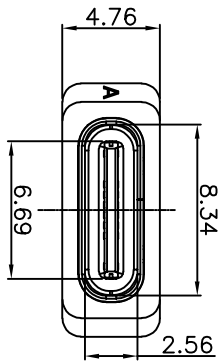
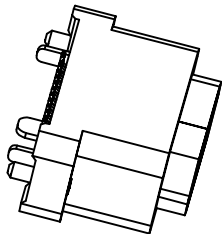


CUSTOMER

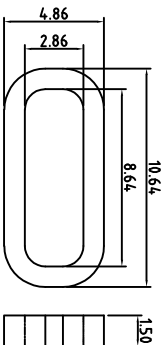
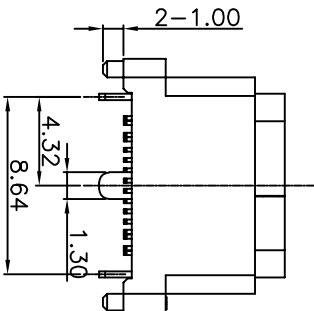
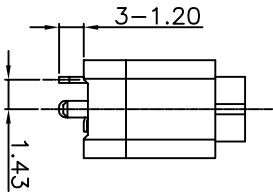
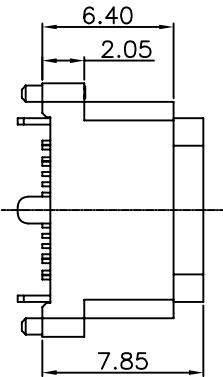
REV.	ECN NO.	DESCRIPTION	DATE	DESIGN



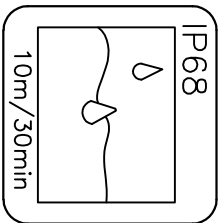
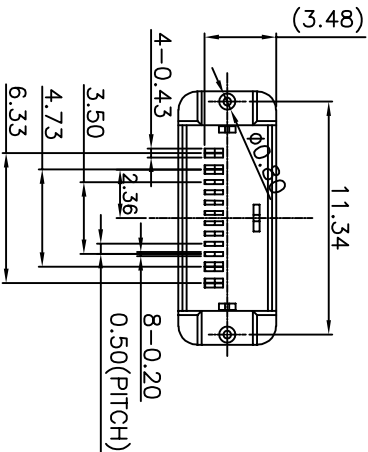
RECOMMENDED PCB LAYOUT TOP VIEW
(GENERAL TOLERANCE: ±0.05)



- NOTES:
- SPECIFICATION:
- CURRENT RATING: 3.0A MAX
 - DIELECTRIC WITHSTAND VOLTAGE: 100VAC
 - TEMPERATURE RANGE: -30 °C ~ 85 °C
 - CONTACT RESISTANCE: 40 MILLIONHM MAX
 - INSULATION RESISTANCE: 100 MEGOHMS MIN.
 - INSERTION FORCE : 5N~20N
 - UNMATING FORCE: 8N~20N
 - DURABILITY: 10,000 CYCLES



建议胶圈尺寸



6	防水圈	硅胶	BLACK	1PCS
5	SHELL	STAINLESS STEEL	NI Plated	1PCS
4	SHIELDING PLATE	STAINLESS STEEL	NI Plated	1PCS
3	CONTACT	COPPER ALLOY	Au/NI Plated	1SET
2	SHELL HOUSING	HIGH TEMPERATURE PLASTIC	BLACK	1PCS
1	HOUSING	HIGH TEMPERATURE PLASTIC	BLACK	1PCS
NO.	DESCRIPTION	MATERIAL	REMARKS	QTY

NAME(INTENDED USE)
CUSTOMER DRAWING

Guangdong FUYOU Precision Electronic Technology Co.,LTD.

PART NO. FY23-13TC161F4785

TITLE: TYPE C -16P防水母座立贴7.85

DESIGN: ZXMM

DRAWG NO. FY23-13TC161F4785

CHED:

SCALE SHEET REV.

APPD:

1:1 1/2 A

A1	GND	B12	GND
A4	VBUS	B9	VBUS
A5	CC1	B8	SBU2
A6	DP1	B7	DN2
A7	DN1	B6	DP2
A8	SBU1	B5	CC2
A9	VBUS	B4	VBUS
A12	GND	B1	GND
PIN	SIGNAL NAME	PIN	SIGNAL NAME

TOLERANCE

X.X ±0.30 X.' ±10°
.XX ±0.20 .X' ± 8°
.XXX ±0.10 .XX' ± 5°

UNITS

mm

MATERILA

CHED:

FINISH

APPD: