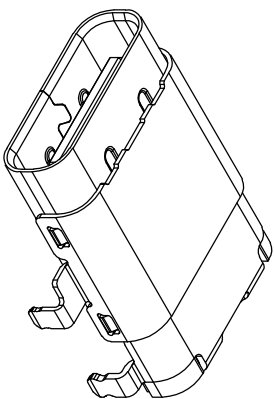
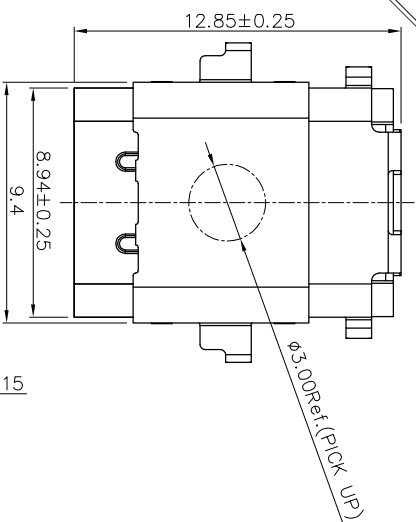
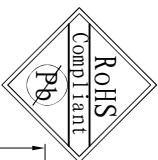


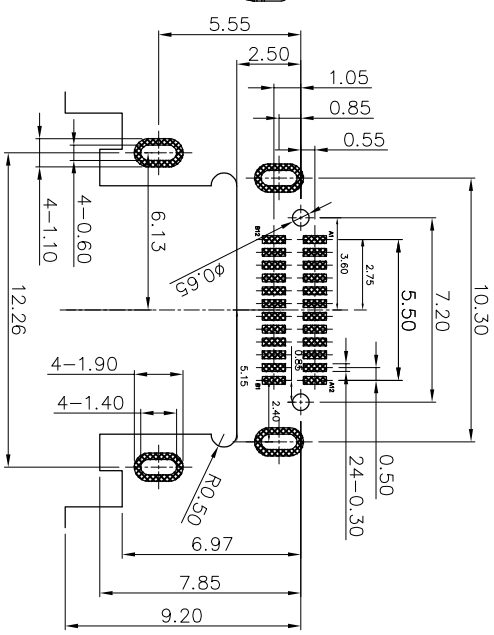
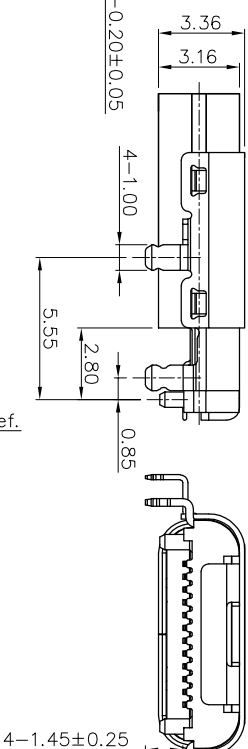
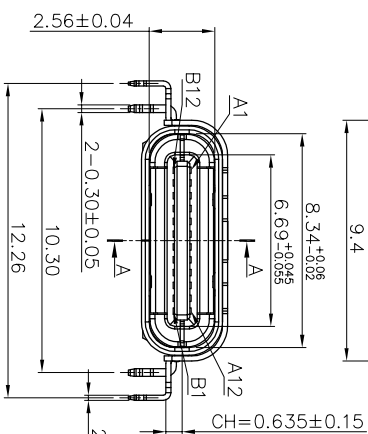
REV.	ECN NO.	DESCRIPTION	DATE	DESIGN



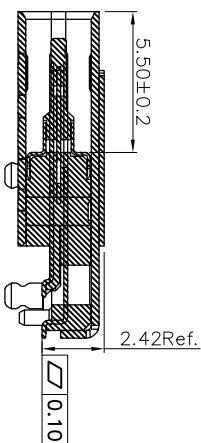
NOTE:  
1.MATERIAL:

- 1.1 INSULATOR: HIGH TEMPERATURE PLASTIC UL 94V-0;
- 1.2 CONTACT: COPPER ALLOY
- 1.3 SHELL: STAINLESS STEEL

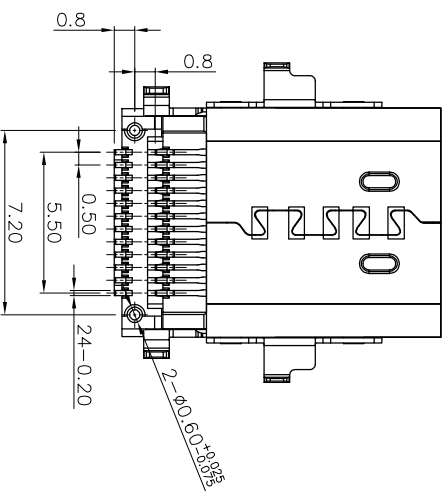
- 2.1 TERMINAL CONTACT: (SEE TAB) SELECTIVE GOLD PLATING IN THE CONTACT AREA AND G/F PLATING IN THE SOLDER TAIL AREA WITH 50u" NICKEL UNDER PLATING OVERALL.
- 2.2 SHELL: 50u" Min. NICKEL ALL OVER,


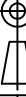


RECOMMENDED P.C.B LAYOUT (TOP VIEW)



SECTION "A-A"



TOLERANCE		NAME(INTENDED USE) CUSTOMER DRAWING		 广东融兴业精密科技实业有限公司 Guangdong Furuno Precision Electronic Technology Co.,LTD.		
X.X ±0.30	X.* ±10°	PART NO.		TITLE:		
.XX ±0.20	.X* ± 8°	FY23-020TC24F2124-01		CF 24P母座沉板1.0四脚加长12.4		
.XXX ±0.10	.XX* ± 5°	DESIGN: ZXM		DRAWG NO. FY23-020TC24F2124-C		
UNITS	mm					
MATERILA	-----	CHED:				
FINISH	-----	APPD:				
				SCALE SHEET REV.		
		1:1		1/2 A		