



TAI-SAW TECHNOLOGY CO., LTD.

No. 3, Industrial 2nd Rd., Ping-Chen Industrial District,
Taoyuan, 324, Taiwan, R.O.C.

TEL: 886-3-4690038 FAX: 886-3-4697532

E-mail: tstsales@mail.taisaw.com Web: www.taisaw.com

Product Specifications Approval Sheet

Product Name: SAW Filter 1795 MHz SMD 3.0X3.0 mm

TST Parts No.: TA2032A

Customer Parts No.: _____

Company: _____

Division: _____

Approved by : _____

Date: _____

Checked by: _____ Sam Lin 

Approval by: _____ Bob Chau 

Date: _____ 08/16/2016

1. Customer signed back is required before TST can proceed with sample build and receive orders.
2. Orders received without customer signed back will be regarded as agreement on the specifications.
3. Any specifications changes must be approved upon by both parties and a new revision of specifications shall be released to reflect the changes



TAI-SAW TECHNOLOGY CO., LTD.

No. 3, Industrial 2nd Rd., Ping-Chen Industrial District,
Taoyuan, 324, Taiwan, R.O.C.

TEL: 886-3-4690038 FAX: 886-3-4697532
E-mail: tstsales@mail.taisaw.com Web: www.taisaw.com

SAW Filter 1795 MHz

MODEL NO.:TA2032A

REV. NO.:1.0

A. MAXIMUM RATING:

1. Input Power Level: 10 dB_m
2. DC voltage: 3 V
3. Operating Temperature: : -40°C to +85°C
4. Storage Temperature: -40°C to +85°C

RoHS Compliant
Lead free
Lead-free soldering

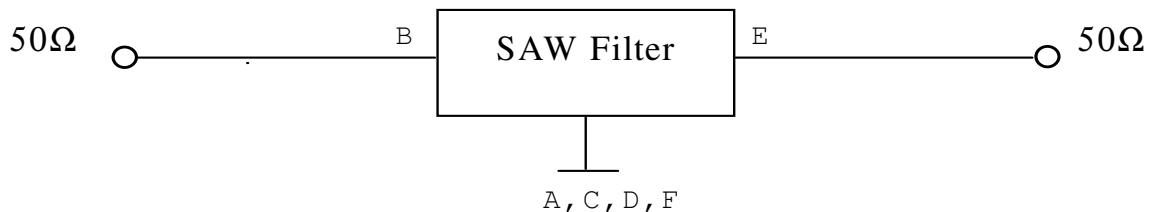
Electrostatic Sensitive Device

B. ELECTRICAL CHARACTERISTICS:

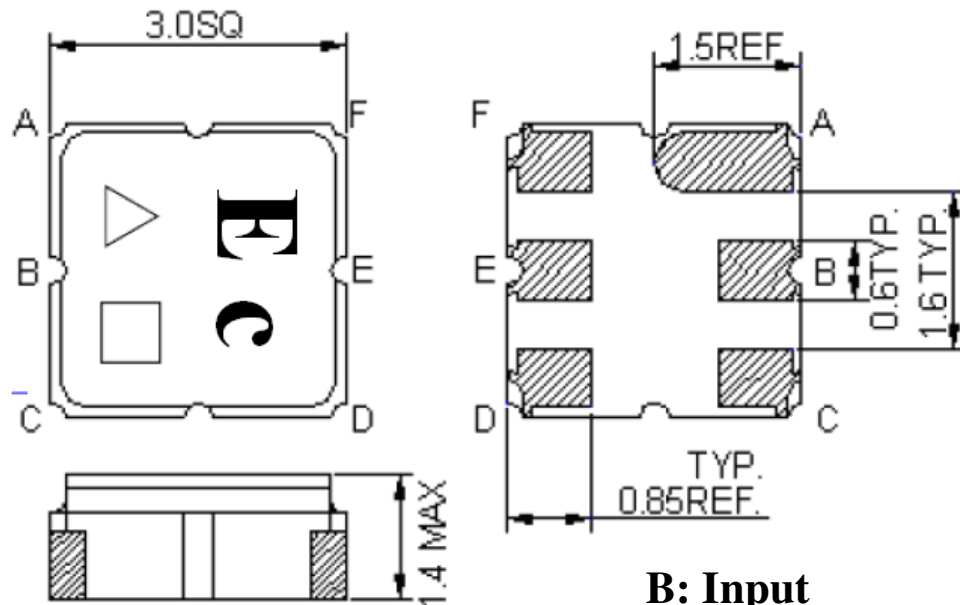
Item	Unit	Min.	Typ.	Max.
Center Frequency	MHz	-	1795	-
Insertion loss (1785 ~ 1805 MHz)	dB	-	1.6	3
Amplitude ripple (1785 ~ 1805 MHz)	dB	-	0.4	1.6
VSWR (1785 ~ 1805 MHz)	dB	-	1.6	2.2
Attenuation (Reference level from 0 dB)				
10 ~ 1720 MHz	dB	30	40	-
1720 ~ 1745 MHz	dB	10	35	-
1845 ~ 2000 MHz	dB	35	50	-
2000 ~ 3000 MHz	dB	25	35	-
Temperature Coefficient of Frequency	ppm/k	-	-36	-

C. MEASUREMENT CIRCUIT:

HP Network analyzer



D.OUTLINE DRAWING:



B: Input

E: Output

A, C, D, F: Ground

Unit: mm

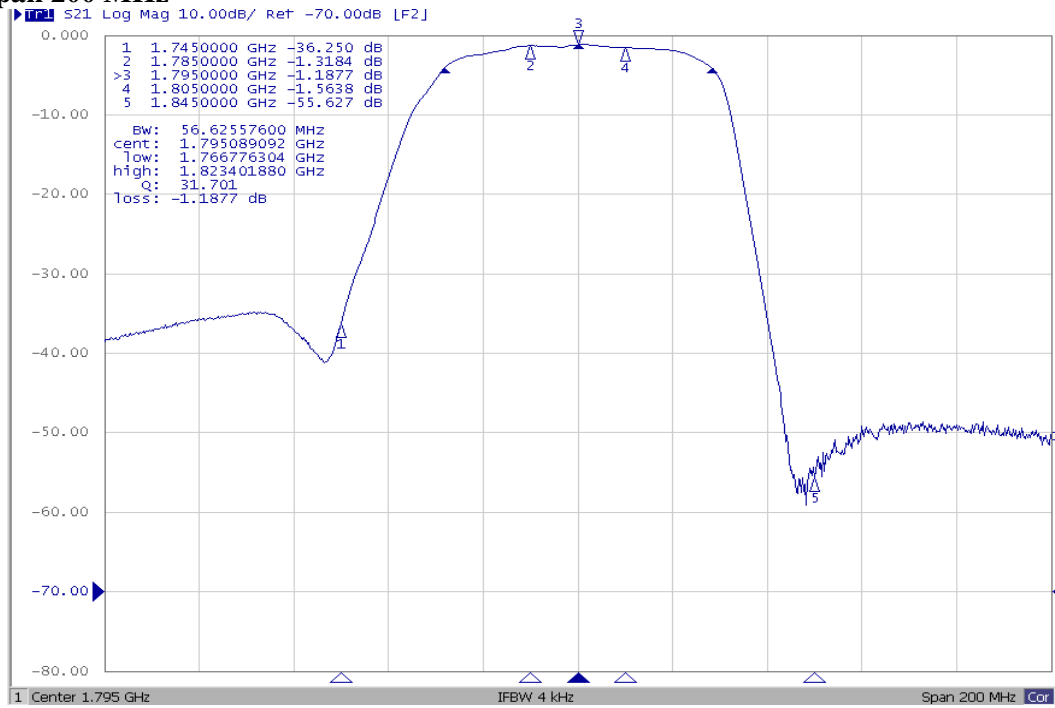
△ : Year Code (2009->9, 2010->0,..., 2018->8)

□ : Date Code (Follow the table from planner each year)

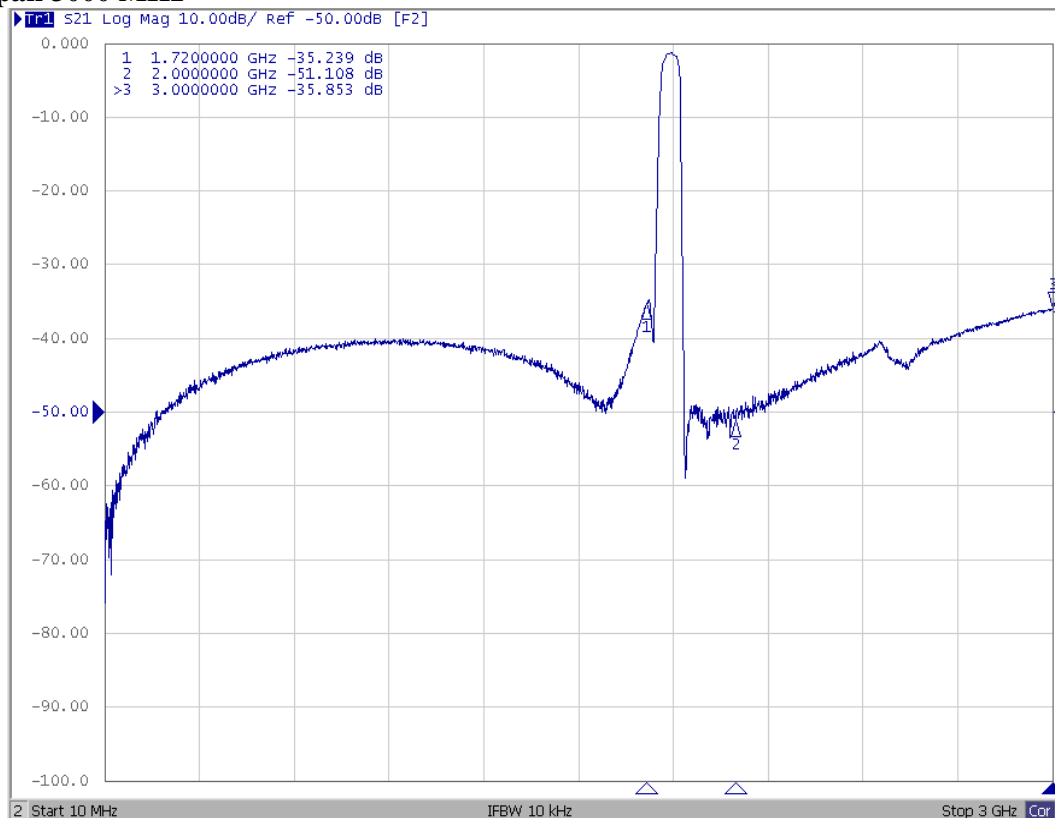
WK01	WK02	WK03	WK04	WK05	WK06	WK07	WK08	WK09	WK10	WK11	WK12	WK13
A	B	C	D	E	F	G	H	I	J	K	L	M
WK14	WK15	WK16	WK17	WK18	WK19	WK20	WK21	WK22	WK23	WK24	WK25	WK26
N	O	P	Q	R	S	T	U	V	W	X	Y	Z
WK27	WK28	WK29	WK30	WK31	WK32	WK33	WK34	WK35	WK36	WK37	WK38	WK39
a	b	c	d	e	f	g	h	i	j	k	l	m
WK40	WK41	WK42	WK43	WK44	WK45	WK46	WK47	WK48	WK49	WK50	WK51	WK52
n	o	p	q	r	s	t	u	v	w	x	y	z

E. Frequency Characteristics :

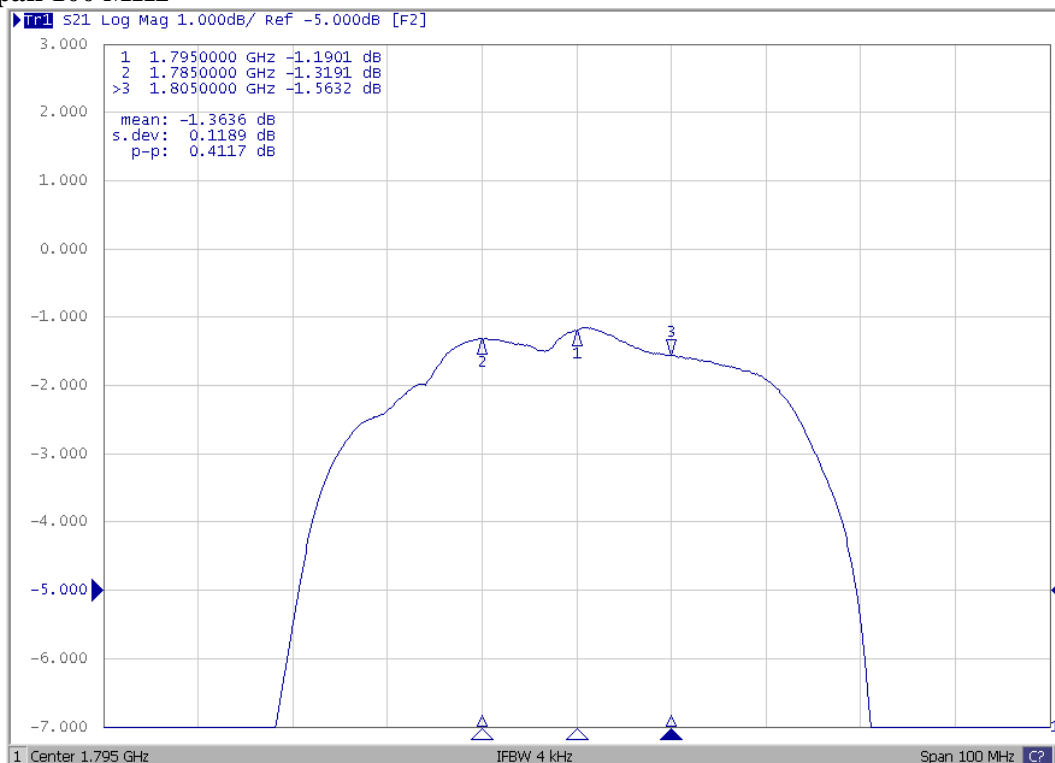
Span 200 MHz



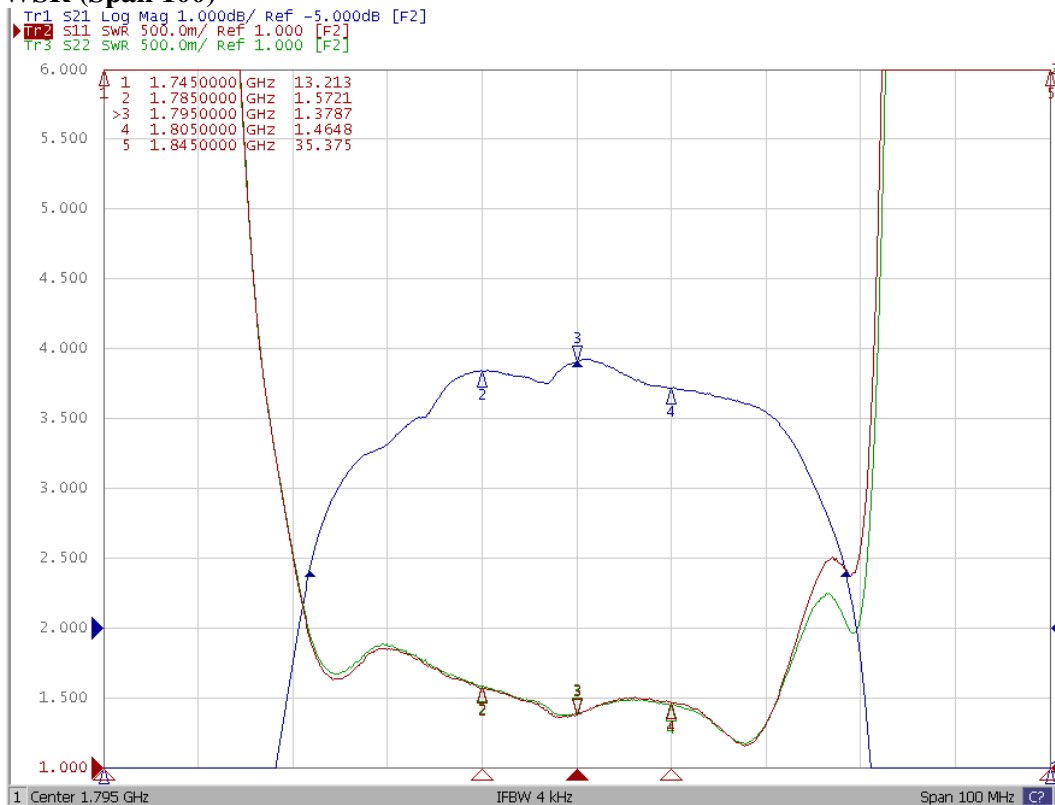
Span 3000 MHz



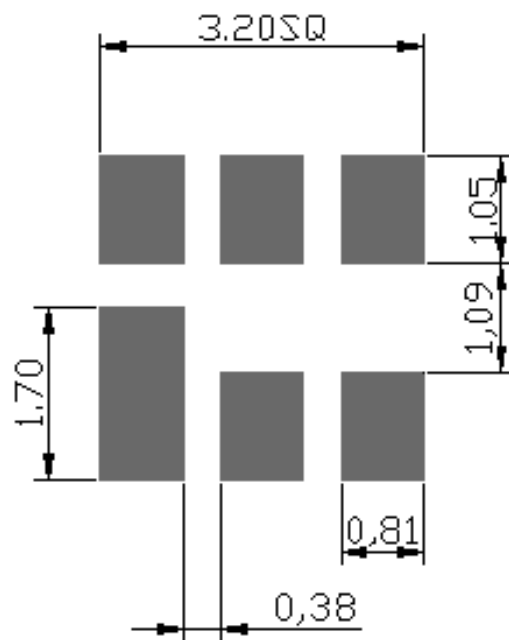
Span 100 MHz



VWSR (Span 100)



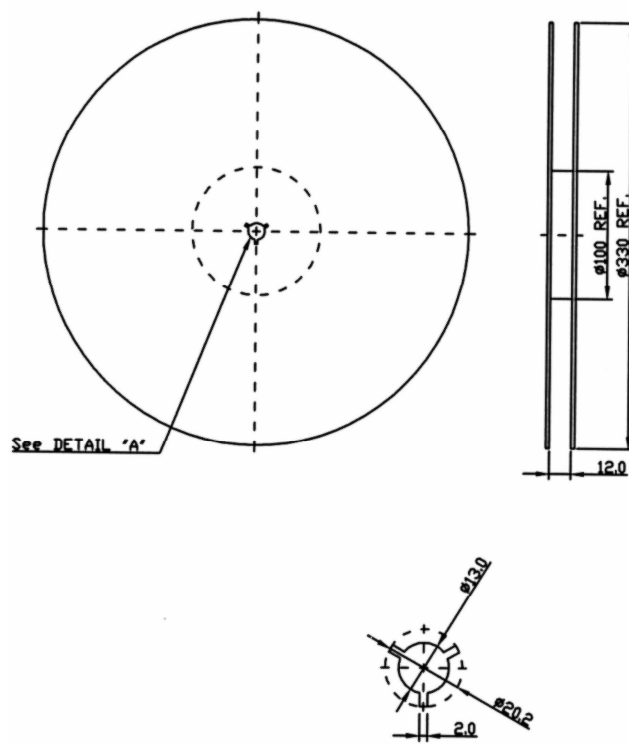
F. PCB FOOTPRINT:

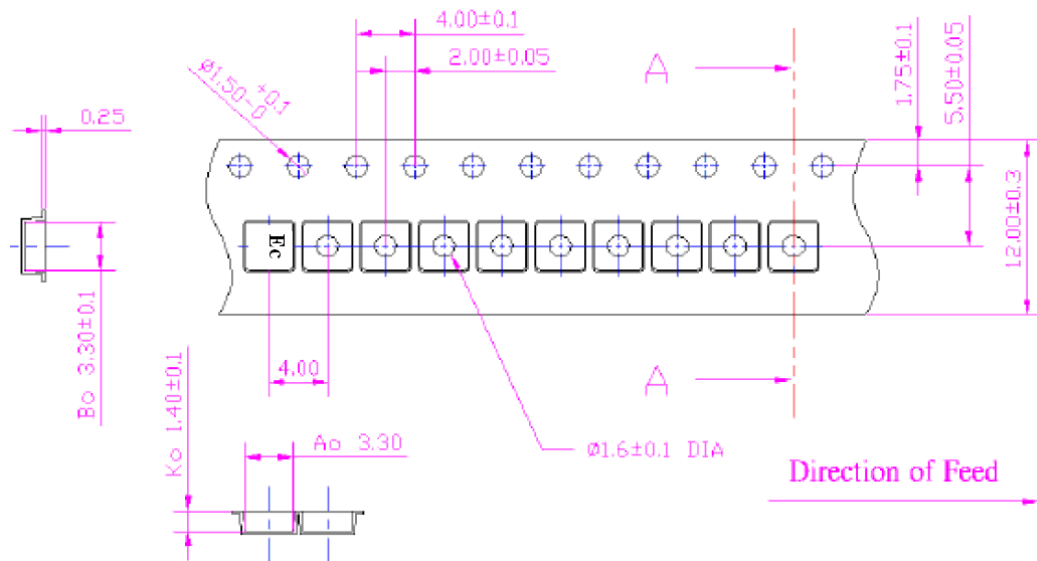


G. PACKING:

1. REEL DIMENSION

(Please refer to FR-75D10 for packing quantity)





H. RECOMMENDED REFLOW PROFILE :

1. Preheating shall be fixed at 150~180℃ for 60~90 seconds.
2. Ascending time to preheating temperature 150℃ shall be 30 seconds min.
3. Heating shall be fixed at 220℃ for 50~80 seconds and at 260℃+0/-5℃ peak (20~40sec).
4. Time: 2 times.

