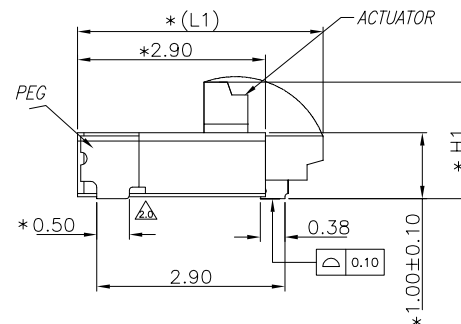
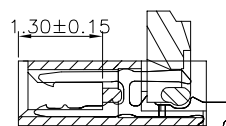
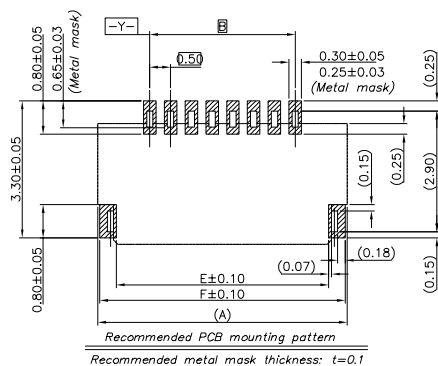
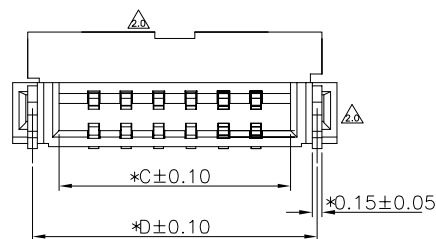
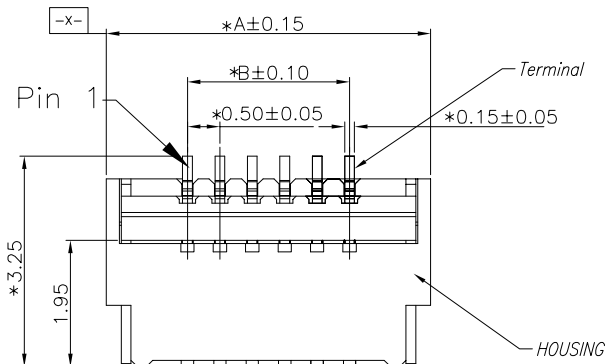
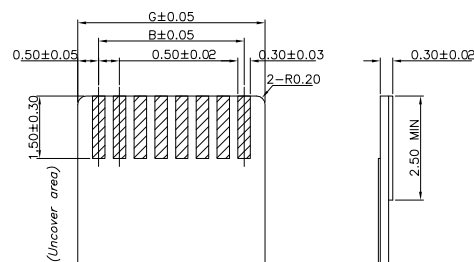


RoHS+REACH

G647

PART NO. LEGEND:
F2DXXU-A1G5-HR6

R:Packing=Tape&Reel
H:H=1.0mm
G:CONTACT:GOLD PLATING
1:PULL:LCP BLACK
A:HOUSING:LCP NATURAL
U:SMT
XX:NO. OF POSITIONS
D:Back-Flip Conn RA SMT TYPE



Recommended FPC/FFC Dimensions

▲ 40P	22.00	19.50	20.57	21.39	21.10	21.90	20.50	1.75	3.8
▲ 30P	17.00	14.50	15.57	16.39	16.10	16.90	15.50	1.75	3.8
▲ 24P	14.00	11.50	12.57	13.39	13.10	13.90	12.50	1.55	3.5
▲ 22P	13.00	10.50	11.57	12.39	12.10	12.90	11.50	1.55	3.5
▲ 20P	12.00	9.50	10.57	11.39	11.10	11.90	10.50	1.55	3.5
▲ 18P	11.00	8.50	9.57	10.39	10.10	10.90	9.50	1.55	3.5
▲ 16P	10.00	7.50	8.57	9.39	9.10	9.90	8.50	1.55	3.5
▲ 14P	9.00	6.50	7.57	8.39	8.10	8.90	7.50	1.55	3.5
▲ 12P	8.00	5.50	6.57	7.39	7.10	7.90	6.50	1.55	3.5
▲ 10P	7.00	4.50	5.57	6.39	6.10	6.90	5.50	1.55	3.5
▲ 8P	6.00	3.50	4.57	5.39	5.10	5.90	4.50	1.55	3.5
▲ 6P	5.00	2.50	3.57	4.39	4.10	4.90	3.50	1.55	3.5
▲ 5P	4.50	2.00	3.07	3.89	3.60	4.40	3.00	1.55	3.5
▲ 4P	4.00	1.50	2.57	3.39	3.10	3.90	2.50	1.55	3.5
PIN	DIM=A	DIM=B	DIM=C	DIM=D	DIM=E	DIM=F	DIM=G	DIM=H1	DIM=L1

Note:

1. Material:

1.1 Housing: LCP.UL94V-0;

Color: natural.

1.2 Latch: LCP.UL94V-0;

Color: black.

1.3 Terminal: copper alloy

1.4 LEG: copper alloy

2. Finsh:

2.1 Terminal:Gold Flash;50u"-100u" Nickel Underplating

2.2 LEG: Tin over Nickel

4.0

3.0

2.0

1.0

REV.

DATE

DESCRIPTION

DRAWING

DRAWING:

Yue

CHECKED:

Yat

APPROVAL:

Huyatao

GENERAL TOLERANCE

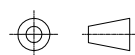
.X:=±0.30 .X*:=±2°
.XX:=±0.20 .XX*:=±1°
.XXX:=±0.10 .XXX*:=±0.5°

UNIT: MM

PROJECTION:

SCALE: 1/1

SHEET: 1/1



CHIN-BAN
Electronic Technology

DESCRIPTION:
0.5mm PITCH FPC H1.0mm Back-Flip

PART NO: F2DXXU-A1G5-HR6

REV: 2.0

DRAWING NO:

SIZE: A4