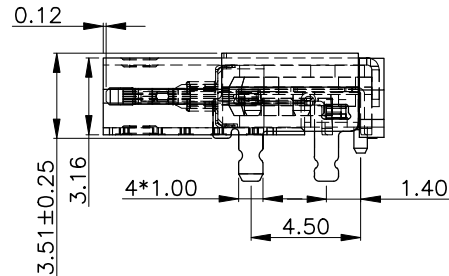
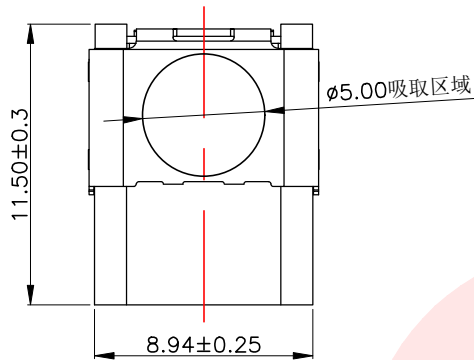


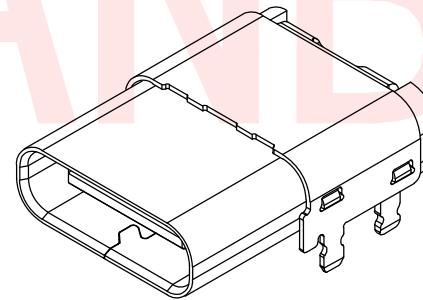
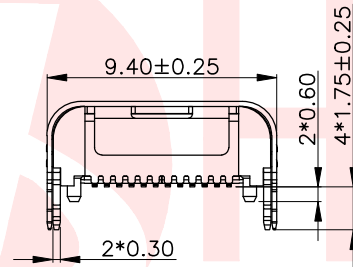
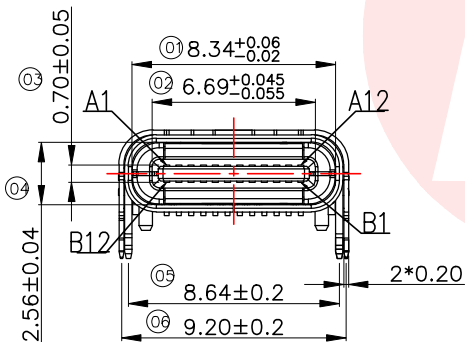


REV.	ECN NO OR DESCRIPTION	REVISED	DATE



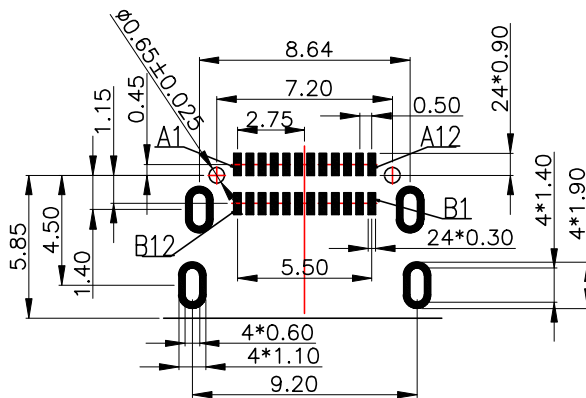
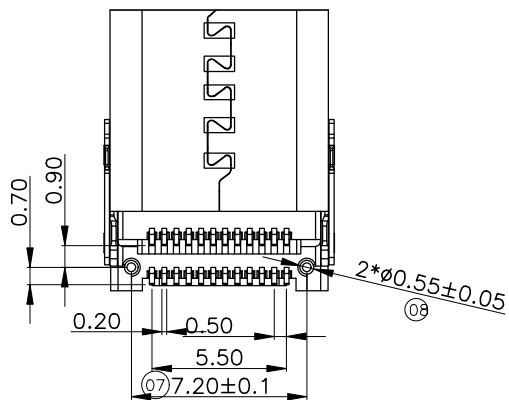
#### REMARKS(备注):

- CONTACT INSERTION AND WITHDRAW FORCE(插拔力):
  - 1.1.Insertion force(插入力):5N-20N max.
  - 1.2.Withdrawal force(拔出力):8N-20N.
  - 1.3.Durability(耐久性):10000Cycles.
- ELECTRIC PROPERTY(电气性能):
  - 2.1.Contact current rating(额定电流):5A.
  - 2.2.Dielectric Strength(介电强度):100V AC (RMS).
  - 2.3. Insulation Resistance(绝缘电阻):100 megaohms(兆欧) min.
  - 2.4.Contact resistance(接触电阻):  
40mOhms MAX.FOR VBUS,GND AND OTHER CONTACT.  
50mOhms MAX.AFTER ENVIRONMENT TEST.
- AMBIENT TEMPERATURE(温度环境):
  - 3.1.Operating temperature(额定温度):-55°C to +85°C.
- Marked "⊗x" should be FAI DIM (⊗xx 的为重点管控)



#### USB TYPE-C PIN ASSIGNMENTS

PIN NUMBER	SIGNAL NAME	PIN NUMBER	SIGNAL NAME
A1	GND	B12	GND
A2	SSTXp1	B11	SSRXp1
A3	SSTXn1	B10	SSRXn1
A4	Vbus	B9	SBU1
A5	CC1	B8	SBU2
A6	Dp1	B7	Dn2
A7	Dn1	B6	Dp2
A8	SBU1	B5	CC2
A9	Vbus	B4	Vbus
A10	SSRXn2	B3	SSTXn2
A11	SSRXp2	B2	SSTXp2
A12	GND	B1	GND



RECOMMENDED PCB LAYOUT (COMPONENT SIDE)

TOLERANCE: ±0.05

6	Outer-Shell	SUS-304 T=0.20mm	Ni: 50U"
5	Shell	SUS-304 T=0.30mm	Ni: 50U"
4	Shrapnel	SUS-304 T=0.12mm	
3	Tatch	SUS-301 T=0.15mm	
2	Terminal	C7025 T=0.15mm	NI: 50U", Au: G/F,
1	Housing	LCP	Sn: 60U"UL94-0 BLACK
ITEM	DESCRIPTION	MATERIAL	REMARKS

UNLESS OTHERWISE  
SPECIFIED TOLERANCES



东莞市汉博电子科技有限公司  
DONGGUAN HANBO TECHNOLOGY CO., LTD

DECIMALS: ANGLES:

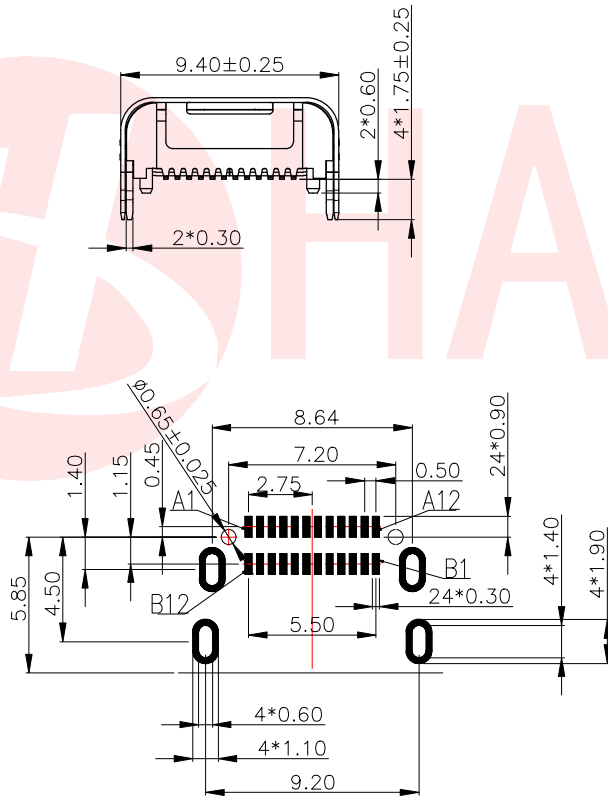
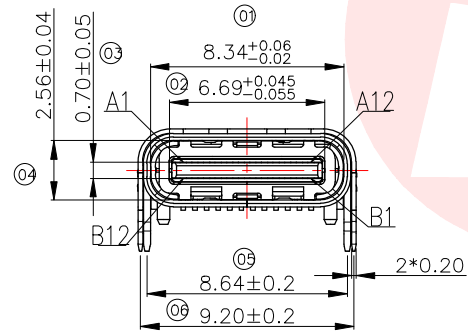
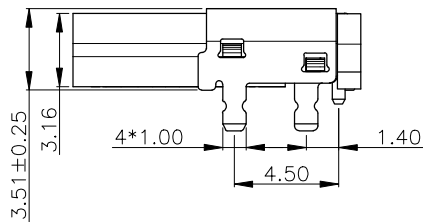
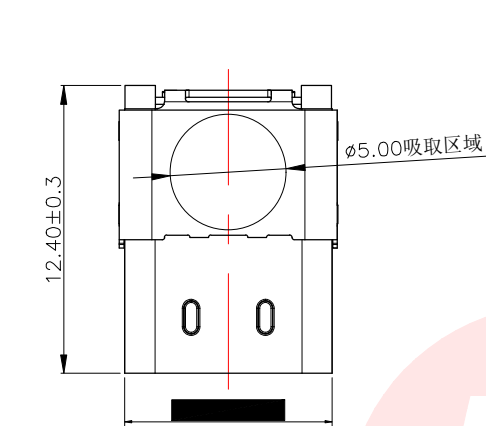
X :±0.25 X :±2°  
X.X :±0.20 X.X :±1°  
X.XX :±0.15

TITLE	TYPE C 24PIN 板上双贴SMT母座 四脚插板长11.5mm			
DWN	xiong	PART NO. MC-286-L115		
CHKD	lee	SCALE:1:1	UNIT: mm	
APVD	wang	SIZE: A4	SHEET:10F 1	REV: A4

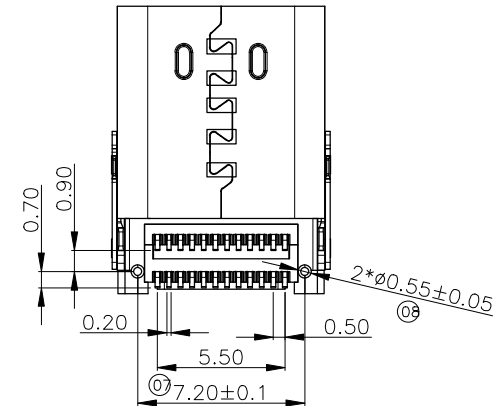
CUSTOMER COPY



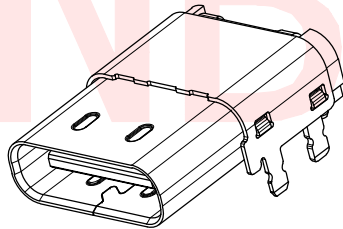
REV.	ECN NO OR DESCRIPTION	REVISED	DATE



RECOMMENDED PCB LAYOUT (COMPONENT SIDE)  
TOLERANCE: ±0.05



- REMARKS(备注):
- CONTACT INSERTION AND WITHDRAW FORCE(插拔力):
    - Insertion force(插入力): 5N-20N max.
    - Withdrawal force(拔出): 8N-20N.
    - Durability(耐久性): 10000 Cycles.
  - ELECTRIC PROPERTY(电气性能):
    - Contact current rating(额定电流): 5A.
    - Dielectric Strength(介电强度): 100V AC (RMS).
    - Insulation Resistance(绝缘电阻): 100 megaohms(兆欧) min.
    - Contact resistance(接触电阻): 40mOhms MAX.FOR VBUS,GND AND OTHER CONTACT. 50mOhms MAX.AFTER ENVIRONMENT TEST.
  - AMBIENT TEMPERATURE(温度环境):
    - Operating temperature(制造温度): -55°C to +85°C.
  - Marked "⊗x" should be FAI DIM (标⊗xx 的为重点管控)



USB TYPE-C PIN ASSIGNMENTS

PIN NUMBER	SIGNAL NAME	PIN NUMBER	SIGNAL NAME
A1	GND	B12	GND
A2	SSTXp1	B11	SSRXp1
A3	SSTXn1	B10	SSRXn1
A4	Vbus	B9	Vbus
A5	CC1	B8	SBU2
A6	Dp1	B7	Dn2
A7	Dn1	B6	Dp2
A8	SBU1	B5	CC2
A9	Vbus	B4	Vbus
A10	SSRXn2	B3	SSTXn2
A11	SSRXp2	B2	SSTXp2
A12	GND	B1	GND

6	Outer-Shell	SUS-304 T=0.20mm	Ni: 50U"
5	Shell	SUS-304 T=0.30mm	Ni: 50U"
4	Shrapnel	SUS-304 T=0.12mm	
3	Tatch	SUS-301 T=0.15mm	
2	Terminal	C7025 T=0.15mm	Ni: 50U", Au: G/F,
1	Housing	LCP	Sn: 60U" UL94-0 BLACK
ITEM	DESCRIPTION	MATERIAL	REMARKS
UNLESS OTHERWISE SPECIFIED TOLERANCES		东莞市汉博电子科技有限公司 DONGGUAN HANBO TECHNOLOGY CO., LTD	
DECIMALS: ANGLES:		TITLE TYPE C 24PIN 板上双贴SMT母座 四脚插板长12.4mm	
X	:±0.25	X	:±2°
X.X	:±0.20	X.X	:±1°
X.XX	:±0.15		
DWN	xiong	PART NO. MC-286-L124	
CHKD	lee	SCALE: 1:1	UNIT: mm
APVD	wang	SIZE: A4	SHEET: 10F 1
CUSTOMER COPY			