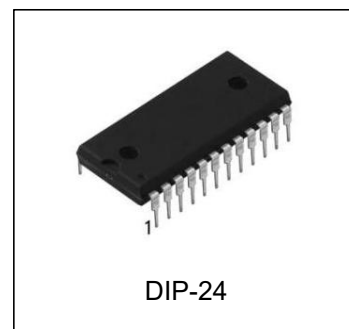


CMOS PROGRAMMABLE INTERVAL TIMER

FEATURES

- Maximum operating frequency of 8 MHz
- High speed and low power consumption achieved through silicon gate CMOS technology
- Completely static operation
- Three independent 16-bit down-counters
- 3 V to 6 V single power supply
- Six counter modes available for each counter
- Binary and decimal counting possible
- 24-pin Plastic DIP (DIP-24-P-600-2.54)



ORDERING INFORMATION

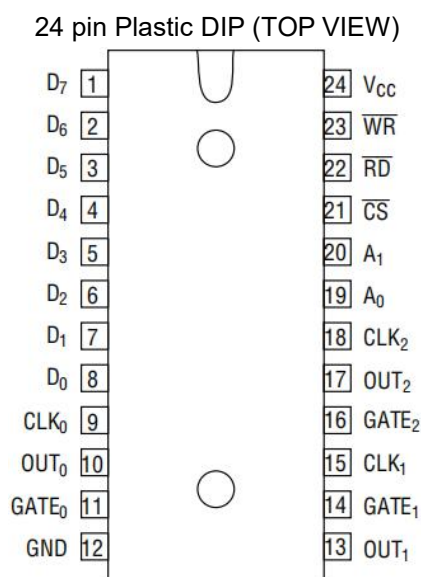
DEVICE	Package Type	MARKING	Packing	Packing Qty
HG82C53N	DIP-24	HG82C53	TUBE	300pcs/Box

GENERAL DESCRIPTION

The HG82C53 is programmable universal timers designed for use in microcomputer systems. Based on silicon gate CMOS technology, it requires a standby current of only 100 mA (max.) when the chip is in the nonselected state. During timer operation, power consumption is still very low only 8 mA (max.) at 8 MHz of current required. The device consists of three independent counters, and can count up to a maximum of 8 MHz

HG82C53 The timer features six different counter modes, and binary count/BCD count functions. Count values can be set in byte or word units, and all functions are freely programmable.

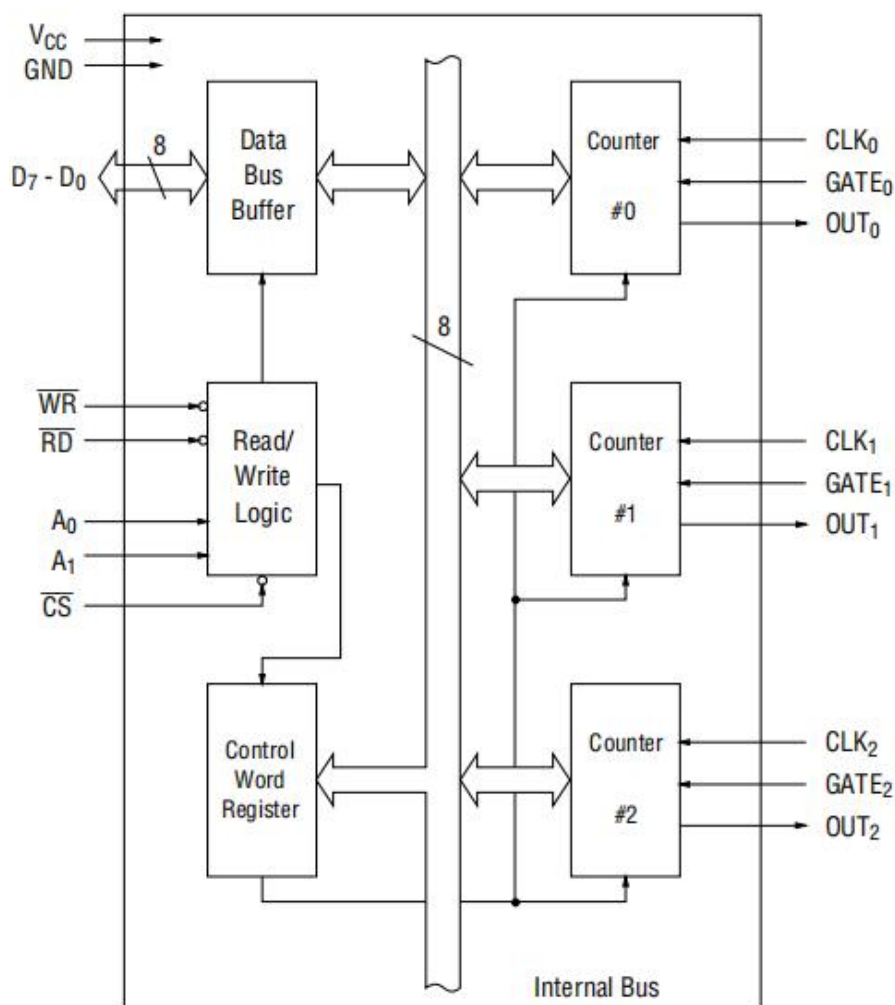
PIN CONFIGURATION



DESCRIPTION OF PIN FUNCTIONS

Pin Symbol	Name	Input/Output	Function
D ₇ - D ₀	Bidirectional Data Bus	Input/Output	Three-state 8-bit bidirectional data bus used when writing control words and count values, and reading count values upon reception of WR and RD signals from CPU.
CS	Chip Select Input	Input	Data transfer with the CPU is enabled when this pin is at low level. When at high level, the data bus (D ₀ thru D ₇) is switched to high impedance state where neither writing nor reading can be executed. Internal registers, however, remain unchanged.
RD	Read Input	Input	Data can be transferred from HG82C53 to CPU when this pin is at low level.
WR	Write Input	Input	Data can be transferred from CPU to HG82C53 when this pin is at low level.
A ₀ - A ₁	Address Input	Input	One of the three internal counters or the control word register is selected by A ₀ /A ₁ combination. These two pins are normally connected to the two lower order bits of the address bus.
CLK ₀ - 2	Clock Input	Input	Supply of three clock signals to the three counters incorporated in HG82C53.
GATE ₀ - 2	Gate Input	Input	Control of starting, interruption, and restarting of counting in the three respective counters in accordance with the set control word contents.
OUT ₀ - 2	Counter Output	Output	Output of counter output waveform in accordance with the set mode and count value.

FUNCTIONAL BLOCK DIAGRAM



ABSOLUTE MAXIMUM RATINGS

Parameter	Symbol	Condition	Rating	Units
Supply Voltage	V _{CC}	Respect to GND	-0.5 to +7	V
Input Voltage	V _{IN}		-0.5 to V _{CC} + 0.5	V
Output Voltage	V _{OUT}		-0.5 to V _{CC} + 0.5	V
Storage Temperature	T _{STG}	—	-55 to +150	°C
Power Dissipation	P _D	T _a = 25°C	0.9	W
Lead Temperature (Soldering, 10 seconds)	TL		260	°C

Absolute Maximum Ratings indicate limits beyond which damage to the device may occur. Operating Ratings indicate conditions for which the device is intended to be functional, but specific performance is not ensured.

OPERATING RANGES

Parameter	Symbol	Condition	Range	Unit
Supply Voltage	V_{CC}	$V_{IL} = 0.2\text{ V}$, $V_{IH} = V_{CC} - 0.2\text{ V}$, Operating Frequency 2.6 MHz	3 to 6	V
Operating Temperature	T_{OP}		-40 to +85	°C

RECOMMENDED OPERATING CONDITIONS

Parameter	Symbol	Min.	Typ.	Max.	Unit
Supply Voltage	V_{CC}	4.5	5	5.5	V
Operating Temperature	T_{op}	-40	+25	+85	°C
"L" Input Voltage	V_{IL}	-0.3	—	+0.8	V
"H" Input Voltage	V_{IH}	2.2	—	$V_{CC} + 0.3$	V

DC CHARACTERISTICS

Parameter	Symbol	Condition	Min.	Typ.	Max.	Unit
"L" Output Voltage	V_{OL}	$I_{OL} = 4\text{ mA}$	—	—	0.45	V
"H" Output Voltage	V_{OH}	$I_{OH} = -1\text{ mA}$	3.7	—	—	V
Input Leak Current	I_{LI}	$0 \leq V_{IN} \leq V_{CC}$	-10	—	10	μA
Output Leak Current	I_{LO}	$0 \leq V_{OUT} \leq V_{CC}$	-10	—	10	μA
Standby Supply Current	I_{CCS}	$\overline{GS} \geq V_{CC} - 0.2\text{ V}$ $V_{IH} \geq V_{CC} - 0.2\text{ V}$ $V_{IL} \leq 0.2\text{ V}$	—	—	100	μA
Operating Supply Current	I_{CC}	$t_{CLK} = 125\text{ ns}$ $C_L = 0\text{ pF}$	—	—	8	mA

$V_{CC} = 4.5\text{ V to } 5.5\text{ V}$ $T_a = -40^\circ\text{C to } +85^\circ\text{C}$

AC CHARACTERISTICS

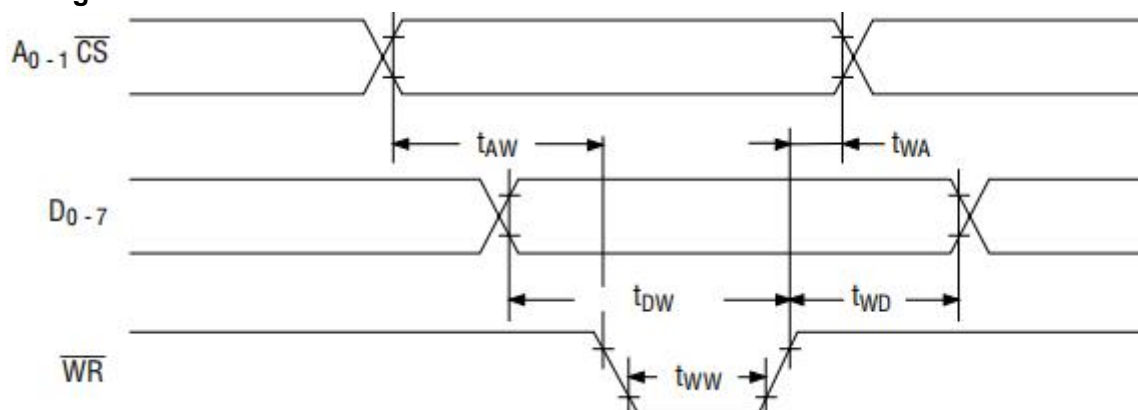
($V_{CC} = 4.5\text{ V to }5.5\text{ V}$, $T_a = -40\text{ to }+85^{\circ}\text{C}$)

Parameter	Symbol	HG82C53		Unit	Condition				
		Min.	Max.						
Address Set-up Time before Reading	t _{AR}	30	—	ns	Read Cycle	C _L = 150 pF			
Address Hold Time after Reading	t _{RA}	0	—	ns					
Read Pulse Width	t _{RR}	150	—	ns					
Read Recovery Time	t _{RVR}	200	—	ns					
Address Set-up Time before Writing	t _{AW}	0	—	ns	Write Cycle		C _L = 150 pF		
Address Hold Time after Writing	t _{WA}	20	—	ns					
Write Pulse Width	t _{WW}	150	—	ns					
Data Input Set-up Time before Writing	t _{DW}	100	—	ns					
Data Input Hold Time after Writing	t _{WD}	20	—	ns					
Write Recovery Time	t _{RVW}	200	—	ns					
Clock Cycle Time	t _{CLK}	125	D.C.	ns	Clock and Gate Timing			C _L = 150 pF	
Clock "H" Pulse Width	t _{PWH}	60	—	ns					
Clock "L" Pusle Width	t _{PWL}	60	—	ns					
"H" Gate Pulse Width	t _{GW}	50	—	ns					
"L" Gate PUlse Width	t _{GL}	50	—	ns					
Gate Input Set-up Time before Clock	t _{GS}	50	—	ns					
Gate Input Hold Time after Clock	t _{GH}	50	—	ns					
Output Delay Time after Reading	t _{RD}	—	120	ns					Delay Time
Output Floating Delay Time afterReading	t _{DF}	5	90	ns					
Output Delay Time after Gate	t _{ODG}	—	120	ns					
Output Delay Time after Clock	t _{OD}	—	150	ns					
Output Delay Time after Address	t _{AD}	—	180	ns					

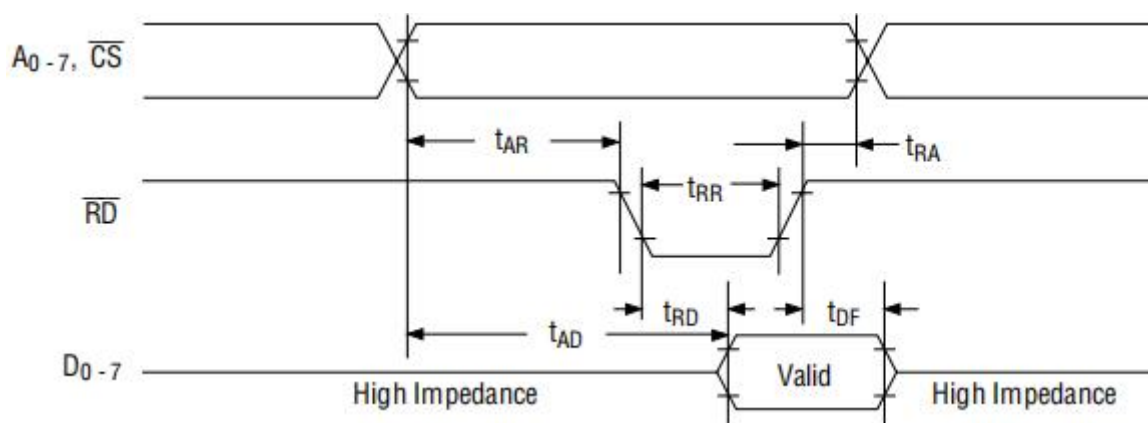
Note: Timing measured at $V_L = 0.8\text{ V}$ and $V_H = 2.2\text{ V}$ for both inputs and outputs.

TIMING CHART

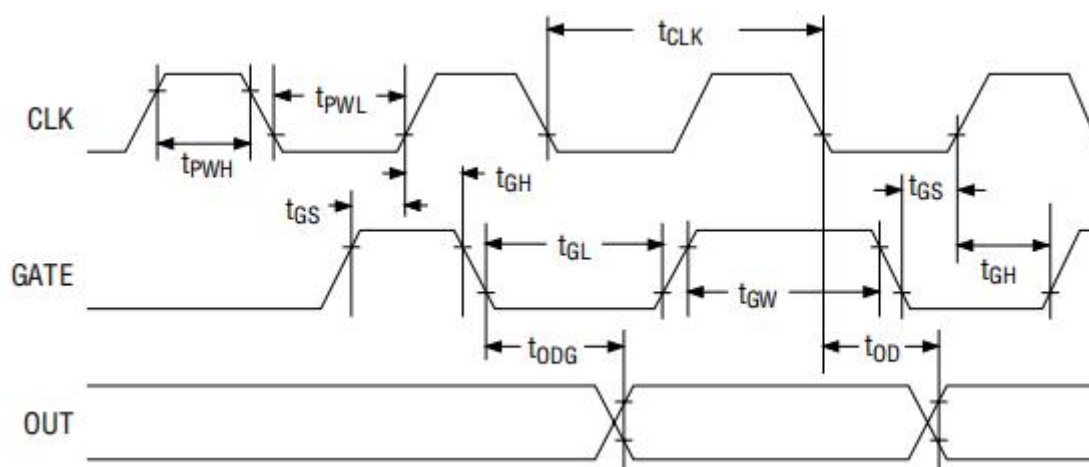
WriteTiming



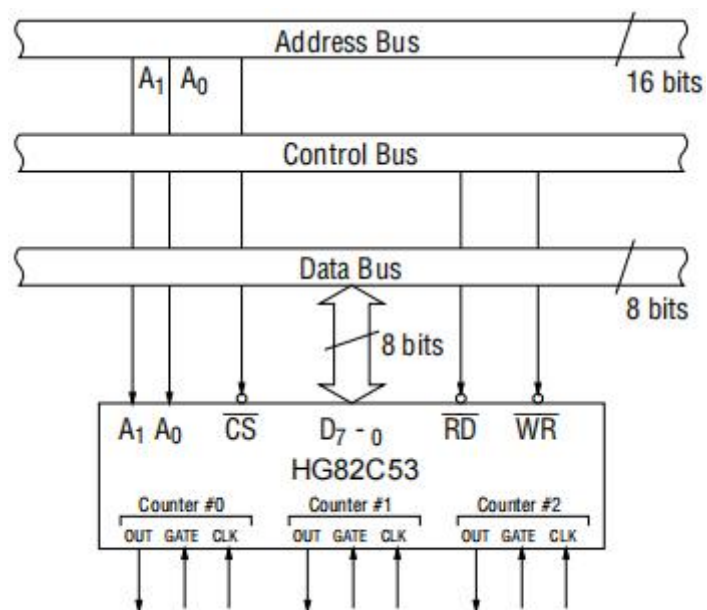
Read Timing



Clock & Gate Timing



SYSTEM INTERFACING



DESCRIPTION OF BASIC OPERATIONS

Data transfers between the internal registers and the external data bus is outlined in the following table.

\overline{CS}	\overline{RD}	\overline{WR}	A_1	A_0	Function
0	1	0	0	0	Data Bus to Counter #0 Writing
0	1	0	0	1	Data Bus to Counter #1 Writing
0	1	0	1	0	Data Bus to Counter #2 Writing
0	1	0	1	1	Data Bus to Control Word Register Writing
0	0	1	0	0	Data Bus from Counter #0 Reading
0	0	1	0	1	Data Bus from Counter #1 Reading
0	0	1	1	0	Data Bus from Counter #2 Reading
0	0	1	1	1	Data Bus High Impedance Status
1	×	×	×	×	
0	1	1	×	×	

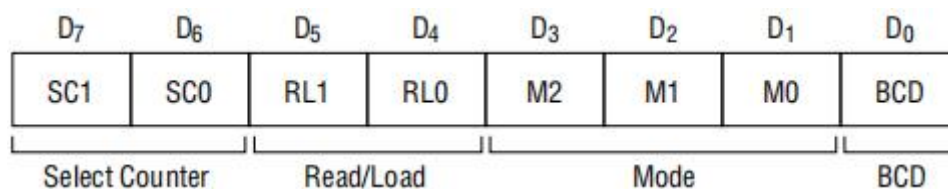
× denotes "not specified".

DESCRIPTION OF OPERATION

HG82C53 functions are selected by a control word from the CPU. In the required program sequence, the control word setting is followed by the count value setting and execution of the desired timer operation.

Control Word and Count Value Program

Each counter operation mode is set by control word programming. The control word format is out-lined below.



($\overline{CS}=0$, A_0 , $A_1=1$, $\overline{RD}=1$, $\overline{WR}=0$)

- **Select Counter (SC0, SC1):** Selection of set counter

SC1	SC0	Set Contents
0	0	Counter #0 Selection
0	1	Counter #1 Selection
1	0	Counter #2 Selection
1	1	Illegal Combination

- **Read/Load (RL1, RL0):** Count value Reading/Loading format setting

RL1	RL0	Set Contents
0	0	Counter Latch Operation
0	1	Reading/Loading of Least Significant Byte (LSB)
1	0	Reading/Loading of Most Significant Byte (MSB)
1	1	Reading/Loading of LSB Followed by MSB

Mode (M2, M1, M0): Operation waveform mode setting

M2	M1	M0	Set Contents
0	0	0	Mode 0 (Interrupt on Terminal Count)
0	0	1	Mode 1 (Programmable One-Shot)
×	1	0	Mode 2 (Rate Generator)
×	1	1	Mode 3 (Square Wave Generator)
1	0	0	Mode 4 (Software Triggered Strobe)
1	0	1	Mode 5 (Hardware Triggered Strobe)

× denotes "not specified".

BCD: Operation count mode setting

BCD	Set Contents
0	Binary Count (16-bit Binary)
1	BCD Count (4-decade Binary Coded Decimal)

After setting Read/Load, Mode, and BCD in each counter as outlined above, next set the desired count value. (In some Modes, counting is started immediately after the count value has been written). This count value setting must conform with the Read/Load format set in advance. Note that the internal counters are reset to 0000H during control word setting. The counter value (0000H) can't be read.

If the two bytes (LSB and MSB) are written at this stage (RL0 and RL1 = 1,1), take note of the following precaution.

Although the count values may be set in the three counters in any sequence after the control word has been set in each counter, count values must be set consecutively in the LSB - MSB order in any one counter.

Example of control word and count value setting

Counter #0: Read/Load LSB only, Mode 3, Binary count, count value 3H
Counter #1: Read/Load MSB only, Mode 5, Binary count, count value AA00H
Counter #2: Read/Load LSB and MSB, Mode 0, BCD count, count value 1234

MVI A, 1EH OUT n3	Counter #0 control word setting
MVI A, 6AH OUT n3	Counter #1 control word setting
MVI A, B1H OUT n3	Counter #2 control word setting
MVI A, 03H OUT n0	Counter #0 control value setting
MVI A, AAH OUT n1	Counter #1 control value setting
MVI A, 34H OUT n2 MVI A, 12H OUT n2	Counter #2 count value setting (LSB then MSB)

Notes: n0: Counter #0 address
n1: Counter #1 address
n2: Counter #2 address
n3: Control word register address

The minimum and maximum count values which can be counted in each mode are listed below.

Mode	Min.	Max,	Remarks
0	1	0	0 executes 10000H count (ditto in other modes)
1	1	0	—
2	2	0	1 cannot be counted
3	2	1	1 executes 10001H count
4	1	0	—
5	1	0	—

Mode Definition

Mode 0 (terminal count)

The counter output is set to “L” level by the mode setting. If the count value is then written in the counter with the gate input at “H” level (that is, upon completion of writing the MSB when there are two bytes), the clock input counting is started. When the terminal count is reached, the output is switched to “H” level and is maintained in this status until the control word and count value are set again.

Counting is interrupted if the gate input is switched to “L” level, and restarted when switched back to “H” level. When Count Values are written during counting, the operation is as follows:

- 1-byte Read/Load —When the new count value is written, counting is stopped immediately, and then restarted at the new count value by the next clock.
- 2-byte Read/Load —When byte 1 (LSB) of the new count value is written, counting is stopped immediately. Counting is restarted at the new count value when byte 2 (MSB) is written.

Mode 1 (programmable one-shot)

The counter output is switched to “H” level by the mode setting. Note that in this mode, counting is not started if only the count value is written. Since counting has to be started in this mode by using the leading edge of the gate input as a trigger, the counter output is switched to “L” level by the next clock after the gate input trigger. This “L” level status is maintained during the set count value, and is switched back to “H” level when the terminal count is reached.

Once counting has been started, there is no interruption until the terminal count is reached, even if the gate input is switched to “L” level in the meantime. And although counting continues even if a new count value is written during the counting, counting is started at the new count value if another trigger is applied by the gate input.

Mode 2 (rate generator)

The counter output is switched to “H” level by the mode setting. When the gate input is at “H” level, counting is started by the next clock after the count value has been written. And if the gate input is at “L” level, counting is started by using the rising edge of the gate input as a trigger after the count value has been set.

An “L” level output pulse appears at the counter output during a single clock duration once every n clock inputs where n is the set count value. If a new count value is written during while counting is in progress, counting is started at the new count value following output of the pulse currently being counted. And if the gate input is switched to “L” level during counting, the counter output is forced to switch to “H” level, the counting being restarted by the rising edge of the gate input.

Mode 3 (square waveform rate generator)

The counter output is switched to “H” level by the mode setting. Counting is started in the same way as described for mode 2 above.

The repeated square wave output appearing at the counter output contains half the number of counts as the set count value. If the set count value (n) is an odd number, the repeated square wave output consists of only $(n+1)/2$ clock inputs at “H” level and $(n-1)/2$ clock inputs at “L” level.

If a new count value is written during counting, the new count value is reflected immediately after the change (“H” to “L” or “L” to “H”) in the next counter output to be executed. The counting operation at the gate input is done the same as in mode 2.

Mode 4 (software trigger strobe)

The counter output is switched to "H" level by the mode setting. Counting is started in the same way as described for mode 0. A single "L" pulse equivalent to one clock width is generated at the counter output when the terminal count is reached.

This mode differs from 2 in that the "L" level output appears one clock earlier in mode 2, and that pulses are not repeated in mode 4. Counting is stopped when the gate input is switched to "L" level, and restarted from the set count value when switched back to "H" level.

Mode 5 (hardware trigger strobe)

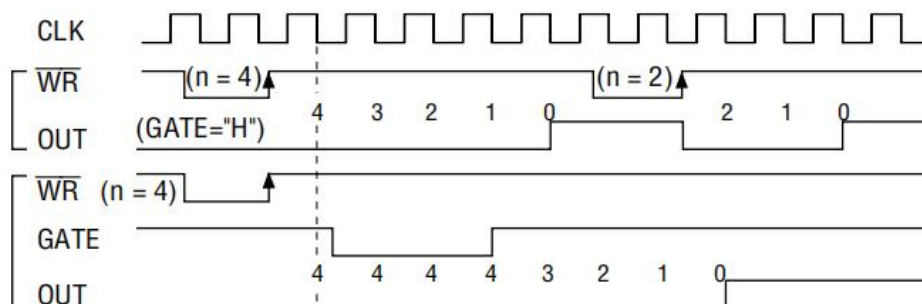
The counter output is switched to "H" level by the mode setting. Counting is started, and the gate input used, in the same way as in mode 1.

The counter output is identical to the mode 4 output.

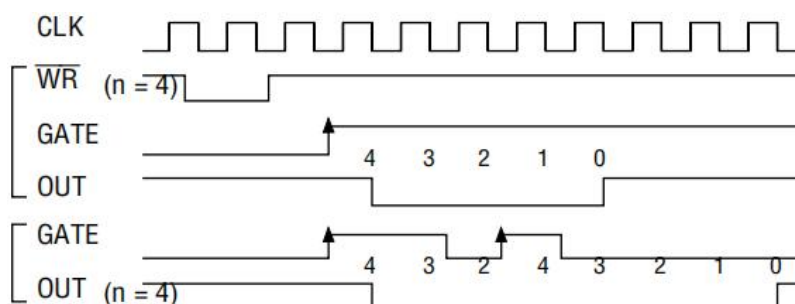
The various roles of the gate input signals in the above modes are summarized in the following table.

Mode \ Gate	"L" Level Falling Edge	Rising Edge	"H" Level
0	Counting not possible		Counting possible
1		(1) Start of counting (2) Retriggering	
2	(1) Counting not possible (2) Counter output forced to "H" level	Start of counting	Counting possible
3	(1) Counting not possible (2) Counter output forced to "H" level	Start of counting	Counting possible
4	Counting not possible		Counting possible
5		(1) Start of counting (2) Retriggering	

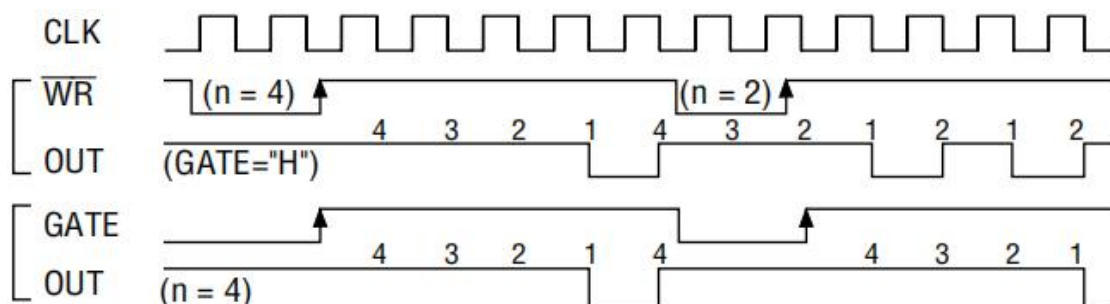
Mode 0



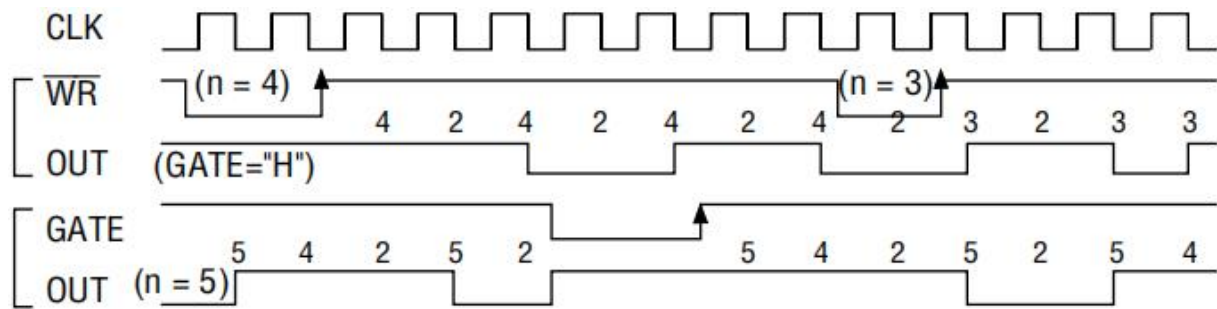
Mode 1



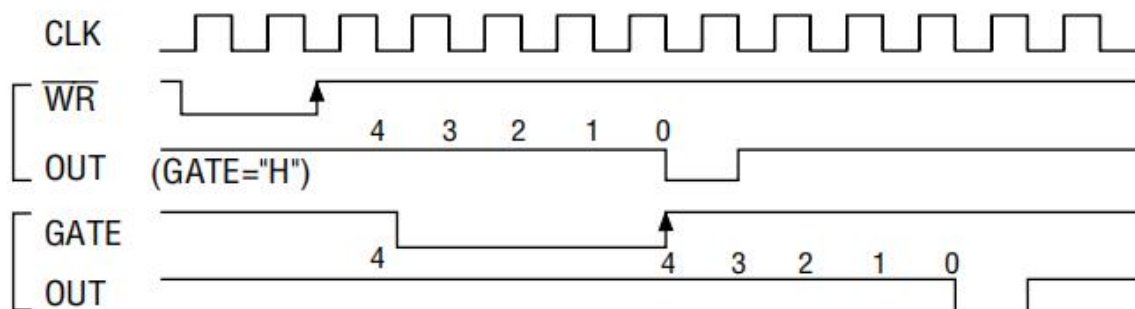
Mode 2



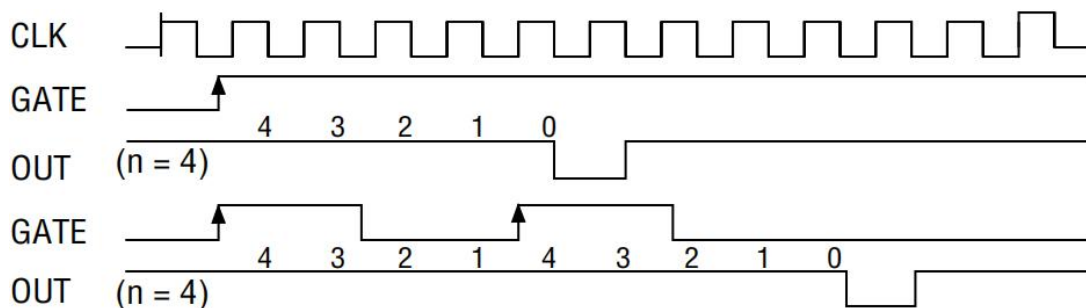
Mode 3



Mode 4



Mode 5



Note: "n" is the value set in the counter.

Figures in these diagrams refer to counter values.

Reading of Counter Values

HG82C53 counting is down-counting, the counting being in steps of 2 in mode 3.

Counter values can be read during counting by (1) direct reading, and (2) counter latching ("read on the fly").

Direct reading

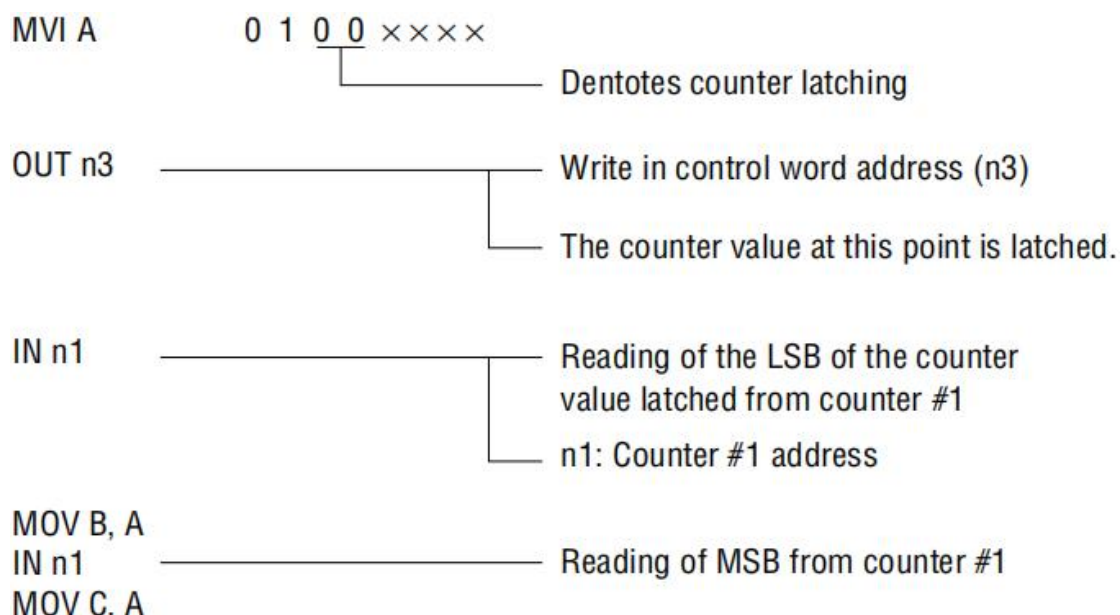
Counter values can be read by direct reading operations.

Since the counter value read according to the timing of the \overline{RD} and CLK signals is not guaranteed, it is necessary to stop the counting by a gate input signal, or to interrupt the clock input temporarily by an external circuit to ensure that the counter value is correctly read.

Counter latching

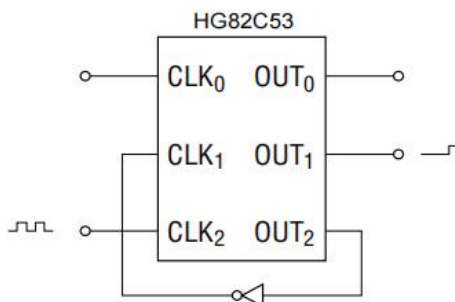
In this method, the counter value is latched by writing counter latch command, thereby enabling a stable value to be read without effecting the counting in any way at all. An example of a counter latching program is given below.

Counter latching executed for counter #1 (Read/Load 2-byte setting)



Example of Practical Application

HG82C53 used as a 32-bit counter.



Use counter #1 and counter #2

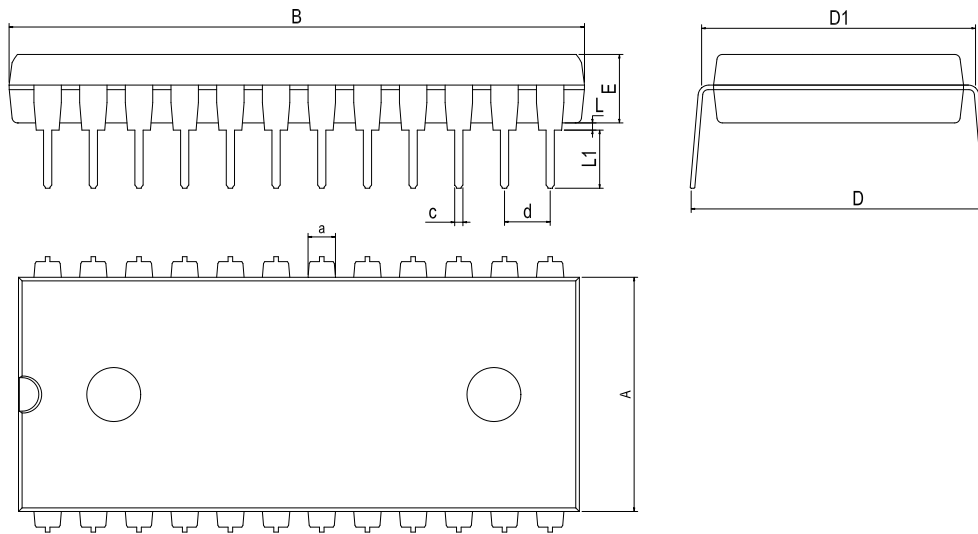
Counter #1: mode 0, upper order 16-bit counter value

Counter #2: mode 2, lower order 16-bit counter value

This setting enables counting up to a maximum of 232.

PHYSICAL DIMENSIONS

DIP-24



Dimensions In Millimeters(DIP-24)										
Symbol:	A	B	D	D1	E	L	L1	a	c	d
Min:	13.21	31.24	16.00	14.99	3.71	0.38	3.00	1.45	0.38	2.54 BSC
Max:	14.22	32.26	17.28	15.49	3.91	0.55	3.60	1.65	0.53	

Revision History

REVISION NUMBER	DATE	REVISION	PAGE
V1.0	2016-8	New	1-19
V1.1	2020-9	Update encapsulation type、Add annotation for Maximum Ratings.	1、 3
V1.2	2024-11	Update Lead Temperature	3

IMPORTANT STATEMENT:

Huaguan Semiconductor reserves the right to change its products and services without notice. Before ordering, the customer shall obtain the latest relevant information and verify whether the information is up to date and complete. Huaguan Semiconductor does not assume any responsibility or obligation for the altered documents.

Customers are responsible for complying with safety standards and taking safety measures when using Huaguan Semiconductor products for system design and machine manufacturing. You will bear all the following responsibilities: Select the appropriate Huaguan Semiconductor products for your application; Design, validate and test your application; Ensure that your application meets the appropriate standards and any other safety, security or other requirements. To avoid the occurrence of potential risks that may lead to personal injury or property loss.

Huaguan Semiconductor products have not been approved for applications in life support, military, aerospace and other fields, and Huaguan Semiconductor will not bear the consequences caused by the application of products in these fields. All problems, responsibilities and losses arising from the user's use beyond the applicable area of the product shall be borne by the user and have nothing to do with Huaguan Semiconductor, and the user shall not claim any compensation liability against Huaguan Semiconductor by the terms of this Agreement.

The technical and reliability data (including data sheets), design resources (including reference designs), application or other design suggestions, network tools, safety information and other resources provided for the performance of semiconductor products produced by Huaguan Semiconductor are not guaranteed to be free from defects and no warranty, express or implied, is made. The use of testing and other quality control technologies is limited to the quality assurance scope of Huaguan Semiconductor. Not all parameters of each device need to be tested.

The documentation of Huaguan Semiconductor authorizes you to use these resources only for developing the application of the product described in this document. You have no right to use any other Huaguan Semiconductor intellectual property rights or any third party intellectual property rights. It is strictly forbidden to make other copies or displays of these resources. You should fully compensate Huaguan Semiconductor and its agents for any claims, damages, costs, losses and debts caused by the use of these resources. Huaguan Semiconductor accepts no liability for any loss or damage caused by infringement.