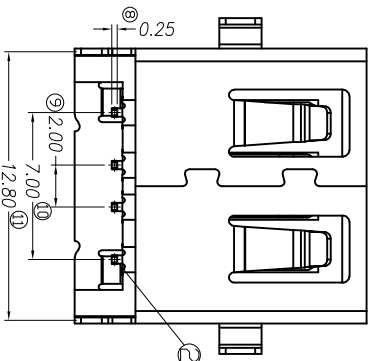
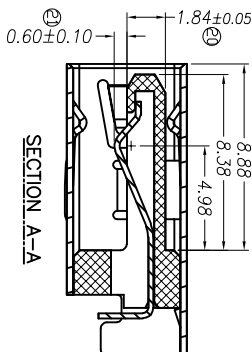
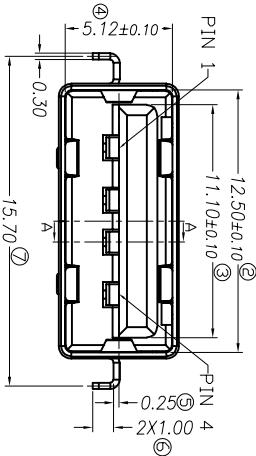
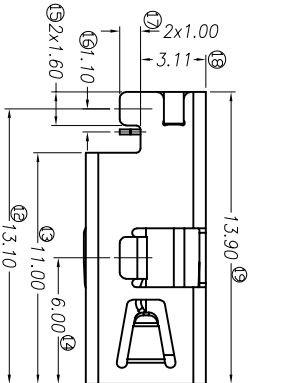


RECOMMEND P.C.B LAYOUT(COMPONENT SIDE)
TOLERANCE FOR PCB LAYOUT IS ± 0.05

SPECIFICATIONS:

- 1.ELECTRICAL CHARACTERISTICS:
 - 1-1. CONTACT RESISTANCE: $30m\Omega$ MAX(INITIAL)
AFTER LIFE TEST $50m\Omega$.
 - 1-2. DIELECTRIC WITHSTANDING VOLTAGE: $500V$ AC FOR ONE MINUTE.
 - 1-3. INSULATION RESISTANCE: $1000M\Omega$ MIN.
MEASURED BY $500V$ DC.
- 2.MECHANICAL CHARACTERISTICS:
 - 2-1. INSERTION FORCE: 3.5 Kgf MAX;
 - 2-2. WITHDRAWAL FORCE: 1.0 Kgf MIN;
3. LIFE TEST: 5000 CYCLES.



3	外壳	1	040-002A-0132	SUS430 T=0.3mm	ALL OVER IN 50-100u"
2	端子	4	020-000A-0115	C5191R-EH1=0.25mm	G/F ON CONTACT ARER Sn 100 u"ON SOLDER AREA ALL OVER IN 50 u"Min
1	本体	1	001-0004-0155	LCP E130I U194 V-0	BLACK
序号	零件	数量	料号	材质规格	电镀&颜色

REV.	REVISION RECORD	DATE	GENERAL TOLERANCES	SCALE: 1:1	NAME	DATE	PART NO:
X1	DRAFT VERSION	04/19' 2017	LINEAR	ANGLES	APPROVED		WUSF10304-0A01
A	取消弹片凸包&加宽焊脚折弯宽度	2018. 01. 25	0.0 ± 0.30	X REF: 6'	DESIGNER		DWG NO:
B	WN-220712-0209:更新格式	2022. 07. 11	UNIT: MM	0.00 ± 0.20	X' $\pm 3'$		
1			SIZE: A4	0.000 ± 0.10	X'X' $\pm 2'$	DRAWN	

广东富盈兴业精密科技实业有限公司

WUSF10304-0A01

USB2.0 RECEPTACLE A TYPE

CH0.25MM

REV: B

SHEET: 1/1