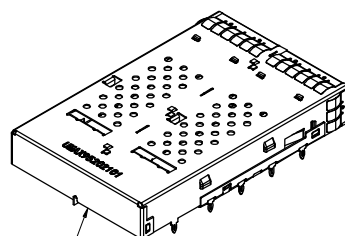
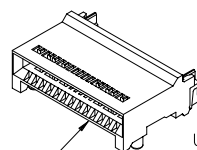


3. DIMENSION MARKED WITH "ST" SHALL BE MONITORED AND CONTROLLED. THE VENDOR MUST PROVIDE THE METHOD OF CONTROL AND THEIR MEASUREMENT DATA WITH EACH SHIPMENT.



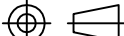
NO REAR PINS P#: UMAX95202101 SHOWN



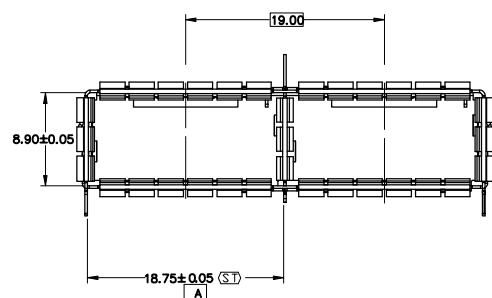
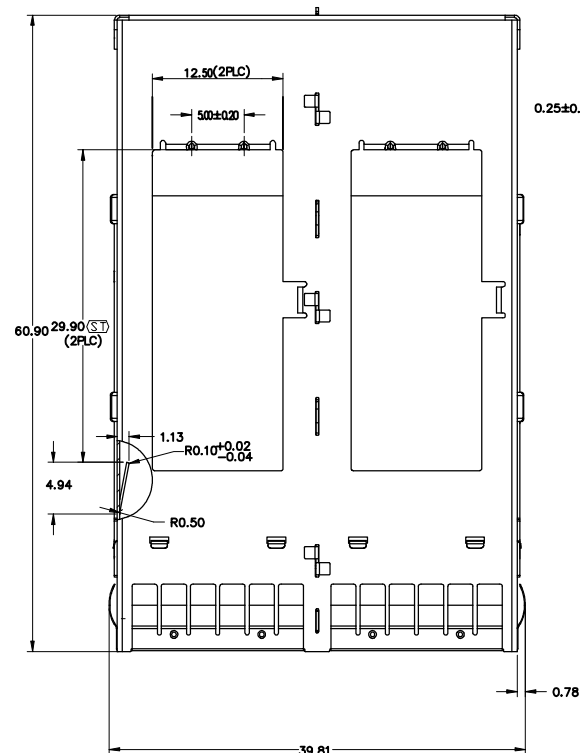
UMAX952L0301  
SHOWN ON THIS VIEW  
SCALE 2 : 1

AND FORM HOOKS TO DIMENSIONS SHOWN ON SHEET 2.

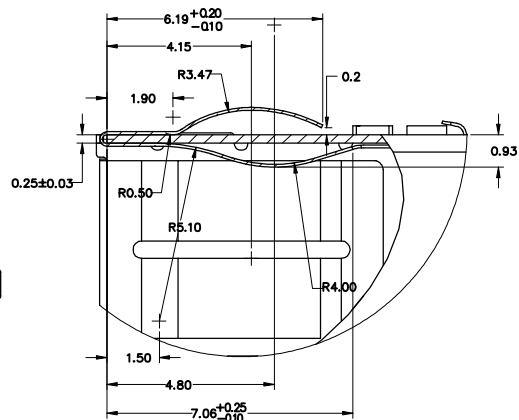
6	SIDE EMI CLIPS	2
5	MIDDLE EMI CLIPS	1
4	TOP/BOTTOM EMI CLIPS	4
3	MIDDLE WALL	1
2	BOTTOM CAGE	1
1	TOP CAGE	1
ITEM NO.	DESCRIPTION	QTY.

TITLE: zQSFP/QSFP28 CAGE SUB-ASSEMBLY WITH MODIFIED SPRING CLIPS				
PART NO.		SEE NOTE1		
DWG NO.		C-UMAX92D0210		
	UNITS	SCALE	SHEET	REV
	MM	1 : 1	1 OF 3	A0

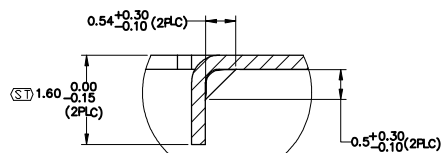
A0	-----	Jahnnny	Aug 02/25
REV	ECN NO.	NAME	DATE



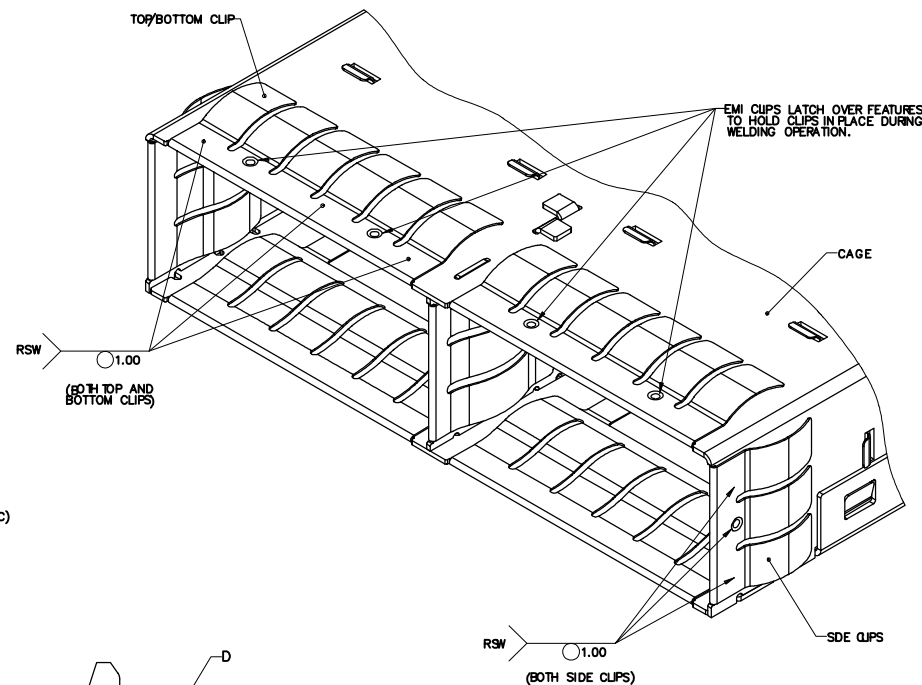
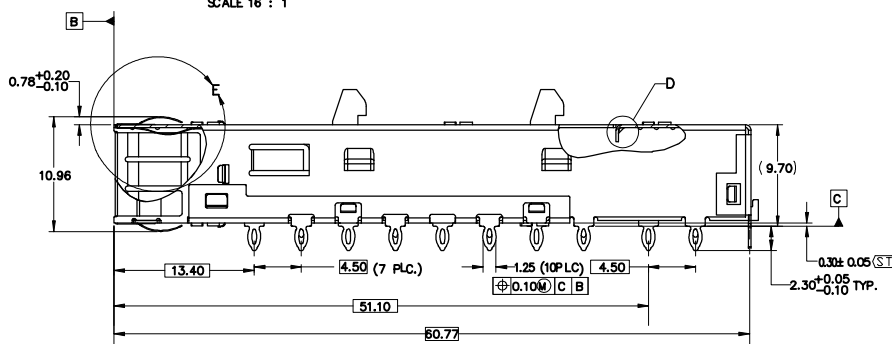
P#: UMAX95212101 SHOWN ON THIS PAGE



DETAIL E  
SCALE 10 : 1



DETAIL D  
SCALE 16 : 1

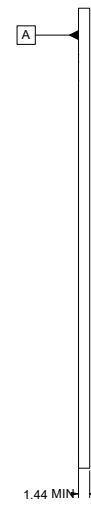


TOLERANCE		<b>UMax conn</b> 东莞市友贸实业有限公司 DONGGUAN UMAX ENTERPRISE LIMITED	
LINEAR	ANGLES		
X±0.40	X°± 3°	APPD: Jason	MAT'L:
.X±0.30	.X°± 2°	CHKD: Schumi	FINISH:
.XX±0.20	.XX°± 1°	DRWN: Lei Songping	Q'TY:
.XXX±0.10	.XXX°± 0.5°		

TITLE: zQSFP/QSFP28 CAGE SUB-ASSEMBLY WITH MODIFIED SPRING CLIPS				
PART NO.		SEE NOTE1		
DWG NO.		C-UMAX92D0210		
	UNITS	SCALE	SHEET	REV
	MM	1 : 1	2 OF 3	A0


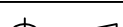
REV	ECN NO.	NAME	DATE
	SEE SHEE 1		

CUSTOMER



NOTES:

1. DATUMS X AND Y ESTABLISHED BY CUSTOMER'S FIDUCIAL.
2. LOCATION OF EDGE OF PCB IS APPLICATION SPECIFIC.
3. FINISHED HOLE SIZE.

TOLERANCE		 <b>东莞市友贸实业有限公司</b> <b>DONGGUAN UMAX ENTERPRISE LIMITED</b>		TITLE: zQSFP/QSFP28 CAGE SUB-ASSEMBLY WITH MODIFIED SPRING CLIPS				
LINEAR	ANGLES			PART NO. SEE NOTE1				
X $\pm$ 0.40	X $\pm$ 3°	APPD: Jason	MAT'L:	DWG NO. C-UMAX92D0210				
.X $\pm$ 0.30	.X $\pm$ 2°	CHKD: Schumi	FINISH:		UNITS	SCALE	SHEET	REV
.XX $\pm$ 0.20	.XX $\pm$ 1°	DRWN:Lei Songping	Q'TY:		MM	1 : 1	3 OF 3	A0
.XXX $\pm$ 0.10	.XXX $\pm$ 0.5°							