

- PoE transformer .
- Operates in condition mode with 36V-72V input.
- Switching frequency to 250KHz.
- Class B Insulation System .
- Terminations RoHS tin-silver-copper over tin over nickel over phos bronze. Other terminations available at additional cost.
- Operating Temperature -40°C to +85°C. (including coil temperature rise due to self-generated heat).
- Storage Temperature -40°C to +125°C.

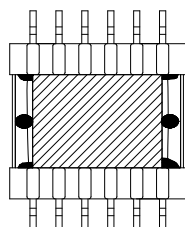
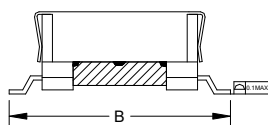
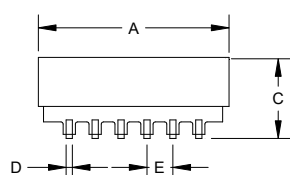
SIZE: EFD20 6+6

| (LinkPower) Part number | Inductance ±10% (μH) | Inductance IPK 2.6A (μH) | Leakage Inductance max(μH) | DCR Max(m Ohms) | | | Turns ratio Pri:Sec:Aux | Isolation (Vrms)60Hz/1Sec | |
|-----------------------------|-------------------------|-----------------------------|----------------------------------|-----------------|-----|-----|----------------------------|------------------------------|------------|
| | | | | Pri | Sec | Aux | | Pri,Aux-Sec | Coil -core |
| EFD-021SG T | 42 | 37.8 Min | 0.65 | 61 | 15 | 195 | 1:0.33:0.33 | 1500 | 500 |

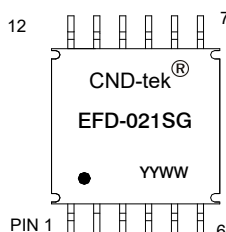
* Packing :this mark is used generally unless specified customer.

1. All data is referenced to 25°C ambient.
2. Inductance is for primary measured at 250kHz/0A bias current/0.1 Vrms.
3. Leakage Inductance is for the primary, measured at 250KHz/0A bias current /0.1Vrms while all other windings shorted together.
4. Appearance dimensions(mm):

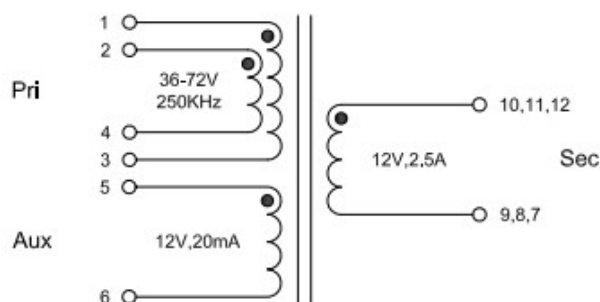
Schematics:



BOTTOM VIEW



TOP VIEW



| | |
|---|----------|
| A | 22 Max |
| B | 30 Max |
| C | 12.5 Max |
| D | 0.7±0.15 |
| E | 3.0±0.3 |