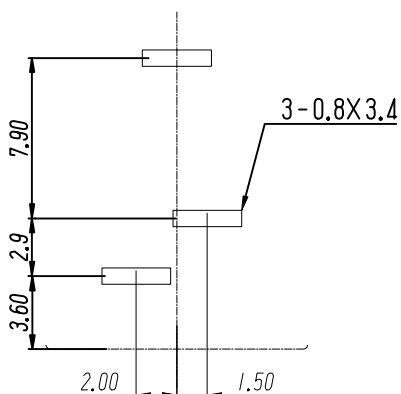
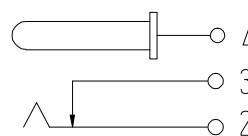


PCB LAYOUT
TOP VIEW (TOLERANCE: ± 0.05)



SCHEMATIC



技术特性:

使用条件: $-30\sim 70^{\circ}$

额定负荷: DC30V 1A

接触电阻: $\leq 0.02\Omega$

绝缘电阻: $\geq 100M\Omega$ DC250V

耐压: AC250V(50Hz) 1min

插拔力: 3~15N

寿命: 5000次

6	盖板	1	PA66	黄
5	插针	1	H59黄铜棒	铜锡
4	平片	1	H62黄铜带(Y) $\delta=0.30\text{mm}$	铜锡
3	弯片	1	H62黄铜带(Y) $\delta=0.30\text{mm}$	铜锡
2	弹片	1	磷铜	磷铜
1	底座	1	PA66	黑
序号	名称	数量	材料	备注

GENERAL TOLERANCES			
0.X	± 0.30	X°	$\pm 3^{\circ}$
0.XX	± 0.20		
0.XXX	± 0.10	X.X°	$\pm 1^{\circ}$
UNIT	SIZE	SCALE	
MM	A4	1:1	

DRAWN		C	TITLE: 电源插座
DESIGN			PART NO. DC-015-2.0-CU
CHECKED			PRODUCT NO.
APPROVED			DRAWING NO.
UNIT: mm SCALE: 1:1 REV: 01-1 SHT: 1 OF 1			

浙江创都电子科技有限公司

ECN NO.	REV	DATE	DESCRIPTION	MDF'D	APP'D
	01	2021.12.22	NEW DRAWING RELEASE		