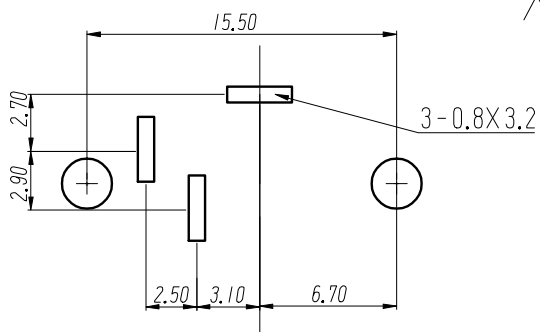
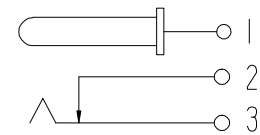


PCB LAYOUT
TOP VIEW (TOLERANCE:±0.05)



SCHEMATIC



技术特性:

使用条件: -30~70°
额定负荷: DC30V 0.5A
接触电阻: ≤0.03 Ω
绝缘电阻: ≥100M Ω DC250V
耐 压: AC500V(50Hz) /min
插 拔 力: 3~20N
寿 命: 5000次

6	盖 板	1	PBT	黄
5	插 针	1	H59黄铜棒	铜锡
4	平 片	1	H62黄铜带(Y) δ=0.30mm	铜锡
3	弯 片	1	H62黄铜带(Y) δ=0.30mm	铜锡
2	弹 片	1	65Mn 锰钢带δ=0.25mm	锡梯
1	基 座	1	PBT	黑
序号	名 称	数量	材 料	备 注

GENERAL TOLERANCES			
0.X	±0.30	X°	±3°
0.XX	±0.20		
0.XXX	±0.10	X.X°	±1°
UNIT	SIZE	SCALE	
MM	A4	1:1	

DRAWN		C	TITLE: 电源插座
DESIGN			PART NO. DC-017-2.0-MN
CHECKED			PRODUCT NO.
APPROVED			DRAWING NO.
UNIT: mm SCALE: 1:1 REV: 01-1 SHT: 1 OF 1			

浙江创都电子科技有限公司

ECN NO.	REV	DATE	DESCRIPTION	MDF'D	APP'D
	01	2021.12.22	NEW DRAWING RELEASE		