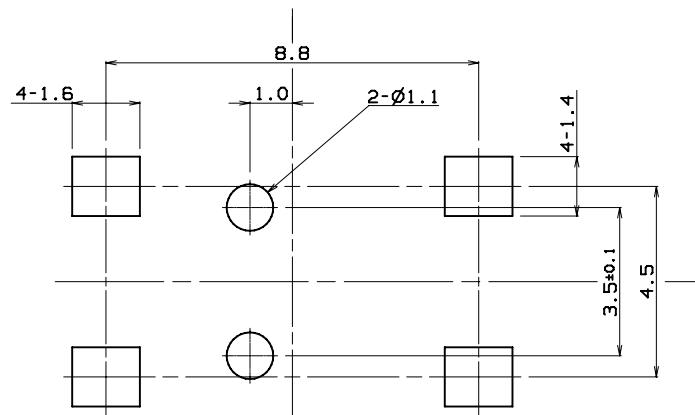
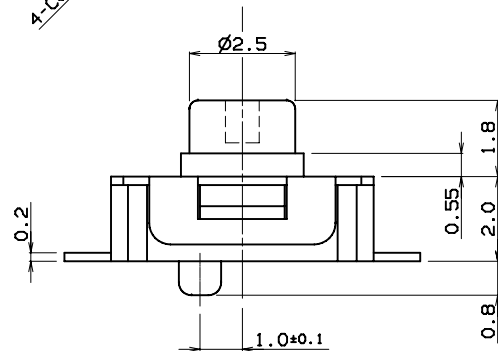
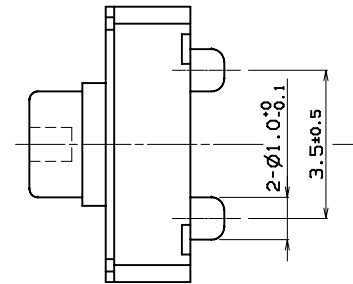
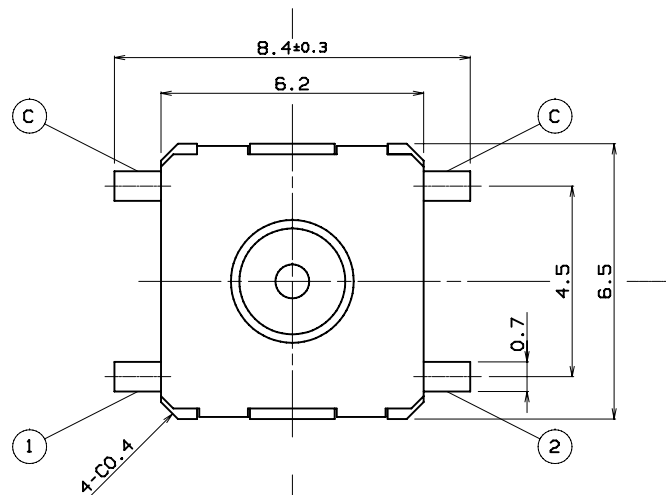
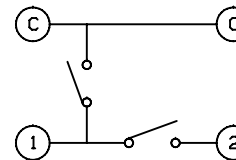


MODEL NO	CODE	O/FORCE	STEM COLOR	REMARKS
P 2100SW	12B97000	(1st)100±40gf (2nd)250±80gf	IVORY	

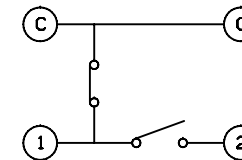


P.C.B MOUNTING PATTERN

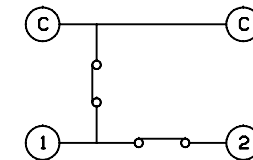
NORMAL POSITION



1ST MOVEMENT



2ND MOVEMENT



CIRCUIT DIAGRAM

NOTE

- 1.RATING : DC 30V, 20mA
- 2.CONTACT RESISTANCE : 200mΩ Max
- 3.STROKE : 1ST - 0.3±0.1, 2ND - 0.55±0.15
- 4.LIFE CYCLE : 10,000
- 5.GENERAL TOLERANCE : ±0.3
- 6.MANUFACTURING SPECIFICATION WOULD BE ACCORDANCE WITH JT 0122

No.	PART NAME	Q'TY	MATERIAL	S I Z E	TREAT.	REMARKS
5			3RD ANGLE PROJECTION	UNIT m/m	SCALE 5 1	MODEL YQCKG-P2100SW
4			APPROVED	CHECKED	DESIGNED	DWG. NAME ASS'Y DIAGRAM
3						DWG. NO.
2						
1						
NO.	DATE	NOTE	SIGN			

	SPECIFICATION	Page : 1 / 4
	DOUBLE ACTION SWITCH	

1. GENERAL

1.1 Application : This specification is applied to low current circuit tactile switch for electronic equipment.

1.2 Operating temperature range : -20~70℃, 45~85% RH

1.3 Storage temperature range : -30~80℃ However, 96 hours maximum for continuous storage over a range
-20~-30℃ and a range 70~80℃

1.4 Test conditions : The standard test conditions shall be 5~35℃ in temperature, 45~85% RH and 860~1060mbar
in atmospheric pressure. Should any doubt arise in judgement, test shall be conducted
at 20±2℃, 65±5% RH and 860~1060mbar.

2. RATED VOLTAGE AND CURRENT.

DC 30V 20mA

3. ELECTRICAL PERFORMANCE

	PROPERTY	TEST CONDITIONS	PERFORMANCE
3.1	Contact arrangement		*1 pole, 2 throw
3.2	Contact resistance	Measured at DC 5V 10mA or by ohmmeter allowing a small current at 1KHz with a load of twice of the actuating force.	*less than 200mΩ
3.3	Insulation resistance	DC 100V is applied between across terminals and between terminals and cover for 1 minute ± 5 seconds.	*greater than 50MΩ
3.4	Dielectric strength	AC 250V (50~60Hz) is applied between across terminals and between terminals and cover for 1 minute.	*No insulation defect shall be observed.
3.5	Bounce	Measured by lightly striking the center of the stem at a rate of 3 operations/sec..	*less than 10m sec

						APPD	CHKD	DSGD	TITLE
									YQCKG-P2100SW
									DOCUMENT
ZONE	SYMB	DATE	APPD	CHKD	DSGD				0122 NO.

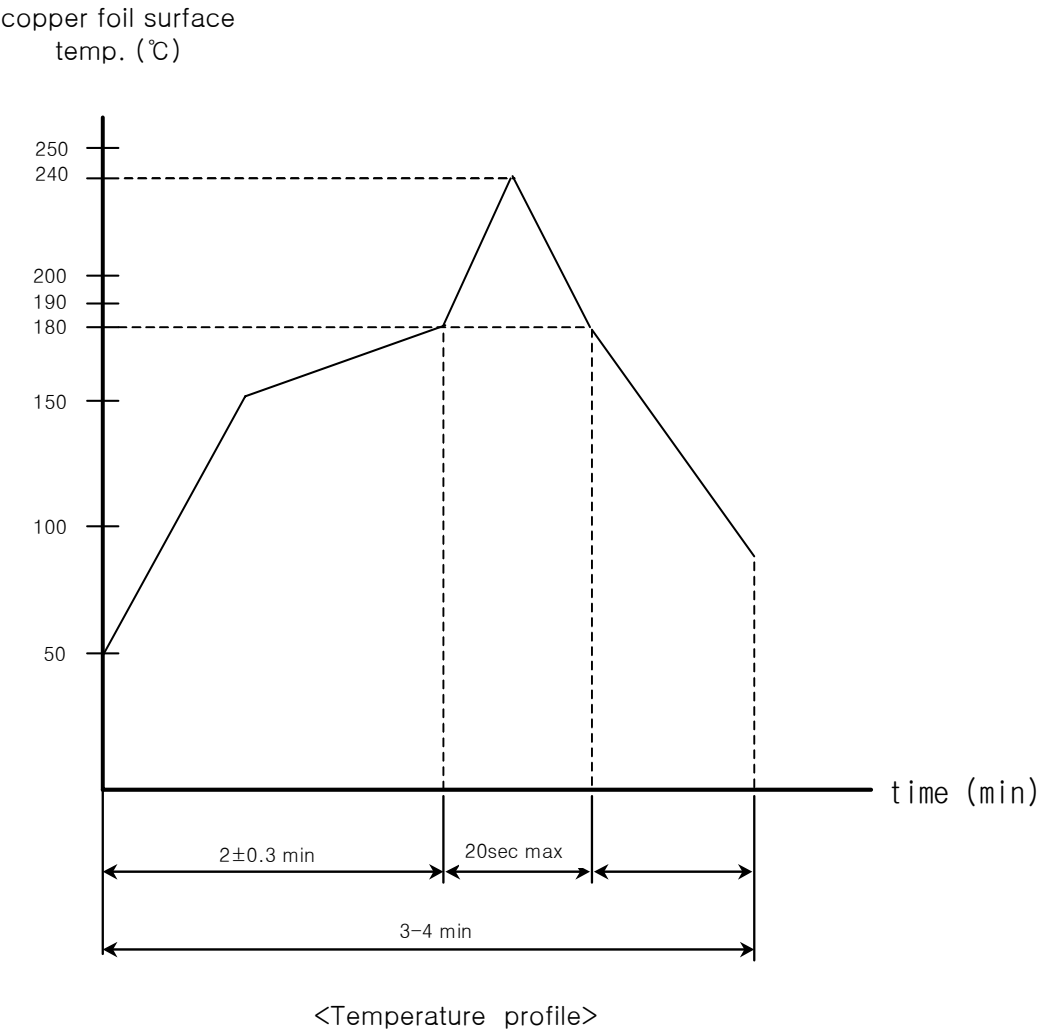
	SPECIFICATION	Page : 4 / 4
	DOUBLE ACTION SWITCH	

6. Refolw soldering

6.1 Reflow soldering conditions

Preheat --- Temperature on the copper foil surface should reach 180℃, 2±0.3 minutes after the PWB entered into the soldering heat zone.

Soldering heat --- Temperture on the copper foil surface should reach the peak temperature of 240℃ within 20 seconds after PWB entered into soldering heat zone.



						APPD	CHKD	DSGD	TITLE	YQCKG-P2100SW
									DOCUMENT	0122
ZONE	SYMB	DATE	APPD	CHKD	DSGD				NO.	